

Condulet® Conduit Bodies With Covers

OE Series

Cl. I, Div. 1 & 2, Groups C, D
 Cl. II, Div. 1, Groups E, F, G
 Cl. II, Div. 2, Groups F, G
 Cl. III
 NEMA 7CD, 9EFG

Explosionproof
 Dust-Ignitionproof

3F

3F

Applications:

OE series are installed in conduit systems within hazardous areas to:

- Protect conductors in threaded rigid conduit
- Act as pulling and splice fittings
- Interconnect lengths of conduit
- Change direction of conduit
- Provide access for maintenance and future system changes

Features:

OE conduit outlet bodies have:

- Taper threaded hubs for ground continuity
- Smooth integral hub bushings to protect conductor insulation when pulling
- Five different hub arrangements
- Accurately machined body with blind tapped screw holes
- Most compact design of all hazardous area outlet bodies

Certifications and Compliances:

- NEC/CEC:
 - Class I, Division 1 & 2, Groups C, D
 - Class II, Division 1, Groups E, F, G
 - Class II, Division 2, Groups F, G
 - Class III
- UL Standard: 1203
- CSA Standard: C22.2 No. 30

Standard Materials:

- Feraloy® iron alloy (1/2" and 3/4" fittings)
- Copper-free aluminum (1" fittings)

Standard Finishes:

- Electrogalvanized and aluminum acrylic paint

Options:

Description
 Corro-free™ epoxy powder coat

Suffix
S752

Size Ranges:

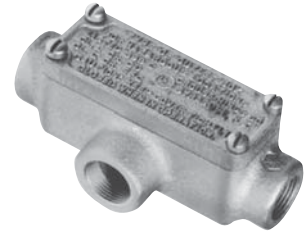
- Hub - 1/2" to 1"

OEC



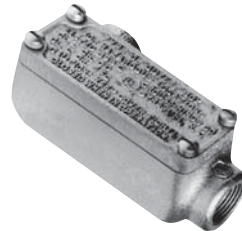
| Hub Size | Cat. # |
|----------|---------|
| 1/2 | OEC1 |
| 3/4 | OEC2 |
| 1 | OEC3 SA |

OET



| Hub Size | Cat. # |
|----------|---------|
| 1/2 | OET1 |
| 3/4 | OET2 |
| 1 | OET3 SA |

OELL



| Hub Size | Cat. # |
|----------|----------|
| 1/2 | OELL1 |
| 3/4 | OELL2 |
| 1 | OELL3 SA |

OELB



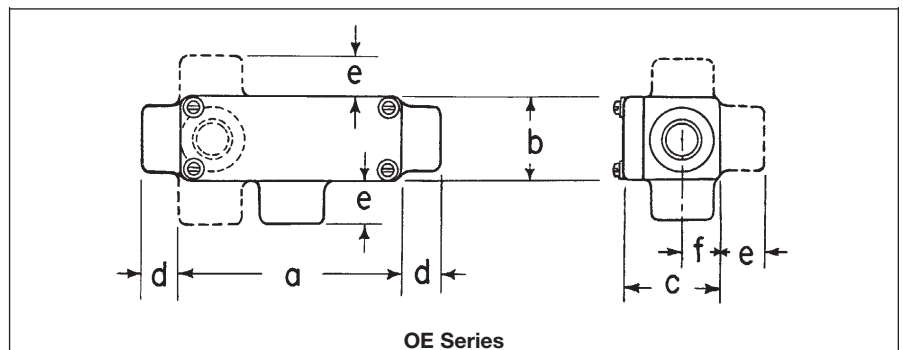
| Hub Size | Cat. # |
|----------|----------|
| 1/2 | OELB1 |
| 3/4 | OELB2 |
| 1 | OELB3 SA |

OELR



| Hub Size | Cat. # |
|----------|----------|
| 1/2 | OELR1 |
| 3/4 | OELR2 |
| 1 | OELR3 SA |

Dimensions In Inches:



| Hub Size in. | a | b | c | d | e | f |
|--------------|--------|--------|---------|--------|--------|-----|
| 1/2 | 4 7/8 | 1 9/16 | 1 13/16 | 1 1/16 | 7/8 | 5/8 |
| 3/4 | 4 5/16 | 1 7/8 | 2 1/16 | 1 1/16 | 7/8 | 3/4 |
| 1 | 5 1/16 | 2 3/8 | 2 5/16 | 3/4 | 1 1/16 | 7/8 |

Condulet® Conduit Bodies With Covers

OE Series

Cl. I, Div. 1 & 2, Groups C, D
 Cl. II, Div. 1, Groups E, F, G
 Cl. II, Div. 2, Groups F, G
 Cl. III
 NEMA 7CD, 9EFG

Explosionproof
 Dust-Ignitionproof

3F

3F

Applications:

OE series are installed in conduit systems within hazardous areas to:

- Protect conductors in threaded rigid conduit
- Act as pulling and splice fittings
- Interconnect lengths of conduit
- Change direction of conduit
- Provide access for maintenance and future system changes

Features:

OE conduit outlet bodies have:

- Taper threaded hubs for ground continuity
- Smooth integral hub bushings to protect conductor insulation when pulling
- Five different hub arrangements
- Accurately machined body with blind tapped screw holes
- Most compact design of all hazardous area outlet bodies

Certifications and Compliances:

- NEC/CEC:
 - Class I, Division 1 & 2, Groups C, D
 - Class II, Division 1, Groups E, F, G
 - Class II, Division 2, Groups F, G
 - Class III
- UL Standard: 1203
- CSA Standard: C22.2 No. 30

Standard Materials:

- Feraloy® iron alloy (1/2" and 3/4" fittings)
- Copper-free aluminum (1" fittings)

Standard Finishes:

- Electrogalvanized and aluminum acrylic paint

Options:

Description
 Corro-free™ epoxy powder coat

Suffix
S752

Size Ranges:

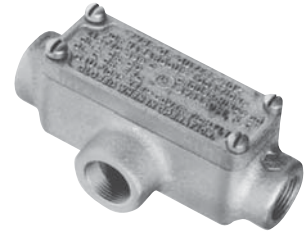
- Hub - 1/2" to 1"

OEC



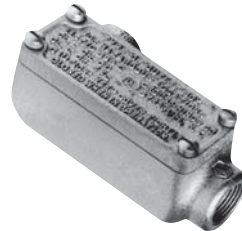
| Hub Size | Cat. # |
|----------|---------|
| 1/2 | OEC1 |
| 3/4 | OEC2 |
| 1 | OEC3 SA |

OET



| Hub Size | Cat. # |
|----------|---------|
| 1/2 | OET1 |
| 3/4 | OET2 |
| 1 | OET3 SA |

OELL



| Hub Size | Cat. # |
|----------|----------|
| 1/2 | OELL1 |
| 3/4 | OELL2 |
| 1 | OELL3 SA |

OELB



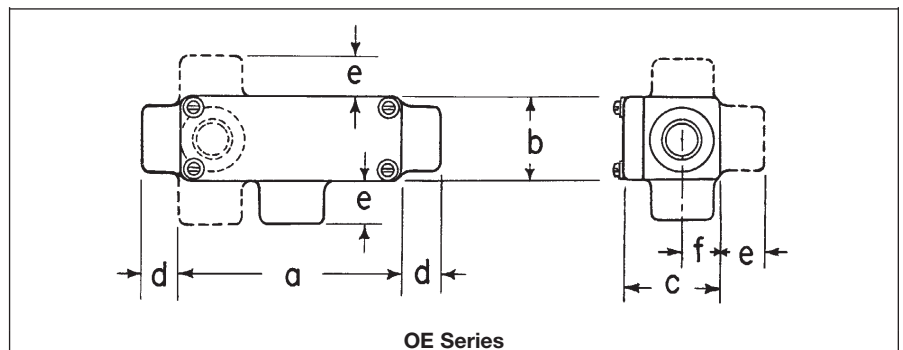
| Hub Size | Cat. # |
|----------|----------|
| 1/2 | OELB1 |
| 3/4 | OELB2 |
| 1 | OELB3 SA |

OELR



| Hub Size | Cat. # |
|----------|----------|
| 1/2 | OELR1 |
| 3/4 | OELR2 |
| 1 | OELR3 SA |

Dimensions In Inches:



| Hub Size in. | a | b | c | d | e | f |
|--------------|--------|--------|---------|--------|--------|-----|
| 1/2 | 4 7/8 | 1 9/16 | 1 13/16 | 1 1/16 | 7/8 | 5/8 |
| 3/4 | 4 5/16 | 1 7/8 | 2 1/16 | 1 1/16 | 7/8 | 3/4 |
| 1 | 5 1/16 | 2 3/8 | 2 5/16 | 3/4 | 1 1/16 | 7/8 |