

AMERICAN-MADE PRODUCT LISTING

WHEN YOU NEED TO BUY AMERICAN, **BUY BRIDGEPORT.**



AMERICAN-MADE PRODUCTS

BUILT WITH LEGENDARY QUALITY.



MADE IN



THE USA

Since 1925, Bridgeport has been casting a strong, mighty America.

When you think American, think Bridgeport. We're investing in our U.S.-based manufacturing operation in Stratford, Connecticut. We're investing in equipment, improving process automation and developing new products - all in the U.S.

And still today, over two thirds of our product volume is manufactured in the U.S. See the American-made products for your projects here or visit us online at: www.bptfittings.com

TABLE OF CONTENTS

PRODUCTS FOR RIGID CONDUIT _____ pg 2 - pg 7

PRODUCTS FOR EMT CONDUIT _____ pg 8 - pg 14

PRODUCTS FOR LIQUID TIGHT CONDUIT _____ pg 15 - pg 16

PRODUCTS FOR PORTABLE CORD _____ pg 17 - pg 18

PRODUCTS FOR FLEXIBLE METAL CONDUIT _____ pg 19 - pg 22

PRODUCTS FOR AC/MC CABLE _____ pg 23 - pg 26

PRODUCTS FOR GROUNDING _____ pg 27

PRODUCTS FOR NONMETALLIC CABLE _____ pg 28

STRAPS, CLAMPS AND HANGER PRODUCTS _____ pg 29 - pg 32

PRODUCTS FOR SERVICE ENTRANCE _____ pg 33 - pg 34

SPECIALTY PRODUCTS _____ pg 35 - pg 37



Zinc Die Cast Set Screw Connectors

Used to join unthreaded rigid or IMC conduit to a box or enclosure.

CATALOG #	TRADE SIZE
30-DC2	1/2"
31-DC2	3/4"
32-DC2	1"



Zinc Die Cast Set Screw Couplings

Used to join two unthreaded lengths of rigid or IMC conduit.

CATALOG #	TRADE SIZE
40-DC	1/2"
41-DC	3/4"
42-DC	1"



Zinc Die Cast Fitting Locknuts

Used to fasten threaded conduit to an opening in a box or enclosure.

File No. E9391: 101-DC – 106-DC

CATALOG #	TRADE SIZE
101-DC	1/2"
102-DC	3/4"
103-DC	1"
104-DC	1 1/4"
105-DC	1 1/2"
106-DC	2"
107-DC	2 1/2"
108-DC	3"
109-DC	3 1/2"
110-DC	4"



Zinc Die Cast Threaded Hubs

Used to secure threaded rigid service entrance conduit to a box or enclosure. Insulated throat rated – 105°C.

BUNA-N sealing ring completely encircles the knockout to prevent contaminants from entering the enclosure.

File No. E9391: Type 4–Water Tight

File No. LR39354

CATALOG #	TRADE SIZE
156-DC	2"
157-DC	2 1/2"
158-DC	3"
159-DC	3 1/2"
160-DC	4"



Zinc Die Cast Combination Couplings

Set screw type fitting used to join EMT to rigid or IMC.

Furnished with Tri-Drive slot/Phillips/Robertson head screws.

CATALOG #	TRADE SIZE
290-DC	1/2"
291-DC	3/4"
292-DC	1"



Bushings

Used with a locknut to protect conductors inside threaded rigid or IMC conduit when entering a box.

Rounded surface of bushing prevents damage to wire insulation.

File No. E9391: 321 – 332

File No. E11259: 321-B – 330-B

File No. LR39354

Plastic – 105°C

CATALOG #	TRADE SIZE
321	1/2"
322	3/4"
323	1"
324	1 1/4"
325	1 1/2"
326	2"

Cont. Next Page



Bushings Cont.

Plastic - 105°C Cont.

CATALOG #	TRADE SIZE
327	2 1/2"
328	3"
329	3 1/2"
330	4"
331	5"
332	6"

Plastic - 150°C

CATALOG #	TRADE SIZE
321-B	1/2"
322-B	3/4"
323-B	1"
324-B	1 1/4"
325-B	1 1/2"
326-B	2"
327-B	2 1/2"
328-B	3"
329-B	3 1/2"
330-B	4"

Rigid Nail Straps

Used to support rigid conduit and IMC to wood. Zinc plated steel.



CATALOG #	TRADE SIZE
901-NS	1/2"
902-NS	3/4"
903-NS	1"



One Hole Rigid Pipe Straps

Used to support rigid conduit and IMC to a mounting surface. Zinc plated steel.

UL File No. E161206: 904-S — 908-S

SP File No. LR39354

CATALOG #	TRADE SIZE
901-S	1/2"
902-S	3/4"
903-S	1"
904-S	1 1/4"
905-S	1 1/2"
906-S	2"
907-S	2 1/2"
908-S	3"
909-S	3 1/2"
910-S	4"



Reducing Washers

To be used in pairs to reduce the size of knockout holes. Galvanized steel.

UL File No. E11259: 1061 — 1088

SP File No. LR39354: 1061 — 1088

CATALOG #	TRADE SIZE
1061	3/4" - 1/2"
1062	1" - 1/2"
1063	1" - 3/4"
1064	1 1/4" - 1/2"
1065	1 1/4" - 3/4"
1066	1 1/4" - 1"
1067	1 1/2" - 1/2"
1068	1 1/2" - 3/4"
1069	1 1/2" - 1"
1070	1 1/2" - 1 1/4"
1071	2" - 1/2"
1072	2" - 3/4"
1073	2" - 1"
1074	2" - 1 1/4"

Cont. Next Page





Reducing Washers Cont.

CATALOG #	TRADE SIZE
1075	2" - 1 1/2"
1076	2 1/2" - 1/2"
1077	2 1/2" - 3/4"
1078	2 1/2" - 1"
1079	2 1/2" - 1 1/4"
<hr/>	
1080	2 1/2" - 1 1/2"
1081	2 1/2" - 2"
1082	3 - 1/2"
1083	3" - 3/4"
1084	3" - 1"
1085	3" - 1 1/4"
1086	3" - 1 1/2"
1087	3" - 2"
1088	3" - 2 1/2"
1089-1	3 1/2" - 1/2"
1089-2	3 1/2" - 3/4"
1089-3	3 1/2" - 1"
1089-4	3 1/2" - 1 1/4"
1089-5	3 1/2" - 1 1/2"
1089-6	3 1/2" - 2"
1089-7	3 1/2" - 2 1/2"
1089-8	3 1/2" - 3"
<hr/>	
1090-1	4" - 1/2"
1090-2	4" - 3/4"
1090-3	4" - 1"
1090-4	4" - 1 1/4"
1090-5	4" - 1 1/2"
1090-6	4" - 2"
1090-7	4" - 2 1/2"
1090-8	4" - 3"
1090-9	4" - 3 1/2"



Mighty-Seal® Raintight Reducing Sealing Washers

Used when a concentric knockout breaks out larger than expected. Maintains NEMA 3R rating on listed enclosures. Includes one coated and one uncoated washer. Coated washer installs on the exterior of the box. Sunlight resistant. Patent Pending.

 File No. E11259

CATALOG #	TRADE SIZE
1061-RT	3/4" - 1/2"
1062-RT	1" - 1/2"
1063-RT	1" - 3/4"
1065-RT	1 1/4" - 3/4"
1066-RT	1 1/4" - 1"
1071-RT	2" - 1/2"
1072-RT	2" - 3/4"
1073-RT	2" - 1"
1074-RT	2" - 1 1/4"



Conduit Nipples

When used with a locknut, conduit nipples serve as a short raceway between enclosures. Zinc die cast.

 File No. E9391

CATALOG #	TRADE SIZE
1102-DC	1/2"
1103-DC	3/4"
1104-DC	1"
1105-DC	1 1/4"
1106-DC	1 1/2"
1107-DC	2"
1108-DC	2 1/2"
1109-DC	3"
1110-DC	3 1/2"
1111-DC	4"



Conduit Nipples Cont.

Insulated Throat - 105°C

CATALOG #	TRADE SIZE
1102-DCI	1/2"
1103-DCI	3/4"
1104-DCI	1"
1105-DCI	1 1/4"
1106-DCI	1 1/2"
1107-DCI	2"
1108-DCI	2 1/2"
1109-DCI	3"
1110-DCI	3 1/2"
1111-DCI	4"



Two Hole Rigid Pipe Straps

Used to support rigid conduit and IMC to a mounting surface. Zinc plated steel.

UL US File No. E161206: 1907 – 1910

SF File No. LR39354

CATALOG #	TRADE SIZE
1901	1/2"
1902	3/4"
1903	1"
1904	1 1/4"
1905	1 1/2"
1906	2"
1907	2 1/2"
1908	3"
1909	3 1/2"
1910	4"



Offset Nipples

Used to offset the axis of a raceway 3/4" between enclosure runs.

UL US File No. E9391

CATALOG #	TRADE SIZE
1520-DC	1/2"
1521-DC	3/4"
1522-DC	1"
1523-DC	1 1/4"
1524-DC	1 1/2"
1525-DC	2"



Steel Compression Connectors

Used to join unthreaded steel rigid conduit to a box or enclosure.

UL US File No. E9391

CATALOG #	TRADE SIZE
3000-US	1/2"
3001-US	3/4"
3002-US	1"
3003-US	1 1/4"
3004-US	1 1/2"
3005-US	2"



Bushing Pennies

Used inside a bushing to prevent foreign matter from entering the conduit. Galvanized steel.

CATALOG #	TRADE SIZE
1661	1/2"
1662	3/4"
1663	1"
1664	1 1/4"
1665	1 1/2"
1666	2"
1667	2 1/2"
1668	3"
1669	3 1/2"
1670	4"
1671	5"



Steel Compression Couplings

Used to join two lengths of unthreaded steel rigid conduit.

UL US File No. E9391

CATALOG #	TRADE SIZE
3100-US	1/2"
3101-US	3/4"
3102-US	1"
3103-US	1 1/4"
3104-US	1 1/2"
3105-US	2"





Steel Set Screw Connectors

Used to join unthreaded rigid or IMC conduit to a box or enclosure.

File No. E9391

CATALOG #	TRADE SIZE
3500-US	1/2"
3501-US	3/4"
3502-US	1"
3503-US	1 1/4"
3504-US	1 1/2"
3505-US	2"



Steel Set Screw Couplings

Used to join two unthreaded lengths of rigid or IMC conduit.

File No. E9391

CATALOG #	TRADE SIZE
3600-US	1/2"
3601-US	3/4"
3602-US	1"
3603-US	1 1/4"
3604-US	1 1/2"
3605-US	2"



Steel Expansion Couplings

Low cost and easy to use. Assembles like a regular set screw coupling. Use to compensate plus or minus 2" lateral movement of conduit in dry locations. May be used with optional Bonding Jumper assembly (Cat. Nos. BJ-100, BJ-200 and BJ-400).

See Grounding Section. Patented.

File No. E24001

CATALOG #	TRADE SIZE
EC-075R	3/4"
EC-100R	1"
EC-125R	1 1/4"
EC-150R	1 1/2"
EC-200R	2"
EC-250	2 1/2"
EC-300	3"
EC-350	3 1/2"
EC-400	4"



Conduit Body Covers

Encloses conduit body, supplied with screws.

File No. E11077: SC-41 – SC-49

Aluminum

CATALOG #	TRADE SIZE
SC-41	1/2"
SC-42	3/4"
SC-43	1"
SC-44	1 1/4" - 1 1/2"
SC-46	2"
SC-47	2 1/2" - 3"
SC-49	3 1/2" - 4"

Steel

CATALOG #	TRADE SIZE
SC-61	1/2"
SC-62	3/4"
SC-63	1"
SC-64	1 1/4" - 1 1/2"
SC-66	2"
SC-67	2 1/2" - 3"
SC-69	3 1/2" - 4"



Conduit Body Gaskets

SG series provides dust-tight seal between conduit and body and cover.

SGN series provides both dust-tight and rain-tight protection.

SGN gaskets are impervious to most liquids and oils.

Cellulose

CATALOG #	TRADE SIZE
SG-61	1/2"
SG-62	3/4"
SG-63	1"
SG-64	1 1/4" - 1 1/2"
SG-66	2"

Neoprene

CATALOG #	TRADE SIZE
SGN-61	1/2"
SGN-62	3/4"
SGN-63	1"
SGN-64	1 1/4" - 1 1/2"
SGN-66	2"
SGN-67	2 1/2" - 3"
SGN-69	3 1/2" - 4"



NEW Polyolefin Coated Steel Mighty-Hold™ Universal Clamp Straps

One piece clamp back and strap secures both cable and conduit. Secures EMT, Rigid, IMC, Metallic Liquid Tight, Nonmetallic Liquid Tight, FMC and Schedule 40 and Schedule 80 PVC conduit, as well as steel and aluminum AC/MC Cable.

Cor-Shield® Polyolefin coating provides a high level of protection and a much more environmentally friendly product than other coated materials. Polyolefin provides an extremely strong shield from a vast variety of corrosive chemicals. Patent Pending.



CATALOG #	TRADE SIZE
UCSC-5075	1/2" - 3/4"
UCSC-75100	3/4" - 1"
UCSC100125	1" - 1 1/4"
UCSC125150	1 1/4" - 1 1/2"
UCSC150200	1 1/2" - 2"



Low Profile Zinc Die Cast Compression Connectors

Used to join EMT to a box or enclosure.

File No. E24001

CATALOG #	TRADE SIZE
225-DC	1/2"
226-DC	3/4"



1/2" thru 1"

Zinc Die Cast Set Screw Connectors

Used to join EMT to a box or enclosure. 2" thru 4" UL listed for both steel and aluminum EMT.

1/2" thru 2" furnished with Tri-Drive slot/Phillips/Robertson head screws.

File No. E24001 File No. LR39354

CATALOG #	TRADE SIZE
230-DC2	1/2"
231-DC2	3/4"
232-DC2	1"
233-DC2	1 1/4"
234-DC2	1 1/2"
235-DC2	2"
236-DC2	2 1/2"
237-DC2	3"
238-DC2	3 1/2"
239-DC2	4"



1 1/4" thru 2"



2 1/2" thru 4"

Insulated Throat - 105°C

CATALOG #	TRADE SIZE
230-DCI2	1/2"
231-DCI2	3/4"
232-DCI2	1"
233-DCI2	1 1/4"
234-DCI2	1 1/2"
235-DCI2	2"
236-DCI2	2 1/2"
237-DCI2	3"
238-DCI2	3 1/2"
239-DCI2	4"



1/2" thru 2"

Steel Set Screw Connectors

Used to join EMT to a box or enclosure.

File No. E24001

CATALOG #	TRADE SIZE
230-US	1/2"
231-US	3/4"
232-US	1"
233-US	1 1/4"
234-US	1 1/2"
235-US	2"
236-US	2 1/2"
237-US	3"
238-US	3 1/2"
239-US	4"



2 1/2" thru 4"

Insulated Throat - 105°C

CATALOG #	TRADE SIZE
230-USI	1/2"
231-USI	3/4"
232-USI	1"
233-USI	1 1/4"
234-USI	1 1/2"
235-USI	2"
236-USI	2 1/2"
237-USI	3"
238-USI	3 1/2"
239-USI	4"



1/2" thru 2"



1 1/4" thru 2"



2 1/2" thru 4"

Zinc Die Cast Set Screw Couplings

Used to join two lengths of EMT. 1/2" thru 2" furnished with Tri-Drive slot/Phillips/Robertson head screws.

File No. E24001 File No. LR39354

CATALOG #	TRADE SIZE
240-DC	1/2"
241-DC	3/4"
242-DC	1"
243-DC	1 1/4"
244-DC	1 1/2"
245-DC	2"
246-DC	2 1/2"
247-DC	3"
248-DC	3 1/2"
249-DC	4"

Steel Set Screw Couplings

Used to join two lengths of EMT.

File No. E24001



1/2" thru 2"



2 1/2" thru 4"

CATALOG #	TRADE SIZE
240-US	1/2"
241-US	3/4"
242-US	1"
243-US	1 1/4"
244-US	1 1/2"
245-US	2"
246-US	2 1/2"
247-US	3"
248-US	3 1/2"
249-US	4"



Zinc Die Cast Mighty-Align® EMT Slip Couplings

Used to join two lengths of EMT in tight or limited access applications. Back out center screw, slide coupling over one end of conduit and then slide other conduit into place. Fully install center screw between conduits and tighten set screws. Patents Pending.

File No. E24001

CATALOG #	TRADE SIZE
241-DCSLP	3/4"
242-DCSLP	1"
245-DCSLP	2"
247-DCSLP	3"
249-DCSLP	4"

Zinc Die Cast Compression Connectors

Used to join EMT to a box or enclosure. 2 1/2" and larger suitable for aluminum or steel EMT and rigid.

File No. E24001 File No. LR39354



CATALOG #	TRADE SIZE
250-DC2	1/2"
251-DC2	3/4"
252-DC2	1"
253-DC2	1 1/4"
254-DC	1 1/2"
255-DC	2"
256-DC	2 1/2"
257-DC"	3"
258-DC	3 1/2"
259-DC	4"

Cont. Next Page



Zinc Die Cast Compression Connectors Cont.

Insulated Throat - 105°C

CATALOG #	TRADE SIZE
250-DCI2	1/2"
251-DCI2	3/4"
252-DCI2	1"
253-DCI2	1 1/4"
254-DCI2	1 1/2"
255-DCI2	2"
256-DCI2	2 1/2"
257-DCI2	3"
258-DCI2	3 1/2"
259-DCI2	4"

Zinc Die Cast Raintight Compression Connectors Cont.

Insulated Throat - 90°C

CATALOG #	TRADE SIZE
250-RTI2US	1/2"
251-RTI2US	3/4"
252-RTI2	1"
253-RTI2	1 1/4"
254-RTI2	1 1/2"
255-RTI2	2"
256-RTI2	2 1/2"
257-RTI2	3"
258-RTI2*	3 1/2"
259-RTI2*	4"

* Consult factory for availability



Zinc Die Cast Raintight Compression Connectors

Compression style connector with internal sealing ring and knockout gasket to create a raintight seal when connecting EMT to a box or enclosure. Patented.

File No. E24001

CATALOG #	TRADE SIZE
250-RT2US	1/2"
251-RT2US	3/4"
252-RT2	1"
253-RT2	1 1/4"
254-RT2	1 1/2"
255-RT2	2"
256-RT2	2 1/2"
257-RT2	3"
258-RT2*	3 1/2"
259-RT2*	4"

* Consult factory for availability



Steel Compression Connectors

Used to join EMT to a box or enclosure.

File No. E24001

CATALOG #	TRADE SIZE
250-US	1/2"
251-US	3/4"
252-US	1"
253-US	1 1/4"
254-US	1 1/2"
255-US	2"
256-US	2 1/2"
257-US	3"
258-US	3 1/2"
259-US	4"

Insulated Throat - 105°C

CATALOG #	TRADE SIZE
250-USI	1/2"
251-USI	3/4"
252-USI	1"
253-USI	1 1/4"
254-USI	1 1/2"
255-USI	2"
256-USI	2 1/2"
257-USI	3"
258-USI	3 1/2"
259-USI	4"



Zinc Die Cast Compression Couplings

Used to join two lengths of EMT. 2 1/2" and larger are suitable for aluminum or steel EMT and rigid.

File No. E24001 File No. LR39354

CATALOG #	TRADE SIZE
260-DC	1/2"
261-DC	3/4"
262-DC	1"
263-DC	1 1/4"
264-DC	1 1/2"
265-DC	2"
266-DC	2 1/2"
267-DC	3"
268-DC	3 1/2"
269-DC	4"

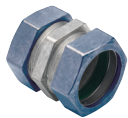


Steel Compression Couplings

Used to join two lengths of EMT.

File No. E24001

CATALOG #	TRADE SIZE
260-US	1/2"
261-US	3/4"
262-US	1"
263-US	1 1/4"
264-US	1 1/2"
265-US	2"
266-US	2 1/2"
267-US	3"
268-US	3 1/2"
269-US	4"



Zinc Die Cast Raintight Compression Couplings

Compression style coupling used to join two lengths of EMT. Internal sealing ring creates a raintight seal. Patented.

File No. E24001

CATALOG #	TRADE SIZE
260-RTUS	1/2"
261-RTUS	3/4"
262-RT	1"
263-RT	1 1/4"
264-RT	1 1/2"
265-RT	2"
266-RT	2 1/2"
267-RT	3"
268-RT*	3 1/2"
269-RT*	4"

* Consult factory for availability



Quick Install EMT Connectors

Quickly joins EMT to box or enclosure without the use of a locknut.

Simply:

- Insert fitting into the locknut
- Insert EMT into the fitting
- Tighten the set screw to simultaneously secure the EMT and the fitting into the knockout.

File No. E24001

Insulated Throat - 105°C

CATALOG #	TRADE SIZE
1701-DCI	1/2"
1702-DCI	3/4"



NEW **Mighty-Merge® 280SPMB Series Snap-In/Push-On Transition Couplings**

The patented Mighty-Merge design has a quick install snap-in end for AC/MC/HCF cables and flexible metal conduit and a labor saving push-on end for 3/4" EMT.

Ideal for transitioning to fixtures and equipment above ceilings and for continuing the speed of armored cables down the wall to emergency lights, devices and panels. Great for use with larger diameter MC PCS Luminary Cable.

File No. E9391

Insulated Throat - 105°C

CATALOG #	TRADE SIZE
280SPMB	1/2"
281SPMB	3/4"



One Hole EMT Straps

To support EMT to a mounting surface. Zinc plated steel.

File No. E161206: 924-S & 925-S

File No. LR39354

CATALOG #	TRADE SIZE
920-S	1/2"
921-S	3/4"
922-S	1"
923-S	1 1/4"
924-S	1 1/2"
925-S	2"



Zinc Die Cast Combination Couplings

Set screw type fitting used to join EMT to rigid or IMC. Furnished with Tri-Drive slot/Phillips/Robertson head screws.

CATALOG #	TRADE SIZE
290-DC	1/2"
291-DC	3/4"
292-DC	1"



Two Hole EMT Pipe Straps

To support EMT to a mounting surface. Zinc plated steel.

File No. LR39354

CATALOG #	TRADE SIZE
1920	1/2"
1921	3/4"
1922	1"
1923	1 1/4"
1924	1 1/2"
1925	2"



Zinc Die Cast Combination Couplings

Used to join EMT to flexible metal conduit. Screw-in end for flex. Compression end for EMT.

File No. E9391
(581-DC also UL listed for use with XRWFMC)

CATALOG #	TRADE SIZE
581-DC	1/2"
582-DC	3/4"
583-DC	1"



Steel Expansion Couplings

Low cost and easy to use. Assembles like a regular set screw coupling. Use to compensate for plus or minus 2" lateral movement of conduit in dry locations.

May be used with optional Bonding Jumper assembly (Cat. Nos. BJ-100, BJ-200 and BJ-400). (See Grounding Section) Patented.

File No. E24001

CATALOG #	TRADE SIZE
EC-075	3/4"
EC-100	1"
EC-125	1 1/4"
EC-150	1 1/2"
EC-200	2"
EC-250	2 1/2"
EC-300	3"
EC-350	3 1/2"
EC-400	4"



EMT Nail Straps


To support EMT to a mounting surface. Zinc plated steel.

CATALOG #	TRADE SIZE
920-NS	1/2"
921-NS	3/4"
922-NS	1"



Conduit Body Covers

Encloses conduit body; supplied with screws. Aluminum.

 File No. E11077

CATALOG #	TRADE SIZE
SC-41	1/2"
SC-42	3/4"
SC-43	1"
SC-44	1 1/4" - 1 1/2"
SC-46	2"
SC-47	2 1/2" - 3"
SC-49	3 1/2" - 4"

Conduit Body Gaskets



SG series provides dust-tight seal between conduit and body and cover.

SGN series provides both dust-tight and rain-tight protection.

SGN gaskets are impervious to most liquids and oils.

Cellulose

CATALOG #	TRADE SIZE
SG-61	1/2"
SG-62	3/4"
SG-63	1"
SG-64	1 1/4" - 1 1/2"
SG-66	2"

Neoprene

CATALOG #	TRADE SIZE
SGN-61	1/2"
SGN-62	3/4"
SGN-63	1"
SGN-64	1 1/4" - 1 1/2"
SGN-66	2"
SGN-67	2 1/2" - 3"
SGN-69	3 1/2" - 4"



Polyolefin Coated Steel Mighty-Hold™ Universal Clamp Straps

One piece clamp back and strap secures both cable and conduit. Secures EMT, Rigid, IMC, Metallic Liquid Tight, Nonmetallic Liquid Tight, FMC and Schedule 40 and Schedule 80 PVC conduit, as well as steel and aluminum AC/MC Cable.

Cor-Shield® Polyolefin coating provides a high level of protection and a much more environmentally friendly product than other coated materials. Polyolefin provides an extremely strong shield from a vast variety of corrosive chemicals. Patent Pending.



CATALOG #	TRADE SIZE
UCSC-5075	1/2" - 3/4"
UCSC-75100	3/4" - 1"
UCSC100125	1" - 1 1/4"
UCSC125150	1 1/4" - 1 1/2"
UCSC150200	1 1/2" - 2"



Mighty-Seal® and Mighty-Bite™ Connectors and Couplings

Connecting EMT conduit in wet or dry locations has never been this fast and simple. Mighty-Seal® and Mighty-Bite™ connectors and couplings are part of the exclusive Mighty-B line of high-quality, high-performance products focused on getting the job done fast, done right.

Legendary Bridgeport quality, innovation and unparalleled service are built in to every Mighty-B fitting we ship. All Mighty-B fittings exceed the stringent design requirements of UL 514B and the National Electrical Code. Just push the fitting onto the conduit.

Features:

- Push-on install
- Removable and reusable
- Raintight and dry location models
- Concrete-tight
- Constructed of the highest quality zinc
- Corrosion resistant
- Precision cast threads
- Reversible zinc serrated locknut
- cULus Listed
- Approximately 75% quicker to install than conventional fittings
- Patented



Mighty-Bite™ Dry-Location Connectors

File No. E24001

CATALOG #	TRADE SIZE
250-MB	1/2"
251-MB	3/4"



Mighty-Seal® Raintight Connectors (Insulated)

File No. E24001

CATALOG #	TRADE SIZE
250-MSRTI	1/2"
251-MSRTI	3/4"



Mighty-Bite™ Dry-Location Connectors (Insulated)

File No. E24001

CATALOG #	TRADE SIZE
250-MBI	1/2"
251-MBI	3/4"



Mighty-Bite™ Dry-Location Couplings

File No. E24001

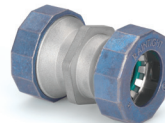
CATALOG #	TRADE SIZE
260-MB	1/2"
261-MB	3/4"



Mighty-Seal® Raintight Connectors

File No. E24001

CATALOG #	TRADE SIZE
250-MSRT	1/2"
251-MSRT	3/4"



Mighty-Seal® Raintight Couplings

File No. E24001

CATALOG #	TRADE SIZE
260-MSRT	1/2"
261-MSRT	3/4"



Straight Zinc Die Cast Liquid Tight Connectors

For use with metallic and nonmetallic "Type B" liquid tight conduit.

File No. E9391 File No. LR39354

CATALOG #	TRADE SIZE
434-LT2	1 1/2"
435-LT2	2"
436-LT2	2 1/2"
437-LT2	3"
438-LT2	3 1/2"
439-LT2	4"

Insulated Throat - 105°C

CATALOG #	TRADE SIZE
434-LTI2	1 1/2"
435-LTI2	2"
436-LTI2	2 1/2"
437-LTI2	3"
438-LTI2	3 1/2"
439-LTI2	4"

Straight Steel Liquid Tight Connectors

For use with metallic liquid tight conduit. Zinc Electroplated.

Suitable for use in:
Class 1 Division 2
Class II Divisions 1 & 2
Class III Divisions 1 & 2 per NEC 501.30 (B)

File No. E9391

CATALOG #	TRADE SIZE
429-SLTUS	3/8"
430-SLTUS	1/2"
431-SLTUS	3/4"
432-SLTUS	1"
433-SLTUS	1 1/4"
434-SLTUS	1 1/2"
435-SLTUS	2"
436-SLTUS	2 1/2"
437-SLTUS	3"
438-SLTUS	3 1/2"
439-SLTUS	4"



Straight Steel Liquid Tight Connectors Cont.

Insulated Throat - 105°C

CATALOG #	TRADE SIZE
429-SLTIUS	3/8"
430-SLTIUS	1/2"
431-SLTIUS	3/4"
432-SLTIUS	1"
433-SLTIUS	1 1/4"
434-SLTIUS	1 1/2"
435-SLTIUS	2"
436-SLTIUS	2 1/2"
437-SLTIUS	3"
438-SLTIUS	3 1/2"
439-SLTIUS	4"

45° Malleable Iron Liquid Tight Connectors

For use with metallic liquid tight conduit. Zinc Electroplated.

Suitable for use in:
Class 1 Division 2
Class II Divisions 1 & 2
Class III Divisions 1 & 2 per NEC 501.30 (B)

File No. E9391



CATALOG #	TRADE SIZE
449-SLTUS	3/8"
450-SLTUS	1/2"
451-SLTUS	3/4"
452-SLTUS	1"
453-SLTUS	1 1/4"
454-SLTUS	1 1/2"
455-SLTUS	2"
456-SLTUS	2 1/2"
457-SLTUS	3"
458-SLTUS	3 1/2"
459-SLTUS	4"

Cont. Next Page



45° Malleable Iron Liquid Tight Connectors Cont.

Insulated Throat - 105°C

CATALOG #	TRADE SIZE
449-SLTIUS	3/8"
450-SLTIUS	1/2"
451-SLTIUS	3/4"
452-SLTIUS	1"
453-SLTIUS	1 1/4"
454-SLTIUS	1 1/2"
455-SLTIUS	2"
456-SLTIUS	2 1/2"
457-SLTIUS	3"
458-SLTIUS	3 1/2"
459-SLTIUS	4"



90° Malleable Iron Liquid Tight Connectors

For use with metallic liquid tight conduit. Zinc Electroplated.

Suitable for use in:
 Class I Division 2
 Class II Divisions 1 & 2
 Class III Divisions 1 & 2 per NEC 501.30 (B)

File No. E9391

CATALOG #	TRADE SIZE
469-SLTUS	3/8"
470-SLTUS	1/2"
471-SLTUS	3/4"
472-SLTUS	1"
473-SLTUS	1 1/4"
474-SLTUS	1 1/2"
475-SLTUS	2"
476-SLTUS	2 1/2"
477-SLTUS	3"
478-SLTUS	3 1/2"
479-SLTUS	4"



Insulated Throat - 105°C

CATALOG #	TRADE SIZE
469-SLTIUS	3/8"
470-SLTIUS	1/2"
471-SLTIUS	3/4"
472-SLTIUS	1"
473-SLTIUS	1 1/4"
474-SLTIUS	1 1/2"
475-SLTIUS	2"
476-SLTIUS	2 1/2"
477-SLTIUS	3"
478-SLTIUS	3 1/2"
479-SLTIUS	4"

Zinc Die Cast Combination Couplings

Use to join either metallic or nonmetallic (Type "B") liquid tight to EMT. Concrete-tight. UL Listed "Raintight."

File No. E24001

CATALOG #	TRADE SIZE (EMT & LT)
4362-DC	1"
4363-DC	1 1/4"
4364-DC	1 1/2"
4365-DC	2"



Polyolefin Coated Steel Mighty-Hold™ Universal Clamp Straps

One piece clamp back and strap secures both cable and conduit. Secures EMT, Rigid, IMC, Metallic Liquid Tight, Nonmetallic Liquid Tight, FMC and Schedule 40 and Schedule 80 PVC conduit, as well as steel and aluminum AC/MC Cable.

Cor-Shield® Polyolefin coating provides a high level of protection and a much more environmentally friendly product than other coated materials. Polyolefin provides an extremely strong shield from a vast variety of corrosive chemicals. Patent Pending.



CATALOG #	TRADE SIZE
UCSC-5075	1/2" - 3/4"
UCSC-75100	3/4" - 1"
UCSC100125	1" - 1 1/4"
UCSC125150	1 1/4" - 1 1/2"
UCSC150200	1 1/2" - 2"



PVC "Snap-In" Type Connectors

For connecting portable cord to a box or enclosure. Locknut not required.

File No. E11698 File No. LR74878

CATALOG #	TRADE SIZE	CORD RANGE
620-NM	1/2"	19/64 - 19/32 *
621-NM	3/4"	1/2 - 27/32

* Or two cords 19/64



Two Screw, Strap Type Connector

For connecting SJO cord to a box or enclosure. Also listed for NM-B cable.

File No. E11698

CATALOG #	TRADE SIZE	CORD RANGE
650-DC2	1/2"	18/3 - 12/3



Zinc Die Cast Straight Cord Grip Connectors

For use with any flexible cord. Provides liquid tight, watertight protection. Tapered (NPT) threads.

Furnished with polyethylene knockout gasket and locknut.

File No. E11259 File No. LR39354

CATALOG #	TRADE SIZE	CORD RANGE
770-22	1/2"	.125" - .187"
770-32	1/2"	.187" - .250"
770-42	1/2"	.250" - .375"
770-52	1/2"	.375" - .500"
770-62	1/2"	.500" - .625"
770-72	1/2"	.625" - .750"
771-32	3/4"	.250" - .375"
771-42	3/4"	.375" - .500"
771-52	3/4"	.500" - .625"
771-62	3/4"	.625" - .750"
772-32	1"	.500" - .625"
772-42	1"	.625" - .750"
772-52	1"	.750" - .875"
772-62	1"	.875" - 1.000"



Straight Cord Grip Connectors

Designed to meet the requirements of rugged service on all types of equipment. -105°C color coded grommets clearly indicate the minimum-maximum cable diameter range.

File No. E11259

Steel

CATALOG #	TRADE SIZE	CORD RANGE
CG770-250	1/2"	.150" - .250"
CG770-350	1/2"	.250" - .350"
CG770-450	1/2"	.350" - .450"
CG770-560	1/2"	.450" - .550"
CG770-650	1/2"	.550" - .650"

CG771-250	3/4"	.150" - .250"
CG771-350	3/4"	.250" - .350"
CG771-450	3/4"	.350" - .450"
CG771-560	3/4"	.450" - .550"
CG771-650	3/4"	.550" - .650"
CG771-750	3/4"	.650" - .750"
CG771-850	3/4"	.750" - .850"

CG772-560	1"	.450" - .550"
CG772-650	1"	.550" - .650"
CG772-750	1"	.650" - .750"
CG772-850	1"	.750" - .850"
CG772-950	1"	.850" - .950"
CG772-1050	1"	.950" - 1.050"

CG773-850	1 1/4"	.750" - .850"
CG773-950	1 1/4"	.850" - .950"
CG773-1050	1 1/4"	.950" - 1.050"
CG773-1150	1 1/4"	1.050" - 1.150"
CG773-1250	1 1/4"	1.150" - 1.250"
CG773-1375	1 1/4"	1.250" - 1.375"

CG774-1050	1 1/2"	.950" - 1.050"
CG774-1150	1 1/2"	1.050" - 1.150"
CG774-1250	1 1/2"	1.150" - 1.250"
CG774-1375	1 1/2"	1.250" - 1.375"

Cont. Next Page





**Straight Cord Grip Connectors
Cont.**

Aluminum

CATALOG #	TRADE SIZE	CORD RANGE
CGA770250	1/2"	.150" - .250"
CGA770350	1/2"	.250" - .350"
CGA770450	1/2"	.350" - .450"
CGA770560	1/2"	.450" - .550"
CGA770650	1/2"	.550" - .650"
CGA771250	3/4"	.150" - .250"
CGA771350	3/4"	.250" - .350"
CGA771450	3/4"	.350" - .450"
CGA771560	3/4"	.450" - .550"
CGA771650	3/4"	.550" - .650"
CGA771750	3/4"	.650" - .750"
CGA771850	3/4"	.750" - .850"
CGA772560	1"	.450" - .550"
CGA772650	1"	.550" - .650"
CGA772750	1"	.650" - .750"
CGA772850	1"	.750" - .850"
CGA772950	1"	.850" - .950"
CGA7721050	1"	.950" - .1050"



403-DC2

Zinc Die Cast Set Squeeze Connectors

To connect flexible metal conduit to a box or enclosure.

File No. E9391

File No. LR39354: 408-DC2

CATALOG #	TRADE SIZE
403-DC2	3/8"
407-DC2	1/2"
408-DC2	3/4"z
410-DC2	1"
412-DC2	1 1/4"
414-DC2	1 1/2"
416-DC2	2"
417-DC2	2 1/2"
418-DC2	3"
419-DC2	3 1/2"
420-DC2	4"



1/2" thru 2"



2 1/2" thru 4"

Insulated Throat - 105°C

CATALOG #	TRADE SIZE
407-DCI2	1/2"
408-DCI2	3/4"
410-DCI2	1"
412-DCI2	1 1/4"
414-DCI2	1 1/2"
416-DCI2	2"

Zinc Die Cast Squeeze Connector with Grounding Lug

To connect flexible metal conduit and AC cable to a box or enclosure. Copper grounding lug range #14 to #6 AWG. For FMC use #1003 Anti-Short Brushing.

File No. E20412

CATALOG #	TRADE SIZE
407-DC2G	1/2"



Zinc Die Cast Set Screw Connectors

To connect flexible metal conduit to a box or enclosure.

File No. E9391

File No. LR39354

CATALOG #	TRADE SIZE
507-DC2	1/2"
508-DC2	3/4"

Insulated Throat - 105°C

CATALOG #	TRADE SIZE
507-DCI2	1/2"
508-DCI2	3/4"

Zinc Die Cast Screw-In Connectors

To connect flexible metal conduit to a box or enclosure.

File No. E9391 (520-DC2 and 520-DCI2 also UL listed for use with XRWFCM)

File No. LR39354: 519-DC2 – 521-DC2; 519-DCI2 – 521-DCI2

CATALOG #	TRADE SIZE
519-DC2	3/8"
520-DC2	1/2"
521-DC2	3/4"
522-DC2	1"
523-DC2	1 1/4"
524-DC2	1 1/2"
525-DC2	2"

Insulated Throat - 105°C

CATALOG #	TRADE SIZE
520-DCI2	1/2"
521-DCI2	3/4"
522-DCI2	1"
523-DCI2	1 1/4"
524-DCI2	1 1/2"
525-DCI2	2"





Zinc Die Cast Screw-In Couplings

Used to join two lengths of flexible metal conduit.

File No. E9391 (530-DC also UL listed for use with XRWFMC)

CATALOG #	TRADE SIZE
530-DC	1/2"
531-DC	3/4"
532-DC	1"
533-DC	1 1/4"
534-DC	1 1/2"
535-DC	2"



Zinc Die Cast Combination Couplings

Used to join EMT to flexible metal conduit. Screw-in end for flex. Compression end for EMT.

File No. E9391 (581-DC also UL listed for use with XRWFMC)

CATALOG #	TRADE SIZE
581-DC	1/2"
582-DC	3/4"
583-DC	1"



590-DC2

Zinc Die Cast Snap Type Connectors

For connecting 1 1/2 to 1 3/8 aluminum or steel AC/MC cable or 3/8" flexible metal conduit to a box or enclosure. Patent Pending.

File No. E20534



590-DC12

CATALOG #	TRADE SIZE
590-DC2	3/8"

Insulated Throat - 105°C

CATALOG #	TRADE SIZE
590-DC12	3/8"



600-DC2



602-DC2

Zinc Die Cast Duplex Connectors

Set screw type connectors used to connect flexible metal steel conduit to a box or enclosure.

CATALOG #	TRADE SIZE
600-DC2	3/8"
602-DC2	3/8"



601-DC2



630-DC2

Zinc Die Cast Duplex Connectors

Strap type connectors used to connect flexible metal conduit to a box or enclosure.

File No. E20534

File No. LR39354: 601-DC2

CATALOG #	TRADE SIZE
601-DC2	3/8"
630-DC2	3/8"



Zinc Die Cast Two Screw Strap Type Connectors

Used to connect flexible metal conduit to a box or enclosure.

File No. E20534

CATALOG #	TRADE SIZE
653-DC2	1/2"



Zinc Die Cast 90° Connectors

90° connectors with cover used for connecting flexible metal conduit to a box or enclosure.

804-DC2 — 808-DC2 and 804-DCI2 — 808-DCI2 also suitable for use with armored cable.

File No. E9391:
801-DC2, 809-DC2, 810-DC2, 801-DCI2, 809-DCI2 and 810-DCI2

File No. E20534:
804-DC2, 806-DC2, 807-DC2, 808-DC2, 804-DCI2, 806-DCI2, 807-DCI2 and 808-DCI2

File No. LR39354

CATALOG #	TRADE SIZE
801-DC2	3/8"
804-DC2	1/2"
806-DC2	3/4"
807-DC2	1"
808-DC2	1 1/4"
809-DC2	1 1/2"
810-DC2	2"

Insulated Throat - 105°C

CATALOG #	TRADE SIZE
801-DCI2	3/8"
804-DCI2	1/2"
806-DCI2	3/4"
807-DCI2	1"
808-DCI2	1 1/4"
809-DCI2	1 1/2"
810-DCI2	2"



Whipper-Snap® Two Screw Strap Type Connector

Used to connect 3/8" steel or aluminum flexible metal conduit to a box or enclosure. Rectangular opening. Zinc die cast. Patented.

File No. E9391

CATALOG #	TRADE SIZE
840SP	3/8"



Whipper-Snap® Duplex Connector

The 846SP is a strap type fitting with external spring steel locking tabs that allow the connector to simply snap into the electrical box. Use with 1/2 to 10/4 armored or metal clad cable or 3/8" flexible metal conduit. Zinc die cast. Patented.

File No. E20534

CATALOG #	TRADE SIZE
846SP	3/8"



Whipper-Snap® 90° Connector Double-Screw Design

Simply snap connector into electrical box. External spring steel locking tabs secures connector to box. Zinc die cast. Patented.

File No. E25034

CATALOG #	TRADE SIZE
850SP	3/8"

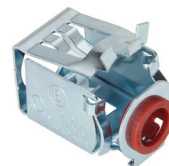


One Hole FMC and AC/MC Straps

Snap-on strap used to support flexible metal conduit, armored cable or metal clad cable.

File No. E161206

CATALOG #	FMC TRADE SIZE	CABLE SIZE	AC/MC RANGE	
			MIN	MAX
900-F	3/8"	12/4, 10/2, 10/3	.560	.610

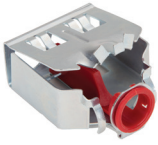


Steel E-Z Lock™ Quick Install Connectors

Used to connect 1/2 to 10/2 AC/MC/MCI-A/HCF/HCFMCI-A and 3/8" FMC cable to box or enclosure.

No tools required. Simply snap the connector onto the cable, squeeze the lever and set into the knockout. Patent Pending.

CATALOG #	TRADE SIZE
AMC-50QI	3/8"



NEW Steel E-Z Lock™ Quick Install Duplex Connectors

Used to connect duplex 14/2 to 10/2 AC/MC/MCI-A/HCF/HCFMCI-A and 3/8" FMC cable to box or enclosure. No tools required. Simply snap the connector onto the cable, squeeze the lever and set into the knockout. Patented.

File No. E25034

CATALOG #	TRADE SIZE
AMC-52QI	3/8"



QUICK INSTALL

Whipper-Snap® "U" Shaped Strap Connectors

For connecting 14/2 to 10/3 AC/MC or 3/8" steel or aluminum reduced wall flexible metal conduit to a box or enclosure. Zinc die cast. Patented.

File No. E25034

CATALOG #	TRADE SIZE
SG38MCI-A	3/8"



Whipper-Snap® Screw-in Connectors

For connecting flexible metal conduit to a box or enclosure. Screw connector into conduit and snap into electrical box. Patented.

File No. E25034

CATALOG #	TRADE SIZE
GF38SP	3/8"
GF50SP	1/2"



QUICK INSTALL

Whipper-Snap® "U" Shaped Strap Duplex Connectors

For connecting 14/2 to 10/3 AC/MC cable or 3/8" flexible metal conduit to a box or enclosure. Zinc die cast. Insulated throat. Patented.

File No. E25034

CATALOG #	TRADE SIZE
SG3838ASP	3/8"



QUICK INSTALL

SG38ASP



QUICK INSTALL

SG38SP

Whipper-Snap® "U" Shaped Strap Connectors

For connecting 14/4 to 10/3 AC/MC or 3/8" flexible metal conduit to a box or enclosure. Zinc die cast. Patented.

File No. E25034

CATALOG	TRADE SIZE
SG38SP	3/8"

Insulated Throat - 105°C

CATALOG	TRADE SIZE
SG38ASP	3/8"



Mighty-Hold™ Universal Straps

Steel or aluminum AC/MC/MCI-A cable .43" - .61" O.D

For steel or aluminum 3/8" FMC. .210 hole size. Supports multiple sizes. Patented.

File No. E161206

CATALOG #	TRADE SIZE
US-4461	3/8"



Zinc Die Cast Squeeze Connectors with Grounding Lug

To connect flexible metal conduit and AC cable to a box or enclosure. AC cable range .860" to .920".

Copper grounding lug range #14 to #6 AWG. For FMC use #1003 Anti-Short Bushing.

File No. E20412

CATALOG #	TRADE SIZE
407-DC2G	1/2"



Zinc Die Cast Set Screw Connectors

Used to connect AC/MC cable to box or enclosure.

File No. E20534

CATALOG #	TRADE SIZE
501-DC2	3/8"



Zinc Die Cast Single Screw, Strap Type Connectors

Used to connect armored or metal clad cable to a box or enclosure. Tri-Drive screws.

File No. E20534 File No. LR39354

CATALOG #	TRADE SIZE	RANGE	
		MIN	MAX
560-DC2	3/8"	.44	.61



Insulated Throat - 105°C

CATALOG #	TRADE SIZE	RANGE	
		MIN	MAX
560-DCI2	3/8"	.44	.61

560-DCI2



Whipper-Snap® Single Screw Strap Type Connector for MCI-A Cable

For connecting 14/2 (.38" Ø min) to 10/3 (.61" Ø max) steel or aluminum AC/MC cable or 3/8" steel or aluminum flexible metal conduit to a box or enclosure.

File No. E25034

CATALOG #	TRADE SIZE
560-MCIA2	3/8"



570-DC2

Zinc Die Cast Low Profile "U" Shaped Strap Connectors

Used to connect 14/2 to 10/3 armored or metal clad cable to a box or enclosure. Tri-Drive screws.

File No. E20534

CATALOG #	TRADE SIZE	RANGE	
		MIN	MAX
570-DC2	3/8"	.38	.61



570-DCI2

Insulated Throat - 105°C

CATALOG #	TRADE SIZE	RANGE	
		MIN	MAX
570-DCI2	3/8"	.38	.61



Zinc Die Cast HCF Cable Color Coded Connectors

Used to connect steel or aluminum 14/2 to 10/3 Health Care Facilities armored cable. Green color for all green cable. Patented.

File No. E25034

CATALOG #	TRADE SIZE	RANGE	
		MIN	MAX
570-GI	3/8"	.38	.61



Zinc Die Cast Fire Alarm Cable Color Coded Connectors

Suitable for use with 18/2 (.38" Ø min) to 12/4 (.61" Ø max) solid TFN or THHN, or 18/2 (.41" Ø min) to 12/4 (.61" Ø max) solid twisted pair red-colored fire alarm MC cable. Patented.

File No. E25034

CATALOG #	TRADE SIZE	RANGE	
		MIN	MAX
570-RI	3/8"	.38	.61



590-DC2

Zinc Die Cast Snap Type Connectors

For connecting 14/2 to 10/3 aluminum or steel AC/MC cable or 3/8" flexible metal conduit to a box or enclosure.

File No. E20534

CATALOG #	TRADE SIZE	RANGE	
		MIN	MAX
590-DC2	3/8"	.43	.61



590-DC12

Insulated Throat - 105°C

CATALOG #	TRADE SIZE	RANGE	
		MIN	MAX
590-DC12	3/8"	.38	.61

Polyolefin Coated Mighty-Seal® PVC Jacketed MC and TECK Cable Connectors

For connecting PVC Jacketed MC Cable or Teck cable to box or enclosure. Cor-Shield® Polyolefin coating provides a high level of protection and a much more environmentally friendly product than other coated materials. Polyolefin provides an extremely strong shield from a vast variety of corrosive chemicals. Listed for direct burial. Concrete Tight.



595-DC2C



895-DC2C

CATALOG #	TECK RANGE	RANGE	
		MIN	MAX
595-DC2C	14/2 - 12/2	12/2 - 10/3	
596-DC2C	14/3 - 10/3	10/4 - 8/3	
895-DC2C*	14/2 - 12/2	12/2 - 10/3	

* 90 Degree Version

Zinc Die Cast Duplex Connectors

For connecting 14/2 to 10/3 armored or metal clad cable to a box or enclosure.

File No. E20534 File No. LR39354

CATALOG #	TRADE SIZE	RANGE	
		MIN	MAX
601-DC2	3/8"	.375	.625

Zinc Die Cast Two Screw Strap Type Connectors

Used to connect aluminum or steel AC cable or flexible metal steel conduit to a box or enclosure.

File No. E20534

CATALOG #	TRADE SIZE	RANGE	
		MIN	MAX
653-DC2	1/2"	.675	.90

Zinc Die Cast Two Screw Strap Type Connectors

Used to connect metal clad cable to a box or enclosure.

File No. E20534: 682-DC

File No. E202876: 683-DC2 – 686-DC2, 683-DC12 – 686-DC12, 683-DCX2 – 689-DCX2

File No. E191676: 687-DC2 – 689-DC2



683-DC2

Round Opening

CATALOG #	TRADE SIZE	RANGE	
		MIN	MAX
682-DC2	1/2"	0.575	0.875
683-DC2	1"	0.875	1.040
684-DC2	1 1/4"	1.100	1.250
685-DC2	1 1/2"	1.250	1.500
686-DC2	2"	1.750	2.000
687-DC2	2 1/2"	2.000	2.500
688-DC2	3"	2.375	3.000
689-DC2	3 1/2"	2.750	3.500



683-DC12

Round Opening Insulated Throat - 105°C

CATALOG #	TRADE SIZE	RANGE	
		MIN	MAX
683-DC12	1"	0.750	1.040
684-DC12	1 1/4"	1.100	1.250
685-DC12	1 1/2"	1.250	1.500
686-DC12	2"	1.750	2.000
687-DC12	2 1/2"	2.000	2.500
688-DC12	3"	2.375	3.000
689-DC12	3 1/2"	2.750	3.500



683-DCX2

Rectangular Opening

CATALOG #	TRADE SIZE	RANGE	
		MIN	MAX
683-DCX2	1"	0.875	1.040
684-DCX2	1 1/4"	1.100	1.250
685-DCX2	1 1/2"	1.250	1.500
686-DCX2	2"	1.500	1.850
687-DCX2	2 1/2"	2.000	2.500
688-DCX2	3"	2.375	3.000
689-DCX2	3 1/2"	2.750	3.500



Zinc Die Cast 90° Connectors

90° connectors with cover used for connecting armored or metal cable to a box or enclosure.

- File No. E9391: 801-DC2, 801-DC12
- File No. E20534: 804-DC2, 806-DC2, 807-DC2, 808-DC2, 804-DC12, 806-DC12, 807-DC12 & 808-DC12
- File No. LR39354

CATALOG #	TRADE SIZE	METAL CLAD CABLE RANGE	
		MIN	MAX
801-DC2	3/8"	0.450	0.625
804-DC2	1/2"	0.750	0.875
806-DC2	3/4"	0.875	1.000
807-DC2	1"	1.187	1.312
808-DC2	1 1/4"	1.500	1.625

Insulated Throat - 105°C

CATALOG #	TRADE SIZE	METAL CLAD CABLE RANGE	
		MIN	MAX
801-DC12	3/8"	0.450	0.625
804-DC12	1/2"	0.750	0.875
806-DC12	3/4"	0.875	1.000
807-DC12	1"	1.187	1.312
808-DC12	1 1/4"	1.500	1.625



Whipper-Snap® Two Screw Strap Type Connector

For connecting 14/2 (.44" Ø min) to 10/3 (.61" Ø max) steel or aluminum AC/MC cable. Zinc die cast. Patented.

- File No. E20534

CATALOG #	TRADE SIZE
840SP	3/8"



Whipper-Snap® Duplex Connectors

The 846SP is a strap type fitting with external spring steel locking tabs that allow the connector to simply snap into the electrical box. Use the 846SP with 14/2 (.38" Ø min) to 10/4 (.625" Ø max). Zinc die cast. Patented.

- File No. E20534

CATALOG #	TRADE SIZE
846SP	3/8"



Whipper-Snap® 90° Connectors Double-Screw Design

Used for connecting 12/2 (.55" Ø min) to 10/3 (.61" Ø max) AC/MC cable to a box or enclosure. Zinc die cast. Patented.

- File No. E25034

CATALOG #	TRADE SIZE
850SP	3/8"



One Hole FMC and AC/MC Straps

Snap-on strap used to support metal clad cable. Steel.

- File No. E161206

CATALOG #	FMC TRADE SIZE	CABLE SIZE	AC/MC RANGE	
			MIN	MAX
890-MC	—	14/2, 12/2	0.475	0.525
891-MC	—	14/3, 12/3	0.540	0.590
900-F	3/8"	12/4, 10/2, 10/3	.560	.610

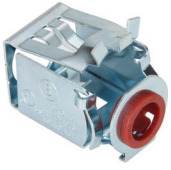


AC/MC Cable Brackets

Positions AC or MC cables. Galvanized steel construction. Convenient slot and hole for attaching to stud with nails or screws.

- File No. E161206

CATALOG #	AC/MC RANGE CABLE SIZE
895-MC	Max of (4) 14/2, 14/3, 14/4, 12/2 or 12/3

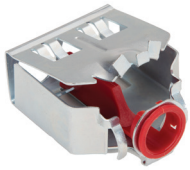


NEW Steel E-Z Lock™ Quick Install Connectors

Used to connect 14/2 to 10/2 AC/MC/MCI-A/HCF/HCFMCI-A and 3/8" FMC cable to box or enclosure. No tools required. Simply snap the connector onto the cable, squeeze the lever and set into the knockout. Patent Pending.



CATALOG #	TRADE SIZE
AMC-50QI	3/8"



NEW Steel E-Z Lock™ Quick Install Duplex Connectors

Used to connect duplex 14/2 to 10/2 AC/MC/MCI-A/HCF/HCFMCI-A and 3/8" FMC cable to box or enclosure. No tools required. Simply snap the connector onto the cable, squeeze the lever and set into the knockout. Patented.



CATALOG #	TRADE SIZE
AMC-50QI	3/8"



SG38ASP

SG38SP

Whipper-Snap® "U" Shaped Strap Connectors

For connecting 14/4 (.43" Ø min) to 10/3 (.61" Ø max) AC/MC cable or 3/8" flexible metal conduit to a box or enclosure. Zinc die cast. Patented.

File No. E25034

Insulated Throat - 105°C

CATALOG #	TRADE SIZE
SG38ASP	3/8"
SG38SP	3/8"

Whipper-Snap® "U" Shaped Strap Connector for MCI-A Cable

For connecting 14/2 (.38" Ø min) to 10/3 (.56" Ø max) steel or aluminum reduced wall flexible metal conduit to a box or enclosure. Zinc die cast. Patented.

File No. E25034

CATALOG #	TRADE SIZE
SG38MCIA	3/8"



Whipper-Snap® "U" Shaped Strap Duplex Connectors

For connecting 14/2 (.42" Ø min) to 10/3 (.61" Ø max) AC/MC cable or 3/8" flexible metal conduit to a box or enclosure. Zinc die cast. Patented.

File No. E25034

CATALOG #	TRADE SIZE
SG3838ASP	3/8"



Mighty-Hold™ Universal Straps

The US-4461 is for steel or aluminum AC/MC/MCI-A cable .43" - .61" O.D. For steel or aluminum 3/8" FMC.

The US-6171 is for steel or aluminum AC/MC/MCI-A cable .617" to .71" O.D.

.210 hole size. Supports multiple sizes. Patented.

File No. E161206

CATALOG #	TRADE SIZE	AC/MC RANGE	
		MIN	MAX
US-4461	3/8"	.43	.61
US-6171	-	.617	.71



Mighty-Hold™ Universal Straps

For PVC jacketed steel MCI-A cable .55" - .71" O.D. .210 hole size. Suitable for use in wet locations. Supports multiple sizes. Stainless Steel. Patented.

File No. E161206

CATALOG #	CABLE SIZE	AC/MC RANGE	
		MIN	MAX
USS-6171	12/2, 10/3	.55	.71



ALI Series



CLI Series

Solderless Lugs

Copper lugs are used with copper conductors and provide high conductivity with lower heat rise. Copper lugs are rated for direct burial. Aluminum lay-in lugs are suitable for use with copper or aluminum conductors.

File No. E155561

Aluminum

CATALOG #	WIRE CAPACITY
ALI-50	4 – 14
ALI-112	1/0 – 14
ALI-252	250 MCM - 6

Copper

CATALOG #	WIRE CAPACITY
CLI-10	4 – 14
CLI-20	4 – 14



Aluminum Solar Panel Grounding Connector

Designed to prevent galvanic reactions and enhance conductivity. The connector body has extruded serrations for breaking the anodized finish on photovoltaic modules and frames.

The serrations in the wire binding break corrosion on the grounding wire, which means that no surface preparation is required for the PV module, the frame or the ground wire.

The unique clamp-on design means no mounting holes are required. The connector simply clamps onto the frame of the solar panel. The unit is UL 467 Listed and accommodates aluminum or copper #4 to 14 AWG. The connectors feature stainless steel hardware.

File No. E20412

CATALOG #	AWG WIRE CAPACITY
ALI-SLR	4 - 14



Bonding Jumper Assembly

Use Bonding Jumper Assembly to comply with Article 250 of the National Electrical Code. Suitable for use on EMT, rigid conduit, or copper water pipe. If used with expansion coupling: assemble ground clamp to conduit 1" from stationary end of coupling.

Attach second ground clamp 2" from sliding end of expansion coupling. NOTE: Total movement is 4". Assembly features bronze ground clamps and copper bonding strip.

File No. E20412

CATALOG #	CONDUIT TRADE SIZE
BJ-100	1/2" – 1"
BJ-200	1 1/4" – 2"
BJ-400	2 1/2" – 4"



Zinc Die Cast Duplex Connectors

Strap type fitting used to connect 14/2 to 10/3 nonmetallic cable to a box or enclosure.

UL File No. E20534 SP File No. LR39354

CATALOG #	K.O. SIZE
601-DC2	1/2"



Knockout Insulating Bushings

Converts metallic box rough edge holes to smooth insulated holes for protection of electrical, voice, data and video cables. Plastic rated at 105°C.

UL File No. E240912 SP File No. LR24719

CATALOG #	K.O. SIZE	K.O. DIAMETER
9791	1/2"	0.875
9792	3/4"	1.109
9793	1"	1.375
9794	1 1/4"	1.734
9795	1 1/2"	1.984
9796	2"	2.469



616-NMD



617-NMD

PVC "Snap-In" Type Connectors

For connecting nonmetallic cable to a box or enclosure. Locknut not required.

UL File No. E11698

CATALOG #	K.O. SIZE	NONMETALLIC CABLE RANGE
616-NMD	1/2"	One 14/2 - 6/2 Two 14/2 - 12/3 In any combination
617-NMD	3/4"	One 8/2, 8/3, 6/2, 6/3

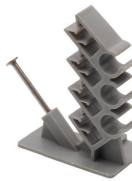


PVC "Snap-In" Type Connectors

For connecting nonmetallic cable to a box or enclosure. Locknut not required.

UL File No. E11698 SP File No. LR74878

CATALOG #	K.O. SIZE	NONMETALLIC CABLE RANGE	
		MIN	MAX
620-NM	1/2"	14/2	10/3
		OR TWO	
621-NM	3/4"	14/2	12/2
		8/3	6/3
		OR TWO	
		12/3	8/3

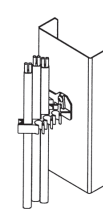


NMWH-43 Cable Stacker

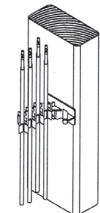
For use on steel or wood studs to support non-metallic sheath, communication and data cables. Furnished with nail for wood stud.

Use #8 x 1/2" self-tapping sheet metal screw for steel stud. Complies with NEC Articles 300-4(D) and 320.23(B). Polypropylene. Patented.

UL US File No. E161206



Metal Stud



Wood Stud

CATALOG #
NMWH-43

Cable Ranges

DATA/COMMUNICATION CABLE		
Oval Openings	1 or 2	.06" to .20" diameter
Oval Openings	1	.20" to .32" diameter

Round Openings	1	.16" to .50" diameter
----------------	---	-----------------------

NONMETALLIC SHEATH CABLE

Oval Openings	1 or 2	14/2 AWG
---------------	--------	----------

Oval Openings	1 or 2	12/2 AWG
---------------	--------	----------

Oval Openings	1	10/2 AWG
---------------	---	----------

Round Openings	1	14/3 AWG
----------------	---	----------

Round Openings	1	12/3 AWG
----------------	---	----------

Round Openings	1	10/3 AWG
----------------	---	----------



Steel Two-Piece Clamp Type Connectors

For connecting nonmetallic cable to a box or enclosure. Locknut not required.

UL File No. E11698: 642 – 644

CATALOG #	K.O. SIZE	NONMETALLIC CABLE RANGE	
		MIN	MAX
642	1/2"	0.180	0.560
643	3/4"	0.250	0.830
644	1 1/4"	0.250	0.980
645	1 1/2"	0.312	1.125

Zinc Die Cast Two Screw, Strap Type Connectors

For connecting nonmetallic cable to a box or enclosure. Can be used with one or two 14/2 or 12/2 NM-B cables or one 14/2 through 10/3 NM-B cable. Also listed for 18/3 to 12/3 SJO cord.

UL File No. E11698: 650-DC2 UL File No. E15123: 670-DC2

SP File No. LR39354

CATALOG #	K.O. SIZE
650-DC2	1/2"



Steel Jack Chain

Supports fixtures. Maximum safe load is 25 lbs.

CATALOG #	SIZE	DESCRIPTION
701	#12	100' Spool
703	#12	300' Bucket

Steel "S" Hooks

Supports fixtures. Maximum safe load is 25 lbs.



CATALOG #	TRADE SIZE
705	1 1/4"

Steel 722 Switch Box Supports

To support switch boxes in wallboard. Installed in pairs.



CATALOG #
722

One Hole Service Entrance Straps

To support oval service entrance cable, types SE and SEU, to a mounting surface. Zinc plated steel.



CATALOG #	SE/SEU RANGE CABLE SIZE
881-SE	#3, #8, #6, #4
882-SE	#3, #3, #2
883-SE	#3, #1, #0, #1/0, #2/0
884-SE	#3/0, #4/0

Steel One Hole Straps

Snap-on strap used to support flexible metal conduit, armored cable or metal clad cable.



UL File No. E161206

CATALOG #	FMC TRADE SIZE	CABLE SIZE	AC/MC RANGE	
			MIN	MAX
890-MC	—	14/2, 12/2	0.475	0.525
891-MC	—	14/3, 12/3	0.540	0.590
900-F	3/8"	12/4, 10/2, 10/3	.560	.610



Steel AC/MC Cable Bracket

Positions AC or MC cables. Galvanized steel construction. Convenient slot and hole for attaching to stud with nails or screws.

UL File No. E161206

CATALOG #	AC/MC RANGE CABLE RANGE
895-MC	Max of (4) 14/2, 14/3, 14/4, 12/2 or 12/3

One Hole Rigid Pipe Straps

To support rigid conduit and IMC to a mounting surface. Zinc plated steel.

UL File No. E161206: 904-S — 908-S & 910-S

SIF File No. LR39354

CATALOG #	TRADE SIZE
901-S	1/2"
902-S	3/4"
903-S	1"
904-S	1 1/4"
905-S	1 1/2"
906-S	2"
907-S	2 1/2"
908-S	3"
909-S	3 1/2"
910-S	4"

Rigid Nail Straps

Used to support rigid conduit and IMC to wood. Zinc plated steel.



CATALOG #	TRADE SIZE
901-NS	1/2"
902-NS	3/4"
903-NS	1"

EMT Nail Straps

Nail type strap to support EMT to a mounting surface. Zinc plated steel.



CATALOG #	TRADE SIZE
920-NS	1/2"
921-NS	3/4"
922-NS	1"



One Hole EMT Straps

To support EMT to a mounting surface. Zinc plated steel.

File No. E161206: 924-S & 925-S

File No. LR39354

CATALOG #	TRADE SIZE
920-S	1/2"
921-S	3/4"
922-S	1"
923-S	1 1/4"
924-S	1 1/2"
925-S	2"



Two Hole Rigid Pipe Straps

Used to support rigid conduit and IMC to a mounting surface. Zinc plated steel.

File No. E161206: 1907 – 1910

File No. LR39354

CATALOG #	TRADE SIZE
1901	1/2"
1902	3/4"
1903	1"
1904	1 1/4"
1905	1 1/2"
1906	2"
1907	2 1/2"
1908	3"
1909	3 1/2"
1910	4"



Aluminum - Service Entrance Cable One Hole Straps

Used to support oval service entrance cable to a mounting service.

File No. E30211709

CATALOG #	SE/SEU RANGE CABLE SIZE
933	3 - #2 to #3
936	3 - 3/0 to #4/0



Two Hole EMT Pipe Straps

To support EMT to a mounting surface. Zinc plated steel.

File No. E161206: 1907 – 1910

File No. LR39354: 1920 – 1925

CATALOG #	TRADE SIZE
1920	1/2"
1921	3/4"
1922	1"
1923	1 1/4"
1924	1 1/2"
1925	2"



Two Hole Service Entrance Straps

To support oval service entrance cable, types SE and SEU, to a mounting surface. Zinc plated steel.

CATALOG #	SE/SEU CABLE SIZE
1881-SE	3 - #8, #6, #4
1882-SE	3 - #3, #2
1883-SE	3 - #1, #0, #1/0, #2/0
1884-SE	3 - #3/0, #4/0



Conduit Hangers

To secure EMT or rigid conduit to a threaded rod, insulator supports or directly to a mounting surface.

2100-BN – 2140-BN come with a carriage bolt and nut. The 2100 thru 2140 have a 2-way slotted/Phillips bolt with integral threads. Zinc plated steel.

File No. E161206

With Bolt

CATALOG #	TRADE SIZE	RIGID	EMT
2100	0	3/8" & 1/2"	1/2"
2110	1	3/4"	3/4"
2120	2	1"	1"
2125	2 1/2	—	1 1/4"
2130	3	1 1/4"	1 1/2"
2140	4	1 1/2"	—

With Bolt and Nut

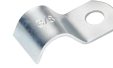
CATALOG #	TRADE SIZE	RIGID	EMT
2100-BN	0	3/8" & 1/2"	1/2"
2110-BN	1	3/4"	3/4"
2120-BN	2	1"	1"
2125-BN	2 1/2	—	1 1/4"
2130-BN	3	1 1/4"	1 1/2"
2140-BN	4	1 1/2"	—



Conduit Hangers with Bolt and Nut

To secure EMT or rigid conduit to a threaded rod, insulator supports or directly to a mounting surface. Zinc plated 304 stainless steel.

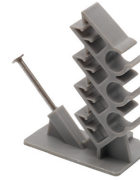
CATALOG #	TRADE SIZE	RIGID	EMT
2100-S	0	3/8" & 1/2"	1/2"
2110-S	1	3/4"	3/4"
2120-S	2	1"	1"
2125-S	2 1/2	—	1 1/4"
2130-S	3	1 1/4"	1 1/2"
2140-S	4	1 1/2"	—
2150-S	5	2"	2"
2160-S	6	2 1/2"	2 1/2"
2170-S	7	3"	3"
2180-S	8	3 1/2"	3 1/2"
2190-S	9	4"	4"



Tubing and Coaxial Straps

Used to support tubing and coaxial cable to a mounting surface. Zinc plated steel.

CATALOG #	TRADE SIZE
CC-25	1/4"
CC-31	5/16"
CC-37	3/8"

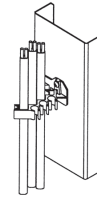


NMWH-43 Cable Stacker

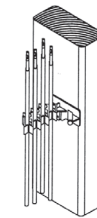
For use on steel or wood studs to support nonmetallic sheath, communication and data cables. Furnished with nail for wood stud.

Use #8 x 1/2" self-tapping sheet metal screw for steel stud. Complies with NEC Articles 300-4(D) and 320.23(B). Polypropylene. Patented.

File No. E161206



Metal Stud



Wood Stud

CATALOG #
NMWH-43

Cable Ranges

DATA/COMMUNICATION CABLE			
Oval Openings	1 or 2	.06" to 20" diameter	
Oval Openings	1	20" to 32" diameter	
Round Openings	1	.16" to .50" diameter	
NONMETALLIC SHEATH CABLE			
Oval Openings	1 or 2	14/2 AWG	
Oval Openings	1 or 2	12/2 AWG	
Oval Openings	1	10/2 AWG	
Round Openings	1	14/3 AWG	
Round Openings	1	12/3 AWG	
Round Openings	1	10/3 AWG	





Polyolefin Coated Steel Mighty-Hold™ Universal Clamp Straps

One piece clamp back and strap secures both cable and conduit. Secures EMT, Rigid, IMC, Metallic Liquid Tight, Nonmetallic Liquid Tight, FMC and Schedule 40 and Schedule 80 PVC conduit, as well as steel and aluminum AC/MC Cable.

Cor-Shield® Polyolefin coating provides a high level of protection and a much more environmentally friendly product than other coated materials. Polyolefin provides an extremely strong shield from a vast variety of corrosive chemicals. Patent Pending.



CATALOG #	TRADE SIZE
UCSC-5075	1/2" - 3/4"
UCSC-75100	3/4" - 1"
UCSC100125	1" - 1 1/4"
UCSC125150	1 1/4" - 1 1/2"
UCSC150200	1 1/2" - 2"

Mighty-Hold™ Universal Straps



For steel or aluminum AC/MC/MCI-A cable. .210 hole size. Supports multiple sizes. Patented.

File No. E161206

CATALOG #	CABLE SIZE	AC/MC RANGE	
		MIN	MAX
US-4461	14/2, 10/3	.43	.61
US-6171	10/4, 8/3	.617	.71

Mighty-Hold™ Universal Straps



For PVC jacketed steel MCI-A cable .55" - .71" O.D. .210 hole size. Suitable for use in wet locations. Supports multiple sizes. Stainless Steel. Patented.

File No. E161206

CATALOG #	CABLE SIZE	AC/MC RANGE	
		MIN	MAX
USS-6171	12/2, 10/3	.55	.71



NEW Zinc Die Cast Grounding Hubs

Used to secure threaded rigid service entrance conduit to box or enclosure. The locknut has an attached lug that allow for installation of a ground wire. Listed for use in wet locations.



CATALOG #	K.O. SIZE	LUG SIZE
166-DCG	2"	14 to 1/0
167-DCG	2 1/2"	14 to 1/0
168-DCG	3"	14 to 1/0
169-DCG	3 1/2"	6 to 3/0
170-DCG	4"	6 to 3/0



Zinc Die Cast Two Screw, Strap Type Connectors

For connecting oval service cable to a box or enclosure.



File No. E15123



File No. LR39354

CATALOG #	K.O. SIZE	OVAL SERVICE CABLE SIZE	
		HEIGHT	WEIGHT
670-DC2	3/4"	0.437	0.625



Zinc Die Cast UF Connectors

Provides watertight seal around underground feeder cable. Tapered NPT threads.



File No. E11698

CATALOG #	TRADE SIZE	CABLE SIZE
761-UF	1/2"	14/2, 12/2, 10/2 (.250 x .500)
762-UF	3/4"	14/3, 12/3, 10/3 (.260 x .720)



Zinc Die Cast Watertight Service Entrance Cable Connectors

Compression type connectors provide a watertight seal around service entrance cable.

CATALOG #	K.O. SIZE	GROMMET OPENING SIZE
765-2	1 1/2"	.865 x 1.325
765-3	1 1/2"	.875 x 1.375
766-2	2"	.860 x 1.340
766-3	2"	.870 x 1.370
766-4	2"	.900 x 1.500
766-4N	2"	1.100 x 1.750



881-SE thru 884-SE

One Hole Service Entrance Straps

To support oval service entrance cable, types SE and SEU, to a mounting surface. Zinc plated steel.

CATALOG #	SE/SEU RANGE CABLE SIZE
881-SE	#3, #8, #6, #4
882-SE	#3, #3, #2
883-SE	#3, #1, #0, #1/0, #2/0
884-SE	#3/0, #4/0



Aluminum One Hole Service Entrance Straps

Used to support oval service entrance cable to a mounting service.



File No. E30211709

CATALOG #	SE/SEU RANGE CABLE SIZE
933	3 - #2 to #3
936	3 - 3/0 to #4/0



Sill Plates

When used with sealing compound, sill plates prevent water from entering the structure.

Aluminum With Screws and Sealing Compound

CATALOG #	SE/SEU RANGE CABLE SIZE
938-C	3 - #2

PVC Without Screws and Sealing Compound

CATALOG #	SE/SEU RANGE CABLE SIZE
938-PVC	3 - #4 to 3-#0



PVC Entrance Caps For Oval Service Entrance Cable

Electrical grade rigid PVC entrance cap with galvanized steel mounting bracket and strap for use with oval service entrance cable.



File No. E15123

CATALOG #	OVAL SERVICE CABLE SIZE
1240-PVC	2 - 8, 6, 4, 2
1241-PVC	2 - 1/0, 2/0
1242-PVC	2 - 3/0, 4/0





PVC Entrance Heads

PVC entrance head for mounting on PVC, rigid, IMC or EMT. Removable EMT adapter sleeve and no-turn square nut allow for fast installation.

UL File No. E9391 SF File No. LR74878

CATALOG #	TRADE SIZE
1251-PVC	1/2"
1252-PVC	3/4"
1253-PVC	1"
1254-PVC	1 1/4"
1255-PVC	1 1/2"
1256-PVC	2"



Two Hole Service Entrance Straps

To support oval service entrance cable, types SE and SEU, to a mounting surface. Zinc plated steel.

CATALOG #	SE/SEU CABLE SIZE
1881-SE	3 - #8, #6, #4
1882-SE	3 - #3, #2
1883-SE	3 - #1, #0, #1/0, #2/0
1884-SE	3 - #3/0, #4/0



Mast Kits

Service entrance mast kits provide an assortment of mast components for installing overhead service drops. Use for both residential and commercial buildings that utilize conduit.

CATALOG #	DESCRIPTION CONTENTS
MK-10020	<p>2" Service Entrance Kit (125-150-200 AMP)</p> <ul style="list-style-type: none"> · Service Head (Cat 1256) · Roof Flashing (Cat RF-200) · Porcelain Wire Holder (Cat MWH-1) · 2" Rigid Pipe Strap (2 pcs.) (Cat 1906)
	<p>2-1/2" Service Entrance Kit (125-150-200 Amp)</p> <ul style="list-style-type: none"> · Service Head (Cat 1257-MT) · Roof Flashing (Cat RF-250) · Conduit Support (2 pcs) · Porcelain Wire Holder (Cat MWH-1)
MK-20025	<p>2-1/2" Service Entrance Kit (125-150-200 Amp)</p> <ul style="list-style-type: none"> · Service Head (Cat 1257-MT) · Porcelain Wire Holder (Cat MWH-1) · Roof Flashing (Cat RF-250) · Conduit Support (2 pcs) · Bottom Reducer



RF125 — RF250

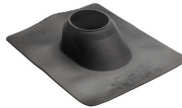
Roof Flashings

Galvanized units for use with galvanized, plastic or cast iron electrical service masts. Fits flats to 40°.

Neoprene units for use with copper, cast iron, galvanized or plastic pipe. Fits flats up to 45° angle. Not recommended for hot-mopped or built-up roofs.

Galvanized

CATALOG #	TRADE SIZE
RF-125	1 1/4"
RF-150	1 1/2"
RF-200	2"
RF-250	2 1/2"



RFN-125 — RFN-400

Neoprene

CATALOG #	TRADE SIZE
RFN-125	1 1/4" - 1 1/2"
RFN-200	2"
RFN-250	2 1/2"
RFN-300	3"
RFN-400	4"




Service Entrance Kits

Service entrance kits provide an assortment of components for electrical service installation.

CATALOG #	DESCRIPTION
SE-KIT100	100 Amp SE Cable Kit
SE-KIT200	200 Amp SE Cable Kit

Bridle Rings

Steel bridle rings provide support for voice, data or video cables. Open loop end allows for easy insertion of cables. Machine thread style has 1/4-20 thread for use with beam clamps or other clamping devices. Wood style rings are threaded for easy assembly into 1/8" diameter pre-drilled holes. Zinc plated steel.

 File No. E161206: BRI-150, BRI-200, BRWI-150 & BRWI-200



BR

Threaded Bridle Rings

CATALOG #	TRADE SIZE
BR-150	1 1/2"
BR-200	2"
BR-400	4"



BRI

Threaded Bridle Rings/Plastic Insulator

CATALOG #	TRADE SIZE
BRI-150	1 1/2"
BRI-200	2"



BRW

Threaded Bridle Rings for Wood

CATALOG #	TRADE SIZE
BRW-150	1 1/2"
BRW-200	2"



BRWI

Threaded Bridle Rings for Wood/Plastic Insulator

CATALOG #	TRADE SIZE
BRWI-150	1 1/2"
BRWI-200	2"



Box Connectors

Used as a raceway between two boxes.

 File No. E11259  File No. LR39354

CATALOG #	TRADE SIZE
1191-DC2	1/2"



Knockout Insulating Bushings

Converts metallic box rough edge holes to smooth insulated holes for protection of electrical, voice, data and video cables. Plastic rated at 105°C.

 File No. E240912  File No. LR24719

CATALOG #	K.O. SIZE	K.O. DIAMETER
9791	1/2"	0.875
9792	3/4"	1.109
9793	1"	1.375
9794	1 1/4"	1.734
9795	1 1/2"	1.984
9796	2"	2.469





Zinc Plated Steel Tubing and Coaxial Straps

Used to support tubing and coaxial cable to a mounting surface.

CATALOG #	TRADE SIZE
CC-25	1/4"
CC-31	5/16"
CC-37	3/8"



Communications/Data Plate Mounting Bracket for Old Work

Eliminates the need for an outlet box. Provides a mounting base for securing communication or data line face plates. Mounts standard low voltage outlets and plates (Class 2 only). Hardware included.

CATALOG #	MATERIAL
LVB-1	Zinc Plated Steel



701 703

Steel Jack Chain

Supports fixtures. Maximum safe load is 25 lbs.

CATALOG #	SIZE	DESCRIPTION
701	#12	100' Spool
703	#12	300' Bucket



"S" Hooks

Supports fixtures. Maximum safe load is 25 lbs.

CATALOG #	TRADE SIZE
705	1 1/4"



Galvanized Steel Safety Plates

Protects cable running through wooden studs from nails and screws.

File No. E161206

CATALOG #
732-SP



Plastic Knockout Plugs

To cap unused knockout holes in a box or enclosure. Plastic.

CATALOG #	TRADE SIZE
9893	1"
9894	1 1/4"
9895	1 1/2"
9896	2"



Box Supports

Supports FS boxes, outdoor lighting fixtures or similar devices per NEC Article 370-23 requirements. Tapered NPT threads provide a raintight seal. Simply assemble the box support onto the box or fixture and fasten to steel rigid conduit or water pipe driven into the ground.

File No. E161206: BS-050

CATALOG #	TRADE SIZE
BS-050	1/2"
BS-075	3/4"



Duct Seal

Used to seal around boxes, flashings and service entries. #1003 asbestos-free sealing compound is pliable, noncorrosive to metals and can be painted. For both indoor and outdoor use.

File No. R14730

CATALOG #	SLUG SIZE
DS-100	1 lb.
DS-500	5 lb.



Steel Expansion Couplings for EMT Conduit

Low cost and easy to use. Assembles like a regular set screw coupling. Use to compensate for plus or minus 2" lateral movement of conduit in dry locations. May be used with optional Bonding Jumper assembly (Cat. Nos. BJ-100, BJ-200 and BJ-400).

See Grounding Section. Patented.

 File No. E24001: EC-075 – EC-200

 File No. E9391: EC-250 – EC-400

CATALOG #	TRADE SIZE
EC-075	3/4"
EC-100	1"
EC-125	1 1/4"
EC-150	1 1/2"
EC-200	2"
EC-250	2 1/2"
EC-300	3"
EC-350	3 1/2"
EC-400	4"



Firestop

A water-based, noncorrosive, nontoxic, odorless quality intumescent. The FS-1000 is rated 3000°F for 8 hours. Adheres to most construction materials including ceramics, composites, masonry, metal, plastic and wood. Can be safely removed with soap and water prior to curing. Paintable and sandable. Classified by UL as a noncombustible product in compliance with zero flame and zero smoke index.

 File No. R25422

CATALOG #	CARTRIDGE SIZE
FS-1000	10.5 fluid ounces



Steel Expansion Couplings for Rigid Conduit

Low cost and easy to use. Assembles like a regular set screw coupling. Use to compensate for plus or minus 2" lateral movement of conduit in dry locations. May be used with optional Bonding Jumper assembly (Cat. Nos. BJ-100, BJ-200 and BJ-400).

See Grounding Section. Patented.

 File No. E24001: EC-075 – EC-200

 File No. E9391: EC-250 – EC-400

CATALOG #	TRADE SIZE
EC-075R	3/4"
EC-100R	1"
EC-125R	1 1/4"
EC-150R	1 1/2"
EC-200R	2"
EC-250	2 1/2"
EC-300	3"
EC-350	3 1/2"
EC-400	4"



BPTFITTINGS.COM

CALL

203.377.5944

FAX

203.381.3488

EMAIL

SALES@BPFITTINGS.COM

DISTRIBUTED BY:



AMERICAN-MADE PRODUCT LISTING

WHEN YOU NEED TO BUY AMERICAN, **BUY BRIDGEPORT.**



AMERICAN-MADE PRODUCTS

BUILT WITH LEGENDARY QUALITY.



MADE IN



THE USA

Since 1925, Bridgeport has been casting a strong, mighty America.

When you think American, think Bridgeport. We're investing in our U.S.-based manufacturing operation in Stratford, Connecticut. We're investing in equipment, improving process automation and developing new products - all in the U.S.

And still today, over two thirds of our product volume is manufactured in the U.S. See the American-made products for your projects here or visit us online at: www.bptfittings.com

TABLE OF CONTENTS

PRODUCTS FOR RIGID CONDUIT _____ pg 2 - pg 7

PRODUCTS FOR EMT CONDUIT _____ pg 8 - pg 14

PRODUCTS FOR LIQUID TIGHT CONDUIT _____ pg 15 - pg 16

PRODUCTS FOR PORTABLE CORD _____ pg 17 - pg 18

PRODUCTS FOR FLEXIBLE METAL CONDUIT _____ pg 19 - pg 22

PRODUCTS FOR AC/MC CABLE _____ pg 23 - pg 26

PRODUCTS FOR GROUNDING _____ pg 27

PRODUCTS FOR NONMETALLIC CABLE _____ pg 28

STRAPS, CLAMPS AND HANGER PRODUCTS _____ pg 29 - pg 32

PRODUCTS FOR SERVICE ENTRANCE _____ pg 33 - pg 34

SPECIALTY PRODUCTS _____ pg 35 - pg 37



Zinc Die Cast Set Screw Connectors

Used to join unthreaded rigid or IMC conduit to a box or enclosure.

CATALOG #	TRADE SIZE
30-DC2	1/2"
31-DC2	3/4"
32-DC2	1"



Zinc Die Cast Set Screw Couplings

Used to join two unthreaded lengths of rigid or IMC conduit.

CATALOG #	TRADE SIZE
40-DC	1/2"
41-DC	3/4"
42-DC	1"



Zinc Die Cast Fitting Locknuts

Used to fasten threaded conduit to an opening in a box or enclosure.

File No. E9391: 101-DC – 106-DC

CATALOG #	TRADE SIZE
101-DC	1/2"
102-DC	3/4"
103-DC	1"
104-DC	1 1/4"
105-DC	1 1/2"
106-DC	2"
107-DC	2 1/2"
108-DC	3"
109-DC	3 1/2"
110-DC	4"



Zinc Die Cast Threaded Hubs

Used to secure threaded rigid service entrance conduit to a box or enclosure. Insulated throat rated – 105°C.

BUNA-N sealing ring completely encircles the knockout to prevent contaminants from entering the enclosure.

File No. E9391: Type 4–Water Tight

File No. LR39354

CATALOG #	TRADE SIZE
156-DC	2"
157-DC	2 1/2"
158-DC	3"
159-DC	3 1/2"
160-DC	4"



Zinc Die Cast Combination Couplings

Set screw type fitting used to join EMT to rigid or IMC.

Furnished with Tri-Drive slot/Phillips/Robertson head screws.

CATALOG #	TRADE SIZE
290-DC	1/2"
291-DC	3/4"
292-DC	1"



Bushings

Used with a locknut to protect conductors inside threaded rigid or IMC conduit when entering a box.

Rounded surface of bushing prevents damage to wire insulation.

File No. E9391: 321 – 332

File No. E11259: 321-B – 330-B

File No. LR39354

Plastic – 105°C

CATALOG #	TRADE SIZE
321	1/2"
322	3/4"
323	1"
324	1 1/4"
325	1 1/2"
326	2"

Cont. Next Page



Bushings Cont.

Plastic - 105°C Cont.

CATALOG #	TRADE SIZE
327	2 1/2"
328	3"
329	3 1/2"
330	4"
331	5"
332	6"

Plastic - 150°C

CATALOG #	TRADE SIZE
321-B	1/2"
322-B	3/4"
323-B	1"
324-B	1 1/4"
325-B	1 1/2"
326-B	2"
327-B	2 1/2"
328-B	3"
329-B	3 1/2"
330-B	4"

Rigid Nail Straps

Used to support rigid conduit and IMC to wood. Zinc plated steel.



CATALOG #	TRADE SIZE
901-NS	1/2"
902-NS	3/4"
903-NS	1"



One Hole Rigid Pipe Straps

Used to support rigid conduit and IMC to a mounting surface. Zinc plated steel.

UL File No. E161206: 904-S — 908-S

SP File No. LR39354

CATALOG #	TRADE SIZE
901-S	1/2"
902-S	3/4"
903-S	1"
904-S	1 1/4"
905-S	1 1/2"
906-S	2"
907-S	2 1/2"
908-S	3"
909-S	3 1/2"
910-S	4"



Reducing Washers

To be used in pairs to reduce the size of knockout holes. Galvanized steel.

UL File No. E11259: 1061 — 1088

SP File No. LR39354: 1061 — 1088

CATALOG #	TRADE SIZE
1061	3/4" - 1/2"
1062	1" - 1/2"
1063	1" - 3/4"
1064	1 1/4" - 1/2"
1065	1 1/4" - 3/4"
1066	1 1/4" - 1"
1067	1 1/2" - 1/2"
1068	1 1/2" - 3/4"
1069	1 1/2" - 1"
1070	1 1/2" - 1 1/4"
1071	2" - 1/2"
1072	2" - 3/4"
1073	2" - 1"
1074	2" - 1 1/4"

Cont. Next Page





Reducing Washers Cont.

CATALOG #	TRADE SIZE
1075	2" - 1 1/2"
1076	2 1/2" - 1/2"
1077	2 1/2" - 3/4"
1078	2 1/2" - 1"
1079	2 1/2" - 1 1/4"
<hr/>	
1080	2 1/2" - 1 1/2"
1081	2 1/2" - 2"
1082	3 - 1/2"
1083	3" - 3/4"
1084	3" - 1"
1085	3" - 1 1/4"
1086	3" - 1 1/2"
1087	3" - 2"
1088	3" - 2 1/2"
1089-1	3 1/2" - 1/2"
1089-2	3 1/2" - 3/4"
1089-3	3 1/2" - 1"
1089-4	3 1/2" - 1 1/4"
1089-5	3 1/2" - 1 1/2"
1089-6	3 1/2" - 2"
1089-7	3 1/2" - 2 1/2"
1089-8	3 1/2" - 3"
<hr/>	
1090-1	4" - 1/2"
1090-2	4" - 3/4"
1090-3	4" - 1"
1090-4	4" - 1 1/4"
1090-5	4" - 1 1/2"
1090-6	4" - 2"
1090-7	4" - 2 1/2"
1090-8	4" - 3"
1090-9	4" - 3 1/2"



Mighty-Seal® Raintight Reducing Sealing Washers

Used when a concentric knockout breaks out larger than expected. Maintains NEMA 3R rating on listed enclosures. Includes one coated and one uncoated washer. Coated washer installs on the exterior of the box. Sunlight resistant. Patent Pending.

 File No. E11259

CATALOG #	TRADE SIZE
1061-RT	3/4" - 1/2"
1062-RT	1" - 1/2"
1063-RT	1" - 3/4"
1065-RT	1 1/4" - 3/4"
1066-RT	1 1/4" - 1"
1071-RT	2" - 1/2"
1072-RT	2" - 3/4"
1073-RT	2" - 1"
1074-RT	2" - 1 1/4"



Conduit Nipples

When used with a locknut, conduit nipples serve as a short raceway between enclosures. Zinc die cast.

 File No. E9391

CATALOG #	TRADE SIZE
1102-DC	1/2"
1103-DC	3/4"
1104-DC	1"
1105-DC	1 1/4"
1106-DC	1 1/2"
1107-DC	2"
1108-DC	2 1/2"
1109-DC	3"
1110-DC	3 1/2"
1111-DC	4"



Conduit Nipples Cont.

Insulated Throat - 105°C

CATALOG #	TRADE SIZE
1102-DCI	1/2"
1103-DCI	3/4"
1104-DCI	1"
1105-DCI	1 1/4"
1106-DCI	1 1/2"
1107-DCI	2"
1108-DCI	2 1/2"
1109-DCI	3"
1110-DCI	3 1/2"
1111-DCI	4"

Offset Nipples

Used to offset the axis of a raceway 3/4" between enclosure runs.

File No. E9391



CATALOG #	TRADE SIZE
1520-DC	1/2"
1521-DC	3/4"
1522-DC	1"
1523-DC	1 1/4"
1524-DC	1 1/2"
1525-DC	2"

Bushing Pennies

Used inside a bushing to prevent foreign matter from entering the conduit. Galvanized steel.



CATALOG #	TRADE SIZE
1661	1/2"
1662	3/4"
1663	1"
1664	1 1/4"
1665	1 1/2"
1666	2"
1667	2 1/2"
1668	3"
1669	3 1/2"
1670	4"
1671	5"



Two Hole Rigid Pipe Straps

Used to support rigid conduit and IMC to a mounting surface. Zinc plated steel.

File No. E161206: 1907 – 1910

File No. LR39354

CATALOG #	TRADE SIZE
1901	1/2"
1902	3/4"
1903	1"
1904	1 1/4"
1905	1 1/2"
1906	2"
1907	2 1/2"
1908	3"
1909	3 1/2"
1910	4"

Steel Compression Connectors

Used to join unthreaded steel rigid conduit to a box or enclosure.

File No. E9391



CATALOG #	TRADE SIZE
3000-US	1/2"
3001-US	3/4"
3002-US	1"
3003-US	1 1/4"
3004-US	1 1/2"
3005-US	2"

Steel Compression Couplings

Used to join two lengths of unthreaded steel rigid conduit.

File No. E9391



CATALOG #	TRADE SIZE
3100-US	1/2"
3101-US	3/4"
3102-US	1"
3103-US	1 1/4"
3104-US	1 1/2"
3105-US	2"





Steel Set Screw Connectors

Used to join unthreaded rigid or IMC conduit to a box or enclosure.

File No. E9391

CATALOG #	TRADE SIZE
3500-US	1/2"
3501-US	3/4"
3502-US	1"
3503-US	1 1/4"
3504-US	1 1/2"
3505-US	2"



Steel Set Screw Couplings

Used to join two unthreaded lengths of rigid or IMC conduit.

File No. E9391

CATALOG #	TRADE SIZE
3600-US	1/2"
3601-US	3/4"
3602-US	1"
3603-US	1 1/4"
3604-US	1 1/2"
3605-US	2"



Steel Expansion Couplings

Low cost and easy to use. Assembles like a regular set screw coupling. Use to compensate plus or minus 2" lateral movement of conduit in dry locations. May be used with optional Bonding Jumper assembly (Cat. Nos. BJ-100, BJ-200 and BJ-400).

See Grounding Section. Patented.

File No. E24001

CATALOG #	TRADE SIZE
EC-075R	3/4"
EC-100R	1"
EC-125R	1 1/4"
EC-150R	1 1/2"
EC-200R	2"
EC-250	2 1/2"
EC-300	3"
EC-350	3 1/2"
EC-400	4"



Conduit Body Covers

Encloses conduit body, supplied with screws.

File No. E11077: SC-41 – SC-49

Aluminum

CATALOG #	TRADE SIZE
SC-41	1/2"
SC-42	3/4"
SC-43	1"
SC-44	1 1/4" - 1 1/2"
SC-46	2"
SC-47	2 1/2" - 3"
SC-49	3 1/2" - 4"

Steel

CATALOG #	TRADE SIZE
SC-61	1/2"
SC-62	3/4"
SC-63	1"
SC-64	1 1/4" - 1 1/2"
SC-66	2"
SC-67	2 1/2" - 3"
SC-69	3 1/2" - 4"



Conduit Body Gaskets

SG series provides dust-tight seal between conduit and body and cover.

SGN series provides both dust-tight and rain-tight protection.

SGN gaskets are impervious to most liquids and oils.

Cellulose

CATALOG #	TRADE SIZE
SG-61	1/2"
SG-62	3/4"
SG-63	1"
SG-64	1 1/4" - 1 1/2"
SG-66	2"

Neoprene

CATALOG #	TRADE SIZE
SGN-61	1/2"
SGN-62	3/4"
SGN-63	1"
SGN-64	1 1/4" - 1 1/2"
SGN-66	2"
SGN-67	2 1/2" - 3"
SGN-69	3 1/2" - 4"



NEW Polyolefin Coated Steel Mighty-Hold™ Universal Clamp Straps

One piece clamp back and strap secures both cable and conduit. Secures EMT, Rigid, IMC, Metallic Liquid Tight, Nonmetallic Liquid Tight, FMC and Schedule 40 and Schedule 80 PVC conduit, as well as steel and aluminum AC/MC Cable.

Cor-Shield® Polyolefin coating provides a high level of protection and a much more environmentally friendly product than other coated materials. Polyolefin provides an extremely strong shield from a vast variety of corrosive chemicals. Patent Pending.



CATALOG #	TRADE SIZE
UCSC-5075	1/2" - 3/4"
UCSC-75100	3/4" - 1"
UCSC100125	1" - 1 1/4"
UCSC125150	1 1/4" - 1 1/2"
UCSC150200	1 1/2" - 2"



Low Profile Zinc Die Cast Compression Connectors

Used to join EMT to a box or enclosure.

File No. E24001

CATALOG #	TRADE SIZE
225-DC	1/2"
226-DC	3/4"



1/2" thru 1"

Zinc Die Cast Set Screw Connectors

Used to join EMT to a box or enclosure. 2" thru 4" UL listed for both steel and aluminum EMT.

1/2" thru 2" furnished with Tri-Drive slot/Phillips/Robertson head screws.

File No. E24001 File No. LR39354

CATALOG #	TRADE SIZE
230-DC2	1/2"
231-DC2	3/4"
232-DC2	1"
233-DC2	1 1/4"
234-DC2	1 1/2"
235-DC2	2"
236-DC2	2 1/2"
237-DC2	3"
238-DC2	3 1/2"
239-DC2	4"



1 1/4" thru 2"



2 1/2" thru 4"

Insulated Throat - 105°C

CATALOG #	TRADE SIZE
230-DCI2	1/2"
231-DCI2	3/4"
232-DCI2	1"
233-DCI2	1 1/4"
234-DCI2	1 1/2"
235-DCI2	2"
236-DCI2	2 1/2"
237-DCI2	3"
238-DCI2	3 1/2"
239-DCI2	4"



1/2" thru 2"

Steel Set Screw Connectors

Used to join EMT to a box or enclosure.

File No. E24001

CATALOG #	TRADE SIZE
230-US	1/2"
231-US	3/4"
232-US	1"
233-US	1 1/4"
234-US	1 1/2"
235-US	2"
236-US	2 1/2"
237-US	3"
238-US	3 1/2"
239-US	4"



2 1/2" thru 4"

Insulated Throat - 105°C

CATALOG #	TRADE SIZE
230-USI	1/2"
231-USI	3/4"
232-USI	1"
233-USI	1 1/4"
234-USI	1 1/2"
235-USI	2"
236-USI	2 1/2"
237-USI	3"
238-USI	3 1/2"
239-USI	4"



1/2" thru 2"



1 1/4" thru 2"



2 1/2" thru 4"

Zinc Die Cast Set Screw Couplings

Used to join two lengths of EMT. 1/2" thru 2" furnished with Tri-Drive slot/Phillips/Robertson head screws.

File No. E24001 File No. LR39354

CATALOG #	TRADE SIZE
240-DC	1/2"
241-DC	3/4"
242-DC	1"
243-DC	1 1/4"
244-DC	1 1/2"
245-DC	2"
246-DC	2 1/2"
247-DC	3"
248-DC	3 1/2"
249-DC	4"

Steel Set Screw Couplings

Used to join two lengths of EMT.

File No. E24001



1/2" thru 2"



2 1/2" thru 4"

CATALOG #	TRADE SIZE
240-US	1/2"
241-US	3/4"
242-US	1"
243-US	1 1/4"
244-US	1 1/2"
245-US	2"
246-US	2 1/2"
247-US	3"
248-US	3 1/2"
249-US	4"



Zinc Die Cast Mighty-Align® EMT Slip Couplings

Used to join two lengths of EMT in tight or limited access applications. Back out center screw, slide coupling over one end of conduit and then slide other conduit into place. Fully install center screw between conduits and tighten set screws. Patents Pending.

File No. E24001

CATALOG #	TRADE SIZE
241-DCSLP	3/4"
242-DCSLP	1"
245-DCSLP	2"
247-DCSLP	3"
249-DCSLP	4"

Zinc Die Cast Compression Connectors

Used to join EMT to a box or enclosure. 2 1/2" and larger suitable for aluminum or steel EMT and rigid.

File No. E24001 File No. LR39354



CATALOG #	TRADE SIZE
250-DC2	1/2"
251-DC2	3/4"
252-DC2	1"
253-DC2	1 1/4"
254-DC	1 1/2"
255-DC	2"
256-DC	2 1/2"
257-DC"	3"
258-DC	3 1/2"
259-DC	4"

Cont. Next Page



Zinc Die Cast Compression Connectors Cont.

Insulated Throat - 105°C

CATALOG #	TRADE SIZE
250-DCI2	1/2"
251-DCI2	3/4"
252-DCI2	1"
253-DCI2	1 1/4"
254-DCI2	1 1/2"
255-DCI2	2"
256-DCI2	2 1/2"
257-DCI2	3"
258-DCI2	3 1/2"
259-DCI2	4"

Zinc Die Cast Raintight Compression Connectors Cont.

Insulated Throat - 90°C

CATALOG #	TRADE SIZE
250-RTI2US	1/2"
251-RTI2US	3/4"
252-RTI2	1"
253-RTI2	1 1/4"
254-RTI2	1 1/2"
255-RTI2	2"
256-RTI2	2 1/2"
257-RTI2	3"
258-RTI2*	3 1/2"
259-RTI2*	4"

* Consult factory for availability



Zinc Die Cast Raintight Compression Connectors

Compression style connector with internal sealing ring and knockout gasket to create a raintight seal when connecting EMT to a box or enclosure. Patented.

File No. E24001

CATALOG #	TRADE SIZE
250-RT2US	1/2"
251-RT2US	3/4"
252-RT2	1"
253-RT2	1 1/4"
254-RT2	1 1/2"
255-RT2	2"
256-RT2	2 1/2"
257-RT2	3"
258-RT2*	3 1/2"
259-RT2*	4"

* Consult factory for availability



Steel Compression Connectors

Used to join EMT to a box or enclosure.

File No. E24001

CATALOG #	TRADE SIZE
250-US	1/2"
251-US	3/4"
252-US	1"
253-US	1 1/4"
254-US	1 1/2"
255-US	2"
256-US	2 1/2"
257-US	3"
258-US	3 1/2"
259-US	4"

Insulated Throat - 105°C

CATALOG #	TRADE SIZE
250-USI	1/2"
251-USI	3/4"
252-USI	1"
253-USI	1 1/4"
254-USI	1 1/2"
255-USI	2"
256-USI	2 1/2"
257-USI	3"
258-USI	3 1/2"
259-USI	4"



Zinc Die Cast Compression Couplings

Used to join two lengths of EMT. 2 1/2" and larger are suitable for aluminum or steel EMT and rigid.

File No. E24001 File No. LR39354

CATALOG #	TRADE SIZE
260-DC	1/2"
261-DC	3/4"
262-DC	1"
263-DC	1 1/4"
264-DC	1 1/2"
265-DC	2"
266-DC	2 1/2"
267-DC	3"
268-DC	3 1/2"
269-DC	4"

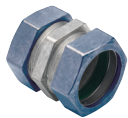


Steel Compression Couplings

Used to join two lengths of EMT.

File No. E24001

CATALOG #	TRADE SIZE
260-US	1/2"
261-US	3/4"
262-US	1"
263-US	1 1/4"
264-US	1 1/2"
265-US	2"
266-US	2 1/2"
267-US	3"
268-US	3 1/2"
269-US	4"



Zinc Die Cast Raintight Compression Couplings

Compression style coupling used to join two lengths of EMT. Internal sealing ring creates a raintight seal. Patented.

File No. E24001

CATALOG #	TRADE SIZE
260-RTUS	1/2"
261-RTUS	3/4"
262-RT	1"
263-RT	1 1/4"
264-RT	1 1/2"
265-RT	2"
266-RT	2 1/2"
267-RT	3"
268-RT*	3 1/2"
269-RT*	4"

* Consult factory for availability



Quick Install EMT Connectors

Quickly joins EMT to box or enclosure without the use of a locknut.

Simply:

- Insert fitting into the locknut
- Insert EMT into the fitting
- Tighten the set screw to simultaneously secure the EMT and the fitting into the knockout.

File No. E24001

Insulated Throat - 105°C

CATALOG #	TRADE SIZE
1701-DCI	1/2"
1702-DCI	3/4"



NEW **Mighty-Merge® 280SPMB Series Snap-In/Push-On Transition Couplings**

The patented Mighty-Merge design has a quick install snap-in end for AC/MC/HCF cables and flexible metal conduit and a labor saving push-on end for 3/4" EMT.

Ideal for transitioning to fixtures and equipment above ceilings and for continuing the speed of armored cables down the wall to emergency lights, devices and panels. Great for use with larger diameter MC PCS Luminary Cable.

File No. E9391

Insulated Throat - 105°C

CATALOG #	TRADE SIZE
280SPMB	1/2"
281SPMB	3/4"



One Hole EMT Straps

To support EMT to a mounting surface. Zinc plated steel.

File No. E161206: 924-S & 925-S

File No. LR39354

CATALOG #	TRADE SIZE
920-S	1/2"
921-S	3/4"
922-S	1"
923-S	1 1/4"
924-S	1 1/2"
925-S	2"



Zinc Die Cast Combination Couplings

Set screw type fitting used to join EMT to rigid or IMC. Furnished with Tri-Drive slot/Phillips/Robertson head screws.

CATALOG #	TRADE SIZE
290-DC	1/2"
291-DC	3/4"
292-DC	1"



Two Hole EMT Pipe Straps

To support EMT to a mounting surface. Zinc plated steel.

File No. LR39354

CATALOG #	TRADE SIZE
1920	1/2"
1921	3/4"
1922	1"
1923	1 1/4"
1924	1 1/2"
1925	2"



Zinc Die Cast Combination Couplings

Used to join EMT to flexible metal conduit. Screw-in end for flex. Compression end for EMT.

File No. E9391
(581-DC also UL listed for use with XRWFMC)

CATALOG #	TRADE SIZE
581-DC	1/2"
582-DC	3/4"
583-DC	1"



Steel Expansion Couplings

Low cost and easy to use. Assembles like a regular set screw coupling. Use to compensate for plus or minus 2" lateral movement of conduit in dry locations.

May be used with optional Bonding Jumper assembly (Cat. Nos. BJ-100, BJ-200 and BJ-400). (See Grounding Section) Patented.

File No. E24001

CATALOG #	TRADE SIZE
EC-075	3/4"
EC-100	1"
EC-125	1 1/4"
EC-150	1 1/2"
EC-200	2"
EC-250	2 1/2"
EC-300	3"
EC-350	3 1/2"
EC-400	4"



EMT Nail Straps


To support EMT to a mounting surface. Zinc plated steel.

CATALOG #	TRADE SIZE
920-NS	1/2"
921-NS	3/4"
922-NS	1"



Conduit Body Covers

Encloses conduit body; supplied with screws. Aluminum.

 File No. E11077

CATALOG #	TRADE SIZE
SC-41	1/2"
SC-42	3/4"
SC-43	1"
SC-44	1 1/4" - 1 1/2"
SC-46	2"
SC-47	2 1/2" - 3"
SC-49	3 1/2" - 4"

Conduit Body Gaskets



SG series provides dust-tight seal between conduit and body and cover.

SGN series provides both dust-tight and rain-tight protection.

SGN gaskets are impervious to most liquids and oils.

Cellulose

CATALOG #	TRADE SIZE
SG-61	1/2"
SG-62	3/4"
SG-63	1"
SG-64	1 1/4" - 1 1/2"
SG-66	2"

Neoprene

CATALOG #	TRADE SIZE
SGN-61	1/2"
SGN-62	3/4"
SGN-63	1"
SGN-64	1 1/4" - 1 1/2"
SGN-66	2"
SGN-67	2 1/2" - 3"
SGN-69	3 1/2" - 4"



Polyolefin Coated Steel Mighty-Hold™ Universal Clamp Straps

One piece clamp back and strap secures both cable and conduit. Secures EMT, Rigid, IMC, Metallic Liquid Tight, Nonmetallic Liquid Tight, FMC and Schedule 40 and Schedule 80 PVC conduit, as well as steel and aluminum AC/MC Cable.

Cor-Shield® Polyolefin coating provides a high level of protection and a much more environmentally friendly product than other coated materials. Polyolefin provides an extremely strong shield from a vast variety of corrosive chemicals. Patent Pending.



CATALOG #	TRADE SIZE
UCSC-5075	1/2" - 3/4"
UCSC-75100	3/4" - 1"
UCSC100125	1" - 1 1/4"
UCSC125150	1 1/4" - 1 1/2"
UCSC150200	1 1/2" - 2"



Mighty-Seal® and Mighty-Bite™ Connectors and Couplings

Connecting EMT conduit in wet or dry locations has never been this fast and simple. Mighty-Seal® and Mighty-Bite™ connectors and couplings are part of the exclusive Mighty-B line of high-quality, high-performance products focused on getting the job done fast, done right.

Legendary Bridgeport quality, innovation and unparalleled service are built in to every Mighty-B fitting we ship. All Mighty-B fittings exceed the stringent design requirements of UL 514B and the National Electrical Code. Just push the fitting onto the conduit.

Features:

- Push-on install
- Removable and reusable
- Raintight and dry location models
- Concrete-tight
- Constructed of the highest quality zinc
- Corrosion resistant
- Precision cast threads
- Reversible zinc serrated locknut
- cULus Listed
- Approximately 75% quicker to install than conventional fittings
- Patented



Mighty-Bite™ Dry-Location Connectors

File No. E24001

CATALOG #	TRADE SIZE
250-MB	1/2"
251-MB	3/4"



Mighty-Seal® Raintight Connectors (Insulated)

File No. E24001

CATALOG #	TRADE SIZE
250-MSRTI	1/2"
251-MSRTI	3/4"



Mighty-Bite™ Dry-Location Connectors (Insulated)

File No. E24001

CATALOG #	TRADE SIZE
250-MBI	1/2"
251-MBI	3/4"



Mighty-Bite™ Dry-Location Couplings

File No. E24001

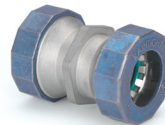
CATALOG #	TRADE SIZE
260-MB	1/2"
261-MB	3/4"



Mighty-Seal® Raintight Connectors

File No. E24001

CATALOG #	TRADE SIZE
250-MSRT	1/2"
251-MSRT	3/4"



Mighty-Seal® Raintight Couplings

File No. E24001

CATALOG #	TRADE SIZE
260-MSRT	1/2"
261-MSRT	3/4"



Straight Zinc Die Cast Liquid Tight Connectors

For use with metallic and nonmetallic "Type B" liquid tight conduit.

File No. E9391 File No. LR39354

CATALOG #	TRADE SIZE
434-LT2	1 1/2"
435-LT2	2"
436-LT2	2 1/2"
437-LT2	3"
438-LT2	3 1/2"
439-LT2	4"

Insulated Throat - 105°C

CATALOG #	TRADE SIZE
434-LTI2	1 1/2"
435-LTI2	2"
436-LTI2	2 1/2"
437-LTI2	3"
438-LTI2	3 1/2"
439-LTI2	4"

Straight Steel Liquid Tight Connectors

For use with metallic liquid tight conduit. Zinc Electroplated.

Suitable for use in:
 Class 1 Division 2
 Class II Divisions 1 & 2
 Class III Divisions 1 & 2 per NEC 501.30 (B)

File No. E9391

CATALOG #	TRADE SIZE
429-SLTUS	3/8"
430-SLTUS	1/2"
431-SLTUS	3/4"
432-SLTUS	1"
433-SLTUS	1 1/4"
434-SLTUS	1 1/2"
435-SLTUS	2"
436-SLTUS	2 1/2"
437-SLTUS	3"
438-SLTUS	3 1/2"
439-SLTUS	4"



Straight Steel Liquid Tight Connectors Cont.

Insulated Throat - 105°C

CATALOG #	TRADE SIZE
429-SLTIUS	3/8"
430-SLTIUS	1/2"
431-SLTIUS	3/4"
432-SLTIUS	1"
433-SLTIUS	1 1/4"
434-SLTIUS	1 1/2"
435-SLTIUS	2"
436-SLTIUS	2 1/2"
437-SLTIUS	3"
438-SLTIUS	3 1/2"
439-SLTIUS	4"

45° Malleable Iron Liquid Tight Connectors

For use with metallic liquid tight conduit. Zinc Electroplated.

Suitable for use in:
 Class 1 Division 2
 Class II Divisions 1 & 2
 Class III Divisions 1 & 2 per NEC 501.30 (B)

File No. E9391



CATALOG #	TRADE SIZE
449-SLTUS	3/8"
450-SLTUS	1/2"
451-SLTUS	3/4"
452-SLTUS	1"
453-SLTUS	1 1/4"
454-SLTUS	1 1/2"
455-SLTUS	2"
456-SLTUS	2 1/2"
457-SLTUS	3"
458-SLTUS	3 1/2"
459-SLTUS	4"

Cont. Next Page



45° Malleable Iron Liquid Tight Connectors Cont.

Insulated Throat - 105°C

CATALOG #	TRADE SIZE
449-SLTIUS	3/8"
450-SLTIUS	1/2"
451-SLTIUS	3/4"
452-SLTIUS	1"
453-SLTIUS	1 1/4"
454-SLTIUS	1 1/2"
455-SLTIUS	2"
456-SLTIUS	2 1/2"
457-SLTIUS	3"
458-SLTIUS	3 1/2"
459-SLTIUS	4"



90° Malleable Iron Liquid Tight Connectors

For use with metallic liquid tight conduit. Zinc Electroplated.

Suitable for use in:
 Class I Division 2
 Class II Divisions 1 & 2
 Class III Divisions 1 & 2 per NEC 501.30 (B)

File No. E9391

CATALOG #	TRADE SIZE
469-SLTUS	3/8"
470-SLTUS	1/2"
471-SLTUS	3/4"
472-SLTUS	1"
473-SLTUS	1 1/4"
474-SLTUS	1 1/2"
475-SLTUS	2"
476-SLTUS	2 1/2"
477-SLTUS	3"
478-SLTUS	3 1/2"
479-SLTUS	4"



Insulated Throat - 105°C

CATALOG #	TRADE SIZE
469-SLTIUS	3/8"
470-SLTIUS	1/2"
471-SLTIUS	3/4"
472-SLTIUS	1"
473-SLTIUS	1 1/4"
474-SLTIUS	1 1/2"
475-SLTIUS	2"
476-SLTIUS	2 1/2"
477-SLTIUS	3"
478-SLTIUS	3 1/2"
479-SLTIUS	4"

Zinc Die Cast Combination Couplings

Use to join either metallic or nonmetallic (Type "B") liquid tight to EMT. Concrete-tight. UL Listed "Raintight."

File No. E24001

CATALOG #	TRADE SIZE (EMT & LT)
4362-DC	1"
4363-DC	1 1/4"
4364-DC	1 1/2"
4365-DC	2"



Polyolefin Coated Steel Mighty-Hold™ Universal Clamp Straps

One piece clamp back and strap secures both cable and conduit. Secures EMT, Rigid, IMC, Metallic Liquid Tight, Nonmetallic Liquid Tight, FMC and Schedule 40 and Schedule 80 PVC conduit, as well as steel and aluminum AC/MC Cable.

Cor-Shield® Polyolefin coating provides a high level of protection and a much more environmentally friendly product than other coated materials. Polyolefin provides an extremely strong shield from a vast variety of corrosive chemicals. Patent Pending.



CATALOG #	TRADE SIZE
UCSC-5075	1/2" - 3/4"
UCSC-75100	3/4" - 1"
UCSC100125	1" - 1 1/4"
UCSC125150	1 1/4" - 1 1/2"
UCSC150200	1 1/2" - 2"



PVC "Snap-In" Type Connectors

For connecting portable cord to a box or enclosure. Locknut not required.

File No. E11698 File No. LR74878

CATALOG #	TRADE SIZE	CORD RANGE
620-NM	1/2"	19/64 - 19/32 *
621-NM	3/4"	1/2 - 27/32

* Or two cords 19/64



Two Screw, Strap Type Connector

For connecting SJO cord to a box or enclosure. Also listed for NM-B cable.

File No. E11698

CATALOG #	TRADE SIZE	CORD RANGE
650-DC2	1/2"	18/3 - 12/3



Zinc Die Cast Straight Cord Grip Connectors

For use with any flexible cord. Provides liquid tight, watertight protection. Tapered (NPT) threads.

Furnished with polyethylene knockout gasket and locknut.

File No. E11259 File No. LR39354

CATALOG #	TRADE SIZE	CORD RANGE
770-22	1/2"	.125" - .187"
770-32	1/2"	.187" - .250"
770-42	1/2"	.250" - .375"
770-52	1/2"	.375" - .500"
770-62	1/2"	.500" - .625"
770-72	1/2"	.625" - .750"
771-32	3/4"	.250" - .375"
771-42	3/4"	.375" - .500"
771-52	3/4"	.500" - .625"
771-62	3/4"	.625" - .750"
772-32	1"	.500" - .625"
772-42	1"	.625" - .750"
772-52	1"	.750" - .875"
772-62	1"	.875" - 1.000"



Straight Cord Grip Connectors

Designed to meet the requirements of rugged service on all types of equipment. -105°C color coded grommets clearly indicate the minimum-maximum cable diameter range.

File No. E11259

Steel

CATALOG #	TRADE SIZE	CORD RANGE
CG770-250	1/2"	.150" - .250"
CG770-350	1/2"	.250" - .350"
CG770-450	1/2"	.350" - .450"
CG770-560	1/2"	.450" - .550"
CG770-650	1/2"	.550" - .650"
CG771-250	3/4"	.150" - .250"
CG771-350	3/4"	.250" - .350"
CG771-450	3/4"	.350" - .450"
CG771-560	3/4"	.450" - .550"
CG771-650	3/4"	.550" - .650"
CG771-750	3/4"	.650" - .750"
CG771-850	3/4"	.750" - .850"
CG772-560	1"	.450" - .550"
CG772-650	1"	.550" - .650"
CG772-750	1"	.650" - .750"
CG772-850	1"	.750" - .850"
CG772-950	1"	.850" - .950"
CG772-1050	1"	.950" - 1.050"
CG773-850	1 1/4"	.750" - .850"
CG773-950	1 1/4"	.850" - .950"
CG773-1050	1 1/4"	.950" - 1.050"
CG773-1150	1 1/4"	1.050" - 1.150"
CG773-1250	1 1/4"	1.150" - 1.250"
CG773-1375	1 1/4"	1.250" - 1.375"
CG774-1050	1 1/2"	.950" - 1.050"
CG774-1150	1 1/2"	1.050" - 1.150"
CG774-1250	1 1/2"	1.150" - 1.250"
CG774-1375	1 1/2"	1.250" - 1.375"

Cont. Next Page



**Straight Cord Grip Connectors
Cont.**

Aluminum

CATALOG #	TRADE SIZE	CORD RANGE
CGA770250	1/2"	.150" - .250"
CGA770350	1/2"	.250" - .350"
CGA770450	1/2"	.350" - .450"
CGA770560	1/2"	.450" - .550"
CGA770650	1/2"	.550" - .650"
CGA771250	3/4"	.150" - .250"
CGA771350	3/4"	.250" - .350"
CGA771450	3/4"	.350" - .450"
CGA771560	3/4"	.450" - .550"
CGA771650	3/4"	.550" - .650"
CGA771750	3/4"	.650" - .750"
CGA771850	3/4"	.750" - .850"
CGA772560	1"	.450" - .550"
CGA772650	1"	.550" - .650"
CGA772750	1"	.650" - .750"
CGA772850	1"	.750" - .850"
CGA772950	1"	.850" - .950"
CGA7721050	1"	.950" - .1050"



403-DC2

Zinc Die Cast Set Squeeze Connectors

To connect flexible metal conduit to a box or enclosure.

File No. E9391

File No. LR39354: 408-DC2

CATALOG #	TRADE SIZE
403-DC2	3/8"
407-DC2	1/2"
408-DC2	3/4"z
410-DC2	1"
412-DC2	1 1/4"
414-DC2	1 1/2"
416-DC2	2"
417-DC2	2 1/2"
418-DC2	3"
419-DC2	3 1/2"
420-DC2	4"



1/2" thru 2"



2 1/2" thru 4"

Insulated Throat - 105°C

CATALOG #	TRADE SIZE
407-DCI2	1/2"
408-DCI2	3/4"
410-DCI2	1"
412-DCI2	1 1/4"
414-DCI2	1 1/2"
416-DCI2	2"

Zinc Die Cast Squeeze Connector with Grounding Lug

To connect flexible metal conduit and AC cable to a box or enclosure. Copper grounding lug range #14 to #6 AWG. For FMC use #1003 Anti-Short Brushing.

File No. E20412

CATALOG #	TRADE SIZE
407-DC2G	1/2"



Zinc Die Cast Set Screw Connectors

To connect flexible metal conduit to a box or enclosure.

File No. E9391

File No. LR39354

CATALOG #	TRADE SIZE
507-DC2	1/2"
508-DC2	3/4"

Insulated Throat - 105°C

CATALOG #	TRADE SIZE
507-DCI2	1/2"
508-DCI2	3/4"

Zinc Die Cast Screw-In Connectors

To connect flexible metal conduit to a box or enclosure.

File No. E9391 (520-DC2 and 520-DCI2 also UL listed for use with XRWFCM)

File No. LR39354: 519-DC2 – 521-DC2; 519-DCI2 – 521-DCI2

CATALOG #	TRADE SIZE
519-DC2	3/8"
520-DC2	1/2"
521-DC2	3/4"
522-DC2	1"
523-DC2	1 1/4"
524-DC2	1 1/2"
525-DC2	2"

Insulated Throat - 105°C

CATALOG #	TRADE SIZE
520-DCI2	1/2"
521-DCI2	3/4"
522-DCI2	1"
523-DCI2	1 1/4"
524-DCI2	1 1/2"
525-DCI2	2"





Zinc Die Cast Screw-In Couplings

Used to join two lengths of flexible metal conduit.

UL File No. E9391 (530-DC also UL listed for use with XRWFMC)

CATALOG #	TRADE SIZE
530-DC	1/2"
531-DC	3/4"
532-DC	1"
533-DC	1 1/4"
534-DC	1 1/2"
535-DC	2"



Zinc Die Cast Combination Couplings

Used to join EMT to flexible metal conduit. Screw-in end for flex. Compression end for EMT.

UL File No. E9391 (581-DC also UL listed for use with XRWFMC)

CATALOG #	TRADE SIZE
581-DC	1/2"
582-DC	3/4"
583-DC	1"



590-DC2

Zinc Die Cast Snap Type Connectors

For connecting 1 1/2 to 1 3/8 aluminum or steel AC/MC cable or 3/8" flexible metal conduit to a box or enclosure. Patent Pending.

UL File No. E20534

CATALOG #	TRADE SIZE
590-DC2	3/8"



590-DC12

Insulated Throat - 105°C

CATALOG #	TRADE SIZE
590-DC12	3/8"



600-DC2



602-DC2

Zinc Die Cast Duplex Connectors

Set screw type connectors used to connect flexible metal steel conduit to a box or enclosure.

CATALOG #	TRADE SIZE
600-DC2	3/8"
602-DC2	3/8"



601-DC2



630-DC2

Zinc Die Cast Duplex Connectors

Strap type connectors used to connect flexible metal conduit to a box or enclosure.

UL File No. E20534

SP File No. LR39354: 601-DC2

CATALOG #	TRADE SIZE
601-DC2	3/8"
630-DC2	3/8"



Zinc Die Cast Two Screw Strap Type Connectors

Used to connect flexible metal conduit to a box or enclosure.

UL File No. E20534

CATALOG #	TRADE SIZE
653-DC2	1/2"



Zinc Die Cast 90° Connectors

90° connectors with cover used for connecting flexible metal conduit to a box or enclosure.

804-DC2 — 808-DC2 and 804-DCI2 — 808-DCI2 also suitable for use with armored cable.

File No. E9391:
801-DC2, 809-DC2, 810-DC2, 801-DCI2, 809-DCI2 and 810-DCI2

File No. E20534:
804-DC2, 806-DC2, 807-DC2, 808-DC2, 804-DCI2, 806-DCI2, 807-DCI2 and 808-DCI2

File No. LR39354

CATALOG #	TRADE SIZE
801-DC2	3/8"
804-DC2	1/2"
806-DC2	3/4"
807-DC2	1"
808-DC2	1 1/4"
809-DC2	1 1/2"
810-DC2	2"

Insulated Throat - 105°C

CATALOG #	TRADE SIZE
801-DCI2	3/8"
804-DCI2	1/2"
806-DCI2	3/4"
807-DCI2	1"
808-DCI2	1 1/4"
809-DCI2	1 1/2"
810-DCI2	2"



Whipper-Snap® Two Screw Strap Type Connector

Used to connect 3/8" steel or aluminum flexible metal conduit to a box or enclosure. Rectangular opening. Zinc die cast. Patented.

File No. E9391

CATALOG #	TRADE SIZE
840SP	3/8"



Whipper-Snap® Duplex Connector

The 846SP is a strap type fitting with external spring steel locking tabs that allow the connector to simply snap into the electrical box. Use with 1/2 to 10/4 armored or metal clad cable or 3/8" flexible metal conduit. Zinc die cast. Patented.

File No. E20534

CATALOG #	TRADE SIZE
846SP	3/8"



Whipper-Snap® 90° Connector Double-Screw Design

Simply snap connector into electrical box. External spring steel locking tabs secures connector to box. Zinc die cast. Patented.

File No. E25034

CATALOG #	TRADE SIZE
850SP	3/8"

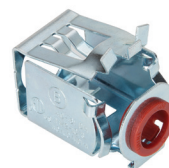


One Hole FMC and AC/MC Straps

Snap-on strap used to support flexible metal conduit, armored cable or metal clad cable.

File No. E161206

CATALOG #	FMC TRADE SIZE	CABLE SIZE	AC/MC RANGE	
			MIN	MAX
900-F	3/8"	12/4, 10/2, 10/3	.560	.610



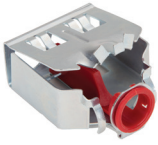
Steel E-Z Lock™ Quick Install Connectors

Used to connect 1/2 to 10/2 AC/MC/MCI-A/HCF/HCFMCI-A and 3/8" FMC cable to box or enclosure.

No tools required. Simply snap the connector onto the cable, squeeze the lever and set into the knockout. Patent Pending.



CATALOG #	TRADE SIZE
AMC-50QI	3/8"



NEW Steel E-Z Lock™ Quick Install Duplex Connectors

Used to connect duplex 14/2 to 10/2 AC/MC/MCI-A/HCF/HCFMCI-A and 3/8" FMC cable to box or enclosure. No tools required. Simply snap the connector onto the cable, squeeze the lever and set into the knockout. Patented.

File No. E25034

CATALOG #	TRADE SIZE
AMC-52QI	3/8"



QUICK INSTALL

Whipper-Snap® "U" Shaped Strap Connectors

For connecting 14/2 to 10/3 AC/MC or 3/8" steel or aluminum reduced wall flexible metal conduit to a box or enclosure. Zinc die cast. Patented.

File No. E25034

CATALOG #	TRADE SIZE
SG38MCI-A	3/8"



Whipper-Snap® Screw-in Connectors

For connecting flexible metal conduit to a box or enclosure. Screw connector into conduit and snap into electrical box. Patented.

File No. E25034

CATALOG #	TRADE SIZE
GF38SP	3/8"
GF50SP	1/2"



QUICK INSTALL

Whipper-Snap® "U" Shaped Strap Duplex Connectors

For connecting 14/2 to 10/3 AC/MC cable or 3/8" flexible metal conduit to a box or enclosure. Zinc die cast. Insulated throat. Patented.

File No. E25034

CATALOG #	TRADE SIZE
SG3838ASP	3/8"



QUICK INSTALL

SG38ASP



QUICK INSTALL

SG38SP

Whipper-Snap® "U" Shaped Strap Connectors

For connecting 14/4 to 10/3 AC/MC or 3/8" flexible metal conduit to a box or enclosure. Zinc die cast. Patented.

File No. E25034

CATALOG	TRADE SIZE
SG38SP	3/8"

Insulated Throat - 105°C

CATALOG	TRADE SIZE
SG38ASP	3/8"



Mighty-Hold™ Universal Straps

Steel or aluminum AC/MC/MCI-A cable .43" - .61" O.D

For steel or aluminum 3/8" FMC. .210 hole size. Supports multiple sizes. Patented.

File No. E161206

CATALOG #	TRADE SIZE
US-4461	3/8"



Zinc Die Cast Squeeze Connectors with Grounding Lug

To connect flexible metal conduit and AC cable to a box or enclosure. AC cable range .860" to .920".

Copper grounding lug range #14 to #6 AWG. For FMC use #1003 Anti-Short Bushing.

File No. E20412

CATALOG #	TRADE SIZE
407-DC2G	1/2"



Zinc Die Cast Set Screw Connectors

Used to connect AC/MC cable to box or enclosure.

File No. E20534

CATALOG #	TRADE SIZE
501-DC2	3/8"



Zinc Die Cast Single Screw, Strap Type Connectors

Used to connect armored or metal clad cable to a box or enclosure. Tri-Drive screws.

File No. E20534 File No. LR39354

CATALOG #	TRADE SIZE	RANGE	
		MIN	MAX
560-DC2	3/8"	.44	.61



Insulated Throat - 105°C

CATALOG #	TRADE SIZE	RANGE	
		MIN	MAX
560-DCI2	3/8"	.44	.61

560-DCI2



Whipper-Snap® Single Screw Strap Type Connector for MCI-A Cable

For connecting 14/2 (.38" Ø min) to 10/3 (.61" Ø max) steel or aluminum AC/MC cable or 3/8" steel or aluminum flexible metal conduit to a box or enclosure.

File No. E25034

CATALOG #	TRADE SIZE
560-MCIA2	3/8"



Zinc Die Cast Low Profile "U" Shaped Strap Connectors

Used to connect 14/2 to 10/3 armored or metal clad cable to a box or enclosure. Tri-Drive screws.

File No. E20534

570-DC2

CATALOG #	TRADE SIZE	RANGE	
		MIN	MAX
570-DC2	3/8"	.38	.61



Insulated Throat - 105°C

CATALOG #	TRADE SIZE	RANGE	
		MIN	MAX
570-DCI2	3/8"	.38	.61

570-DCI2



Zinc Die Cast HCF Cable Color Coded Connectors

Used to connect steel or aluminum 14/2 to 10/3 Health Care Facilities armored cable. Green color for all green cable. Patented.

File No. E25034

CATALOG #	TRADE SIZE	RANGE	
		MIN	MAX
570-GI	3/8"	.38	.61



Zinc Die Cast Fire Alarm Cable Color Coded Connectors

Suitable for use with 18/2 (.38" Ø min) to 12/4 (.61" Ø max) solid TFN or THHN, or 18/2 (.41" Ø min) to 12/4 (.61" Ø max) solid twisted pair red-colored fire alarm MC cable. Patented.

File No. E25034

CATALOG #	TRADE SIZE	RANGE	
		MIN	MAX
570-RI	3/8"	.38	.61



590-DC2

Zinc Die Cast Snap Type Connectors

For connecting 14/2 to 10/3 aluminum or steel AC/MC cable or 3/8" flexible metal conduit to a box or enclosure.

File No. E20534

CATALOG #	TRADE SIZE	RANGE	
		MIN	MAX
590-DC2	3/8"	.43	.61



590-DC12

Insulated Throat - 105°C

CATALOG #	TRADE SIZE	RANGE	
		MIN	MAX
590-DC12	3/8"	.38	.61

Polyolefin Coated Mighty-Seal® PVC Jacketed MC and TECK Cable Connectors

For connecting PVC Jacketed MC Cable or Teck cable to box or enclosure. Cor-Shield® Polyolefin coating provides a high level of protection and a much more environmentally friendly product than other coated materials. Polyolefin provides an extremely strong shield from a vast variety of corrosive chemicals. Listed for direct burial. Concrete Tight.



595-DC2C



895-DC2C

CATALOG #	TECK RANGE	RANGE	
		MIN	MAX
595-DC2C	14/2 - 12/2	12/2 - 10/3	
596-DC2C	14/3 - 10/3	10/4 - 8/3	
895-DC2C*	14/2 - 12/2	12/2 - 10/3	

* 90 Degree Version

Zinc Die Cast Duplex Connectors

For connecting 14/2 to 10/3 armored or metal clad cable to a box or enclosure.

File No. E20534 File No. LR39354

CATALOG #	TRADE SIZE	RANGE	
		MIN	MAX
601-DC2	3/8"	.375	.625



Zinc Die Cast Two Screw Strap Type Connectors

Used to connect aluminum or steel AC cable or flexible metal steel conduit to a box or enclosure.

File No. E20534

CATALOG #	TRADE SIZE	RANGE	
		MIN	MAX
653-DC2	1/2"	.675	.90



Zinc Die Cast Two Screw Strap Type Connectors

Used to connect metal clad cable to a box or enclosure.

File No. E20534: 682-DC

File No. E202876: 683-DC2 – 686-DC2, 683-DC12 – 686-DC12, 683-DCX2 – 689-DCX2

File No. E191676: 687-DC2 – 689-DC2



683-DC2

Round Opening

CATALOG #	TRADE SIZE	RANGE	
		MIN	MAX
682-DC2	1/2"	0.575	0.875
683-DC2	1"	0.875	1.040
684-DC2	1 1/4"	1.100	1.250
685-DC2	1 1/2"	1.250	1.500
686-DC2	2"	1.750	2.000
687-DC2	2 1/2"	2.000	2.500
688-DC2	3"	2.375	3.000
689-DC2	3 1/2"	2.750	3.500



683-DC12

Round Opening Insulated Throat - 105°C

CATALOG #	TRADE SIZE	RANGE	
		MIN	MAX
683-DC12	1"	0.750	1.040
684-DC12	1 1/4"	1.100	1.250
685-DC12	1 1/2"	1.250	1.500
686-DC12	2"	1.750	2.000
687-DC12	2 1/2"	2.000	2.500
688-DC12	3"	2.375	3.000
689-DC12	3 1/2"	2.750	3.500



683-DCX2

Rectangular Opening

CATALOG #	TRADE SIZE	RANGE	
		MIN	MAX
683-DCX2	1"	0.875	1.040
684-DCX2	1 1/4"	1.100	1.250
685-DCX2	1 1/2"	1.250	1.500
686-DCX2	2"	1.500	1.850
687-DCX2	2 1/2"	2.000	2.500
688-DCX2	3"	2.375	3.000
689-DCX2	3 1/2"	2.750	3.500



Zinc Die Cast 90° Connectors

90° connectors with cover used for connecting armored or metal cable to a box or enclosure.

- File No. E9391: 801-DC2, 801-DC12
- File No. E20534: 804-DC2, 806-DC2, 807-DC2, 808-DC2, 804-DC12, 806-DC12, 807-DC12 & 808-DC12
- File No. LR39354

CATALOG #	TRADE SIZE	METAL CLAD CABLE RANGE	
		MIN	MAX
801-DC2	3/8"	0.450	0.625
804-DC2	1/2"	0.750	0.875
806-DC2	3/4"	0.875	1.000
807-DC2	1"	1.187	1.312
808-DC2	1 1/4"	1.500	1.625

Insulated Throat - 105°C

CATALOG #	TRADE SIZE	METAL CLAD CABLE RANGE	
		MIN	MAX
801-DC12	3/8"	0.450	0.625
804-DC12	1/2"	0.750	0.875
806-DC12	3/4"	0.875	1.000
807-DC12	1"	1.187	1.312
808-DC12	1 1/4"	1.500	1.625



Whipper-Snap® Two Screw Strap Type Connector

For connecting 14/2 (.44" Ø min) to 10/3 (.61" Ø max) steel or aluminum AC/MC cable. Zinc die cast. Patented.

- File No. E20534

CATALOG #	TRADE SIZE
840SP	3/8"



Whipper-Snap® Duplex Connectors

The 846SP is a strap type fitting with external spring steel locking tabs that allow the connector to simply snap into the electrical box. Use the 846SP with 14/2 (.38" Ø min) to 10/4 (.625" Ø max). Zinc die cast. Patented.

- File No. E20534

CATALOG #	TRADE SIZE
846SP	3/8"



Whipper-Snap® 90° Connectors Double-Screw Design

Used for connecting 12/2 (.55" Ø min) to 10/3 (.61" Ø max) AC/MC cable to a box or enclosure. Zinc die cast. Patented.

- File No. E25034

CATALOG #	TRADE SIZE
850SP	3/8"



One Hole FMC and AC/MC Straps

Snap-on strap used to support metal clad cable. Steel.

- File No. E161206

CATALOG #	FMC TRADE SIZE	CABLE SIZE	AC/MC RANGE	
			MIN	MAX
890-MC	—	14/2, 12/2	0.475	0.525
891-MC	—	14/3, 12/3	0.540	0.590
900-F	3/8"	12/4, 10/2, 10/3	.560	.610

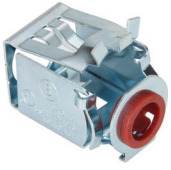


AC/MC Cable Brackets

Positions AC or MC cables. Galvanized steel construction. Convenient slot and hole for attaching to stud with nails or screws.

- File No. E161206

CATALOG #	AC/MC RANGE CABLE SIZE
895-MC	Max of (4) 14/2, 14/3, 14/4, 12/2 or 12/3

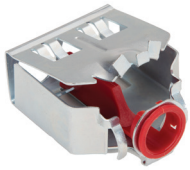


NEW Steel E-Z Lock™ Quick Install Connectors

Used to connect 14/2 to 10/2 AC/MC/MCI-A/HCF/HCFMCI-A and 3/8" FMC cable to box or enclosure. No tools required. Simply snap the connector onto the cable, squeeze the lever and set into the knockout. Patent Pending.



CATALOG #	TRADE SIZE
AMC-50QI	3/8"



NEW Steel E-Z Lock™ Quick Install Duplex Connectors

Used to connect duplex 14/2 to 10/2 AC/MC/MCI-A/HCF/HCFMCI-A and 3/8" FMC cable to box or enclosure. No tools required. Simply snap the connector onto the cable, squeeze the lever and set into the knockout. Patented.



CATALOG #	TRADE SIZE
AMC-50QI	3/8"



SG38ASP

SG38SP

Whipper-Snap® "U" Shaped Strap Connectors

For connecting 14/4 (.43" Ø min) to 10/3 (.61" Ø max) AC/MC cable or 3/8" flexible metal conduit to a box or enclosure. Zinc die cast. Patented.

File No. E25034

Insulated Throat - 105°C

CATALOG #	TRADE SIZE
SG38ASP	3/8"
SG38SP	3/8"



Whipper-Snap® "U" Shaped Strap Duplex Connectors

For connecting 14/2 (.42" Ø min) to 10/3 (.61" Ø max) AC/MC cable or 3/8" flexible metal conduit to a box or enclosure. Zinc die cast. Patented.

File No. E25034

CATALOG #	TRADE SIZE
SG3838ASP	3/8"



Mighty-Hold™ Universal Straps

The US-4461 is for steel or aluminum AC/MC/MCI-A cable .43" - .61" O.D. For steel or aluminum 3/8" FMC.

The US-6171 is for steel or aluminum AC/MC/MCI-A cable .617" to .71" O.D.

.210 hole size. Supports multiple sizes. Patented.

File No. E161206

CATALOG #	TRADE SIZE	AC/MC RANGE	
		MIN	MAX
US-4461	3/8"	.43	.61
US-6171	-	.617	.71



Mighty-Hold™ Universal Straps

For PVC jacketed steel MCI-A cable .55" - .71" O.D. .210 hole size. Suitable for use in wet locations. Supports multiple sizes. Stainless Steel. Patented.

File No. E161206

CATALOG #	CABLE SIZE	AC/MC RANGE	
		MIN	MAX
USS-6171	12/2, 10/3	.55	.71



Whipper-Snap® "U" Shaped Strap Connector for MCI-A Cable

For connecting 14/2 (.38" Ø min) to 10/3 (.56" Ø max) steel or aluminum reduced wall flexible metal conduit to a box or enclosure. Zinc die cast. Patented.

File No. E25034

CATALOG #	TRADE SIZE
SG38MCIA	3/8"



ALI Series



CLI Series

Solderless Lugs

Copper lugs are used with copper conductors and provide high conductivity with lower heat rise. Copper lugs are rated for direct burial. Aluminum lay-in lugs are suitable for use with copper or aluminum conductors.

File No. E155561

Aluminum

CATALOG #	WIRE CAPACITY
ALI-50	4 – 14
ALI-112	1/0 – 14
ALI-252	250 MCM - 6

Copper

CATALOG #	WIRE CAPACITY
CLI-10	4 – 14
CLI-20	4 – 14



Aluminum Solar Panel Grounding Connector

Designed to prevent galvanic reactions and enhance conductivity. The connector body has extruded serrations for breaking the anodized finish on photovoltaic modules and frames.

The serrations in the wire binding break corrosion on the grounding wire, which means that no surface preparation is required for the PV module, the frame or the ground wire.

The unique clamp-on design means no mounting holes are required. The connector simply clamps onto the frame of the solar panel. The unit is UL 467 Listed and accommodates aluminum or copper #4 to 14 AWG. The connectors feature stainless steel hardware.

File No. E20412

CATALOG #	AWG WIRE CAPACITY
ALI-SLR	4 - 14



Bonding Jumper Assembly

Use Bonding Jumper Assembly to comply with Article 250 of the National Electrical Code. Suitable for use on EMT, rigid conduit, or copper water pipe. If used with expansion coupling: assemble ground clamp to conduit 1" from stationary end of coupling.

Attach second ground clamp 2" from sliding end of expansion coupling. NOTE: Total movement is 4". Assembly features bronze ground clamps and copper bonding strip.

File No. E20412

CATALOG #	CONDUIT TRADE SIZE
BJ-100	1/2" – 1"
BJ-200	1 1/4" – 2"
BJ-400	2 1/2" – 4"



Zinc Die Cast Duplex Connectors

Strap type fitting used to connect 14/2 to 10/3 nonmetallic cable to a box or enclosure.

UL File No. E20534 SP File No. LR39354

CATALOG #	K.O. SIZE
601-DC2	1/2"



Knockout Insulating Bushings

Converts metallic box rough edge holes to smooth insulated holes for protection of electrical, voice, data and video cables. Plastic rated at 105°C.

UL File No. E240912 SP File No. LR24719

CATALOG #	K.O. SIZE	K.O. DIAMETER
9791	1/2"	0.875
9792	3/4"	1.109
9793	1"	1.375
9794	1 1/4"	1.734
9795	1 1/2"	1.984
9796	2"	2.469



616-NMD



617-NMD

PVC "Snap-In" Type Connectors

For connecting nonmetallic cable to a box or enclosure. Locknut not required.

UL File No. E11698

CATALOG #	K.O. SIZE	NONMETALLIC CABLE RANGE
616-NMD	1/2"	One 14/2 - 6/2 Two 14/2 - 12/3 In any combination
617-NMD	3/4"	One 8/2, 8/3, 6/2, 6/3

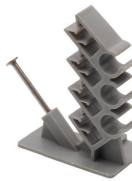


PVC "Snap-In" Type Connectors

For connecting nonmetallic cable to a box or enclosure. Locknut not required.

UL File No. E11698 SP File No. LR74878

CATALOG #	K.O. SIZE	NONMETALLIC CABLE RANGE	
		MIN	MAX
620-NM	1/2"	14/2	10/3
		OR TWO	
621-NM	3/4"	14/2	12/2
		8/3	6/3
		OR TWO	
		12/3	8/3

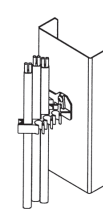


NMWH-43 Cable Stacker

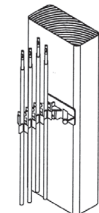
For use on steel or wood studs to support non-metallic sheath, communication and data cables. Furnished with nail for wood stud.

Use #8 x 1/2" self-tapping sheet metal screw for steel stud. Complies with NEC Articles 300-4(D) and 320.23(B). Polypropylene. Patented.

UL US File No. E161206



Metal Stud



Wood Stud

CATALOG #
NMWH-43

Cable Ranges

DATA/COMMUNICATION CABLE		
Oval Openings	1 or 2	.06" to .20" diameter
Oval Openings	1	.20" to .32" diameter

Round Openings	1	.16" to .50" diameter
----------------	---	-----------------------

NONMETALLIC SHEATH CABLE

Oval Openings	1 or 2	14/2 AWG
---------------	--------	----------

Oval Openings	1 or 2	12/2 AWG
---------------	--------	----------

Oval Openings	1	10/2 AWG
---------------	---	----------

Round Openings	1	14/3 AWG
----------------	---	----------

Round Openings	1	12/3 AWG
----------------	---	----------

Round Openings	1	10/3 AWG
----------------	---	----------



Steel Two-Piece Clamp Type Connectors

For connecting nonmetallic cable to a box or enclosure. Locknut not required.

UL File No. E11698: 642 – 644

CATALOG #	K.O. SIZE	NONMETALLIC CABLE RANGE	
		MIN	MAX
642	1/2"	0.180	0.560
643	3/4"	0.250	0.830
644	1 1/4"	0.250	0.980
645	1 1/2"	0.312	1.125

Zinc Die Cast Two Screw, Strap Type Connectors

For connecting nonmetallic cable to a box or enclosure. Can be used with one or two 14/2 or 12/2 NM-B cables or one 14/2 through 10/3 NM-B cable. Also listed for 18/3 to 12/3 SJO cord.

UL File No. E11698: 650-DC2 UL File No. E15123: 670-DC2

SP File No. LR39354

CATALOG #	K.O. SIZE
650-DC2	1/2"



Steel Jack Chain

Supports fixtures. Maximum safe load is 25 lbs.

CATALOG #	SIZE	DESCRIPTION
701	#12	100' Spool
703	#12	300' Bucket

Steel "S" Hooks

Supports fixtures. Maximum safe load is 25 lbs.



CATALOG #	TRADE SIZE
705	1 1/4"

Steel 722 Switch Box Supports

To support switch boxes in wallboard. Installed in pairs.



CATALOG #
722

One Hole Service Entrance Straps

To support oval service entrance cable, types SE and SEU, to a mounting surface. Zinc plated steel.



CATALOG #	SE/SEU RANGE CABLE SIZE
881-SE	#3, #8, #6, #4
882-SE	#3, #3, #2
883-SE	#3, #1, #0, #1/0, #2/0
884-SE	#3/0, #4/0

Steel One Hole Straps

Snap-on strap used to support flexible metal conduit, armored cable or metal clad cable.



File No. E161206

CATALOG #	FMC TRADE SIZE	CABLE SIZE	AC/MC RANGE	
			MIN	MAX
890-MC	—	14/2, 12/2	0.475	0.525
891-MC	—	14/3, 12/3	0.540	0.590
900-F	3/8"	12/4, 10/2, 10/3	.560	.610



Steel AC/MC Cable Bracket

Positions AC or MC cables. Galvanized steel construction. Convenient slot and hole for attaching to stud with nails or screws.

File No. E161206

CATALOG #	AC/MC RANGE CABLE RANGE
895-MC	Max of (4) 14/2, 14/3, 14/4, 12/2 or 12/3

One Hole Rigid Pipe Straps

To support rigid conduit and IMC to a mounting surface. Zinc plated steel.

File No. E161206: 904-S — 908-S & 910-S

File No. LR39354

CATALOG #	TRADE SIZE
901-S	1/2"
902-S	3/4"
903-S	1"
904-S	1 1/4"
905-S	1 1/2"
906-S	2"
907-S	2 1/2"
908-S	3"
909-S	3 1/2"
910-S	4"

Rigid Nail Straps

Used to support rigid conduit and IMC to wood. Zinc plated steel.



CATALOG #	TRADE SIZE
901-NS	1/2"
902-NS	3/4"
903-NS	1"

EMT Nail Straps

Nail type strap to support EMT to a mounting surface. Zinc plated steel.



CATALOG #	TRADE SIZE
920-NS	1/2"
921-NS	3/4"
922-NS	1"



One Hole EMT Straps

To support EMT to a mounting surface. Zinc plated steel.

File No. E161206: 924-S & 925-S

File No. LR39354

CATALOG #	TRADE SIZE
920-S	1/2"
921-S	3/4"
922-S	1"
923-S	1 1/4"
924-S	1 1/2"
925-S	2"



Two Hole Rigid Pipe Straps

Used to support rigid conduit and IMC to a mounting surface. Zinc plated steel.

File No. E161206: 1907 – 1910

File No. LR39354

CATALOG #	TRADE SIZE
1901	1/2"
1902	3/4"
1903	1"
1904	1 1/4"
1905	1 1/2"
1906	2"
1907	2 1/2"
1908	3"
1909	3 1/2"
1910	4"



Aluminum - Service Entrance Cable One Hole Straps

Used to support oval service entrance cable to a mounting service.

File No. E30211709

CATALOG #	SE/SEU RANGE CABLE SIZE
933	3 - #2 to #3
936	3 - 3/0 to #4/0



Two Hole EMT Pipe Straps

To support EMT to a mounting surface. Zinc plated steel.

File No. E161206: 1907 – 1910

File No. LR39354: 1920 – 1925

CATALOG #	TRADE SIZE
1920	1/2"
1921	3/4"
1922	1"
1923	1 1/4"
1924	1 1/2"
1925	2"



Two Hole Service Entrance Straps

To support oval service entrance cable, types SE and SEU, to a mounting surface. Zinc plated steel.

CATALOG #	SE/SEU CABLE SIZE
1881-SE	3 - #8, #6, #4
1882-SE	3 - #3, #2
1883-SE	3 - #1, #0, #1/0, #2/0
1884-SE	3 - #3/0, #4/0



Conduit Hangers

To secure EMT or rigid conduit to a threaded rod, insulator supports or directly to a mounting surface.

2100-BN – 2140-BN come with a carriage bolt and nut. The 2100 thru 2140 have a 2-way slotted/Phillips bolt with integral threads. Zinc plated steel.

File No. E161206

With Bolt

CATALOG #	TRADE SIZE	RIGID	EMT
2100	0	3/8" & 1/2"	1/2"
2110	1	3/4"	3/4"
2120	2	1"	1"
2125	2 1/2	—	1 1/4"
2130	3	1 1/4"	1 1/2"
2140	4	1 1/2"	—

With Bolt and Nut

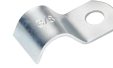
CATALOG #	TRADE SIZE	RIGID	EMT
2100-BN	0	3/8" & 1/2"	1/2"
2110-BN	1	3/4"	3/4"
2120-BN	2	1"	1"
2125-BN	2 1/2	—	1 1/4"
2130-BN	3	1 1/4"	1 1/2"
2140-BN	4	1 1/2"	—



Conduit Hangers with Bolt and Nut

To secure EMT or rigid conduit to a threaded rod, insulator supports or directly to a mounting surface. Zinc plated 304 stainless steel.

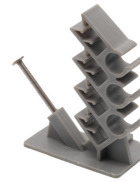
CATALOG #	TRADE SIZE	RIGID	EMT
2100-S	0	3/8" & 1/2"	1/2"
2110-S	1	3/4"	3/4"
2120-S	2	1"	1"
2125-S	2 1/2	—	1 1/4"
2130-S	3	1 1/4"	1 1/2"
2140-S	4	1 1/2"	—
2150-S	5	2"	2"
2160-S	6	2 1/2"	2 1/2"
2170-S	7	3"	3"
2180-S	8	3 1/2"	3 1/2"
2190-S	9	4"	4"



Tubing and Coaxial Straps

Used to support tubing and coaxial cable to a mounting surface. Zinc plated steel.

CATALOG #	TRADE SIZE
CC-25	1/4"
CC-31	5/16"
CC-37	3/8"

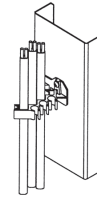


NMWH-43 Cable Stacker

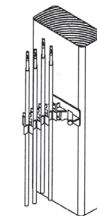
For use on steel or wood studs to support nonmetallic sheath, communication and data cables. Furnished with nail for wood stud.

Use #8 x 1/2" self-tapping sheet metal screw for steel stud. Complies with NEC Articles 300-4(D) and 320.23(B). Polypropylene. Patented.

File No. E161206



Metal Stud



Wood Stud

CATALOG #
NMWH-43

Cable Ranges

DATA/COMMUNICATION CABLE			
Oval Openings	1 or 2	.06" to 20" diameter	
Oval Openings	1	20" to 32" diameter	
Round Openings	1	.16" to .50" diameter	
NONMETALLIC SHEATH CABLE			
Oval Openings	1 or 2	14/2 AWG	
Oval Openings	1 or 2	12/2 AWG	
Oval Openings	1	10/2 AWG	
Round Openings	1	14/3 AWG	
Round Openings	1	12/3 AWG	
Round Openings	1	10/3 AWG	





Polyolefin Coated Steel Mighty-Hold™ Universal Clamp Straps

One piece clamp back and strap secures both cable and conduit. Secures EMT, Rigid, IMC, Metallic Liquid Tight, Nonmetallic Liquid Tight, FMC and Schedule 40 and Schedule 80 PVC conduit, as well as steel and aluminum AC/MC Cable.

Cor-Shield® Polyolefin coating provides a high level of protection and a much more environmentally friendly product than other coated materials. Polyolefin provides an extremely strong shield from a vast variety of corrosive chemicals. Patent Pending.



CATALOG #	TRADE SIZE
UCSC-5075	1/2" - 3/4"
UCSC-75100	3/4" - 1"
UCSC100125	1" - 1 1/4"
UCSC125150	1 1/4" - 1 1/2"
UCSC150200	1 1/2" - 2"

Mighty-Hold™ Universal Straps



For steel or aluminum AC/MC/MCI-A cable. .210 hole size. Supports multiple sizes. Patented.

File No. E161206

CATALOG #	CABLE SIZE	AC/MC RANGE	
		MIN	MAX
US-4461	14/2, 10/3	.43	.61
US-6171	10/4, 8/3	.617	.71

Mighty-Hold™ Universal Straps



For PVC jacketed steel MCI-A cable .55" - .71" O.D. .210 hole size. Suitable for use in wet locations. Supports multiple sizes. Stainless Steel. Patented.

File No. E161206

CATALOG #	CABLE SIZE	AC/MC RANGE	
		MIN	MAX
USS-6171	12/2, 10/3	.55	.71



NEW Zinc Die Cast Grounding Hubs

Used to secure threaded rigid service entrance conduit to box or enclosure. The locknut has an attached lug that allow for installation of a ground wire. Listed for use in wet locations.



CATALOG #	K.O. SIZE	LUG SIZE
166-DCG	2"	14 to 1/0
167-DCG	2 1/2"	14 to 1/0
168-DCG	3"	14 to 1/0
169-DCG	3 1/2"	6 to 3/0
170-DCG	4"	6 to 3/0



Zinc Die Cast Two Screw, Strap Type Connectors

For connecting oval service cable to a box or enclosure.



File No. E15123



File No. LR39354

CATALOG #	K.O. SIZE	OVAL SERVICE CABLE SIZE	
		HEIGHT	WEIGHT
670-DC2	3/4"	0.437	0.625



Zinc Die Cast UF Connectors

Provides watertight seal around underground feeder cable. Tapered NPT threads.



File No. E11698

CATALOG #	TRADE SIZE	CABLE SIZE
761-UF	1/2"	14/2, 12/2, 10/2 (.250 x .500)
762-UF	3/4"	14/3, 12/3, 10/3 (.260 x .720)



Zinc Die Cast Watertight Service Entrance Cable Connectors

Compression type connectors provide a watertight seal around service entrance cable.

CATALOG #	K.O. SIZE	GROMMET OPENING SIZE
765-2	1 1/2"	.865 x 1.325
765-3	1 1/2"	.875 x 1.375
766-2	2"	.860 x 1.340
766-3	2"	.870 x 1.370
766-4	2"	.900 x 1.500
766-4N	2"	1.100 x 1.750



881-SE thru 884-SE

One Hole Service Entrance Straps

To support oval service entrance cable, types SE and SEU, to a mounting surface. Zinc plated steel.

CATALOG #	SE/SEU RANGE CABLE SIZE
881-SE	#3, #8, #6, #4
882-SE	#3, #3, #2
883-SE	#3, #1, #0, #1/0, #2/0
884-SE	#3/0, #4/0



Aluminum One Hole Service Entrance Straps

Used to support oval service entrance cable to a mounting service.



File No. E30211709

CATALOG #	SE/SEU RANGE CABLE SIZE
933	3 - #2 to #3
936	3 - 3/0 to #4/0



Sill Plates

When used with sealing compound, sill plates prevent water from entering the structure.

Aluminum With Screws and Sealing Compound

CATALOG #	SE/SEU RANGE CABLE SIZE
938-C	3 - #2

PVC Without Screws and Sealing Compound

CATALOG #	SE/SEU RANGE CABLE SIZE
938-PVC	3 - #4 to 3-#0



PVC Entrance Caps For Oval Service Entrance Cable

Electrical grade rigid PVC entrance cap with galvanized steel mounting bracket and strap for use with oval service entrance cable.



File No. E15123

CATALOG #	OVAL SERVICE CABLE SIZE
1240-PVC	2 - 8, 6, 4, 2
1241-PVC	2 - 1/0, 2/0
1242-PVC	2 - 3/0, 4/0





PVC Entrance Heads

PVC entrance head for mounting on PVC, rigid, IMC or EMT. Removable EMT adapter sleeve and no-turn square nut allow for fast installation.

UL File No. E9391 SF File No. LR74878

CATALOG #	TRADE SIZE
1251-PVC	1/2"
1252-PVC	3/4"
1253-PVC	1"
1254-PVC	1 1/4"
1255-PVC	1 1/2"
1256-PVC	2"



Two Hole Service Entrance Straps

To support oval service entrance cable, types SE and SEU, to a mounting surface. Zinc plated steel.

CATALOG #	SE/SEU CABLE SIZE
1881-SE	3 - #8, #6, #4
1882-SE	3 - #3, #2
1883-SE	3 - #1, #0, #1/0, #2/0
1884-SE	3 - #3/0, #4/0



Mast Kits

Service entrance mast kits provide an assortment of mast components for installing overhead service drops. Use for both residential and commercial buildings that utilize conduit.

CATALOG #	DESCRIPTION CONTENTS
MK-10020	<p>2" Service Entrance Kit (125-150-200 AMP)</p> <ul style="list-style-type: none"> · Service Head (Cat 1256) · Roof Flashing (Cat RF-200) · Porcelain Wire Holder (Cat MWH-1) · 2" Rigid Pipe Strap (2 pcs.) (Cat 1906)
MK-20025	<p>2-1/2" Service Entrance Kit (125-150-200 Amp)</p> <ul style="list-style-type: none"> · Service Head (Cat 1257-MT) · Roof Flashing (Cat RF-250) · Conduit Support (2 pcs) · Porcelain Wire Holder (Cat MWH-1)
MK-20025R	<p>2-1/2" Service Entrance Kit (125-150-200 Amp)</p> <ul style="list-style-type: none"> · Service Head (Cat 1257-MT) · Porcelain Wire Holder (Cat MWH-1) · Roof Flashing (Cat RF-250) · Conduit Support (2 pcs) · Bottom Reducer



RF125 — RF250

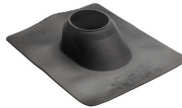
Roof Flashings

Galvanized units for use with galvanized, plastic or cast iron electrical service masts. Fits flats to 40°.

Neoprene units for use with copper, cast iron, galvanized or plastic pipe. Fits flats up to 45° angle. Not recommended for hot-mopped or built-up roofs.

Galvanized

CATALOG #	TRADE SIZE
RF-125	1 1/4"
RF-150	1 1/2"
RF-200	2"
RF-250	2 1/2"



RFN-125 — RFN-400

Neoprene

CATALOG #	TRADE SIZE
RFN-125	1 1/4" - 1 1/2"
RFN-200	2"
RFN-250	2 1/2"
RFN-300	3"
RFN-400	4"




Service Entrance Kits

Service entrance kits provide an assortment of components for electrical service installation.

CATALOG #	DESCRIPTION
SE-KIT100	100 Amp SE Cable Kit
SE-KIT200	200 Amp SE Cable Kit

Bridle Rings

Steel bridle rings provide support for voice, data or video cables. Open loop end allows for easy insertion of cables. Machine thread style has 1/4-20 thread for use with beam clamps or other clamping devices. Wood style rings are threaded for easy assembly into 1/8" diameter pre-drilled holes. Zinc plated steel.

 File No. E161206: BRI-150, BRI-200, BRWI-150 & BRWI-200



BR

Threaded Bridle Rings

CATALOG #	TRADE SIZE
BR-150	1 1/2"
BR-200	2"
BR-400	4"



BRI

Threaded Bridle Rings/Plastic Insulator

CATALOG #	TRADE SIZE
BRI-150	1 1/2"
BRI-200	2"



BRW

Threaded Bridle Rings for Wood

CATALOG #	TRADE SIZE
BRW-150	1 1/2"
BRW-200	2"



BRWI

Threaded Bridle Rings for Wood/Plastic Insulator

CATALOG #	TRADE SIZE
BRWI-150	1 1/2"
BRWI-200	2"



Box Connectors

Used as a raceway between two boxes.

 File No. E11259  File No. LR39354

CATALOG #	TRADE SIZE
1191-DC2	1/2"



Knockout Insulating Bushings

Converts metallic box rough edge holes to smooth insulated holes for protection of electrical, voice, data and video cables. Plastic rated at 105°C.

 File No. E240912  File No. LR24719

CATALOG #	K.O. SIZE	K.O. DIAMETER
9791	1/2"	0.875
9792	3/4"	1.109
9793	1"	1.375
9794	1 1/4"	1.734
9795	1 1/2"	1.984
9796	2"	2.469





Zinc Plated Steel Tubing and Coaxial Straps

Used to support tubing and coaxial cable to a mounting surface.

CATALOG #	TRADE SIZE
CC-25	1/4"
CC-31	5/16"
CC-37	3/8"



Communications/Data Plate Mounting Bracket for Old Work

Eliminates the need for an outlet box. Provides a mounting base for securing communication or data line face plates. Mounts standard low voltage outlets and plates (Class 2 only). Hardware included.

CATALOG #	MATERIAL
LVB-1	Zinc Plated Steel



Steel Jack Chain

Supports fixtures. Maximum safe load is 25 lbs.

CATALOG #	SIZE	DESCRIPTION
701	#12	100' Spool
703	#12	300' Bucket



Plastic Knockout Plugs

To cap unused knockout holes in a box or enclosure. Plastic.

CATALOG #	TRADE SIZE
9893	1"
9894	1 1/4"
9895	1 1/2"
9896	2"



Box Supports

Supports FS boxes, outdoor lighting fixtures or similar devices per NEC Article 370-23 requirements. Tapered NPT threads provide a raintight seal. Simply assemble the box support onto the box or fixture and fasten to steel rigid conduit or water pipe driven into the ground.

File No. E161206: BS-050

CATALOG #	TRADE SIZE
BS-050	1/2"
BS-075	3/4"

Duct Seal

Used to seal around boxes, flashings and service entries. #1003 asbestos-free sealing compound is pliable, noncorrosive to metals and can be painted. For both indoor and outdoor use.

File No. R14730



CATALOG #	SLUG SIZE
DS-100	1 lb.
DS-500	5 lb.



"S" Hooks

Supports fixtures. Maximum safe load is 25 lbs.

CATALOG #	TRADE SIZE
705	1 1/4"



Galvanized Steel Safety Plates

Protects cable running through wooden studs from nails and screws.

File No. E161206

CATALOG #
732-SP



Steel Expansion Couplings for EMT Conduit

Low cost and easy to use. Assembles like a regular set screw coupling. Use to compensate for plus or minus 2" lateral movement of conduit in dry locations. May be used with optional Bonding Jumper assembly (Cat. Nos. BJ-100, BJ-200 and BJ-400).

See Grounding Section. Patented.

 File No. E24001: EC-075 – EC-200

 File No. E9391: EC-250 – EC-400

CATALOG #	TRADE SIZE
EC-075	3/4"
EC-100	1"
EC-125	1 1/4"
EC-150	1 1/2"
EC-200	2"
EC-250	2 1/2"
EC-300	3"
EC-350	3 1/2"
EC-400	4"



Firestop

A water-based, noncorrosive, nontoxic, odorless quality intumescent. The FS-1000 is rated 3000°F for 8 hours. Adheres to most construction materials including ceramics, composites, masonry, metal, plastic and wood. Can be safely removed with soap and water prior to curing. Paintable and sandable. Classified by UL as a noncombustible product in compliance with zero flame and zero smoke index.

 File No. R25422

CATALOG #	CARTRIDGE SIZE
FS-1000	10.5 fluid ounces



Steel Expansion Couplings for Rigid Conduit

Low cost and easy to use. Assembles like a regular set screw coupling. Use to compensate for plus or minus 2" lateral movement of conduit in dry locations. May be used with optional Bonding Jumper assembly (Cat. Nos. BJ-100, BJ-200 and BJ-400).

See Grounding Section. Patented.

 File No. E24001: EC-075 – EC-200

 File No. E9391: EC-250 – EC-400

CATALOG #	TRADE SIZE
EC-075R	3/4"
EC-100R	1"
EC-125R	1 1/4"
EC-150R	1 1/2"
EC-200R	2"
EC-250	2 1/2"
EC-300	3"
EC-350	3 1/2"
EC-400	4"



BPTFITTINGS.COM

CALL

203.377.5944

FAX

203.381.3488

EMAIL

SALES@BPFITTINGS.COM

DISTRIBUTED BY:

