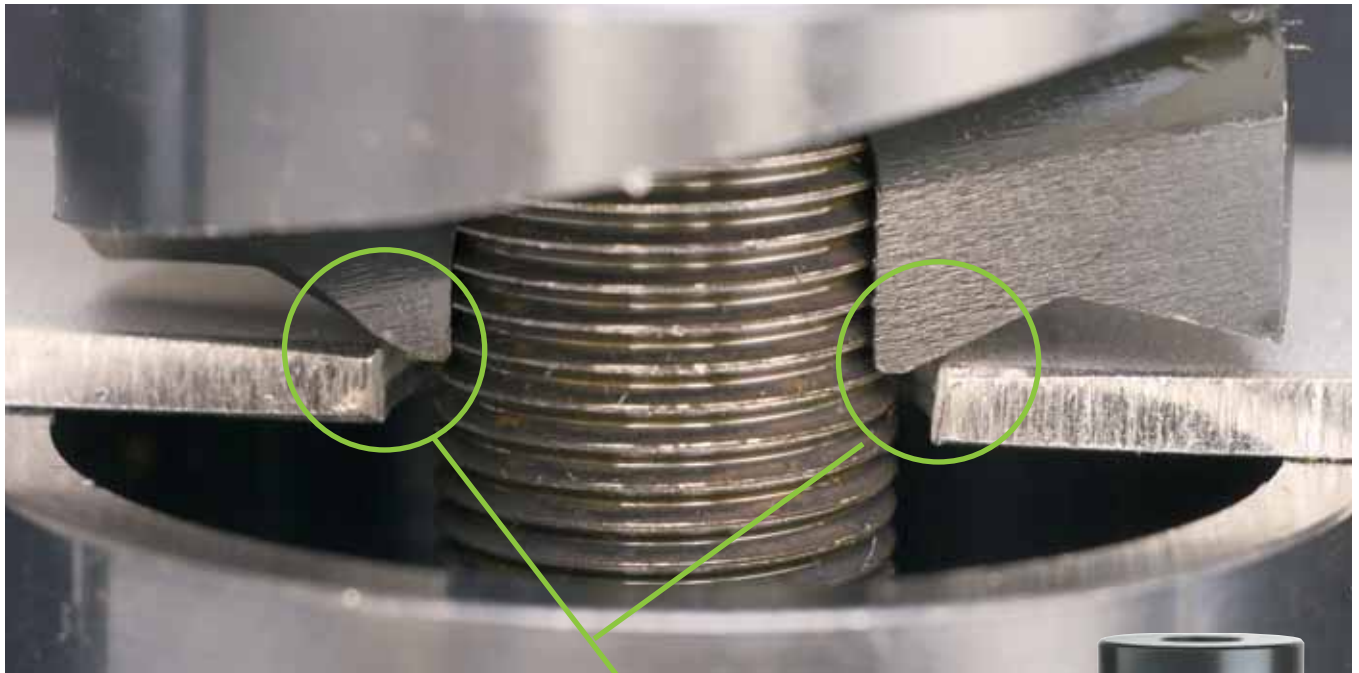


BULL'S EYE!



Chamfer self centers on pilot hole for perfect alignment every time.

SLUG-BUSTER SC[™]



You'll hit the mark every time with the Greenlee Slug-Buster SC[™]

Do a quality job in less time and with less potential for errors or alignment problems in mild steel— with the new Greenlee Slug-Buster SC[™] knockout.

What's different? A unique, patent-pending self-centering feature that makes centering the punch on a pilot hole faster and easier, reducing rework and scrap. Just tighten

down the punch on your draw stud and let our new punch center itself on the pilot hole. No more trying to line up the die alignment marks or drawing crosshairs on the box to ensure alignment. The Slug-Buster SC[™] is the fastest, easiest tool for punching holes that are perfectly on center with a pilot hole, reducing layout time, rework and scrap.

PRODUCT FEATURES

- **Save time and ensure accuracy!** Self-centering punch aligns itself on pilot hole.
- **No need to draw crosshairs** or line up die alignment marks.
- Unique, patent-pending punch profile also splits slugs for easier slug removal.



ORDERING INFORMATION

PUNCH UNIT		CONDUIT & PIPE SIZE	HOLE SIZE		MILD STEEL		WGT.		PUNCH		REPLACEMENT DIE		REPLACEMENT DRAW STUD		
CAT. NO.	UPC NO.		INCH	mm	GA.	mm	LBS.	g	CAT. NO.	UPC NO.	CAT. NO.	UPC NO.	CAT. NO.	UPC NO.	
77U-1/2	10801	1/2"	7/8	.885	22.2	10	3.5	.3	137	77P-1/2	11361	14722	14722	00042	00042
◆		1/2"	7/8	.885	22.2	10	3.5	—	—	77P-1/2P◆	11261	14722P◆	01992	00042	00042
77U-3/4	10802	3/4"	—	1.115	28.3	10	3.5	.8	363	77P-3/4	11362	124AV	06972	294AVBB	04040
◆		3/4"	—	1.115	28.3	10	3.5	—	—	77P-3/4P◆	11262	124AVP◆	01993	294AVBBP◆	01987
77U-1	10803	1"	—	1.362	34.6	10	3.5	1	454	77P-1	11363	126AV	04011	294AVBB	04040
◆		1"	—	1.362	34.6	10	3.5	—	—	77P-1P◆	11263	126AVP◆	01994	294AVBBP◆	01987
10807◆	10807	—	1-7/32	1.21	30.5	10	3.5	.9	408	11357	11357	3627B	3627B	294AVBB	04040
77U-1-1/4	10804	1-1/4"	—	1.701	43.2	10	3.5	1.3	590	77P-1-1/4	11364	128AV	04013	294AVBB	04040
◆		1-1/4"	—	1.701	43.2	10	3.5	—	—	77P-1-1/4P◆	11264	128AVP◆	01995	294AVBBP◆	01987
77U-1-1/2	10805	1-1/2"	—	1.951	49.6	10	3.5	2.1	953	77P-1-1/2	11365	440AV	04061	304AVBB	04042
◆		1-1/2"	—	1.951	49.6	10	3.5	—	—	77P-1-1/2P◆	11265	440AVP◆	01996	304AVBBP◆	01988
77U-2	10806	2"	2-3/8	2.416	61.4	10	3.5	2.3	1043	77P-2	11366	442AV	04063	304AVBB	04042
◆		2"	2-3/8	2.416	61.4	10	3.5	—	—	77P-2P◆	11266	442AVP◆	01997	304AVBBP◆	01988
10800	10800	1/2"-2" kit													

◆ **POP Packaged**

DISTRIBUTED BY



GREENLEE®
A Textron Company

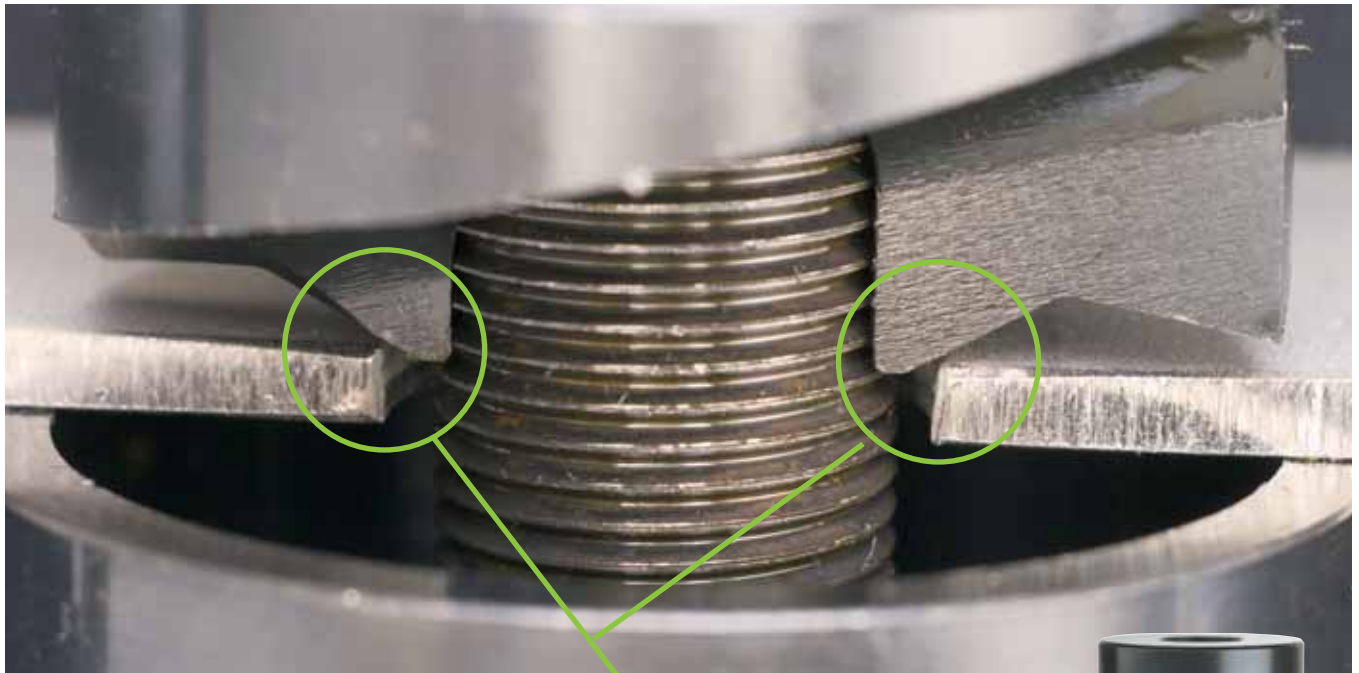
USA 800-435-0786 Fax: 800-451-2632
815-397-7070 Fax: 815-397-1865
Canada 800-435-0786 Fax: 800-524-2853
International +1-815-397-7070 Fax: +1-815-397-9247

4455 Boeing Drive • Rockford, IL 61109-2988 • USA • 815-397-7070
©2004 Greenlee Textron Inc. • An ISO 9001 Company • Printed in USA
Greenlee Textron Inc. is a subsidiary of Textron Inc.

www.greenlee.com

MA-4556 rev09/04

BULL'S EYE!



Chamfer self centers on pilot hole for perfect alignment every time.

SLUG-BUSTER SCTM



You'll hit the mark every time with the Greenlee Slug-Buster SCTM

Do a quality job in less time and with less potential for errors or alignment problems in mild steel— with the new Greenlee Slug-Buster SCTM knockout.

What's different? A unique, patent-pending self-centering feature that makes centering the punch on a pilot hole faster and easier, reducing rework and scrap. Just tighten

down the punch on your draw stud and let our new punch center itself on the pilot hole. No more trying to line up the die alignment marks or drawing crosshairs on the box to ensure alignment. The Slug-Buster SCTM is the fastest, easiest tool for punching holes that are perfectly on center with a pilot hole, reducing layout time, rework and scrap.

PRODUCT FEATURES

- **Save time and ensure accuracy!** Self-centering punch aligns itself on pilot hole.
- **No need to draw crosshairs** or line up die alignment marks.
- Unique, patent-pending punch profile also splits slugs for easier slug removal.



ORDERING INFORMATION

PUNCH UNIT		CONDUIT & PIPE SIZE	HOLE SIZE		MILD STEEL		WGT.		PUNCH		REPLACEMENT DIE		REPLACEMENT DRAW STUD		
CAT. NO.	UPC NO.		INCH	mm	GA.	mm	LBS.	g	CAT. NO.	UPC NO.	CAT. NO.	UPC NO.	CAT. NO.	UPC NO.	
77U-1/2	10801	1/2"	7/8	.885	22.2	10	3.5	.3	137	77P-1/2	11361	14722	14722	00042	00042
◆		1/2"	7/8	.885	22.2	10	3.5	—	—	77P-1/2P◆	11261	14722P◆	01992	00042	00042
77U-3/4	10802	3/4"	—	1.115	28.3	10	3.5	.8	363	77P-3/4	11362	124AV	06972	294AVBB	04040
◆		3/4"	—	1.115	28.3	10	3.5	—	—	77P-3/4P◆	11262	124AVP◆	01993	294AVBBP◆	01987
77U-1	10803	1"	—	1.362	34.6	10	3.5	1	454	77P-1	11363	126AV	04011	294AVBB	04040
◆		1"	—	1.362	34.6	10	3.5	—	—	77P-1P◆	11263	126AVP◆	01994	294AVBBP◆	01987
10807◆	10807	—	1-7/32	1.21	30.5	10	3.5	.9	408	11357	11357	3627B	3627B	294AVBB	04040
77U-1-1/4	10804	1-1/4"	—	1.701	43.2	10	3.5	1.3	590	77P-1-1/4	11364	128AV	04013	294AVBB	04040
◆		1-1/4"	—	1.701	43.2	10	3.5	—	—	77P-1-1/4P◆	11264	128AVP◆	01995	294AVBBP◆	01987
77U-1-1/2	10805	1-1/2"	—	1.951	49.6	10	3.5	2.1	953	77P-1-1/2	11365	440AV	04061	304AVBB	04042
◆		1-1/2"	—	1.951	49.6	10	3.5	—	—	77P-1-1/2P◆	11265	440AVP◆	01996	304AVBBP◆	01988
77U-2	10806	2"	2-3/8	2.416	61.4	10	3.5	2.3	1043	77P-2	11366	442AV	04063	304AVBB	04042
◆		2"	2-3/8	2.416	61.4	10	3.5	—	—	77P-2P◆	11266	442AVP◆	01997	304AVBBP◆	01988
10800	10800	1/2"-2" kit													

◆ *POP Packaged*

DISTRIBUTED BY



USA 800-435-0786 Fax: 800-451-2632
 815-397-7070 Fax: 815-397-1865
 Canada 800-435-0786 Fax: 800-524-2853
 International +1-815-397-7070 Fax: +1-815-397-9247

4455 Boeing Drive • Rockford, IL 61109-2988 • USA • 815-397-7070
 ©2004 Greenlee Textron Inc. • An ISO 9001 Company • Printed in USA
 Greenlee Textron Inc. is a subsidiary of Textron Inc.

www.greenlee.com

MA-4556 rev09/04