



PUSH IN CONDUIT TO CONDUIT CLAMP, 3/4" EMT1, 3/4" EMT2, 1/2" RIGID1, 1/2" RIGID2, 0.866"–1.18" OD1, 0.866"–1.18" OD2

## CATALOG NUMBER

**12P12P**



## FEATURES

Ideal as spacer between same or different size conduit

No tools required for installation

Top conduit to be used for support only, not a raceway

## PRODUCT ATTRIBUTES

Material: Spring Steel

Finish: nVent CADDY Armour

EMT Conduit Size 1: 3/4"

EMT Conduit Size 2: 3/4"

Rigid Conduit Size 1: 1/2"

Rigid Conduit Size 2: 1/2"

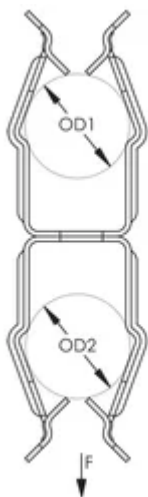
Outer Diameter 1 (OD1): 0.870" - 1.18"

Outer Diameter 2 (OD2): 0.870" - 1.18"

Ultimate Static Load (F): 25lb

## DIAGRAMS

---



## WARNING

---

nVent products shall be installed and used only as indicated in nVent's product instruction sheets and training materials. Instruction sheets are available at [www.nvent.com](http://www.nvent.com) and from your nVent customer service representative. Improper installation, misuse, misapplication or other failure to completely follow nVent's instructions and warnings may cause product malfunction, property damage, serious bodily injury and death and/or void your warranty.

### North America

+1.800.753.9221

Option 1 – Customer Care

Option 2 – Technical Support

### Europe

Netherlands:

+31 800-0200135

France:

+33 800 901 793

### Europe

Germany:

800 1890272

Other Countries:

+31 13 5835404

### APAC

Shanghai:

+ 86 21 2412 1618/19

Sydney:

+61 2 9751 8500



Our powerful portfolio of brands:  
**nVent.com CADDY ERICO HOFFMAN RAYCHEM SCHROFF**  
**TRACER**