



## MF-P CONDUIT TO STUD ATTACHMENT, 1" EMT, 1.181"–1.378" OD

### CATALOG NUMBER

**16PF**



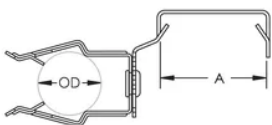
### FEATURES

- Easily snaps onto stud
- Push-in conduit support
- Fasten to stud with screw for additional support

### PRODUCT ATTRIBUTES

- Material: Spring Steel
- Finish: nVent CADDY Armour
- EMT Conduit Size: 1"
- Outer Diameter (OD): 1.180" - 1.38"
- A: 1.53"

### DIAGRAMS



**WARNING**

---

nVent products shall be installed and used only as indicated in nVent's product instruction sheets and training materials. Instruction sheets are available at [www.nvent.com](http://www.nvent.com) and from your nVent customer service representative. Improper installation, misuse, misapplication or other failure to completely follow nVent's instructions and warnings may cause product malfunction, property damage, serious bodily injury and death and/or void your warranty.

**North America**

+1.800.753.9221  
Option 1 – Customer Care  
Option 2 – Technical Support

**Europe**

Netherlands:  
+31 800-0200135  
France:  
+33 800 901 793

**Europe**

Germany:  
800 1890272  
Other Countries:  
+31 13 5835404

**APAC**

Shanghai:  
+ 86 21 2412 1618/19  
Sydney:  
+61 2 9751 8500



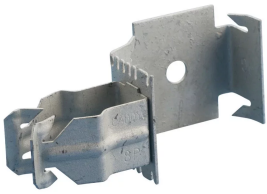
Our powerful portfolio of brands:  
**nVent.com CADDY ERICO HOFFMAN RAYCHEM SCHROFF**  
**TRACER**



## MF-P CONDUIT TO STUD ATTACHMENT, 1" EMT, 1.181"–1.378" OD

### CATALOG NUMBER

**16PF**



### FEATURES

Easily snaps onto stud

Push-in conduit support

Fasten to stud with screw for additional support

### PRODUCT ATTRIBUTES

Material: Spring Steel

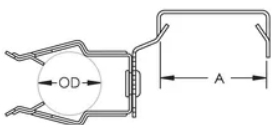
Finish: nVent CADDY Armour

EMT Conduit Size: 1"

Outer Diameter (OD): 1.180" - 1.38"

A: 1.53"

### DIAGRAMS



**WARNING**

---

nVent products shall be installed and used only as indicated in nVent's product instruction sheets and training materials. Instruction sheets are available at [www.nvent.com](http://www.nvent.com) and from your nVent customer service representative. Improper installation, misuse, misapplication or other failure to completely follow nVent's instructions and warnings may cause product malfunction, property damage, serious bodily injury and death and/or void your warranty.

**North America**

+1.800.753.9221  
Option 1 – Customer Care  
Option 2 – Technical Support

**Europe**

Netherlands:  
+31 800-0200135  
France:  
+33 800 901 793

**Europe**

Germany:  
800 1890272  
Other Countries:  
+31 13 5835404

**APAC**

Shanghai:  
+ 86 21 2412 1618/19  
Sydney:  
+61 2 9751 8500



Our powerful portfolio of brands:  
**nVent.com CADDY ERICO HOFFMAN RAYCHEM SCHROFF**  
**TRACER**