





Center Basket portfolio

The Cruze™ LED series combines contemporary styling, optimal illumination design, energy efficiency and installation features to deliver superior lighting using Cooper Lighting Solution's latest solid state technology.

Click on products to learn more

Quick install Aesthetic appeal Selectable Lumens and CCT Room side access



	CBRK	Cruze ST	CZS Cruze Selectable	Cruze SB
Sizes	1x4, 2x2, 2x4	1x4, 2x2, 2x4	1x4, 2x2, 2x4	1x4, 2x2, 2x4
lm/W (Max)	162	157	156	157
Lum (Max)	4700	17000	6500	7500
Life (@60K)	L84	L90	L94	L84
Lens	Frost, Ribbed	Round or Square, Frost - Ribbed or Smooth, Perf Inlays	Round or Square, Frost - Ribbed or Smooth, Perf Inlays	Round, Frost, Ribbed or Smooth
CRI	80+	80+ / 90	80+	80+ / 90
Depth	Standard 2.95"	Standard 3.25"	Standard 3.25"	Standard 3.25"
Driver access	Room-Side	Plenum	Plenum	Room-Side
Type	Retrofit Kit, Driver Access	Fixture, Standard	Fixture, Standard	Fixture, Driver Access
Air Venting	Yes	Yes	Yes	None

ST
3-6

CZS
7-10

SB
11-14

CBRK
15-18

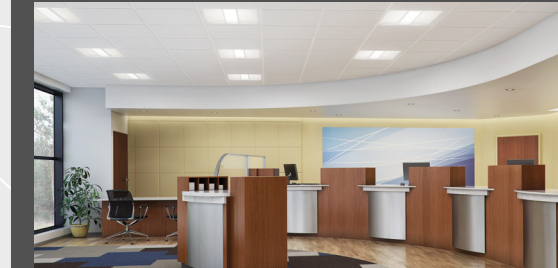
Connected lighting system

WaveLinx Wireless Connected Lighting System



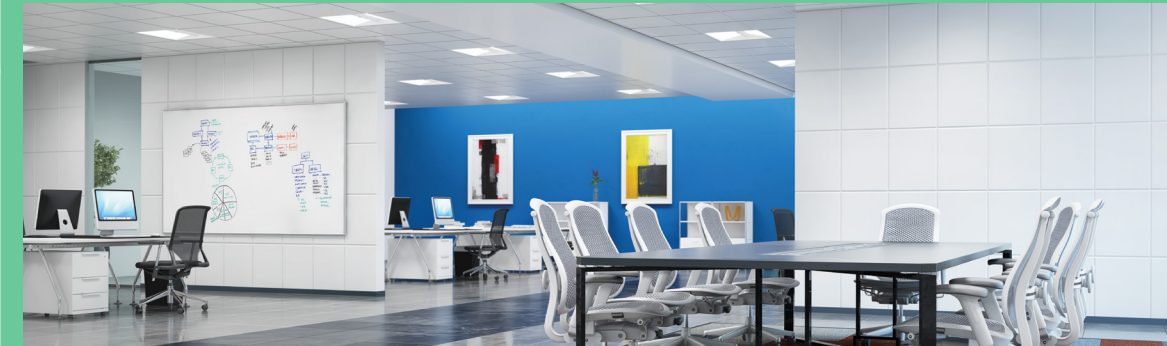
Adjustable occupancy sensing and daylight dimming control
Simple, secure wireless connectivity with out-of-the-box code compliance
Easy to use mobile application allows for fast set up and unlocks advanced control capabilities
Detection pattern covers standard ceiling applications up to 12 feet

SVPD Integrated Sensor System



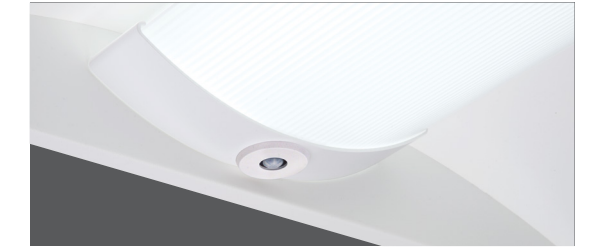
Adjustable occupancy sensing and daylight dimming control
Out-of-the-box functionality with no configuration required
Optional handheld remote for field adjustments and personal control
Low-bay and high-bay detection pattern options for various ceiling heights up to 30 feet

DLVP Distributed Low Voltage Power System



Save on labor costs. With an average of 40% reduction in man hours, DLVP reduces number of qualified electricians needed on the job site and installs 2X faster than traditional systems.
Save on materials. DLVP eliminates the need for unnecessary line-voltage materials.
No system commissioning. A contractor can configure the system with the flip of a switch, or by using a handheld remote.
Code compliance made easy. The system was designed to meet the energy code requirements of any space.

Integrated sensor controls



Cruze with sensor

Take compliance, network security, and energy savings into your own hands.

Metalux center-basket luminaires are available with integrated wireless sensors to simplify the controls installation, enable automatic code compliance and transmit key building data. These systems offer enhanced features to deliver value beyond lighting.





Cruze™ ST Architectural | Appeal

Cruze ST is a specification lensed LED troffer series that delivers architectural features with unmatched value. This high quality luminaire is constructed with the latest solid state lighting technology matched with architectural grade elements to deliver superior aesthetics, optical distribution, and energy efficiency. The Cruze ST is compatible with all of today's popular ceiling systems and is available with options and accessories to deliver the features needed for use in premier office spaces, primary and secondary schools, and retail merchandising.

Latchless design - architectural appeal

Very high efficacy (VHE) versions up to 157 lm/W and up to 17000 lumens

VividTune™ CCT tuning, 3000K - 5000K and 2700K - 6500K

Integrated sensors with IoT Connectivity

Multiple lens options (ribbed, smooth, round, square)

80 and 90CRI @ 3000K, 3500K, 4000K, 5000K CCT

1' x 4', 2' x 2' and 2' x 4' recessed versions available

Air venting option available





1' x 4' 2' x 2' 2' x 4'

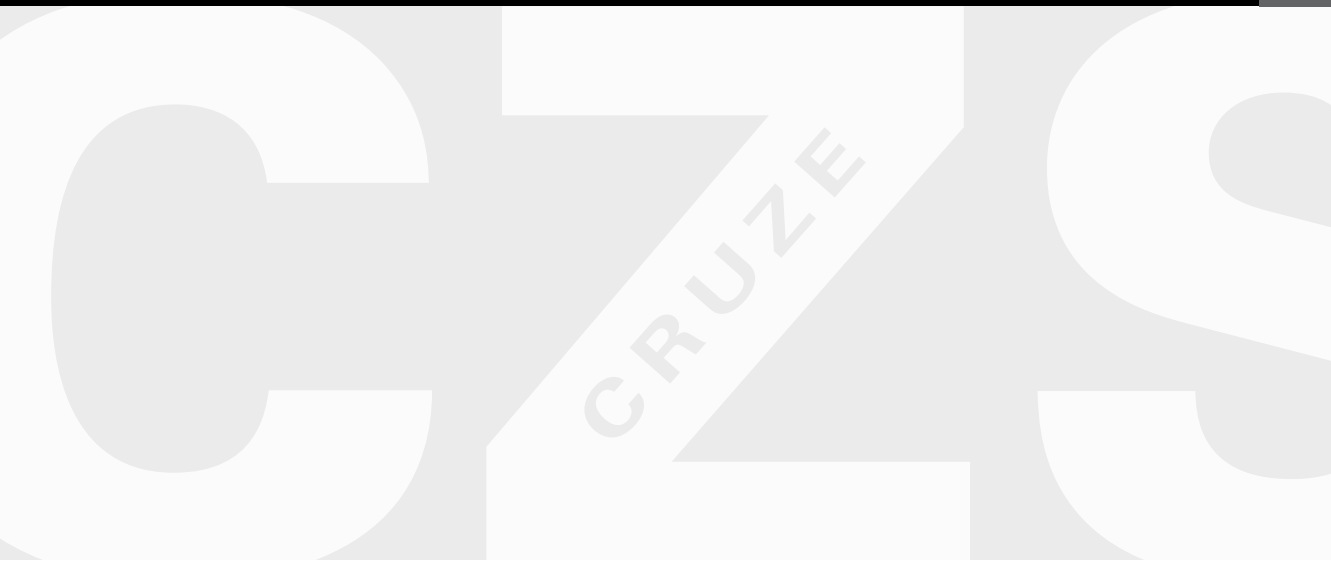
Cruze™ CZS Selectable Lumens + CCT

The Cruze™ Selectable troffer offers selectable lumen output and color temperature with a simple, easy to access toggle switch. The latch-less design, matte white paint and multiple lens options deliver architectural appeal and specification rich features. This troffer is constructed with Cooper Lighting's latest selectable technology platform and delivers unprecedented design flexibility, energy savings, visual comfort, and aesthetics at an incredible value. Cruze Selectable is an ideal choice for offices, schools, hospitals, and retail merchandising areas.

Design friendly with (3) selectable color temperatures and (3) selectable lumen packages accessible with an easy to experience toggle switch

- Selectable CCT in 3000K, 3500K, 4000K in >80 CRI**
- Selectable lumens in Low, Medium, and High up to 6,500 lumens**
- Selectable with configurable optionality**
- Up to 156 LPW for increased energy savings and reduced watts per sq. ft.**
- Latch-less design provides clean architectural look and feel**
- Curved and square lens for an upgraded look**

Easy to access toggle switches



Construction

Recessed 2' x 2', 2' x 4' and 1' x 4'
Standard depth: 2' x 2', 2' x 4' \updownarrow 3.25" 1' x 4' \updownarrow 2.25"
Latchless design for architectural appeal
CuLus damp location / IC Rated / RoHS compliant / DLC and DLC Premium qualified
Matte white pre-paint finish
Five-year warranty standard, 10 year available

Performance

High-performance efficacy up to 156 lumens per watt
Energy savings in excess of 70% compared to traditional fluorescent troffers
1' x 4': L91 @ 60,000 hrs. / 2' x 2': L90 @ 60,000 hrs. / 2' x 4': L90 @ 60,000 hrs.
Binning: Per ANSI, 3-step MacAdam ellipse

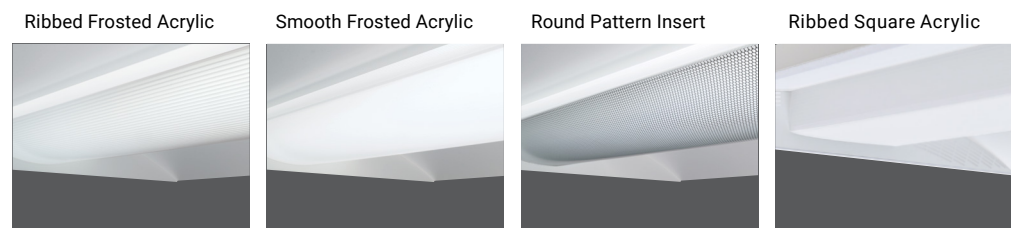
Options

Three stock SKUs
- 22CZSCT3-UNV: 2x2 Cruze Selectable, 30K/35K/40K, 2700lm-4000lm
- 24CZSCT3-UNV: 2x4 Cruze Selectable, 30K/35K/40K, 3500lm-6500lm
- 14CZSCT3-UNV: 1x4 Cruze Selectable, 30K/35K/40K, 3000lm-4400lm
Color Temperatures offered in 3000K, 3500K, and 4000K with lumens from 2,700 to 6,500
Acrylic lens options – Ribbed Frosted, Smooth Frosted, Round Perforated, and Smooth Square
Universal (120V-277V)
Emergency – EL7W and EL14W, ETRD and GTR and new UL924 listed fixture options
Surface mount field install kits
Flex wiring configurations
Chicago plenum rated version
Air venting for use in plenum air return applications
Wavelinx connected systems (WAA/WAB)

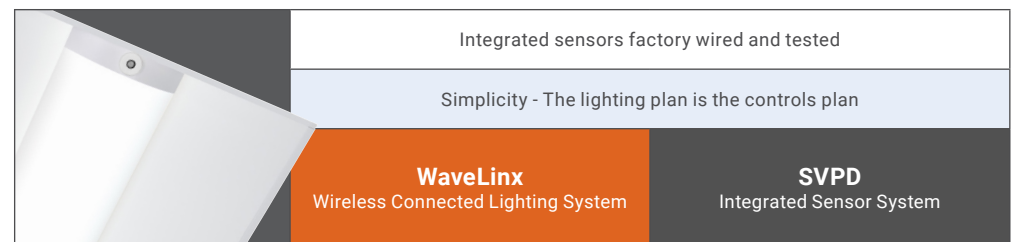
Compliance and approvals



Lens options



Connected lighting system



Selectable lumens and CCT



Flexibility at Your Fingertips

Multiple Light Choices, One Fixture.



SELECTABLE COLORS (CCT)

Choose from a wide range of color temperatures to set the ideal lighting scene.



SELECTABLE LUMENS

Select between the preset lumen outputs to create your optimal lighting experience.



Field selectable technology empowers you to take control. Go selectable to choose your way, every time. Adjust color temperatures (CCT) and lumen outputs with the flip of a switch!





CRUZE SB



CRUZE SB

Cruze™ SB Architectural | Access

Cruze SB is a specification lensed troffer series that delivers architectural aesthetics with additional features to meet the most demanding applications. This high quality luminaire is constructed with the latest solid state lighting technology. It offers servicing of electronics from below the ceiling plane, optimized optical distribution, superior performance, and market leading energy efficiency. The Cruze SB is compatible with all of today's popular ceiling systems and is available with a number of options and accessories for application versatility.

Service from below - door access

High performance efficacy up to 154 lm/W

VividTune™ CCT tuning, 3000K - 5000K and 2700K - 6500K

Integrated sensors with IoT Connectivity

Multiple lens options for customizable looks

80 and 90CRI @ 3000K, 35000K, 4000K, 5000K CCT

1' x 4', 2' x 2' and 2' x 4' recessed versions available



Construction

Recessed 2' x 2', 2' x 4' and 1' x 4'

Standard depth: 2' x 2', 2' x 4' \updownarrow 3.25" 1' x 4' \updownarrow 5.4"

Tool-less hinged door access, CAM latches and PAF finish

CuLus damp location / IC Rated / RoHS compliant

DLC and DLC Premium qualified

Five-year warranty standard, 10 year available

Performance

High-performance efficacy up to 157 lumens per watt

Energy savings in excess of 65% compared to traditional fluorescent troffers

1' x 4': L84 @ 60,000 hrs. / 2' x 2': L79 @ 60,000 hrs. / 2' x 4': L80 @ 60,000 hrs.

Binning: Per ANSI, 3-step MacAdam ellipse

Options

Lumen packages offered as MTO up to 7500 lumens

Acrylic lens options – Ribbed Frosted, Smooth Frosted, and Round Perforated

Universal (120V-277V) or 347V

Emergency – EL7W and EL14W, ETRD and GTR

Surface mount field install kits

Flex wiring configurations

Chicago plenum rated version

Lens options

Ribbed Frosted Acrylic Lens



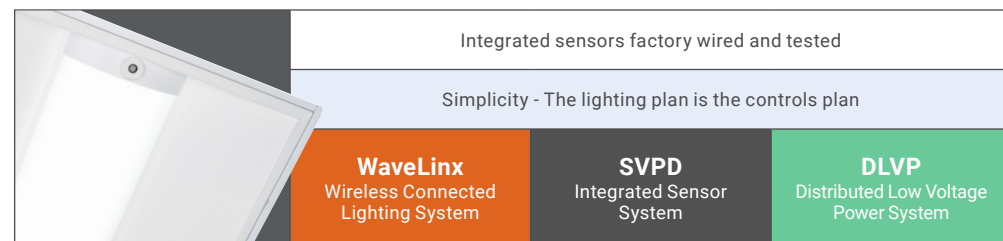
Smooth Frosted Acrylic Lens



Round Pattern Insert



Connected lighting system

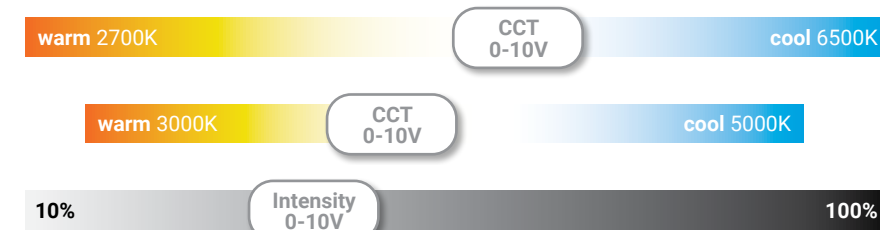
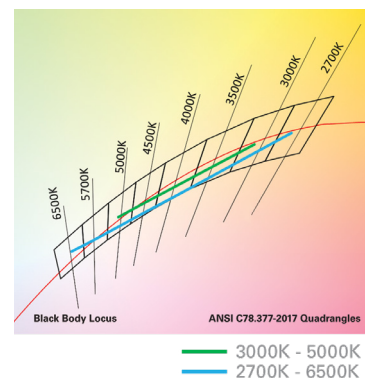


VividTune

color tuning solutions

CRUZE SB LED with VividTune Tunable White

VividTune tunable white luminaires from Cooper Lighting Solutions deliver high-quality light in a broad range of continuously variable color temperatures and intensities. Create a dynamic environment by adjusting the ambient light warmer or cooler to influence mood, support the task at hand, or create a dramatic ambience. The ability to control correlated color temperature and intensity separately using simple controls is the next evolution of LED lighting for the commercial, educational, healthcare and hospitality space. The unparalleled flexibility and number of available lighting environments enable users to find the right light with tunable white.



Compliance and approvals



Lasts 32 Years





CBRK

Cooper Kit **CBRK** Architectural | Speed

The Metalux CooperKit from Cooper Lighting Solutions is a LED lighting solution for customers looking to upgrade their fluorescent luminaires to a high performing aesthetically-pleasing LED system without the need to install a complete luminaire.

This innovative, high quality retrofit kit is dedicated to the latest solid state lighting and driver technology for optimal performance and energy efficiency. The retrofit kit is engineered for simple and quick installation making it easy to switch to LED.

Center basket fixture in 1x4, 2x2 and 2x4 sizes

Easy and quick installation

Contemporary and modern design

Reduced energy consumption

DLC Premium listed

Integrated sensors with IOT Connectivity

Minimal glare



Installs in minutes!

Low Energy + High Performance

- Eligible for maximum rebates and energy savings due to high efficacy/low wattage models
- DesignLights Consortium® Qualified for Standard and Premium (Efficacies up to 164 lumens/watt)

Long life = Low Maintenance

- Projected lumen maintenance based on TM21 testing standards is L85 @ 60,000 hours

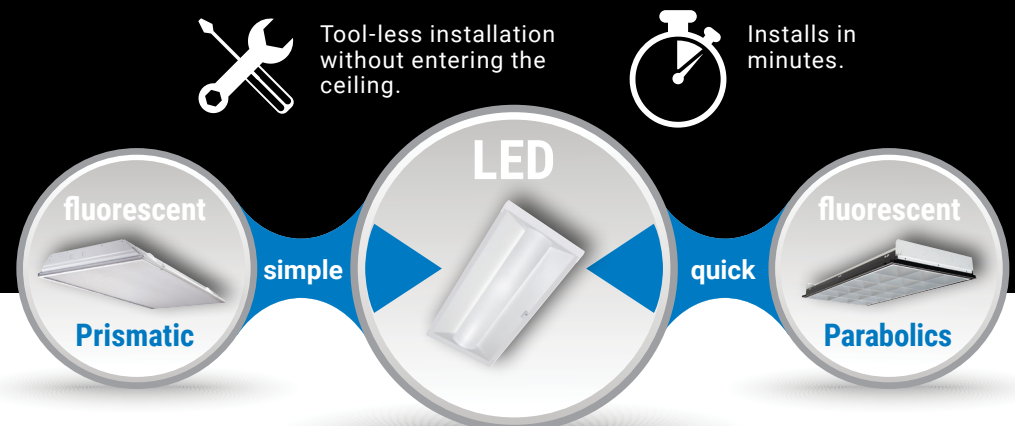
Guaranteed Performance

- All CooperKit products come with Cooper Lighting Solutions 5-year limited warranty
- All CooperKit retrofit kits are powered by our most advanced drivers for optimal performance

Cooper Kit
CBRK



Convert fluorescent to energy-efficient LED



Connected lighting system

- Integrated sensors factory wired and tested
- Simplicity - The lighting plan is the controls plan
- WaveLinx** Wireless Connected Lighting System
- SVPD** Integrated Sensor System
- DLVP** Distributed Low Voltage Power System

Energy savings

Operating and maintenance costs of a lighting system are dramatically impacted by the specified lamp source and electrical system. Total system input watts and fixture operating life should be the driving considerations when addressing energy consumption and total cost of ownership. Energy savings increase when energy consumption is reduced and maintenance intervals are extended.



Energy Performance Table

Standard Efficacy versions shown in chart. High Performance options are available for additional energy savings.

1' x 4' CBRK*			Popular Fluorescent Fixtures			Energy Savings
Catalog Number	Lumens**	Wattage	Fixture Type	Lumens**	Wattage	
14CBRK-30-UNV-L835-CD1-U	3000	22	Parabolic 232	3136	52.0	56%
			Troffer 232	3920		
			Indirect Basket 332	3248		
2' x 2' CBRK			Popular Fluorescent Fixtures			Energy Savings
Catalog Number	Lumens**	Wattage	Fixture Type	Lumens**	Wattage	
22CBRK-31-UNV-L835-CD1-U	3100	21	Troffer 2U6T8	3862	52.1	71%
			Troffer 317	2601	42.9	65%
			Parabolic 317	2588	49.1	69%
2' x 4' CBRK			Popular Fluorescent Fixtures			Energy Savings
Catalog Number	Lumens**	Wattage	Fixture Type	Lumens**	Wattage	
24CBRK-36-UNV-L835-CD1-U	3600	25	Troffer 232	4310	52.0	52%
			Indirect Basket 232	3873	52.0	52%

Compliance and approvals



Lighting Brands

Ametrix
AtLite
Corelite
Ephesus
Fail-Safe
Halo
Halo Commercial
Invue
io
Iris
Lumark
Lumière
McGraw-Edison
Metalux
MWS
Neo-Ray
Portfolio
RSA
Shaper
Shaper PrentaLux - 3D Printed Lighting
Streetworks
Sure-Lites
Telensa

Controls Brands

Greengate
Fifth Light

Connected Lighting Systems

WaveLinx

IoT Platforms

Trellix



Cooper Lighting Solutions
1121 Highway 74 South
Peachtree City, GA 30269
P: 770-486-4800
www.cooperlighting.com

Canada Sales
5925 McLaughlin Road
Mississauga, Ontario L5R 1B8
P: 905-501-3000
F: 905-501-3172

© 2022 Cooper Lighting Solutions
All Rights Reserved
Printed in USA
Publication No. BR519042EN
December 8, 2022 1:58 PM

Cooper Lighting Solutions is a registered trademark.

All other trademarks are property of their respective owners.

Product availability, specifications, and compliances are subject to change without notice.