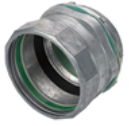




# ELLIOTT ELECTRIC SUPPLY

We Deliver...Lower Cost, Quality Products, & Personal Service

2310 N. Stallings Dr.  
75964-0000, TX Nacogdoches  
Phone: 936-569-7941  
Fax: 936-560-4685



## 258RTI2 3-1/2" Raintight Dicast Compression Connector

*Bridgeport Fittings*

Catalog Number	258RTI2
Manufacturer	Bridgeport Fittings
Description	3-1/2" Raintight Insulated Connector, NPT Thread
Weight per unit	238.0 (lbs/each)
Product Category	Die Cast Insulated Straight CO

### Features

Connector Type	Compression
insulation	Insulated Throat
media	Yes

### Dimensions and Weight

Size	3-1/2
------	-------

### Descriptions

Description	3-1/2" RAIN TIGHT DICAST COMPRESSION CONNECTOR
extra long description	BPT 258-RTI2 3-1/2" RAIN TIGHT INS C
Long Description	3-1/2" Raintight Insulated Connector, NPT THREAD
Product Type	3-1/2" Raintight Ins Connector
Special Features	The Dual Internal sealing rings create a raintight seal.

### Manufacturer Information

Brand	Bridgeport
GTIN	00781747192585
Manufacturers Part Number	258-RTI2
UPC	781747192585

### Taxonomies, Classifications, and Categories

Type	Raintight Compression
------	-----------------------

### Trade Size

Trade Size	3-1/2
------------	-------

### Packaging

Carton	1
Package	6
Weight Per each	238



# ELLIOTT ELECTRIC SUPPLY

We Deliver...Lower Cost, Quality Products, & Personal Service

2310 N. Stallings Dr.  
75964-0000, TX Nacogdoches  
Phone: 936-569-7941  
Fax: 936-560-4685

## Uses, Certifications, and Standards

Application

Compression style connector with internal sealing ring and knockout gasket to create a raintight seal when connecting EMT to box or enclosure. With Bridgeport's newly redesigned Raintight Compression Connectors, 256-RTI2 thru 259-RTI2, contractors can install just one wet location fitting for either thread less Rigid / IMC or EMT. These 3-1/2" dual Listed Zinc Alloy fittings come standard with a 105° C temperature rated insulated throat and the words "Rigid / EMT and RAIN TIGHT" clearly cast into the body.

standard

cULus