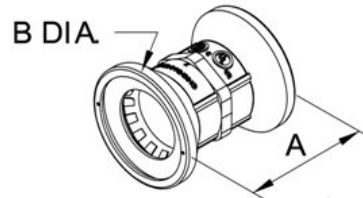


Couplings - Zinc

Images



Application

The 260-MB is used to couple two properly deburred lengths of 1/2" EMT raceway. Simply push the fitting on to the raceway with a slight twist. Remove the fitting by unthreading it from the conduit end. No tools are required. Dry Locations Only. Concrete Tight. Patented

Product Information

Material: Zinc alloy body & Zinc plated steel
locking ring and washer
Finish: Mirror Finish/Ball Burnished

Certifications & Codes:

CSA File Number: 22.2 18.3-04
Federal Specification Number: A-A-50553
NEMA Standard: FB-1
UL File Number: E24001,cULus
UL Standard: UL-514B
UNSPSC: 39121434
Patent Number: 8,274,000; 8,487,197;
6,765,143

[Download Photo Image](#) [Download Dimensional Image](#)
Dimension A in Inches: 1.37
Dimension B in Inches: 1.25

Catalog ID: 260-MB

UPC Number: 78174723260

Description: Bridgeport Fittings Mighty-Bite™ Couplings are dry location PUSH-EMT® fittings.

Application: The 260-MB is used to couple two properly deburred lengths of 1/2" EMT raceway. Simply push the fitting on to the raceway with a slight twist. Remove the fitting by unthreading it from the conduit end. No tools are required. Dry Locations Only. Concrete Tight. Patented

Trade Size: 1/2"

Country of Manufacture: USA

Std Pkg Qty: 250

Unit Qty: 25