

Splice Connectors

Butt Splices

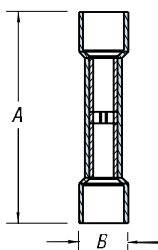
- Wires are butted together and crimped at each end of the splice
- Available either non-insulated or insulated with nylon or PVC
- Nylon insulated splices meet or exceed the requirements of MIL-T-7928
- Color coded according to wire size

Parallel Splices

- Wires are laid side by side in the connector, and the connection is made in one crimp
- Offer advantages in simplicity of installation and small size
- One crimp completes the splice



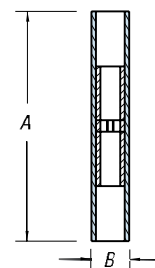
Vinyl-Insulated Butt Splices — Expanded Insulation



| CAT. NO. | PKG. QTY. | WIRE RANGE | MAX. INS. | REC. TOOL | DIMENSIONS | |
|------------|-----------|------------|-----------|-----------|------------|-----|
| | | | | | A | B |
| 2RA18X | 100 | 22-18 | .170 | ERG4001 | 1.13 | .25 |
| RAA217-170 | 1,000 | 22-18 | .170 | | 1.13 | .25 |
| RAA217 | 1,000 | 22-18 | .150 | | 1.13 | .23 |
| 2RB14X | 100 | 16-14 | .200 | | 1.13 | .26 |
| RBB217-200 | 1,000 | 16-14 | .200 | | 1.13 | .26 |
| RBB217 | 1,000 | 16-14 | .170 | | 1.13 | .24 |
| 2RC10X | 50 | 12-10 | .250 | | 1.31 | .31 |
| RCC217-250 | 500 | 12-10 | .250 | | 1.31 | .31 |
| RCC217 | 1,000 | 12-10 | .210 | | 1.31 | .28 |

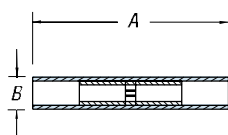
Note: RCC217 is not expanded.

Nylon-Insulated Aircraft Splices



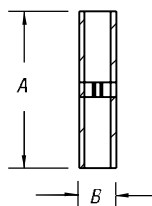
| CAT. NO. | PKG. QTY. | WIRE RANGE | REC. TOOL | DIMENSIONS | |
|----------|-----------|------------|-----------|------------|-----|
| | | | | A | B |
| 2RZZ | 50 | 26-22 | ERG4006 | 1.22 | .15 |
| RZZ23 | 500 | 26-22 | | 1.22 | .15 |
| 2RAA | 50 | 22-18 | ERG4001 | 1.52 | .25 |
| RAA23 | 500 | 22-18 | | 1.52 | .25 |
| 2RBB | 50 | 16-14 | | 1.52 | .28 |
| RBB23 | 500 | 16-14 | | 1.52 | .28 |
| 2RCC | 25 | 12-10 | | 1.54 | .35 |
| RCC23 | 250 | 12-10 | | 1.54 | .35 |

Nylon-Insulated Butt Splices



| CAT. NO. | PKG. QTY. | MAX. INS. DIA. | WIRE RANGE | REC. TOOL | DIMENSIONS | |
|----------|-----------|----------------|------------|-----------|------------|-----|
| | | | | | A | B |
| 2RA18 | 100 | .115 | 22-18 | ERG4001 | 1.19 | .18 |
| RAA21 | 1,000 | .115 | 22-18 | | 1.19 | .18 |
| 2RB14 | 100 | .148 | 16-14 | | 1.19 | .21 |
| RBB21 | 1,000 | .148 | 16-14 | | 1.19 | .21 |
| 2RC10 | 50 | .210 | 12-10 | ERG4007 | 1.26 | .28 |
| RCC21 | 500 | .210 | 12-10 | | 1.26 | .28 |
| 2RD8 | 25 | .340 | 8 | TBM6S | 1.69 | .36 |
| RDD27 | 200 | .340 | 8 | | 1.69 | .36 |
| 2RE6 | 20 | .420 | 6 | TBM6S | 1.85 | .45 |
| REE28 | 200 | .420 | 6 | | 1.85 | .45 |
| 2RF4 | 15 | .510 | 4 | | 1.85 | .52 |

Tefzel® Insulated Butt Splices

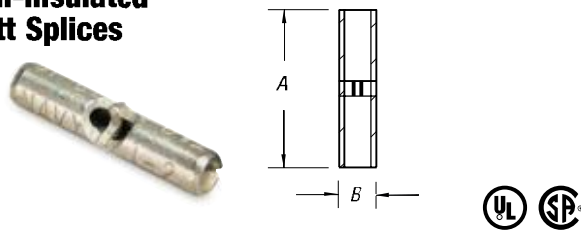


| CAT. NO. | PKG. QTY. | WIRE RANGE | MAX. INS. DIA. | REC. TOOL | DIMENSIONS | |
|----------|-----------|------------|----------------|-----------|------------|------|
| | | | | | A | B |
| RAAT21 | 1,000 | 22-18 | 1.22 | WT145C | 1.22 | .115 |
| RBBT21 | 1,000 | 16-14 | 1.22 | | 1.22 | .148 |
| RCCT21 | 1,000 | 12-10 | 1.22 | | 1.22 | .210 |

Tefzel® is a registered trademark of DuPont.

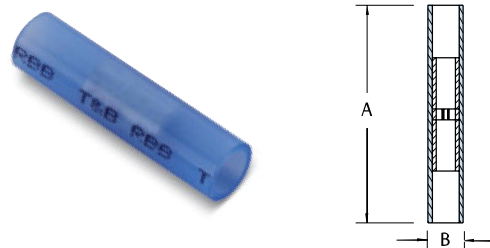
Splice Connectors

Non-Insulated Butt Splices



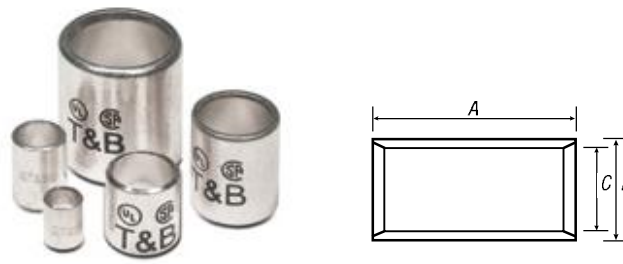
| CAT. NO. | PKG. QTY. | WIRE RANGE | REC. TOOL | DIMENSIONS | |
|----------|-----------|------------|-----------|------------|-----|
| | | | | A | B |
| 2A-18 | 100 | 22-18 | ERG4002 | .62 | .12 |
| AA2 | 1,000 | 22-18 | | .62 | .12 |
| 2B-14 | 100 | 16-14 | ERG4002 | .62 | .16 |
| BB2 | 1,000 | 16-14 | | .62 | .16 |
| 2C-10 | 50 | 12-10 | ERG4005 | .72 | .22 |
| CC2 | 500 | 12-10 | | .72 | .22 |
| 2D-8 | 25 | 9-8-7 | ERG4005 | 1.03 | .28 |
| DD102 | 200 | 9-8-7 | | 1.03 | .28 |
| 2E-6 | 20 | 6-5 | TBMGS | 1.12 | .37 |
| EE2 | 200 | 6-5 | | 1.12 | .37 |
| 2F-4 | 15 | 4-3 | TBMGS | 1.25 | .44 |
| FF2 | 200 | 4-3 | | 1.25 | .44 |
| 2G21 | 5 | 2-1 | | 1.72 | .55 |
| GG2 | 25 | 2-1 | | 1.72 | .55 |

Nylon-Insulated Parallel Splices



| CAT. NO. | PKG. QTY. | WIRE RANGE | REC. TOOL | DIMENSIONS | |
|----------|-----------|------------|-----------|------------|-----|
| | | | | A | B |
| 2A20 | 100 | 22-20 | ERG4001 | .84 | .20 |
| RAA24 | 1,000 | 22-20 | | .84 | .20 |
| 2B-16 | 100 | 18-16 | | .84 | .23 |
| RBB25 | 1,000 | 18-16 | | .84 | .23 |
| 2C-12 | 50 | 14-12 | | .90 | .28 |
| RCC26 | 500 | 14-12 | | .90 | .28 |

Sta-Kon® Parallel Splices



| CAT. NO. | WIRE RANGE | CIR. MIL RANGE | REC. TOOL | LENGTH (A) | O.D. (B) | I.D. (C) | PKG. QTY. |
|-----------|------------|-----------------|-------------|------------|----------|----------|-----------|
| A18-PS-M | 22-16 AWG | 509-3,260 | ERG4002 | .314 | .129 | .086 | 1,000 |
| B14-PS-M | 16-14 AWG | 2,050-5,180 | ERG4002 | .315 | .155 | .113 | 1,000 |
| C10-PS-D | 12-10 AWG | 5,180-13,100 | ERG4005 | .380 | .220 | .170 | 500 |
| D8-PS-D | 8 AWG | 13,100-20,800 | ERG4005 | .375 | .260 | .180 | 500 |
| E6-PS-D | 6 AWG | 20,800-33,100 | WT115A | .500 | .365 | .266 | 500 |
| F4-PS-W | 4 AWG | 33,100-52,600 | WT115A | .531 | .410 | .302 | 250 |
| G2-PS-W | 2 AWG | 52,600-83,700 | | .640 | .521 | .396 | 250 |
| H1/0-PS-C | 1/0 AWG | 83,700-119,500 | TBM8-750M-1 | .750 | .571 | .446 | 100 |
| J2/0-PS-C | 2/0 AWG | 119,500-150,500 | | .750 | .632 | .507 | 100 |
| K3/0-PS-L | 3/0 AWG | 150,500-190,000 | | .750 | .701 | .564 | 50 |
| L4/0-PS-L | 4/0 AWG | 190,000-231,100 | | .770 | .766 | .629 | 50 |
| M250-PS-Q | 250 kcmil | 231,100-300,000 | | 1.063 | .926 | .749 | 25 |
| N300-PS-X | 300 kcmil | 300,000-380,000 | | 1.125 | 1.100 | .882 | 10 |
| P400-PS-X | 400 kcmil | 380,000-478,000 | | 1.250 | 1.200 | .956 | 10 |
| R500-PS-V | 500 kcmil | 478,000-600,000 | 1.438 | 1.330 | 1.060 | 5 | |

The total combined cross sectional area of all wires must be within the CMA range.

Rated at 150° C.