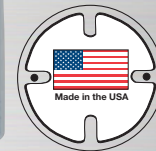


2-Gang Lug Boxes

Suitable for wet locations



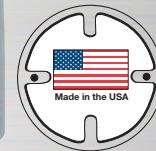
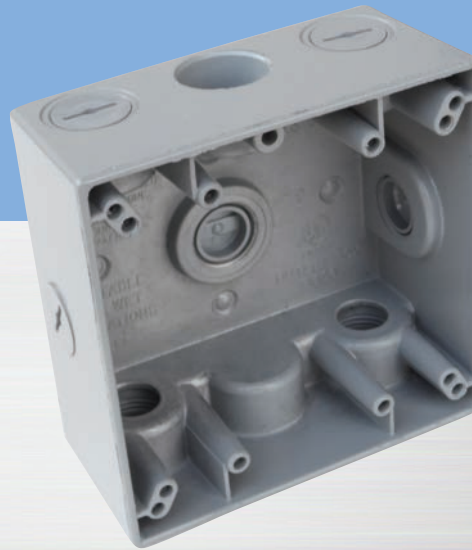
- All 2-gang boxes come with detachable lugs, 2 close-up plugs, and self-tapping ground screw.
- 4.5" x 4.5" x 2.0" deep.
- Heavy duty die-cast aluminum, .094" thick, with powder finish.
- For use in all indoor and outdoor damp or wet locations, with all standard FS, outlet, lampholder or splice box covers.
- UL Listed for the United States and Canada.
- NEMA 3R Rated.
- Comply with Federal Specification AA-50563
- All of the boxes on this page are made in the U.S.A.

Catalog No.	No. Outlets	Location	Hub Size	Color	Cubic Capacity	Carton Quantity	Weight per 100 units
 30233	3	1 in each end, 1 in back	1/2"	Gray	30.5"	10	110 lbs.
30233W	3	1 in each end, 1 in back	1/2"	White	30.5"	10	110 lbs.
30233Z	3	1 in each end, 1 in back	1/2"	Bronze	30.5"	10	110 lbs.
30236	3	1 in each end, 1 in back	3/4"	Gray	30.5"	10	110 lbs.
30236W	3	1 in each end, 1 in back	3/4"	White	30.5"	10	110 lbs.
30236Z	3	1 in each end, 1 in back	3/4"	Bronze	30.5"	10	110 lbs.
30267	3	1 in each end, 1 in back	1"	Gray	30.5"	10	110 lbs.
30267W	3	1 in each end, 1 in back	1"	White	30.5"	10	110 lbs.
30267Z	3	1 in each end, 1 in back	1"	Bronze	30.5"	10	110 lbs.
 30239	4	2 in one end, 1 in other end, 1 in back	1/2"	Gray	30.5"	10	110 lbs.
30239W	4	2 in one end, 1 in other end, 1 in back	1/2"	White	30.5"	10	110 lbs.
30239Z	4	2 in one end, 1 in other end, 1 in back	1/2"	Bronze	30.5"	10	110 lbs.
30242	4	2 in one end, 1 in other end, 1 in back	3/4"	Gray	30.5"	10	110 lbs.
 30245	5	2 in each end, 1 in back	1/2"	Gray	30.5"	10	110 lbs.
30245W	5	2 in each end, 1 in back	1/2"	White	30.5"	10	110 lbs.
30245Z	5	2 in each end, 1 in back	1/2"	Bronze	30.5"	10	110 lbs.
30248	5	2 in each end, 1 in back	3/4"	Gray	30.5"	10	110 lbs.
 30251	5	1 in each end, 1 in each side, 1 in back	1/2"	Gray	30.5"	10	110 lbs.
30254	5	1 in each end, 1 in each side, 1 in back	3/4"	Gray	30.5"	10	110 lbs.
30270	5	1 in each end, 1 in each side, 1 in back	1"	Gray	30.5"	10	110 lbs.
 30257	6	2 in one end, 1 in other end, 1 in each side, 1 in back	1/2"	Gray	30.5"	10	110 lbs.
30260	6	2 in one end, 1 in other end, 1 in each side, 1 in back	3/4"	Gray	30.5"	10	110 lbs.
 30263	7	2 in each end, 1 in each side, 1 in back	1/2"	Gray	30.5"	10	110 lbs.
30266	7	2 in each end, 1 in each side, 1 in back	3/4"	Gray	30.5"	10	110 lbs.
 30269	7	3 in each end, 1 in back	1/2"	Gray	30.5"	10	110 lbs.
30272	7	3 in each end, 1 in back	3/4"	Gray	30.5"	10	110 lbs.



2-Gang Lug Boxes

Suitable for wet locations



- All 2-gang boxes come with detachable lugs, 2 close-up plugs, and self-tapping ground screw.
- 4.5" x 4.5" x 2.0" deep.
- Heavy duty die-cast aluminum, .094" thick, with powder finish.
- For use in all indoor and outdoor damp or wet locations, with all standard FS, outlet, lampholder or splice box covers.
- UL Listed for the United States and Canada.
- NEMA 3R Rated.
- Comply with Federal Specification AA-50563
- All of the boxes on this page are made in the U.S.A.

Catalog No.	No. Outlets	Location	Hub Size	Color	Cubic Capacity	Carton Quantity	Weight per 100 units
 30233	3	1 in each end, 1 in back	1/2"	Gray	30.5"	10	110 lbs.
30233W	3	1 in each end, 1 in back	1/2"	White	30.5"	10	110 lbs.
30233Z	3	1 in each end, 1 in back	1/2"	Bronze	30.5"	10	110 lbs.
30236	3	1 in each end, 1 in back	3/4"	Gray	30.5"	10	110 lbs.
30236W	3	1 in each end, 1 in back	3/4"	White	30.5"	10	110 lbs.
30236Z	3	1 in each end, 1 in back	3/4"	Bronze	30.5"	10	110 lbs.
30267	3	1 in each end, 1 in back	1"	Gray	30.5"	10	110 lbs.
30267W	3	1 in each end, 1 in back	1"	White	30.5"	10	110 lbs.
30267Z	3	1 in each end, 1 in back	1"	Bronze	30.5"	10	110 lbs.
 30239	4	2 in one end, 1 in other end, 1 in back	1/2"	Gray	30.5"	10	110 lbs.
30239W	4	2 in one end, 1 in other end, 1 in back	1/2"	White	30.5"	10	110 lbs.
30239Z	4	2 in one end, 1 in other end, 1 in back	1/2"	Bronze	30.5"	10	110 lbs.
30242	4	2 in one end, 1 in other end, 1 in back	3/4"	Gray	30.5"	10	110 lbs.
 30245	5	2 in each end, 1 in back	1/2"	Gray	30.5"	10	110 lbs.
30245W	5	2 in each end, 1 in back	1/2"	White	30.5"	10	110 lbs.
30245Z	5	2 in each end, 1 in back	1/2"	Bronze	30.5"	10	110 lbs.
30248	5	2 in each end, 1 in back	3/4"	Gray	30.5"	10	110 lbs.
 30251	5	1 in each end, 1 in each side, 1 in back	1/2"	Gray	30.5"	10	110 lbs.
30254	5	1 in each end, 1 in each side, 1 in back	3/4"	Gray	30.5"	10	110 lbs.
30270	5	1 in each end, 1 in each side, 1 in back	1"	Gray	30.5"	10	110 lbs.
 30257	6	2 in one end, 1 in other end, 1 in each side, 1 in back	1/2"	Gray	30.5"	10	110 lbs.
30260	6	2 in one end, 1 in other end, 1 in each side, 1 in back	3/4"	Gray	30.5"	10	110 lbs.
 30263	7	2 in each end, 1 in each side, 1 in back	1/2"	Gray	30.5"	10	110 lbs.
30266	7	2 in each end, 1 in each side, 1 in back	3/4"	Gray	30.5"	10	110 lbs.
 30269	7	3 in each end, 1 in back	1/2"	Gray	30.5"	10	110 lbs.
30272	7	3 in each end, 1 in back	3/4"	Gray	30.5"	10	110 lbs.

