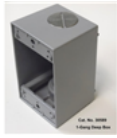




# ELLIOTT ELECTRIC SUPPLY

We Deliver...Lower Cost, Quality Products, & Personal Service

2310 N. Stallings Dr.  
75964-0000, TX Nacogdoches  
Phone: 936-569-7941  
Fax: 936-560-4685



## 30589 Deep 1G RT Box W/3 1-In Mulberry Metal

Catalog Number	30589
Manufacturer	Mulberry Metal
Description	Mulberry; Weatherproof Box; One Gang Deep; Number Of Outlet: 3; Material: 094 In Heavy Duty Die Cast Aluminum; Size: 2.750 In Width X 4.500 In Length X 2.625 In Depth; Color: Gray; Mounting: Detachable Lug; Cubic Capacity: 24 Cu-In; Outlets/Location: (1) Each End, (1) Back; Hub Size: 1 In
Weight per unit	N/A
Product Category	Bar Hangers & Outlet Box Accy.

### Features

Material	094 IN Heavy Duty Die Cast Aluminum
number of outlet	3

### Material, Color, and Finish

Color	Gray
-------	------

### Dimensions and Weight

Depth	2.625
Length	4.5
Width	2.75

### Descriptions

Description	DEEP 1G RT BOX W/3 1-IN
extra long description	MULB 30589 WP DEEP BOX 3H-1"
Long Description	Mulberry; Weatherproof Box; One Gang Deep; Number Of Outlet: 3; Material: 094 IN Heavy Duty Die Cast Aluminum; Size: 2.750 IN Width X 4.500 IN Length X 2.625 IN Depth; Color: Gray; Mounting: Detachable Lug; Cubic Capacity: 24 CU-IN; Outlets/location: (1) Each End, (1) Back; Hub Size: 1 IN
Product Type	WP Deep Box 3H-1"
Special Features	2.75 IN X 4.5 IN X 2.625 IN Deep;Features: All 1-Gang Deep Boxes Come With Detachable Lugs, 2 Close-Up Plugs, And Self-Tapping Ground Screw;Ground Screw Hole Is In Bottom Of Box;Heavy Duty Die-Cast Aluminum, 0.094 IN Thick, With Powder Finish;Hub Size: 1 IN;Outlets/location: (1) Each End, (1) Back;UL Listed And CSA Approved

### Manufacturer Information

Brand	Mulberry
GTIN	00095327305891
Manufacturers Part Number	30589
UPC	095327305891



# ELLIOTT ELECTRIC SUPPLY

We Deliver...Lower Cost, Quality Products, & Personal Service

2310 N. Stallings Dr.  
75964-0000, TX Nacogdoches  
Phone: 936-569-7941  
Fax: 936-560-4685

## Taxonomies, Classifications, and Categories

Type	One Gang Deep
------	---------------

## Packaging

Carton	1
--------	---

Weight Per each	0
-----------------	---

## Uses, Certifications, and Standards

Application	For Wet Locations
-------------	-------------------

Mounting	Detachable Lug
----------	----------------

standard	UL Listed, CSA Certified
----------	--------------------------