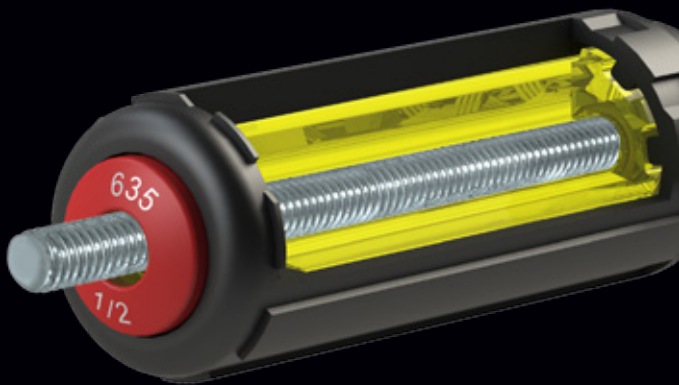


DRIVERS

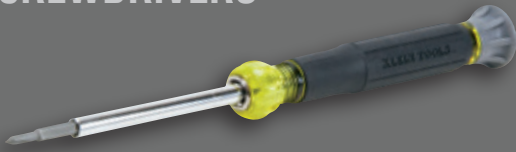
SCREW, NUT, MULTI & ADJUSTABLE



As the tradesperson's needs change, so do Klein's products. The latest additions to our line of drivers feature added functionality to increase productivity and decrease the number of tools on the belt or in the bag.



4-IN-1 ELECTRONICS SCREWDRIVERS



Four different bits in one tool

- Rotating cap for optimum and precise control
- Heat-treated precision machined tip for greater strength

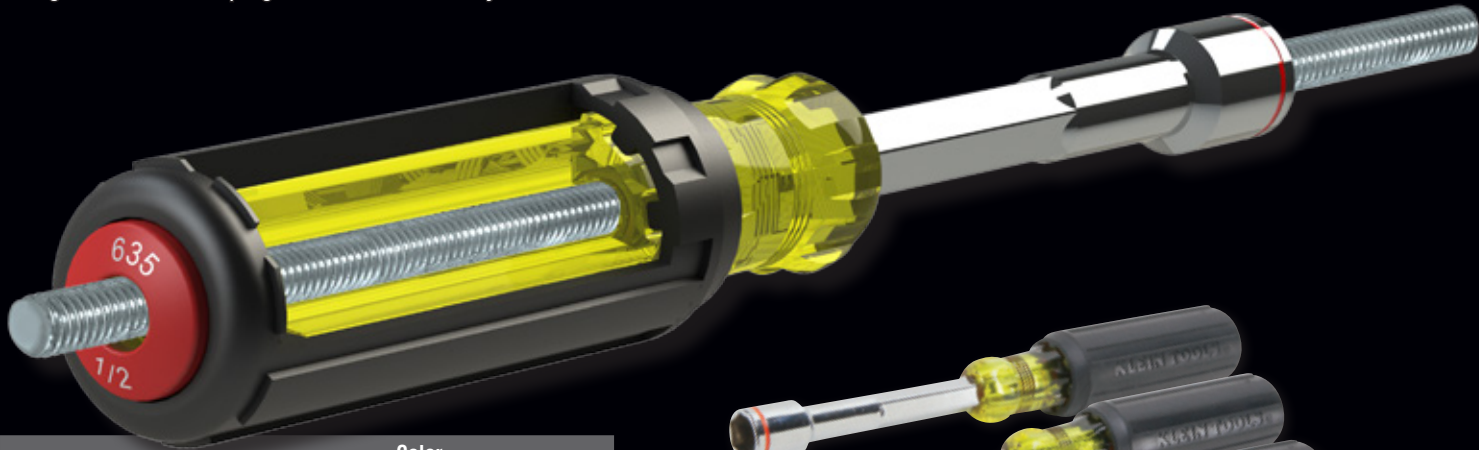
| Cat. No. | Tips | Overall Length |
|----------|--|----------------|
| 32581 | #0 & #00 Phillips and 1/8" & 3/32" Slotted | 6.5" (165 mm) |
| 32585 | T7, T8, T10 and T15 tamper-proof TORX® | 6.5" (165 mm) |



Completely hollow handle for unlimited threaded rod lengths

- Wrench assist for additional torque
- Magnetic feature helps grab hex nuts securely

**HEAVY-DUTY
NUT DRIVERS**



| Cat. No. | Hex Sizes | Color Code | Overall Length |
|----------|---|------------|------------------|
| 635-1/4 | 1/4" | Red | 9" (229 mm) |
| 635-5/16 | 5/16" | Yellow | |
| 635-3/8 | 3/8" | Blue | |
| 635-7/16 | 7/16" | Brown | |
| 635-1/2 | 1/2" | Red | 9.4" (239 mm) |
| 635-9/16 | 9/16" | Orange | |
| Sets | | | |
| 635-4 | 4-Piece set includes 1/4", 5/16", 3/8" & 7/16" hex | | |
| 635-6 | 6-Piece set includes 1/4", 5/16", 3/8", 7/16", 1/2" & 9/16" hex | | |



Multiple sizes in one convenient tool

- Interchangeable hex sizes are available in two models
- Heavy duty handles and shafts exceed the torque performance of regular nut drivers
- Wrench assist feature for additional torque

**MULTI-NUT
DRIVERS**

| Cat. No. | Hex Sizes | Overall Length |
|----------|---|----------------|
| 32800 | 3/16", 1/4", 5/16", 3/8", 7/16" & 9/16" | 9.5" (241 mm) |
| 32801 | 3/16", 1/4", 5/16", 3/8" & 9/16" | 9.1" (231 mm) |



Ratcheting mechanism allows user to work faster and with more efficiency

- Includes four different screwdriver bits and 1/4" and 5/16" nut drivers

| Cat. No. | Tips | Hex Sizes | Overall Length |
|----------|---|-----------|----------------|
| 32593 | #1 & #2 Phillips and 1/4" & 3/16" Slotted | 1/4" | 3.5" |
| 32594 | #1 & #2 Square, #2 Phillips & 3/16" Slotted | & 5/16" | (63.5 mm) |

Fixed shaft and internal storage compartment for the bits so they stay with the driver

- These drivers include 14 different screwdriver tips plus a 1/4" nut driver

| Cat. No. | Description | Tips | Overall Length |
|----------|---------------------|--|----------------|
| 32290 | 15-in-1 Classic | #0, #1, #2, #3 Phillips; #1 and #2 Square; #1 and #2 Combo; #10, #15, #20, #25 Torx; 4 and 6 MM Slotted; 1/4" Hex | |
| 32291 | 15-in-1 Tamperproof | #10, #15, #20, #25, #27, #30 Torx-Pins; 1/8", 9/64", 5/32", 3/16" Hex-Pins; #6, #8, #10, #12 Spanners; 1/4" Hex | 9" (229 mm) |
| 32292 | 15-in-1 HVAC | #0, #1, #2 and #3 Phillips; #1 and #2 Square; Schrader Valve Insertion and Core Removal Bits; #10, #15, #20 and #25 Torx; 4 and 6 MM Slotted; 1/4" Hex | |

Adjust to the length you need on the fly

Carry fewer tools with a more versatile screwdriver. The shafts adjust anywhere from 4" to 8" (10 – 20 cm) for numerous length choices.

- Removable and reversible shafts with a different tip on each end
- Proprietary system securely holds the blade in place – as durable as a traditional Klein fixed blade screwdriver
- Use on internet boxes, telecomm boxes, generators and more

| Cat. No. | Description | Tips |
|--------------------------------|-------------------------------|---|
| 32708 | Adjustable Length Screwdriver | #1 & #2 Square |
| 32751 | Adjustable Length Screwdriver | #2 Phillips & 1/4" Slotted |
| Sets Replacement Blades | | |
| 32618 | Replacement Blades | #2 Phillips and 1/4" Slotted |
| 32709 | Replacement Blades | #1 & #2 Square |
| 32713 | Replacement Blades | #1 Phillips & 3/16" Slotted |
| 32715 | Replacement Blades (3-Pack) | #2 Phillips & 1/4" Slotted #1 Phillips & 3/16" Slotted #1 & #2 Square |
| 32619 | Handle only | N/A |

6-IN-1 RATCHETING STUBBY SCREWDRIVERS

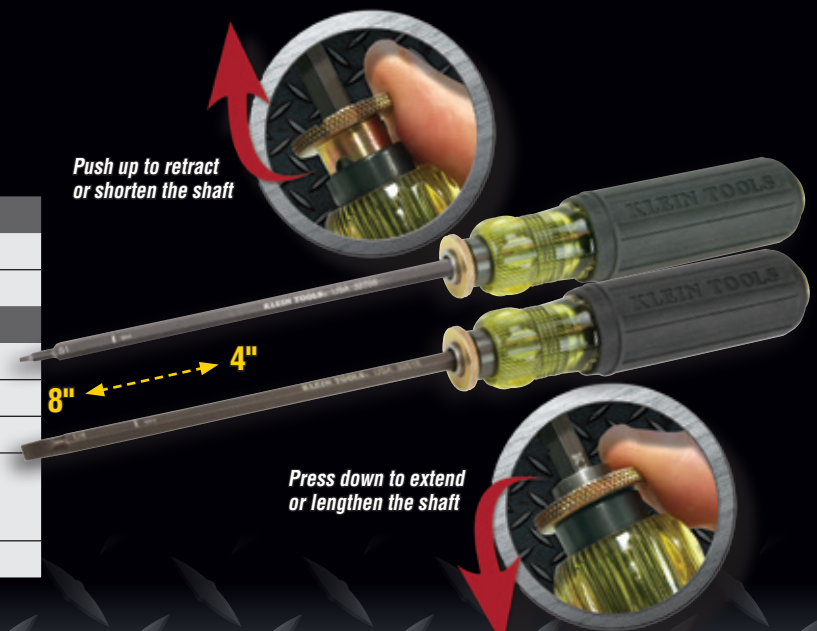


15-IN-1 SCREWDRIVERS

Internal storage for screwdriver bits



ADJUSTABLE LENGTH SCREWDRIVERS



KLEIN TOOLS
EST. 1857
For Professionals... Since 1857™

See our complete line of Drivers

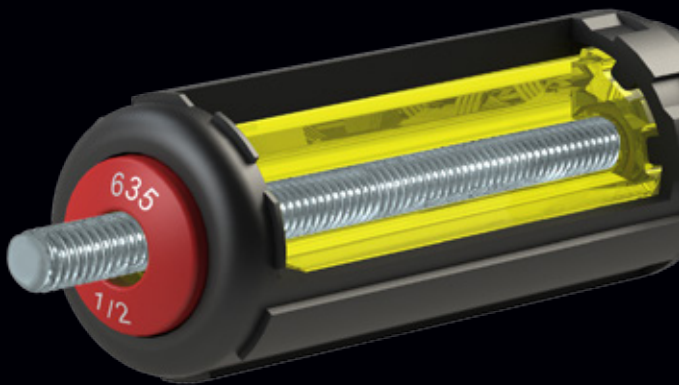
www.kleintools.com/catalog/drivers



© 2016 Klein Tools, Inc.
Lincolnshire, IL 60069-1418
Rev. 10/17 96454

DRIVERS

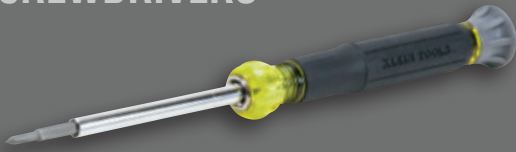
SCREW, NUT, MULTI & ADJUSTABLE



As the tradesperson's needs change, so do Klein's products. The latest additions to our line of drivers feature added functionality to increase productivity and decrease the number of tools on the belt or in the bag.



4-IN-1 ELECTRONICS SCREWDRIVERS



Four different bits in one tool

- Rotating cap for optimum and precise control
- Heat-treated precision machined tip for greater strength

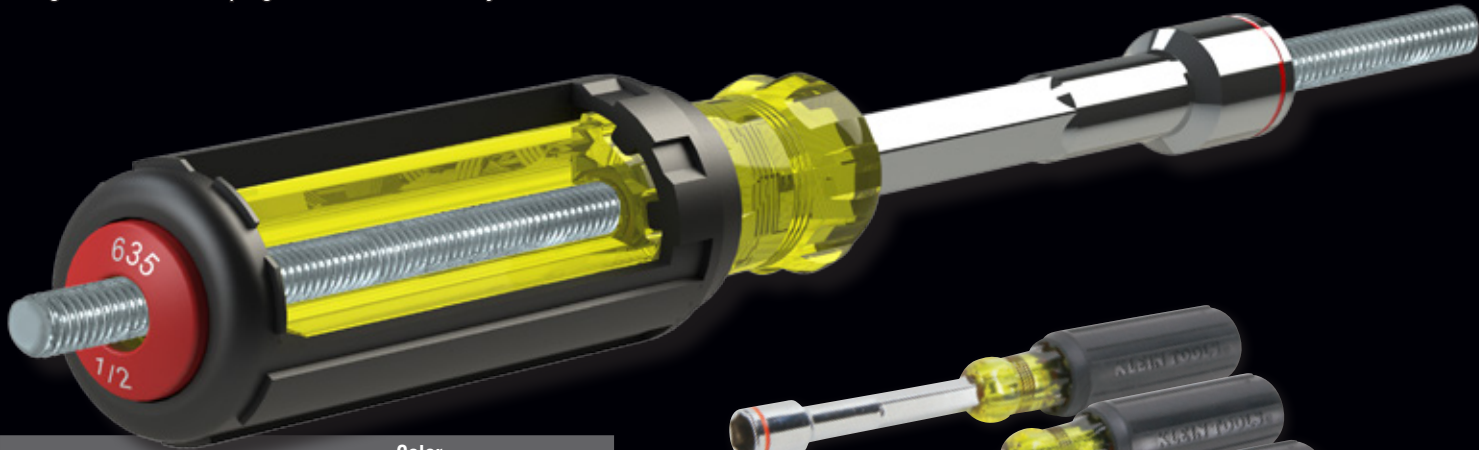
| Cat. No. | Tips | Overall Length |
|----------|--|----------------|
| 32581 | #0 & #00 Phillips and 1/8" & 3/32" Slotted | 6.5" (165 mm) |
| 32585 | T7, T8, T10 and T15 tamper-proof TORX ® | 6.5" (165 mm) |



Completely hollow handle for unlimited threaded rod lengths

- Wrench assist for additional torque
- Magnetic feature helps grab hex nuts securely

**HEAVY-DUTY
NUT DRIVERS**



| Cat. No. | Hex Sizes | Color Code | Overall Length |
|----------|---|------------|------------------|
| 635-1/4 | 1/4" | Red | 9" (229 mm) |
| 635-5/16 | 5/16" | Yellow | |
| 635-3/8 | 3/8" | Blue | |
| 635-7/16 | 7/16" | Brown | |
| 635-1/2 | 1/2" | Red | 9.4" (239 mm) |
| 635-9/16 | 9/16" | Orange | |
| Sets | | | |
| 635-4 | 4-Piece set includes 1/4", 5/16", 3/8" & 7/16" hex | | |
| 635-6 | 6-Piece set includes 1/4", 5/16", 3/8", 7/16", 1/2" & 9/16" hex | | |



Multiple sizes in one convenient tool

- Interchangeable hex sizes are available in two models
- Heavy duty handles and shafts exceed the torque performance of regular nut drivers
- Wrench assist feature for additional torque

| Cat. No. | Hex Sizes | Overall Length |
|----------|---|----------------|
| 32800 | 3/16", 1/4", 5/16", 3/8", 7/16" & 9/16" | 9.5" (241 mm) |
| 32801 | 3/16", 1/4", 5/16", 3/8" & 9/16" | 9.1" (231 mm) |

**MULTI-NUT
DRIVERS**



Ratcheting mechanism allows user to work faster and with more efficiency

- Includes four different screwdriver bits and 1/4" and 5/16" nut drivers

| Cat. No. | Tips | Hex Sizes | Overall Length |
|----------|---|-----------|----------------|
| 32593 | #1 & #2 Phillips and 1/4" & 3/16" Slotted | 1/4" | 3.5" |
| 32594 | #1 & #2 Square, #2 Phillips & 3/16" Slotted | & 5/16" | (63.5 mm) |

Fixed shaft and internal storage compartment for the bits so they stay with the driver

- These drivers include 14 different screwdriver tips plus a 1/4" nut driver

| Cat. No. | Description | Tips | Overall Length |
|----------|---------------------|--|----------------|
| 32290 | 15-in-1 Classic | #0, #1, #2, #3 Phillips; #1 and #2 Square; #1 and #2 Combo; #10, #15, #20, #25 Torx; 4 and 6 MM Slotted; 1/4" Hex | |
| 32291 | 15-in-1 Tamperproof | #10, #15, #20, #25, #27, #30 Torx-Pins; 1/8", 9/64", 5/32", 3/16" Hex-Pins; #6, #8, #10, #12 Spanners; 1/4" Hex | 9" (229 mm) |
| 32292 | 15-in-1 HVAC | #0, #1, #2 and #3 Phillips; #1 and #2 Square; Schrader Valve Insertion and Core Removal Bits; #10, #15, #20 and #25 Torx; 4 and 6 MM Slotted; 1/4" Hex | |

Adjust to the length you need on the fly

Carry fewer tools with a more versatile screwdriver. The shafts adjust anywhere from 4" to 8" (10 – 20 cm) for numerous length choices.

- Removable and reversible shafts with a different tip on each end
- Proprietary system securely holds the blade in place – as durable as a traditional Klein fixed blade screwdriver
- Use on internet boxes, telecomm boxes, generators and more

| Cat. No. | Description | Tips |
|--------------------------------|-------------------------------|---|
| 32708 | Adjustable Length Screwdriver | #1 & #2 Square |
| 32751 | Adjustable Length Screwdriver | #2 Phillips & 1/4" Slotted |
| Sets Replacement Blades | | |
| 32618 | Replacement Blades | #2 Phillips and 1/4" Slotted |
| 32709 | Replacement Blades | #1 & #2 Square |
| 32713 | Replacement Blades | #1 Phillips & 3/16" Slotted |
| 32715 | Replacement Blades (3-Pack) | #2 Phillips & 1/4" Slotted #1 Phillips & 3/16" Slotted #1 & #2 Square |
| 32619 | Handle only | N/A |

6-IN-1 RATCHETING STUBBY SCREWDRIVERS



15-IN-1 SCREWDRIVERS

Internal storage for screwdriver bits



ADJUSTABLE LENGTH SCREWDRIVERS

