

SNAP²IT[®] MC Cable Connectors

Largest Line. Widest Cable Ranges. Fastest Installation.



**SAVE
17 seconds
per connector**

**LISTED
SNAP²IT[®]
CONNECTORS FOR
NEW MC-PCS and
MC-PCS HCF CABLE
...lighting & low voltage
circuits in same
cable**

4010AST
1/2" KO

5010AST
1/2" KO

4110ST

414110ST

505010AST
3/4" KO

Arlington's zinc diecast SNAP²IT[®] fittings are the *easiest to insert* snap-on connectors. And they handle the widest variety of cables!

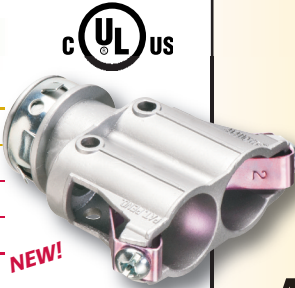
- **Easiest installation**
New and improved design delivers the easiest cable insertion.
- **Widest total cable ranges**
Our Snap²IT[®] connector line accommodates cables from 1/4" to 3/4".
- **Widest variety of cables**
For AC, MC, HCF, MC continuous corrugated aluminum cable, MCI-A cables (steel and aluminum), AC90 and ACG90.

These Snap2It connectors fit the NEW MC-PCS and MC-PCS HCF CABLE (lighting and low voltage circuits in same cable) and offer the GREATEST TIME-SAVINGS.

- Super-secure installation in new work or retrofit
- Connector is removable, reusable
- Fully assembled – Ready to use
- Concrete-tight when taped

Easiest cable insertion.
NO TOOLS!
Secure hold.

| CATALOG NUMBER | UPC/DCI/NAED MFG #01 8997 | DESCRIPTION | CABLE OUTSIDE DIA (OD) | UNIT/STD PKG |
|----------------|---------------------------|--|------------------------|--------------|
| 4010AST | 40355 | Snap in, 1/2" KO w insulated throat | .405 to .610 | 50/500 |
| 5010AST | 00517 | Snap in, 1/2" KO w insulated throat | .580 to .780 | 25/250 |
| 505010AST | 00520 | Duplex Snap in, 3/4" KO w insulated throat | (2) .590 to .820 | 25/25 |
| 4110ST | 00728 | Snap in, 1/2" KO | .525 to .705 | 50/500 |
| 414110ST | 00729 | Duplex Snap in, 1/2" KO | (2) .525 to .640 | 25/100 |
| 4141107ST | 22095 | Duplex Snap in, 3/4" KO | (2) .525 to .690 | 25/25 |



4141107ST



Arlington
www.aifittings.com



SNAP2IT[®] MC Cable Connectors

Largest Line. Widest Cable Ranges. Fastest Installation.

Snap2It Connectors

with and without Insulated Throat and Angled Two-prong Clip

- **Easy installation** snap cable into fitting; assembly into box...No tools!
- Angled clip locks onto MC cable No pullout
- **Removal, reusable**
From cable: Loosen screw on top of connector. Pull cable out.
From box: Slip screwdriver under Snap-Tite ring and twist.

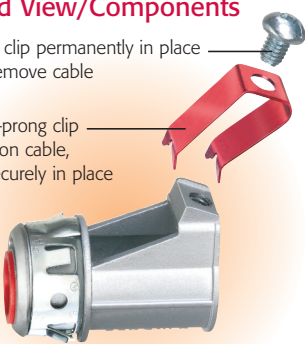


4010AST Exploded View/Components

Screw holds clip permanently in place
Loosen to remove cable

Angled, two-prong clip locks down on cable, holding it securely in place

Insulated throat



Check that the cable's outer diameter (OD) listed by the cable manufacturer is within the OD cable range listed for the fitting. The cable jacket should never go through the end stop (of fitting).

*CSA Listed w/ anti-short bushing ONLY



Arlington

1 Stauffer Industrial Park
Scranton, PA 18517
800/233.4717
Fax 570/562.0646
www.aifittings.com

| CATALOG NUMBER | UPC/DCI/NAED MFG. #01 8997 | CABLE (OD) OUTSIDE DIAMETER | CABLE TYPE | CABLE SIZES | UNIT PKG | STD PKG |
|--------------------------------|----------------------------|-----------------------------|---|--|----------|---------|
| 4010AST 1/2" KO | 40355 | .405 to .610 | For steel and aluminum: MC/HCF/AC NEW MC-PCS MC-PCS HCF | 14/2, 14/3, 14/4, 12/2, 12/3, 12/4, | 50 | 500 |
| | | .405 to .580 | MCI-A | 10/2, 10/3 | | |
| | | .460 to .550 | AC90, ACG90 | | | |
| | | | Flexible metal conduit (regular and reduced wall) | 3/8" Flex* .560 to .610 | | |
| 5010AST 1/2" KO | 00517 | .580 to .780 | For steel and aluminum: MC/HCF/AC NEW MC-PCS MC-PCS HCF | 10/3, 10/4, 8/2, 8/3, 8/4 6/2, 6/3 | 25 | 250 |
| | | 5010AST .580 to .780 | MCI-A | | | |
| | | 505010ST .590 to .820 | | | | |
| | | .650 to .850 | AC90, ACG90 | 10/3, 10/4, 8/2, 8/3 | | |
| 505010AST Duplex 3/4" KO | 50720 | | Flexible metal conduit (regular and reduced wall) | 1/2" Flex* .860 to .920 | 25 | 25 |

WITH INSULATED THROAT

| | | | | | | |
|--------------------------------|-------|------------------------|---|---|----|-----|
| 4110ST 1/2" KO | 00728 | .525 to .705 | For steel and aluminum: MC/HCF/AC NEW MC-PCS MC-PCS HCF | 14/3, 14/4, 12/2, 12/3, 12/4, 10/2, 10/3, | 50 | 500 |
| | | 4110ST .525 to .690 | MCI-A | 10/4 (4110ST only) | | |
| | | 414110ST .525 to .625 | | | | |
| | | 4141107ST .525 to .690 | | | | |
| | | .550 to .650 | AC90, ACG90 | | | |
| 414110ST 1/2" KO | 00729 | (2) .525 to .640 | Flexible metal conduit (regular and reduced wall) | 3/8" Flex* .560 to .610 | 25 | 100 |
| | | (2) .525 to .690 | | | | |
| 4141107ST Duplex 3/4" KO | 22095 | | | | 25 | 25 |

DISTRIBUTED BY

SNAP²IT[®] MC Cable Connectors

Largest Line. Widest Cable Ranges. Fastest Installation.



**SAVE
17 seconds
per connector**

**LISTED
SNAP²IT[®]
CONNECTORS FOR
NEW MC-PCS and
MC-PCS HCF CABLE
...lighting & low voltage
circuits in same
cable**

4010AST
1/2" KO

5010AST
1/2" KO

4110ST

414110ST

505010AST
3/4" KO

Arlington's zinc diecast SNAP²IT[®] fittings are the *easiest to insert* snap-on connectors. And they handle the widest variety of cables!

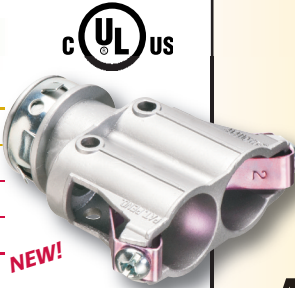
- **Easiest installation**
New and improved design delivers the easiest cable insertion.
- **Widest total cable ranges**
Our Snap²IT[®] connector line accommodates cables from 1/4" to 3/4".
- **Widest variety of cables**
For AC, MC, HCF, MC continuous corrugated aluminum cable, MCI-A cables (steel and aluminum), AC90 and ACG90.

These Snap2It connectors fit the NEW MC-PCS and MC-PCS HCF CABLE (lighting and low voltage circuits in same cable) and offer the GREATEST TIME-SAVINGS.

- Super-secure installation in new work or retrofit
- Connector is removable, reusable
- Fully assembled – Ready to use
- Concrete-tight when taped

Easiest cable insertion.
NO TOOLS!
Secure hold.

| CATALOG NUMBER | UPC/DCI/NAED MFG #01 8997 | DESCRIPTION | CABLE OUTSIDE DIA (OD) | UNIT/STD PKG |
|----------------|---------------------------|--|------------------------|--------------|
| 4010AST | 40355 | Snap in, 1/2" KO w insulated throat | .405 to .610 | 50/500 |
| 5010AST | 00517 | Snap in, 1/2" KO w insulated throat | .580 to .780 | 25/250 |
| 505010AST | 00520 | Duplex Snap in, 3/4" KO w insulated throat | (2) .590 to .820 | 25/25 |
| 4110ST | 00728 | Snap in, 1/2" KO | .525 to .705 | 50/500 |
| 414110ST | 00729 | Duplex Snap in, 1/2" KO | (2) .525 to .640 | 25/100 |
| 4141107ST | 22095 | Duplex Snap in, 3/4" KO | (2) .525 to .690 | 25/25 |



4141107ST



Arlington
www.aifittings.com



SNAP2IT[®] MC Cable Connectors

Largest Line. Widest Cable Ranges. Fastest Installation.

Snap2It Connectors

with and without Insulated Throat and Angled Two-prong Clip

- **Easy installation** snap cable into fitting; assembly into box...No tools!
- **Angled clip** locks onto MC cable No pullout
- **Removal, reusable**
From cable: Loosen screw on top of connector. Pull cable out.
From box: Slip screwdriver under Snap-Tite ring and twist.

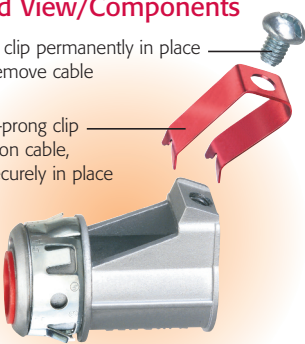


4010AST Exploded View/Components

Screw holds clip permanently in place
Loosen to remove cable

Angled, two-prong clip locks down on cable, holding it securely in place

Insulated throat



Check that the cable's outer diameter (OD) listed by the cable manufacturer is within the OD cable range listed for the fitting. The cable jacket should never go through the end stop (of fitting).

*CSA Listed w/ anti-short bushing ONLY



Arlington

1 Stauffer Industrial Park
Scranton, PA 18517
800/233.4717
Fax 570/562.0646
www.aifittings.com

| CATALOG NUMBER | UPC/DCI/NAED MFG. #01 8997 | CABLE (OD) OUTSIDE DIAMETER | CABLE TYPE | CABLE SIZES | UNIT PKG | STD PKG |
|--------------------------------|----------------------------|-----------------------------|---|--|----------|---------|
| 4010AST 1/2" KO | 40355 | .405 to .610 | For steel and aluminum: MC/HCF/AC NEW MC-PCS MC-PCS HCF | 14/2, 14/3, 14/4, 12/2, 12/3, 12/4, | 50 | 500 |
| | | .405 to .580 | MCI-A | 10/2, 10/3 | | |
| | | .460 to .550 | AC90, ACG90 | | | |
| | | | Flexible metal conduit (regular and reduced wall) | 3/8" Flex* .560 to .610 | | |
| 5010AST 1/2" KO | 00517 | .580 to .780 | For steel and aluminum: MC/HCF/AC NEW MC-PCS MC-PCS HCF | 10/3, 10/4, 8/2, 8/3, 8/4 6/2, 6/3 | 25 | 250 |
| | | 5010AST .580 to .780 | MCI-A | | | |
| | | 505010ST .590 to .820 | | | | |
| | | .650 to .850 | AC90, ACG90 | 10/3, 10/4, 8/2, 8/3 | | |
| 505010AST Duplex 3/4" KO | 50720 | | Flexible metal conduit (regular and reduced wall) | 1/2" Flex* .860 to .920 | 25 | 25 |

WITH INSULATED THROAT

| | | | | | | |
|--------------------------------|-------|------------------------|---|---|----|-----|
| 4110ST 1/2" KO | 00728 | .525 to .705 | For steel and aluminum: MC/HCF/AC NEW MC-PCS MC-PCS HCF | 14/3, 14/4, 12/2, 12/3, 12/4, 10/2, 10/3, | 50 | 500 |
| | | 4110ST .525 to .690 | MCI-A | 10/4 (4110ST only) | | |
| | | 414110ST .525 to .625 | | | | |
| | | 4141107ST .525 to .690 | | | | |
| | | .550 to .650 | AC90, ACG90 | | | |
| 414110ST 1/2" KO | 00729 | (2) .525 to .640 | Flexible metal conduit (regular and reduced wall) | 3/8" Flex* .560 to .610 | 25 | 100 |
| | | (2) .525 to .690 | | | | |
| 4141107ST Duplex 3/4" KO | 22095 | | | | 25 | 25 |

DISTRIBUTED BY