

E26 4" Trim Series

DESCRIPTION

Baffle trim in the 4" trim family for use in recessed downlighting.

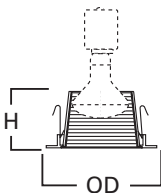
| | | |
|-------------|--|------|
| Catalog # | | Type |
| Project | | |
| Comments | | Date |
| Prepared by | | |

SPECIFICATION FEATURES

- Metal Baffle
- Formed metal trim ring
- Friction clip retention

| Housings | Max Lamp Compatibility |
|----------|--|
| H99ICAT | 35W PAR20, 30W R20, (50W PAR20 with H1999 Socket Extender) |
| E4ICATSB | 50W PAR20, 30W R20 |
| E4TATSB | 50W PAR20, 40W R16, 50W R20 |
| E4RTATSB | |

Compatible with Halogen, Incandescent, LED* or CFL* lamps.



Dimensions:

H: 2-5/8" [67mm]

OD: 5" [129mm]

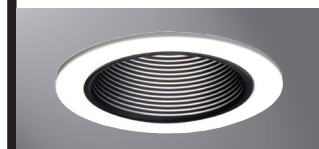
ORDERING INFORMATION

SAMPLE NUMBER: 4001WB

| Trim | Finish |
|-----------------------|--|
| 4010= 4" Metal Baffle | WB =White Baffle, White Trim BB =Black Baffle, White Trim |



4010WB
White Baffle,
White Trim



4010BB
Black Baffle,
White Trim

4010

4-Inch Metal Baffle



For use in Halo listed housings.

E26 4" Trim Series

DESCRIPTION

Baffle trim in the 4" trim family for use in recessed downlighting.

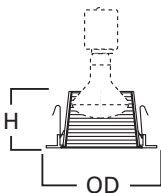
| | | |
|-------------|--|------|
| Catalog # | | Type |
| Project | | |
| Comments | | Date |
| Prepared by | | |

SPECIFICATION FEATURES

- Metal Baffle
- Formed metal trim ring
- Friction clip retention

| Housings | Max Lamp Compatibility |
|----------|--|
| H99ICAT | 35W PAR20, 30W R20, (50W PAR20 with H1999 Socket Extender) |
| E4ICATSB | 50W PAR20, 30W R20 |
| E4TATSB | 50W PAR20, 40W R16, 50W R20 |
| E4RTATSB | |

Compatible with Halogen, Incandescent, LED* or CFL* lamps.



Dimensions:

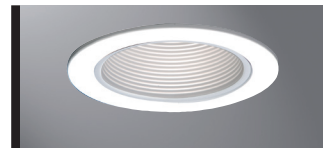
H: 2-5/8" [67mm]

OD: 5" [129mm]

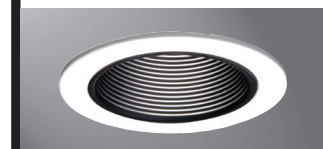
ORDERING INFORMATION

SAMPLE NUMBER: 4001WB

| Trim | Finish |
|-----------------------|--|
| 4010= 4" Metal Baffle | WB =White Baffle, White Trim BB =Black Baffle, White Trim |



4010WB
White Baffle,
White Trim



4010BB
Black Baffle,
White Trim

4010

4-Inch Metal Baffle



For use in Halo listed housings.