

	Cu. In. Volume	Catalog Number	Component Description	Exterior Dimensions			UPC# 85339	Std. Pkg. Qty.	Std. Wt. (lb.)
				D	W	H			
Nail-On	94.0	5305-NK	Angled mid-nails, Speed Klamps™ - factory installed	3-9/16	9-5/16	3-3/4	18001	6	9
Nail-On with Bar	94.0	5305-NBK	Angled mid-nails, adjustable stabilizing bar, Speed Klamps™ - factory installed	3-9/16	9-5/16	3-3/4	18002	6	10
"Z" Hanger with Bar	94.0	5305-Z4BK	1/2" offset, "Z" hanger, adjustable stabilizing bar, Speed Klamps™ - factory installed	3-9/16	9-5/16	3-3/4	18003	6	12
Low Voltage Partition		Catalog Number	Component Description				UPC# 85339	Std. Pkg. Qty.	Std. Wt. (lb.)
		LVP-1	Low voltage divider plate for use with 2302, 3303, 4304, 5305 Series and 9314 only. See 2008 NEC 800.133(A)(1)(c).				80000	50*	3

* Consists of ten (10) packages of five (5) pieces each.

All dimensions are in inches unless otherwise noted.
See page 7 for Attachment Coding suffix descriptions.

 Flush-Device Box
UL File No. E30594

Competitive Cross Reference

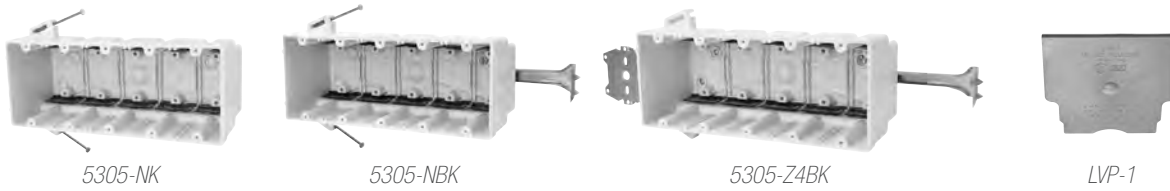
Fiberglass Outlet Boxes



ALLIED
MOULDED
PRODUCTS, Inc.

fiberglassBOX™: Premium Series “Hard Box” Fiberglass Boxes continued

Allied Moulded	Carlton® PH (Union Phenolic)	Carlton® PC Black Polycarbonate	Carlton® PVC (Zip Blue)	Carlton® PVC (SuperBlue®)	Cantex® (EZ BOX®)	Pass & Seymour (Slater®)
3300-Z4K	N/A	N/A	N/A	N/A	N/A	N/A
3303-2Z4	N/A	N/A	N/A	N/A	N/A	N/A
3303-2Z4K	N/A	N/A	N/A	N/A	N/A	N/A
3303-N	1063/C	N/A	N/A	BH353A	N/A	S354RAC
3303-NB	N/A	N/A	N/A	N/A	N/A	N/A
3303-NBK	N/A	N/A	N/A	N/A	N/A	N/A
3303-NK	1063/C	N/A	N/A	BH353A	EZ74TN	S354RAC
3303-SS	1063-CS	N/A	N/A	BH353S	N/A	S354RACS
3303-SSK	1063-CS	N/A	N/A	BH353S	EZ74TNZ	S354RACS
3303-Z4	N/A	N/A	SB357	N/A	N/A	S354S50AC
3303-Z4K	N/A	N/A	SB357	N/A	N/A	S354S50AC
4300-2Z2	2004-238/2004-238-02	460-LB	N/A	N/A	N/A	S468S50AC
4300-2Z2K	2004-238/2004-238-02	460-LB	N/A	N/A	N/A	N/A
4300-N	2004	N/A	B455A	BH464A	EZ55QNB	S468RAC
4300-NB	7074BH/2004BH	460-SB	B455AH	N/A	EZ55QNB	N/A
4300-NBK	7074BH/2004BH	460-SB	B455AH	N/A	EZ55QNB	N/A
4300-NK	2004	N/A	B455A	BH464A	EZ55QNB	S468RAC
4300-SS	N/A	N/A	N/A	BH464S	EZ55QNBZ	S468RACS
4300-SSB	N/A	N/A	N/A	N/A	EZ55QNBZ	N/A
4300-SSBK	N/A	N/A	N/A	N/A	EZ55QNBZ	N/A
4300-SSK	N/A	N/A	N/A	BH464S	EZ55QNBZ	S468RACS
4300-Z2	N/A	N/A	N/A	N/A	N/A	N/A
4300-Z2B	N/A	N/A	N/A	N/A	N/A	N/A
4300-Z2BK	N/A	N/A	N/A	N/A	N/A	N/A
4300-Z2K	N/A	N/A	N/A	N/A	N/A	N/A
4300-Z4	N/A	N/A	N/A	N/A	N/A	N/A
4300-Z4K	N/A	N/A	N/A	N/A	N/A	N/A
4304-2Z4	N/A	N/A	N/A	N/A	N/A	N/A
4304-2Z4K	N/A	N/A	N/A	N/A	N/A	N/A
4304-N	N/A	N/A	N/A	BH464A	N/A	N/A
4304-NB	N/A	N/A	N/A	N/A	N/A	N/A
4304-NBK	N/A	N/A	N/A	N/A	N/A	N/A
4304-NK	N/A	N/A	N/A	BH464A	N/A	N/A
4304-Z4B	N/A	N/A	N/A	N/A	N/A	N/A
4304-Z4BK	N/A	N/A	N/A	N/A	N/A	N/A
5305-NBK	N/A	N/A	N/A	N/A	N/A	N/A
5305-NK	N/A	N/A	N/A	N/A	N/A	N/A
5305-Z4BK	N/A	N/A	N/A	N/A	N/A	N/A
9301-E	7060	108E	B108R	N/A	EZ08SF	N/A
9303-H	9050-702	N/A	B108B	N/A	EZ08SB	N/A
9304	3060	N/A	N/A	N/A	N/A	N/A
9304-G	N/A	N/A	N/A	N/A	N/A	N/A
9305	3030	N/A	N/A	N/A	N/A	N/A
9305-G	N/A	N/A	N/A	N/A	N/A	N/A
9305-GK	3030-02-40	N/A	N/A	N/A	N/A	N/A
9305-K	3030PC	N/A	N/A	N/A	N/A	N/A
9305-S	3030-902/3080-9	N/A	N/A	BH614R	N/A	N/A
9305-SG	3020-9-40/3020-902-40	N/A	N/A	BH614P	N/A	N/A
9305-SGK	3020-9-40/3020-902-40	N/A	N/A	BH614P	N/A	N/A
9305-SK	3030-902/3080-9	N/A	N/A	BH614R	N/A	N/A



	Cu. In. Volume	Catalog Number	Component Description	Exterior Dimensions			UPC# 85339	Std. Pkg. Qty.	Std. Wt. (lb.)
				D	W	H			
Nail-On	94.0	5305-NK	Angled mid-nails, Speed Klamps™ - factory installed	3-9/16	9-5/16	3-3/4	18001	6	9
	94.0	5305-NBK	Angled mid-nails, adjustable stabilizing bar, Speed Klamps™ - factory installed	3-9/16	9-5/16	3-3/4	18002	6	10
"Z" Hanger with Bar	94.0	5305-Z4BK	1/2" offset, "Z" hanger, adjustable stabilizing bar, Speed Klamps™ - factory installed	3-9/16	9-5/16	3-3/4	18003	6	12
Low Voltage Partition									

All dimensions are in inches unless otherwise noted.
See page 7 for Attachment Coding suffix descriptions.

 Flush-Device Box
UL File No. E30594

Competitive Cross Reference

Fiberglass Outlet Boxes



ALLIED
MOULDED
PRODUCTS, Inc.

fiberglassBOX™: Premium Series “Hard Box” Fiberglass Boxes continued

Allied Moulded	Carlton® PH (Union Phenolic)	Carlton® PC Black Polycarbonate	Carlton® PVC (Zip Blue)	Carlton® PVC (SuperBlue®)	Cantex® (EZ BOX®)	Pass & Seymour (Slater®)
3300-Z4K	N/A	N/A	N/A	N/A	N/A	N/A
3303-2Z4	N/A	N/A	N/A	N/A	N/A	N/A
3303-2Z4K	N/A	N/A	N/A	N/A	N/A	N/A
3303-N	1063/C	N/A	N/A	BH353A	N/A	S354RAC
3303-NB	N/A	N/A	N/A	N/A	N/A	N/A
3303-NBK	N/A	N/A	N/A	N/A	N/A	N/A
3303-NK	1063/C	N/A	N/A	BH353A	EZ74TN	S354RAC
3303-SS	1063-CS	N/A	N/A	BH353S	N/A	S354RACS
3303-SSK	1063-CS	N/A	N/A	BH353S	EZ74TNZ	S354RACS
3303-Z4	N/A	N/A	SB357	N/A	N/A	S354S50AC
3303-Z4K	N/A	N/A	SB357	N/A	N/A	S354S50AC
4300-2Z2	2004-238/2004-238-02	460-LB	N/A	N/A	N/A	S468S50AC
4300-2Z2K	2004-238/2004-238-02	460-LB	N/A	N/A	N/A	N/A
4300-N	2004	N/A	B455A	BH464A	EZ55QNB	S468RAC
4300-NB	7074BH/2004BH	460-SB	B455AH	N/A	EZ55QNB	N/A
4300-NBK	7074BH/2004BH	460-SB	B455AH	N/A	EZ55QNB	N/A
4300-NK	2004	N/A	B455A	BH464A	EZ55QNB	S468RAC
4300-SS	N/A	N/A	N/A	BH464S	EZ55QNBZ	S468RACS
4300-SSB	N/A	N/A	N/A	N/A	EZ55QNBZ	N/A
4300-SSBK	N/A	N/A	N/A	N/A	EZ55QNBZ	N/A
4300-SSK	N/A	N/A	N/A	BH464S	EZ55QNBZ	S468RACS
4300-Z2	N/A	N/A	N/A	N/A	N/A	N/A
4300-Z2B	N/A	N/A	N/A	N/A	N/A	N/A
4300-Z2BK	N/A	N/A	N/A	N/A	N/A	N/A
4300-Z2K	N/A	N/A	N/A	N/A	N/A	N/A
4300-Z4	N/A	N/A	N/A	N/A	N/A	N/A
4300-Z4K	N/A	N/A	N/A	N/A	N/A	N/A
4304-2Z4	N/A	N/A	N/A	N/A	N/A	N/A
4304-2Z4K	N/A	N/A	N/A	N/A	N/A	N/A
4304-N	N/A	N/A	N/A	BH464A	N/A	N/A
4304-NB	N/A	N/A	N/A	N/A	N/A	N/A
4304-NBK	N/A	N/A	N/A	N/A	N/A	N/A
4304-NK	N/A	N/A	N/A	BH464A	N/A	N/A
4304-Z4B	N/A	N/A	N/A	N/A	N/A	N/A
4304-Z4BK	N/A	N/A	N/A	N/A	N/A	N/A
5305-NBK	N/A	N/A	N/A	N/A	N/A	N/A
5305-NK	N/A	N/A	N/A	N/A	N/A	N/A
5305-Z4BK	N/A	N/A	N/A	N/A	N/A	N/A
9301-E	7060	108E	B108R	N/A	EZ08SF	N/A
9303-H	9050-702	N/A	B108B	N/A	EZ08SB	N/A
9304	3060	N/A	N/A	N/A	N/A	N/A
9304-G	N/A	N/A	N/A	N/A	N/A	N/A
9305	3030	N/A	N/A	N/A	N/A	N/A
9305-G	N/A	N/A	N/A	N/A	N/A	N/A
9305-GK	3030-02-40	N/A	N/A	N/A	N/A	N/A
9305-K	3030PC	N/A	N/A	N/A	N/A	N/A
9305-S	3030-902/3080-9	N/A	N/A	BH614R	N/A	N/A
9305-SG	3020-9-40/3020-902-40	N/A	N/A	BH614P	N/A	N/A
9305-SGK	3020-9-40/3020-902-40	N/A	N/A	BH614P	N/A	N/A
9305-SK	3030-902/3080-9	N/A	N/A	BH614R	N/A	N/A