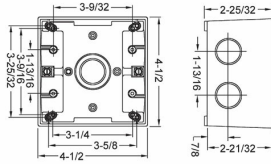


**TWO GANG BOXES - 2 IN. TO 2-5/8 IN. DEEP****2-5/8 in. Deep with Lugs - Five Threaded Outlets - 4-1/2 in. x 4-1/2 in.
N/A****D06**

Catalog #: 5389-0

APPLICATIONSFor use in branch circuit wiring in wet, damp, or dry locations
May be used as a weatherproof junction box, or as a housing for receptacles, switches, and GFCI's**PRODUCT FEATURES**

- Reinforced connector outlets
- State-of-the-art powder coat finish provides maximum weatherability and scratch resistance
- Eight box mounting options with detachable lugs
- Two closure plugs included
- Hubs accept all threaded fittings and threaded conduit
- Ground screw installed
- Multi-lingual instructions in each package
- Includes gasket and mounting hardware
- N/A

UL LISTED

File E195978

CSA

C22.2 No. 18

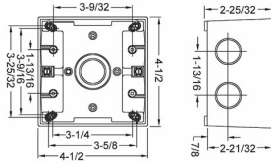
NEMA

3R Rated

GENERAL PRODUCT INFORMATION

Color: Gray

CONFIGURATIONNumber Of Outlets: 2
Gangs: 2**PRODUCT MEASUREMENTS**Depth: 2-5/8 in.
Outlet Size: 1 in.
Cubic Inches (cm³): 36.0 (589.9)
Wt. Ea. (Lbs.): 1.139**PACKAGING**Package Type: Shrink
Std. Pkg.: 9
Product UPC-A Labeled: Yes
Weight (Lbs. Per/C): 113.90
Ship Carton Length (in.): 16.19
Ship Carton Width (in.): 6.50
Ship Carton Height (in.): 8.50
Ctn Weight (Lbs.): 10.25
Pallet Qty: 810.00
UPC Number: 050169538906
I2of5: 50050169538901

**TWO GANG BOXES - 2 IN. TO 2-5/8 IN. DEEP****2-5/8 in. Deep with Lugs - Five Threaded Outlets - 4-1/2 in. x 4-1/2 in.
N/A****D06**

Catalog #: 5389-0

APPLICATIONSFor use in branch circuit wiring in wet, damp, or dry locations
May be used as a weatherproof junction box, or as a housing for receptacles, switches, and GFCI's**PRODUCT FEATURES**

- Reinforced connector outlets
- State-of-the-art powder coat finish provides maximum weatherability and scratch resistance
- Eight box mounting options with detachable lugs
- Two closure plugs included
- Hubs accept all threaded fittings and threaded conduit
- Ground screw installed
- Multi-lingual instructions in each package
- Includes gasket and mounting hardware
- N/A

UL LISTED

File E195978

CSA

C22.2 No. 18

NEMA

3R Rated

GENERAL PRODUCT INFORMATION

Color: Gray

CONFIGURATIONNumber Of Outlets: 2
Gangs: 2**PRODUCT MEASUREMENTS**Depth: 2-5/8 in.
Outlet Size: 1 in.
Cubic Inches (cm³): 36.0 (589.9)
Wt. Ea. (Lbs.): 1.139**PACKAGING**Package Type: Shrink
Std. Pkg.: 9
Product UPC-A Labeled: Yes
Weight (Lbs. Per/C): 113.90
Ship Carton Length (in.): 16.19
Ship Carton Width (in.): 6.50
Ship Carton Height (in.): 8.50
Ctn Weight (Lbs.): 10.25
Pallet Qty: 810.00
UPC Number: 050169538906
I2of5: 50050169538901