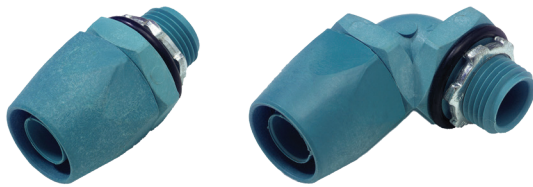


TECHNICAL DATA SHEET - INTERACTIVE PDF

Fittings, Series 6300 Non-metallic Liquid-tight Type A

For use with non-metallic Type A raceway

T&B Liquidtight Systems[®]



Glass filled reinforced thermoplastic components provide excellent durability in the most demanding applications for Type A conduit.

Certifications / Standards:



3-Part Specification End User Tools

Features:

- Trade sizes from ½" to 1 ¼" (16mm to 35mm)
- Straight and 90° elbow versions
- NPT threads
- Provided with a captive O-ring seal and locknut
- Ideal for use in highly corrosive environments

Applications:

- Designed to provide a liquid-tight connection between the fittings, conduits and enclosure wall
- Used to connect flexible liquid-tight Type A conduit to boxes or enclosures
- Typical applications include raceway for general purpose industrial and commercial construction, machine OEMs, panel builders, indoor and outdoor installations
- Liquid-tight applications against water, oils, cutting fluids, mild acids
- For use in electrical circuits up to 1,000 V

Conforms to:

- UL 514B, Fittings for Cable and Conduit
– File: E23018

Material / Finishes:

- Thermoplastic, glass reinforced body and gland
- Neoprene O-ring
- Case-hardened steel locknuts with teeth for vibration resistance - zinc plated

Series 6300 Non-metallic Type A Fitting

Product selection and approximate dimensions

Drawing	Part no.	Trade size			NPT thread	Inches			Millimeters			Weight	
		Inches	Metric	ISO BS EN	Size	A	B	C	A	B	C	lbs.	kg
	6302	½"	16 mm	20 mm	½"	1 ½"	1 11/16"	1 9/32"	38.1	42.9	0.079	0.10	0.05
	6303	¾"	21 mm	25 mm	¾"	1 ¾"	1 27/32"	5/8"	44.5	46.8	15.9	0.15	0.07
	6304	1"	27 mm	32 mm	1"	2 3/32"	2 9/32"	2 5/32"	53.2	23	19.8	0.23	0.10
	6305	1 ¼"	35 mm	40 mm	1 ¼"	2 21/32"	2 5/16"	1 1/16"	67.5	58.7	17.5	0.47	0.21
	6322	½"	16 mm	20 mm	½"	1 ½"	1 9/16"	1 9/32"	38.1	39.7	0.079	0.14	0.06
	6323	¾"	21 mm	25 mm	¾"	1 ¾"	1 ¾"	5/8"	44.5	44.5	15.9	0.23	0.11
	6324	1"	27 mm	32 mm	1"	2 3/32"	1 25/32"	2 5/32"	53.2	45.2	19.8	0.34	0.16
	6325-TB	1 ¼"	35 mm	40 mm	1 ¼"	2 21/32"	2 1/8"	1 1/16"	67.5	54.0	17.5	0.70	0.32

Note: Product must be installed in accordance with applicable national and local electrical codes.