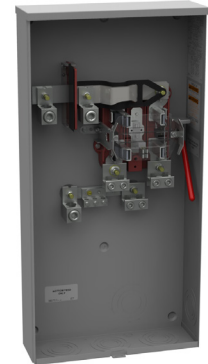


# Meter Mounting Equipment

Texas Deregulated Utilities

## TXU/Oncor Area

Description	Service Feed	Catalog Number
<b>150-200 amp   4 Terminal</b>		
150A .....4T .....OH.....		U7262-RL-TG
200A .....4T .....OH/UG.....		U7040-XL-TG
200A .....4T .....HD.....OH/UG.....		U9801-RXL
<b>200 amp   5 &amp; 7 Terminal</b>		
200A .....5T .....HD.....OH/UG.....		U9581-RL-QG
200A .....7T .....HD.....OH/UG.....		U9701-RXL
<b>320 amp   4 &amp; 7 Terminal</b>		
320A .....4T .....HD.....OH (w/o lugs).....		U4363-R
320A .....4T .....SWY .....UG (w/ lugs).....		U1797-O-K3L-K2L
320A .....7T .....SWY .....OH/UG (w/o lugs).....		U4013-X
<b>150 amp   4 Terminal   Horizontal Gang</b>		
150A .....3 Pos.....OH/UG.....		U9353-XL
150A .....4 Pos.....OH/UG.....		U9354-XL
<b>200 amp   4 Terminal   Horizontal Gang</b>		
200A .....2 Pos.....OH/UG.....		U1252-X-K1
200A .....3 Pos.....OH/UG.....		U1253-X
200A .....4 Pos.....OH/UG.....		U1254-X
200A .....5 Pos.....OH/UG.....		U1255-X
200A .....6 Pos.....OH/UG.....		U1256-X
<b>200 amp   4 Terminal   Mobile Home Pedestal</b>		
200A .....1 Pos.....UG Ped.....		U8567-O-200
200A .....2 Pos.....UG Ped (twin).....		U8667-O-2/200



U1797-O-K3L-K2L



U9701-RXL

## Accessories

Closing Plates	Suffix	Catalog #	Lug Kits	Suffix	Catalog #
Sml. Closing Plate	-XL*	A7551	350 Kcmil	1Ø	(3 per set)
Lg. Closing Plate	-X	A9064	Single Lug Kit	-K1	K1539
Adapter Plate	-RRL	S8324	Twin Lug Kit	-K2	K1350
<b>Hubs for Standard "RL" Opening</b>			Twin Lug Kit non-rotating		-K2L
1" Hub	-WL	A7514	K1350L		
1¼" Hub	-YL	A7515	600 Kcmil	1Ø	(3 per set)
1½" Hub	-ZL	A7516	Single Lug Kit	-K3	K1540
2" Hub	-DL	A7517	Single Lug Kit non-rotating		-K3L
2½" Hub	-EL	A7518	K1540L		
<b>Hubs for Large "R" Opening</b>			Twin Lug Kit	-K4	K1541
3" Hub	-F	A8110	350 Kcmil	3Ø	(4 per set)
3½" Hub	-G	A8111	Single Lug Kit	-K5	K3082
4" Hub	-H	A8112	Twin Lug Kit	-K6	K3442
<b>Fifth Terminals</b>			600 Kcmil	3Ø	(4 per set)
Fifth Terminal	Square Hole	K5T	Single Lug Kit	-K7	K3441
Fifth Terminal	Round Hole	5T8K2	Twin Lug Kit	-K8	K3083

Please consult serving utility for their requirements prior to ordering or installing, as specifications and approvals vary by utility, and may require local electrical inspector approval. All installations must be installed by a licensed electrician and must comply with all national and local codes, laws and regulations. Milbank reserves the right to make changes in specifications and features shown without notice or obligation.



# Texas / New Mexico Power - TNP & CVEC Area

Description	Service Feed	Catalog Number
<b>125 amp   4 &amp; 7 Terminal</b>		
125A.....4T.....	OH.....	U8435-RL-TG
125A.....4T.....	UG.....	U7588-XL
125A.....7T.....	OH.....	(1½" hub included) U8100-ZL
<b>200 amp   4 &amp; 5 Terminal</b>		
200A.....4T.....	OH.....	U7021-RL-TG
200A.....4T..... SWY.....	UG.....	U1980-O
200A.....5T.....	OH.....	U9580-RXL
<b>320 amp   4 Terminal</b>		
320A.....4T.....	OH.....	U1079-R
320A.....4T.....	OH/UG.....	U2448-X
<b>200/320 amp   7 Terminal   Medium &amp; Heavy Duty</b>		
200A.....7T..... MD.....	OH/UG.....	(Lever bypass - non jaw clamping) U7423-XL
200A.....7T..... HD.....	OH/UG.....	U9701-RRL
320A.....7T..... HD.....	OH/UG.....	U2594-X
<b>150/200 amp   4 &amp; 7 Terminal   Horizontal Gangs</b>		
2 Pos.....4T.....	OH/UG.....	U1232-X..... 150A..... 200A..... U1252-X-K1
3 Pos.....4T.....	OH/UG.....	U1233-RXL..... U1253-X-K3
4 Pos.....4T.....	OH/UG.....	U1234-RXL..... U1254-X-K3
5 Pos.....4T.....	OH/UG.....	U1235-RXL..... U1255-X-K4
6 Pos.....4T.....	OH/UG.....	U1236-RXL..... U1256-X-K4
4 Pos.....7T.....	OH/UG.....	U2734-XT



U1980-O



U7423-XL



U7021-DL-TG

## CoServ Area

Description	Service Feed	Catalog Number
<b>200 amp   4 Terminal</b>		
200A.....4T.....	OH/UG.....	U7040-XL-TG
<b>320 amp   4 Terminal</b>		
320A.....4T.....	OH/UG.....	(Lugs included) U4257-X-2/K2
<b>200 amp   7 Terminal   Medium &amp; Heavy Duty</b>		
200A.....7T..... HD.....	OH.....	(2" Hub included) U9700-DL-QG
200A.....7T..... MD.....	OH/UG.....	(Lever bypass - non jaw clamping) U3786-X-QG
<b>320 amp   7 Terminal   Heavy Duty</b>		
320A.....7T..... HD.....	OH/UG.....	(Lugs included) U4487-X-2/K6

## Pedernales Electric Cooperative (PEC)

Description	Service Feed	Catalog Number
<b>200 amp   4 Terminal</b>		
200A.....4T.....	OH.....	U7021-DL-TG
200A.....4T.....	UG.....	U7040-XL-TG
320A.....4T.....	OH.....	U1079-F-2/K3L-PEC
320A.....4T.....	UG.....	U1797-O-2/K3L-PEC

Please consult serving utility for their requirements prior to ordering or installing, as specifications and approvals vary by utility, and may require local electrical inspector approval. All installations must be installed by a licensed electrician and must comply with all national and local codes, laws and regulations. Milbank reserves the right to make changes in specifications and features shown without notice or obligation.



# AEP—West Area

Description	Service Feed	Catalog Number
<b>125-200 amp   4 Terminal</b>		
200A .....4T .....OH.....	U7040-RL-TG-KK-BLG-AEP	
200A .....4T .....OH.....	U7021-RL-TG-KK-BLG	
200A .....4T .....UG.....	U1980-O-KK-BLG-AEP	
200A .....4T .....OH.....	Alum*UAP7040-RL-TG-KK-BLG-AEP	
200A .....4T .....UG.....	Alum ... *UAP1980-O-KK-BLG-AEP	
200A .....4T .....OH/UG.....	U9801-RXL-QG-BLG-AEP	
200A .....4T .....OH/UG.....	Alum*UAP9801-RXL-QG-BLG-AEP	

## 200 amp | 5 & 7 Terminal | 3Ø | Heavy Duty

200A .....5T .....3Ø3W ...OH/UG.....	U9581-RL-QG-BLG-AEP
200A .....7T .....3Ø4W ...OH/UG.....	U9701-X-QG-BLG-AEP
200A .....5T .....3Ø3W ...OH/UG.....	Alum ..... *UAP9581-RL-BLG-AEP
200A .....7T .....3Ø4W ...OH/UG.....	Alum ... *UAP9701-X-QG-BLG-AEP

## 320 amp | 4, 5 & 7 Terminal | Lugs Included

320A .....4T .....1Ø3W ...OH/UG.....	U5161-X-K3L-K2L-BLG
320A .....4T .....1Ø3W ...UG.....	SWY .....U1797-O-K3L-K2L-BLG
320A .....4T .....1Ø3W ...OH/UG.....	SWY .....U4905-X-K3-K2-BLG
320A .....4T .....1Ø3W ...UG.....	Alum ... UAP1797-O-K3L-K2L-BLG
320A .....5T .....1Ø.....OH/UG.....	UAP4362-R-K3-K2-BLG
320A .....5T .....1Ø.....OH/UG.....	Alum ..... *UAP4362-R-K3-K2-BLG
320A .....7T .....3Ø4W ...OH/UG.....	U4342-R-K7-K6-BLG
320A .....7T .....3Ø4W ...OH/UG.....	Alum ..... *UAP4342-R-K7-K6-BLG
320A .....7T .....3Ø4W ...OH/UG.....	SWY .....U2594-X-K7-K6-BLG
320A .....7T .....3Ø4W ...OH/UG.....	Alum ..... UAP2594-X-K7-K6-BLG

## 200 amp | 4 Terminal | Horizontal Gang

200A .....2 Pos.....OH/UG (Lugs included).....	U1252-RRL-KK-K1-BLG-SLVG
200A .....3 Pos.....OH/UG.....	U1253-RRL-KK-K1-BLG-SLVG
200A .....4 Pos.....OH/UG.....	U1254-RRL-KK-K1-BLG-SLVG
200A .....5 Pos.....OH/UG.....	U1255-RRL-KK-K1-BLG-SLVG
200A .....6 Pos.....OH/UG.....	U1256-RRL-KK-K1-BLG-SLVG

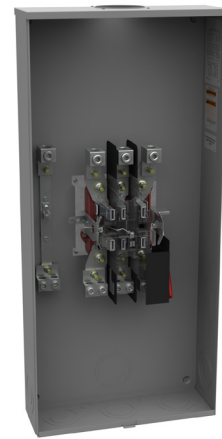
\*UAP for Coastal Area (Aluminum)

## 400 amp | 4 & 7 Terminal | Lugs Included | 400A Main Breaker

4T .....OH/UG .....1Ø3W.....	U6227-X-400-K3L-BLG
7T .....OH/UG .....3Ø4W.....	U6229-X-400-K7L-BLG

## 400 amp | 7 Terminal | Lugs Included | 2/200 Main Breakers

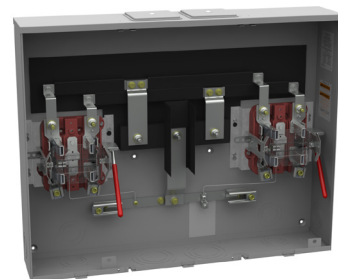
4T .....OH/UG .....1Ø3W.....	U6115-X-2/200-K7L-BLG
------------------------------	-----------------------



**U4342-R-K7-K6**



**U4801-XL-5T9**



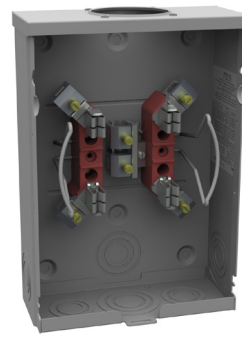
**U2872-XT-5T9**

Please consult serving utility for their requirements prior to ordering or installing, as specifications and approvals vary by utility, and may require local electrical inspector approval. All installations must be installed by a licensed electrician and must comply with all national and local codes, laws and regulations. Milbank reserves the right to make changes in specifications and features shown without notice or obligation.



# XCEL Energy

Description	Service Feed	Catalog Number
<b>200 amp   5 &amp; 7 Terminal   Heavy Duty</b>		
200A .....5T ..... HD..... OH/UG .....		U4801-XL-5T9
200A .....7T ..... HD..... OH/UG .....		U9701-RRL
200A .....7T ..... HD..... OH/UG .....		U4184-X
<b>320 amp   5 Terminal   Heavy Duty</b>		
320A .....5T ..... HD..... OH/UG .....		U1779-R-5T9
320A .....5T ..... HD..... UG .....	SWY .....	U3000-O-5T9-K3L-K2L
<b>320 amp   7 Terminal   Heavy Duty</b>		
320A .....7T ..... HD..... UG .....	SWY .....	U2120-X
320A .....7T ..... HD..... OH/UG .....	SWY .....	U2594-X
<b>200 amp   5 Terminal   Horizontal Gangs</b>		
2 Pos.....5T ..... HD..... OH/UG .....		U2872-XT-5T9
3 Pos.....5T ..... HD..... OH/UG .....		U2873-XT-5T9
4 Pos.....5T ..... HD..... OH/UG .....		U2874-XT-5T9
5 Pos.....5T ..... HD..... OH/UG .....		U2875-XT-5T9
6 Pos.....5T ..... HD..... OH/UG .....		U2876-XT-5T9



**U7487-RL-TG**

# CenterPoint Energy

Description	Service Feed	Catalog Number
<b>125-200 amp   4 Terminal   Ring Type</b>		
125A .....4T .....	OH/UG .....	U8874-RL-LR
200A .....4T .....	OH .....	U5009-RL-LR
200A .....4T .....	OH/UG .....	U8878-RL-LR
200A .....4T .....	UG .....	U8878-O-LR
<b>200 amp   5 &amp; 7 Terminal   Ring Type</b>		
200A .....5T ..... 3Ø3W ...	OH/UG .....	(2½" Hub included) U1973-EL
200A .....7T ..... HD.....	OH/UG .....	U3328-RXL-LR
<b>320 amp   4, 5 &amp; 7 Terminal - Residential/Light Commercial</b>		
320A .....4T ..... HDLVR...UG .....	(Lugs included)	U1797-O-K3L-K2L
320A .....4T ..... HDLVR...OH/UG .....		U2448-X
320A .....5T ..... HDLVR...OH/UG .....		U1079-R-5T9
320A .....7T ..... HDLVR...OH/UG .....		U2594-X
320A .....7T ..... HDLVR...OH/UG .....		U2594-X-BLG



**U8874-RL-TG**

Gang sockets are approved by CenterPoint Energy on a case-by-case basis

Please consult serving utility for their requirements prior to ordering or installing, as specifications and approvals vary by utility, and may require local electrical inspector approval. All installations must be installed by a licensed electrician and must comply with all national and local codes, laws and regulations. Milbank reserves the right to make changes in specifications and features shown without notice or obligation.



# Entergy

Description	Service Feed	Catalog Number
<b>125 amp   4 Terminal</b>		
125A .....4T .....	OH hexhead connectors .....	U8435-RL-TG
125A .....4T .....	OH screwhead connectors .....	U7487-RL-TG
<b>200 amp   4, 5 &amp; 7 Terminal</b>		
200A .....4T .....	OH .....	U7021-RL-TG (or DL-TG)
200A .....4T .....	OH .....	U7040-RL-TG
200A .....4T .....	UG .....	U1980-O
200A .....5T ..... HD.....	OH .....	U4581-RL
200A .....7T ..... HD.....	OH .....	U4701-RL
200A .....7T ..... HD.....	UG .....	U4184-X
<b>320 amp   4, 5 &amp; 7 Terminal   Heavy Duty</b>		
320A .....4T ..... HD.....	UG* .....	U1797-O-K3L-K2L
320A .....4T ..... HD.....	UG .....	U4257-X
320A .....5T ..... HD.....	OH..... Ctr. Disconnect .....	U4419-X
320A .....5T ..... HD.....	OH* .....	U4505-X-2/K3
320A .....7T ..... HD.....	OH* .....	U4487-X-2/K6 or K7
320A .....7T ..... HD.....	UG*..... SWY .....	U2120-X-2/K7
<b>150/200 amp   4 Terminal   Horizontal Gangs</b>		
2 Pos. ....4T .....	OH/UG* .....	U1252-X-K1
3 Pos. ....4T .....	OH/UG .....	U1253-X
4 Pos. ....4T .....	OH/UG .....	U1254-X
5 Pos. ....4T .....	OH/UG .....	U1255-X
6 Pos. ....4T .....	OH/UG .....	U1256-X
<b>C.T. Cabinets</b>		
400-600A.....		403214-TC3R-SP1
800A .....		543214-TC3R-SP1

\* Lugs included



**403214-TC3R-SP1**

Please consult serving utility for their requirements prior to ordering or installing, as specifications and approvals vary by utility, and may require local electrical inspector approval. All installations must be installed by a licensed electrician and must comply with all national and local codes, laws and regulations. Milbank reserves the right to make changes in specifications and features shown without notice or obligation.

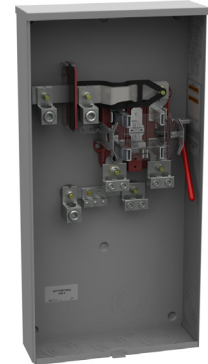


# Meter Mounting Equipment

Texas Deregulated Utilities

## TXU/Oncor Area

Description	Service Feed	Catalog Number
<b>150-200 amp   4 Terminal</b>		
150A .....4T .....OH.....		U7262-RL-TG
200A .....4T .....OH/UG.....		U7040-XL-TG
200A .....4T .....HD.....OH/UG.....		U9801-RXL
<b>200 amp   5 &amp; 7 Terminal</b>		
200A .....5T .....HD.....OH/UG.....		U9581-RL-QG
200A .....7T .....HD.....OH/UG.....		U9701-RXL
<b>320 amp   4 &amp; 7 Terminal</b>		
320A .....4T .....HD.....OH (w/o lugs).....		U4363-R
320A .....4T .....SWY .....UG (w/ lugs).....		U1797-O-K3L-K2L
320A .....7T .....SWY .....OH/UG (w/o lugs).....		U4013-X
<b>150 amp   4 Terminal   Horizontal Gang</b>		
150A .....3 Pos.....OH/UG.....		U9353-XL
150A .....4 Pos.....OH/UG.....		U9354-XL
<b>200 amp   4 Terminal   Horizontal Gang</b>		
200A .....2 Pos.....OH/UG.....		U1252-X-K1
200A .....3 Pos.....OH/UG.....		U1253-X
200A .....4 Pos.....OH/UG.....		U1254-X
200A .....5 Pos.....OH/UG.....		U1255-X
200A .....6 Pos.....OH/UG.....		U1256-X
<b>200 amp   4 Terminal   Mobile Home Pedestal</b>		
200A .....1 Pos.....UG Ped.....		U8567-O-200
200A .....2 Pos.....UG Ped (twin).....		U8667-O-2/200



U1797-O-K3L-K2L



U9701-RXL

## Accessories

Closing Plates	Suffix	Catalog #	Lug Kits	Suffix	Catalog #
Sml. Closing Plate	-XL*	A7551	<u>350 Kcmil</u>	1Ø	(3 per set)
Lg. Closing Plate	-X	A9064	Single Lug Kit	-K1	K1539
Adapter Plate	-RRL	S8324	Twin Lug Kit	-K2	K1350
<b>Hubs for Standard "RL" Opening</b>			Twin Lug Kit non-rotating		-K2L
1" Hub	-WL	A7514	K1350L		
1¼" Hub	-YL	A7515	<u>600 Kcmil</u>	1Ø	(3 per set)
1½" Hub	-ZL	A7516	Single Lug Kit	-K3	K1540
2" Hub	-DL	A7517	Single Lug Kit non-rotating		-K3L
2½" Hub	-EL	A7518	K1540L		
<b>Hubs for Large "R" Opening</b>			Twin Lug Kit	-K4	K1541
3" Hub	-F	A8110	<u>350 Kcmil</u>	3Ø	(4 per set)
3½" Hub	-G	A8111	Single Lug Kit	-K5	K3082
4" Hub	-H	A8112	Twin Lug Kit	-K6	K3442
<b>Fifth Terminals</b>			<u>600 Kcmil</u>	3Ø	(4 per set)
Fifth Terminal	Square Hole	K5T	Single Lug Kit	-K7	K3441
Fifth Terminal	Round Hole	5T8K2	Twin Lug Kit	-K8	K3083

Please consult serving utility for their requirements prior to ordering or installing, as specifications and approvals vary by utility, and may require local electrical inspector approval. All installations must be installed by a licensed electrician and must comply with all national and local codes, laws and regulations. Milbank reserves the right to make changes in specifications and features shown without notice or obligation.



# Texas / New Mexico Power - TNP & CVEC Area

Description	Service Feed	Catalog Number
<b>125 amp   4 &amp; 7 Terminal</b>		
125A.....4T.....	OH.....	U8435-RL-TG
125A.....4T.....	UG.....	U7588-XL
125A.....7T.....	OH.....	(1½" hub included) U8100-ZL
<b>200 amp   4 &amp; 5 Terminal</b>		
200A.....4T.....	OH.....	U7021-RL-TG
200A.....4T..... SWY.....	UG.....	U1980-O
200A.....5T.....	OH.....	U9580-RXL
<b>320 amp   4 Terminal</b>		
320A.....4T.....	OH.....	U1079-R
320A.....4T.....	OH/UG.....	U2448-X
<b>200/320 amp   7 Terminal   Medium &amp; Heavy Duty</b>		
200A.....7T..... MD.....	OH/UG.....	(Lever bypass - non jaw clamping) U7423-XL
200A.....7T..... HD.....	OH/UG.....	U9701-RRL
320A.....7T..... HD.....	OH/UG.....	U2594-X
<b>150/200 amp   4 &amp; 7 Terminal   Horizontal Gangs</b>		
2 Pos.....4T.....	OH/UG.....	U1232-X..... 150A..... 200A..... U1252-X-K1
3 Pos.....4T.....	OH/UG.....	U1233-RXL..... U1253-X-K3
4 Pos.....4T.....	OH/UG.....	U1234-RXL..... U1254-X-K3
5 Pos.....4T.....	OH/UG.....	U1235-RXL..... U1255-X-K4
6 Pos.....4T.....	OH/UG.....	U1236-RXL..... U1256-X-K4
4 Pos.....7T.....	OH/UG.....	U2734-XT



U1980-O



U7423-XL



U7021-DL-TG

## CoServ Area

Description	Service Feed	Catalog Number
<b>200 amp   4 Terminal</b>		
200A.....4T.....	OH/UG.....	U7040-XL-TG
<b>320 amp   4 Terminal</b>		
320A.....4T.....	OH/UG.....	(Lugs included) U4257-X-2/K2
<b>200 amp   7 Terminal   Medium &amp; Heavy Duty</b>		
200A.....7T..... HD.....	OH.....	(2" Hub included) U9700-DL-QG
200A.....7T..... MD.....	OH/UG.....	(Lever bypass - non jaw clamping) U3786-X-QG
<b>320 amp   7 Terminal   Heavy Duty</b>		
320A.....7T..... HD.....	OH/UG.....	(Lugs included) U4487-X-2/K6

## Pedernales Electric Cooperative (PEC)

Description	Service Feed	Catalog Number
<b>200 amp   4 Terminal</b>		
200A.....4T.....	OH.....	U7021-DL-TG
200A.....4T.....	UG.....	U7040-XL-TG
320A.....4T.....	OH.....	U1079-F-2/K3L-PEC
320A.....4T.....	UG.....	U1797-O-2/K3L-PEC

Please consult serving utility for their requirements prior to ordering or installing, as specifications and approvals vary by utility, and may require local electrical inspector approval. All installations must be installed by a licensed electrician and must comply with all national and local codes, laws and regulations. Milbank reserves the right to make changes in specifications and features shown without notice or obligation.



# AEP—West Area

Description	Service Feed	Catalog Number
<b>125-200 amp   4 Terminal</b>		
200A .....4T .....OH.....	U7040-RL-TG-KK-BLG-AEP	
200A .....4T .....OH.....	U7021-RL-TG-KK-BLG	
200A .....4T .....UG.....	U1980-O-KK-BLG-AEP	
200A .....4T .....OH.....	Alum*UAP7040-RL-TG-KK-BLG-AEP	
200A .....4T .....UG.....	Alum ... *UAP1980-O-KK-BLG-AEP	
200A .....4T .....OH/UG.....	U9801-RXL-QG-BLG-AEP	
200A .....4T .....OH/UG.....	Alum*UAP9801-RXL-QG-BLG-AEP	

## 200 amp | 5 & 7 Terminal | 3Ø | Heavy Duty

200A .....5T .....3Ø3W ...OH/UG.....	U9581-RL-QG-BLG-AEP
200A .....7T .....3Ø4W ...OH/UG.....	U9701-X-QG-BLG-AEP
200A .....5T .....3Ø3W ...OH/UG.....	Alum ..... *UAP9581-RL-BLG-AEP
200A .....7T .....3Ø4W ...OH/UG.....	Alum ... *UAP9701-X-QG-BLG-AEP

## 320 amp | 4, 5 & 7 Terminal | Lugs Included

320A .....4T .....1Ø3W ...OH/UG.....	U5161-X-K3L-K2L-BLG
320A .....4T .....1Ø3W ...UG.....	SWY .....U1797-O-K3L-K2L-BLG
320A .....4T .....1Ø3W ...OH/UG.....	SWY .....U4905-X-K3-K2-BLG
320A .....4T .....1Ø3W ...UG.....	Alum ... UAP1797-O-K3L-K2L-BLG
320A .....5T .....1Ø.....OH/UG.....	UAP4362-R-K3-K2-BLG
320A .....5T .....1Ø.....OH/UG.....	Alum ..... *UAP4362-R-K3-K2-BLG
320A .....7T .....3Ø4W ...OH/UG.....	U4342-R-K7-K6-BLG
320A .....7T .....3Ø4W ...OH/UG.....	Alum ..... *UAP4342-R-K7-K6-BLG
320A .....7T .....3Ø4W ...OH/UG.....	SWY .....U2594-X-K7-K6-BLG
320A .....7T .....3Ø4W ...OH/UG.....	Alum ..... UAP2594-X-K7-K6-BLG

## 200 amp | 4 Terminal | Horizontal Gang

200A .....2 Pos.....OH/UG (Lugs included).....	U1252-RRL-KK-K1-BLG-SLVG
200A .....3 Pos.....OH/UG.....	U1253-RRL-KK-K1-BLG-SLVG
200A .....4 Pos.....OH/UG.....	U1254-RRL-KK-K1-BLG-SLVG
200A .....5 Pos.....OH/UG.....	U1255-RRL-KK-K1-BLG-SLVG
200A .....6 Pos.....OH/UG.....	U1256-RRL-KK-K1-BLG-SLVG

\*UAP for Coastal Area (Aluminum)

## 400 amp | 4 & 7 Terminal | Lugs Included | 400A Main Breaker

4T .....OH/UG .....1Ø3W.....	U6227-X-400-K3L-BLG
7T .....OH/UG .....3Ø4W.....	U6229-X-400-K7L-BLG

## 400 amp | 7 Terminal | Lugs Included | 2/200 Main Breakers

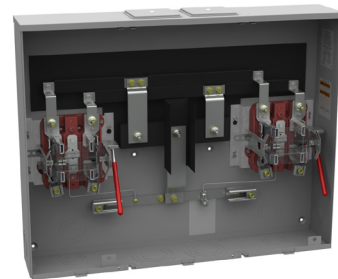
4T .....OH/UG .....1Ø3W.....	U6115-X-2/200-K7L-BLG
------------------------------	-----------------------



**U4342-R-K7-K6**



**U4801-XL-5T9**



**U2872-XT-5T9**

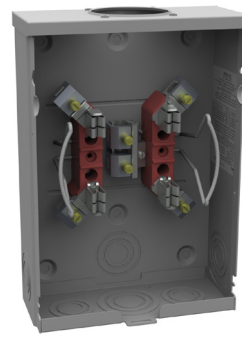
Please consult serving utility for their requirements prior to ordering or installing, as specifications and approvals vary by utility, and may require local electrical inspector approval. All installations must be installed by a licensed electrician and must comply with all national and local codes, laws and regulations. Milbank reserves the right to make changes in specifications and features shown without notice or obligation.





# XCEL Energy

Description	Service Feed	Catalog Number
<b>200 amp   5 &amp; 7 Terminal   Heavy Duty</b>		
200A .....5T ..... HD..... OH/UG .....		U4801-XL-5T9
200A .....7T ..... HD..... OH/UG .....		U9701-RRL
200A .....7T ..... HD..... OH/UG .....		U4184-X
<b>320 amp   5 Terminal   Heavy Duty</b>		
320A .....5T ..... HD..... OH/UG .....		U1779-R-5T9
320A .....5T ..... HD..... UG .....	SWY .....	U3000-O-5T9-K3L-K2L
<b>320 amp   7 Terminal   Heavy Duty</b>		
320A .....7T ..... HD..... UG .....	SWY .....	U2120-X
320A .....7T ..... HD..... OH/UG .....	SWY .....	U2594-X
<b>200 amp   5 Terminal   Horizontal Gangs</b>		
2 Pos.....5T ..... HD..... OH/UG .....		U2872-XT-5T9
3 Pos.....5T ..... HD..... OH/UG .....		U2873-XT-5T9
4 Pos.....5T ..... HD..... OH/UG .....		U2874-XT-5T9
5 Pos.....5T ..... HD..... OH/UG .....		U2875-XT-5T9
6 Pos.....5T ..... HD..... OH/UG .....		U2876-XT-5T9



**U7487-RL-TG**

# CenterPoint Energy

Description	Service Feed	Catalog Number
<b>125-200 amp   4 Terminal   Ring Type</b>		
125A .....4T .....	OH/UG .....	U8874-RL-LR
200A .....4T .....	OH .....	U5009-RL-LR
200A .....4T .....	OH/UG .....	U8878-RL-LR
200A .....4T .....	UG .....	U8878-O-LR
<b>200 amp   5 &amp; 7 Terminal   Ring Type</b>		
200A .....5T ..... 3Ø3W ...	OH/UG .....	(2½" Hub included) U1973-EL
200A .....7T ..... HD.....	OH/UG .....	U3328-RXL-LR
<b>320 amp   4, 5 &amp; 7 Terminal - Residential/Light Commercial</b>		
320A .....4T ..... HDLVR...UG .....	(Lugs included)	U1797-O-K3L-K2L
320A .....4T ..... HDLVR...OH/UG .....		U2448-X
320A .....5T ..... HDLVR...OH/UG .....		U1079-R-5T9
320A .....7T ..... HDLVR...OH/UG .....		U2594-X
320A .....7T ..... HDLVR...OH/UG .....		U2594-X-BLG



**U8874-RL-TG**

Gang sockets are approved by CenterPoint Energy on a case-by-case basis

Please consult serving utility for their requirements prior to ordering or installing, as specifications and approvals vary by utility, and may require local electrical inspector approval. All installations must be installed by a licensed electrician and must comply with all national and local codes, laws and regulations. Milbank reserves the right to make changes in specifications and features shown without notice or obligation.



# Entergy

Description	Service Feed	Catalog Number
<b>125 amp   4 Terminal</b>		
125A .....4T .....	OH hexhead connectors .....	U8435-RL-TG
125A .....4T .....	OH screwhead connectors .....	U7487-RL-TG
<b>200 amp   4, 5 &amp; 7 Terminal</b>		
200A .....4T .....	OH .....	U7021-RL-TG (or DL-TG)
200A .....4T .....	OH .....	U7040-RL-TG
200A .....4T .....	UG .....	U1980-O
200A .....5T ..... HD.....	OH .....	U4581-RL
200A .....7T ..... HD.....	OH .....	U4701-RL
200A .....7T ..... HD.....	UG .....	U4184-X
<b>320 amp   4, 5 &amp; 7 Terminal   Heavy Duty</b>		
320A .....4T ..... HD.....	UG* .....	U1797-O-K3L-K2L
320A .....4T ..... HD.....	UG .....	U4257-X
320A .....5T ..... HD.....	OH..... Ctr. Disconnect .....	U4419-X
320A .....5T ..... HD.....	OH* .....	U4505-X-2/K3
320A .....7T ..... HD.....	OH* .....	U4487-X-2/K6 or K7
320A .....7T ..... HD.....	UG*..... SWY .....	U2120-X-2/K7
<b>150/200 amp   4 Terminal   Horizontal Gangs</b>		
2 Pos. ....4T .....	OH/UG* .....	U1252-X-K1
3 Pos. ....4T .....	OH/UG .....	U1253-X
4 Pos. ....4T .....	OH/UG .....	U1254-X
5 Pos. ....4T .....	OH/UG .....	U1255-X
6 Pos. ....4T .....	OH/UG .....	U1256-X
<b>C.T. Cabinets</b>		
400-600A.....		403214-TC3R-SP1
800A .....		543214-TC3R-SP1

\* Lugs included



**403214-TC3R-SP1**

Please consult serving utility for their requirements prior to ordering or installing, as specifications and approvals vary by utility, and may require local electrical inspector approval. All installations must be installed by a licensed electrician and must comply with all national and local codes, laws and regulations. Milbank reserves the right to make changes in specifications and features shown without notice or obligation.

