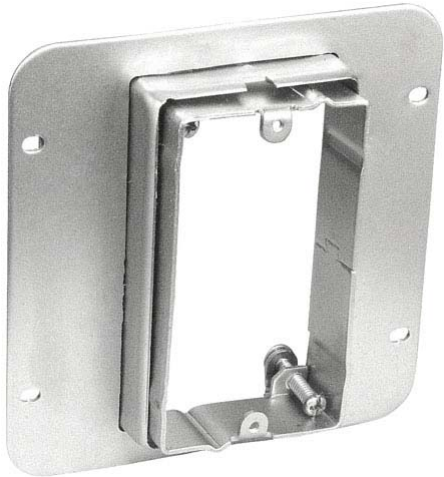


**Stock #: AMR111B**



**Product Description:**

Garvin Industries 4-11/16" Square One Gang Adjustable Depth Device Rings are used to add One power outlet or low voltage device to existing box when finished wall thickness is unknown and may range from 3/4" to 1-1/2" thick tile, plaster or drywall.

**Product Specifications:**

Compliance :

**Contact Garvin Industries today:**

Phone: 1-847-455-0188

Fax: 1-847-455-0334

[info@garvinindustries.com](mailto:info@garvinindustries.com)

[www.garvinindustries.com](http://www.garvinindustries.com)

**Stock #: AMR111B**



**Product Description:**

Garvin Industries 4-11/16" Square One Gang Adjustable Depth Device Rings are used to add One power outlet or low voltage device to existing box when finished wall thickness is unknown and may range from 3/4" to 1-1/2" thick tile, plaster or drywall.

**Product Specifications:**

Compliance :

**Contact Garvin Industries today:**

Phone: 1-847-455-0188

Fax: 1-847-455-0334

[info@garvinindustries.com](mailto:info@garvinindustries.com)

[www.garvinindustries.com](http://www.garvinindustries.com)