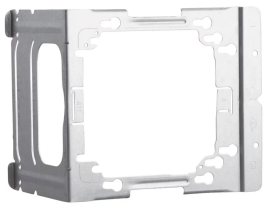




ELECTRICAL BOX BRACKET TO STUD, 2 1/2", 3 5/8", 4" WALL DEPTH, 3.89"

CATALOG NUMBER

C4



CERTIFICATIONS



FEATURES

Improved keyhole pattern to make mounting of 4 11/16" boxes easier

Box lock tab secures box to bracket during assembly and allows mud ring to be removed following installation on the stud, providing easy frontal access to the inside of the box

Designed with thicker steel to significantly increase rigidity and help prevent box movement and trim out issues

Unique "step in" feature at the top and bottom of the bracket to easily access the set screws

Works with both standard and adjustable single and double gang mud rings

Mounts mud rings for low voltage applications

Visible mud ring reference location lines help position mud rings for low voltage applications

Additional bend points on C4 and C6 brackets for greater versatility

Patented

PRODUCT ATTRIBUTES

Material: Steel

Finish: Pregalvanized

Stud Wall Depth: 2 1/2" - 3 5/8"; 4" Min

Box Size: 4;4 11/16"

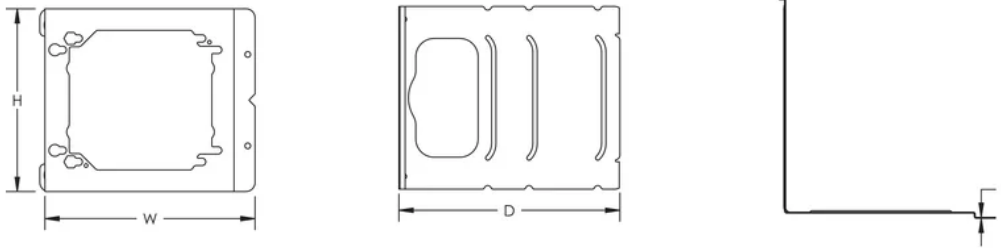
Depth (D): 4.03"

Height (H): 5.05"

Width (W): 5.91"

Thickness (T): 0.03"

DIAGRAMS



WARNING

nVent products shall be installed and used only as indicated in nVent's product instruction sheets and training materials. Instruction sheets are available at www.nvent.com and from your nVent customer service representative. Improper installation, misuse, misapplication or other failure to completely follow nVent's instructions and warnings may cause product malfunction, property damage, serious bodily injury and death and/or void your warranty.

North America

+1.800.753.9221

Option 1 – Customer Care

Option 2 – Technical Support

Europe

Netherlands:

+31 800-0200135

France:

+33 800 901 793

Europe

Germany:

800 1890272

Other Countries:

+31 13 5835404

APAC

Shanghai:

+ 86 21 2412 1618/19

Sydney:

+61 2 9751 8500



Our powerful portfolio of brands:
nVent.com **CADDY ERICO HOFFMAN RAYCHEM SCHROFF**
TRACER

© 2025 nVent. All nVent marks and logos are owned or licensed by nVent Services GmbH or its affiliates. All other trademarks are the property of their respective owners.

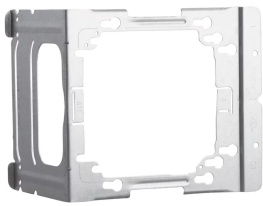
nVent reserves the right to change specifications without notice.



ELECTRICAL BOX BRACKET TO STUD, 2 1/2", 3 5/8", 4" WALL DEPTH, 3.89"

CATALOG NUMBER

C4



CERTIFICATIONS



FEATURES

Improved keyhole pattern to make mounting of 4 11/16" boxes easier

Box lock tab secures box to bracket during assembly and allows mud ring to be removed following installation on the stud, providing easy frontal access to the inside of the box

Designed with thicker steel to significantly increase rigidity and help prevent box movement and trim out issues

Unique "step in" feature at the top and bottom of the bracket to easily access the set screws

Works with both standard and adjustable single and double gang mud rings

Mounts mud rings for low voltage applications

Visible mud ring reference location lines help position mud rings for low voltage applications

Additional bend points on C4 and C6 brackets for greater versatility

Patented

PRODUCT ATTRIBUTES

Material: Steel

Finish: Pregalvanized

Stud Wall Depth: 2 1/2" - 3 5/8"; 4" Min

Box Size: 4;4 11/16"

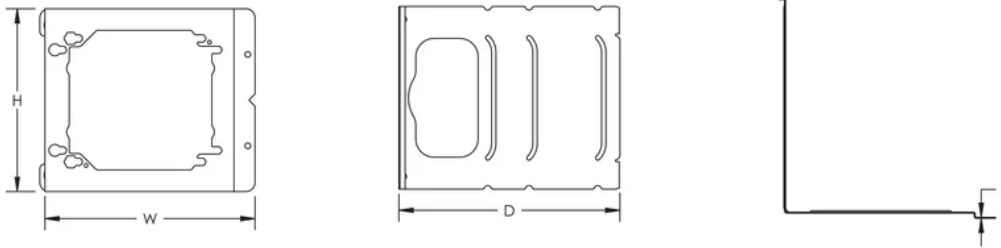
Depth (D): 4.03"

Height (H): 5.05"

Width (W): 5.91"

Thickness (T): 0.03"

DIAGRAMS



WARNING

nVent products shall be installed and used only as indicated in nVent's product instruction sheets and training materials. Instruction sheets are available at www.nvent.com and from your nVent customer service representative. Improper installation, misuse, misapplication or other failure to completely follow nVent's instructions and warnings may cause product malfunction, property damage, serious bodily injury and death and/or void your warranty.

North America

+1.800.753.9221

Option 1 – Customer Care

Option 2 – Technical Support

Europe

Netherlands:

+31 800-0200135

France:

+33 800 901 793

Europe

Germany:

800 1890272

Other Countries:

+31 13 5835404

APAC

Shanghai:

+ 86 21 2412 1618/19

Sydney:

+61 2 9751 8500



Our powerful portfolio of brands:
nVent.com **CADDY ERICO HOFFMAN RAYCHEM SCHROFF**
TRACER

© 2025 nVent. All nVent marks and logos are owned or licensed by nVent Services GmbH or its affiliates. All other trademarks are the property of their respective owners.

nVent reserves the right to change specifications without notice.