

# Commercial Hubs

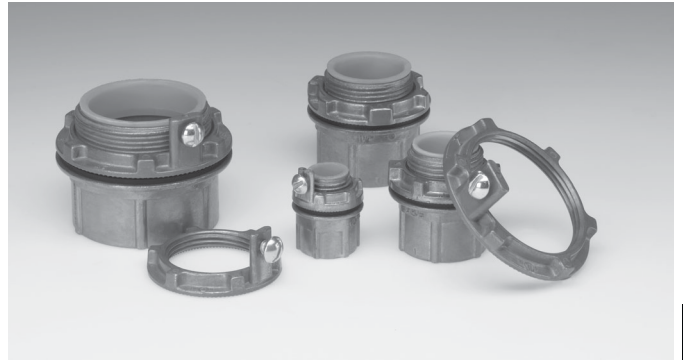
## Features:

- Commercial Hubs are dependable low profile hubs that meet the requirements of UL standards
- Neoprene grade chloroprene gasket firms into an elastic compound (similar to rubber) and provides environmental protection for industrial applications
- Medium viscosity flame retardant insuliner provides a smooth pulling surface
- Cast threads to meet UL standards and allow quick and easy installation
- Hex surfaces on the body make tightening with a wrench easy
- Thinner, lighter weight construction
- Available in standard and grounded version to meet customer preferences

## Certifications and Compliances:

NEC/CEC:

- Class I, Division 2
- Class II, Divisions 1 & 2
- Class III, Divisions 1 & 2
- UL and cUL Listed
- UL File No. E-19189
- Suitable for wet locations



The use of rigid/IMC conduit remains the preferred choice in many applications because of the physical protection of conductors and long service life of the installation. Consequently, the need to terminate conduit into a box or enclosure creates the need for a hub.

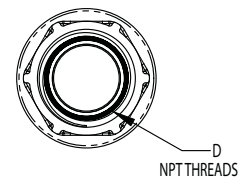
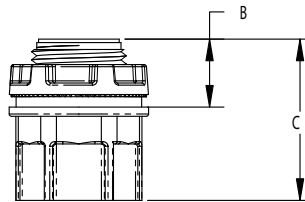
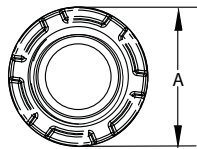
The Commercial Hub has been developed to provide a lightweight hub that installs quickly and easily, providing a secure termination.

Conduit Hubs

## Standard Materials and Finishes:

- Body and nut – corrosion-resistant Zamek-2 and Zamek-3 type zinc
- Gasket – neoprene grade chloroprene
- Insuliner – Lexan 920A, medium viscosity flame retardant grade
- Finish – natural

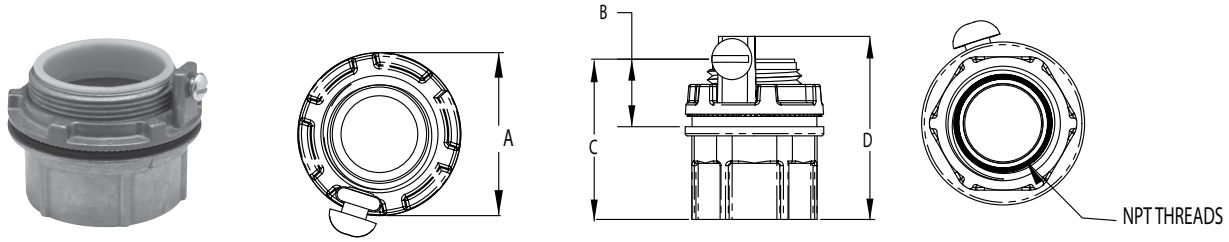
## CHB Hubs:



Cat. #	Size	A	B	C	Unit Qty.	Wt. Lbs. Per 100
CHB1	1/2"	1 1/32"	39/64"	1 7/16"	25	14
CHB2	3/4"	1 1/2"	2 1/32"	1 39/64"	25	20
CHB3	1"	1 57/64"	13/16"	1 55/64"	25	33
CHB4	1 1/4"	2 1/4"	53/64"	2"	10	43
CHB5	1 1/2"	2 35/64"	55/64"	2 1/64"	10	56
CHB6	2"	3 3/64"	3 1/32"	2 7/32"	10	71
CHB7	2 1/2"	3 9/16"	1 1/64"	2 5/8"	2	135
CHB8	3"	4 3/16"	1 1/64"	2 11/64"	2	156
CHB9	3 1/2"	4 25/32"	3 1/32"	2 11/64"	2	193
CHB10	4"	5 23/64"	1 1/64"	2 11/64"	1	229

# Commercial Hubs

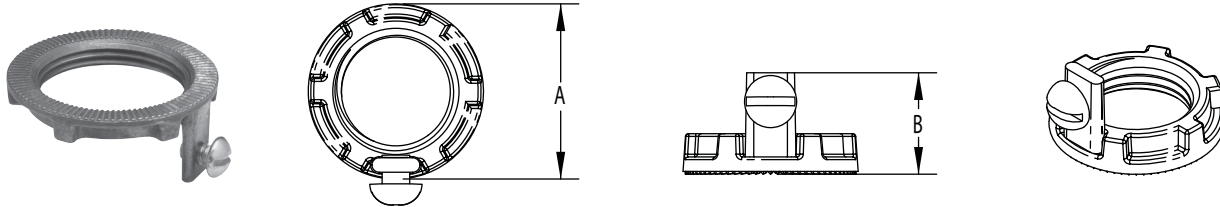
## CHG Grounded Hubs:



Conduit Hubs

Cat. #	Size	A	B	C	D	Unit Qty.	Wt. Lbs. Per 100
CHG1	1/2"	1 1/32"	39/64"	1 7/16"	1 34/64"	25	14
CHG2	3/4"	1 1/2"	21/32"	1 99/64"	1 55/64"	25	21
CHG3	1"	1 57/64"	13/16"	1 55/64"	2 7/64"	25	34
CHG4	1 1/4"	2 1/4"	53/64"	2"	2 9/32"	10	45
CHG5	1 1/2"	2 35/64"	55/64"	2 7/64"	2 23/64"	10	59
CHG6	2"	3 3/64"	31/32"	2 7/32"	2 25/64"	10	75
CHG7	2 1/2"	3 9/16"	1 1/64"	2 5/8"	2 49/64"	2	145
CHG8	3"	4 3/16"	1 7/64"	2 31/64"	2 53/64"	2	161
CHG9	3 1/2"	4 25/32"	31/32"	2 41/64"	2 15/16"	2	196
CHG10	4"	5 23/64"	1 7/64"	2 31/64"	2 31/32"	1	234

## CHGN Ground Nuts:



Cat. #	Size	A	B	Ground Screw Size	Unit Qty.	Wt. Lbs. Per 100
CHGN1	1/2"	1 1/32"	2 1/32"	10 - 32	25	4
CHGN2	3/4"	1 1/2"	53/64"	10 - 32	25	5
CHGN3	1"	1 57/64"	59/64"	10 - 32	25	10
CHGN4	1 1/4"	2 1/4"	31/32"	1 1/4 - 20	10	11
CHGN5	1 1/2"	2 35/64"	63/64"	1 1/4 - 20	10	14
CHGN6	2"	3 3/64"	63/64"	1 1/4 - 20	10	16
CHGN7	2 1/2"	3 9/16"	1"	1 1/4 - 20	2	22
CHGN8	3"	4 3/16"	1 5/64"	1 1/4 - 20	2	29
CHGN9	3 1/2"	4 25/32"	1 7/64"	1 1/4 - 20	2	31
CHGN10	4"	5 23/64"	1 7/32"	1 1/4 - 20	1	40

# Commercial Hubs

## Features:

- Commercial Hubs are dependable low profile hubs that meet the requirements of UL standards
- Neoprene grade chloroprene gasket firms into an elastic compound (similar to rubber) and provides environmental protection for industrial applications
- Medium viscosity flame retardant insuliner provides a smooth pulling surface
- Cast threads to meet UL standards and allow quick and easy installation
- Hex surfaces on the body make tightening with a wrench easy
- Thinner, lighter weight construction
- Available in standard and grounded version to meet customer preferences

## Certifications and Compliances:

NEC/CEC:

- Class I, Division 2
- Class II, Divisions 1 & 2
- Class III, Divisions 1 & 2
- UL and cUL Listed
- UL File No. E-19189
- Suitable for wet locations



The use of rigid/IMC conduit remains the preferred choice in many applications because of the physical protection of conductors and long service life of the installation. Consequently, the need to terminate conduit into a box or enclosure creates the need for a hub.

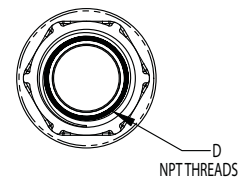
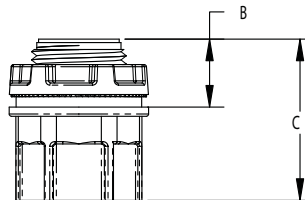
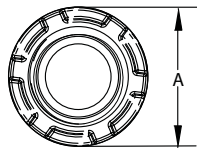
The Commercial Hub has been developed to provide a lightweight hub that installs quickly and easily, providing a secure termination.

Conduit Hubs

## Standard Materials and Finishes:

- Body and nut – corrosion-resistant Zamek-2 and Zamek-3 type zinc
- Gasket – neoprene grade chloroprene
- Insuliner – Lexan 920A, medium viscosity flame retardant grade
- Finish – natural

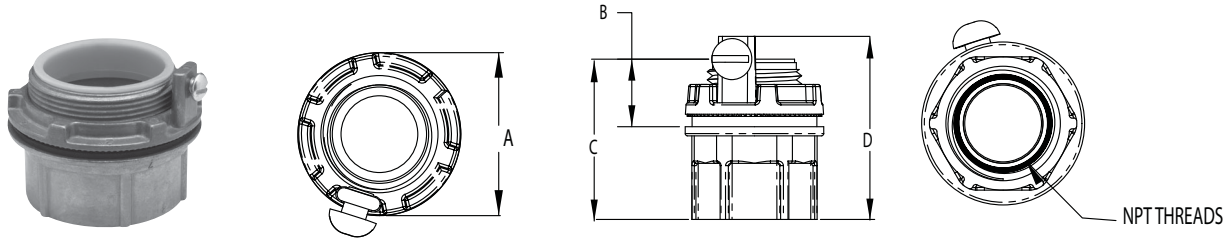
## CHB Hubs:



Cat. #	Size	A	B	C	Unit Qty.	Wt. Lbs. Per 100
CHB1	1/2"	1 1/32"	39/64"	1 7/16"	25	14
CHB2	3/4"	1 1/2"	2 1/32"	1 39/64"	25	20
CHB3	1"	1 57/64"	13/16"	1 55/64"	25	33
CHB4	1 1/4"	2 1/4"	53/64"	2"	10	43
CHB5	1 1/2"	2 35/64"	55/64"	2 1/64"	10	56
CHB6	2"	3 3/64"	3 1/32"	2 1/32"	10	71
CHB7	2 1/2"	3 9/16"	1 1/64"	2 5/8"	2	135
CHB8	3"	4 3/16"	1 1/64"	2 11/64"	2	156
CHB9	3 1/2"	4 25/32"	3 1/32"	2 11/64"	2	193
CHB10	4"	5 23/64"	1 1/64"	2 11/64"	1	229

# Commercial Hubs

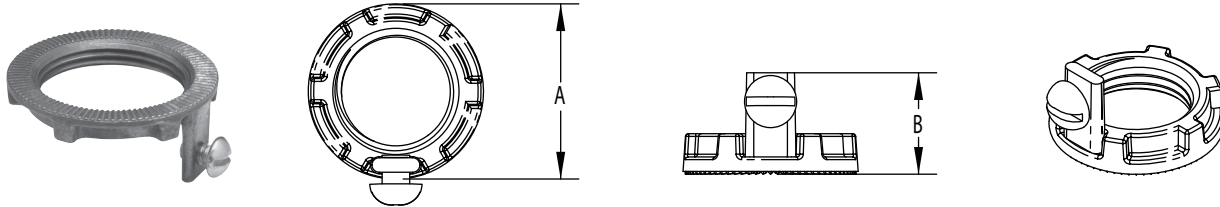
## CHG Grounded Hubs:



Conduit Hubs

Cat. #	Size	A	B	C	D	Unit Qty.	Wt. Lbs. Per 100
CHG1	1/2"	1 1/32"	39/64"	1 7/16"	1 34/64"	25	14
CHG2	3/4"	1 1/2"	21/32"	1 99/64"	1 55/64"	25	21
CHG3	1"	1 57/64"	13/16"	1 55/64"	2 7/64"	25	34
CHG4	1 1/4"	2 1/4"	53/64"	2"	2 9/32"	10	45
CHG5	1 1/2"	2 35/64"	55/64"	2 7/64"	2 23/64"	10	59
CHG6	2"	3 3/64"	31/32"	2 7/32"	2 25/64"	10	75
CHG7	2 1/2"	3 9/16"	1 1/64"	2 5/8"	2 49/64"	2	145
CHG8	3"	4 3/16"	1 7/64"	2 31/64"	2 53/64"	2	161
CHG9	3 1/2"	4 25/32"	31/32"	2 41/64"	2 15/16"	2	196
CHG10	4"	5 23/64"	1 7/64"	2 7/64"	2 31/32"	1	234

## CHGN Ground Nuts:



Cat. #	Size	A	B	Ground Screw Size	Unit Qty.	Wt. Lbs. Per 100
CHGN1	1/2"	1 1/32"	2 1/32"	10 - 32	25	4
CHGN2	3/4"	1 1/2"	53/64"	10 - 32	25	5
CHGN3	1"	1 57/64"	59/64"	10 - 32	25	10
CHGN4	1 1/4"	2 1/4"	31/32"	1 1/4 - 20	10	11
CHGN5	1 1/2"	2 35/64"	63/64"	1 1/4 - 20	10	14
CHGN6	2"	3 3/64"	63/64"	1 1/4 - 20	10	16
CHGN7	2 1/2"	3 9/16"	1"	1 1/4 - 20	2	22
CHGN8	3"	4 3/16"	1 9/64"	1 1/4 - 20	2	29
CHGN9	3 1/2"	4 25/32"	1 7/64"	1 1/4 - 20	2	31
CHGN10	4"	5 23/64"	1 7/32"	1 1/4 - 20	1	40