

## Straight-Sided Utility Channel



### FEATURES

- Die formed steel housing with heat sink embossments for cooler running ballasts
- Ballast cover retained by ¼ turn fasteners
- Individual or row mounting, surface or suspended
- Channel ends double as joiners
- All metal parts are treated with a five stage phosphate bonding process and finished with baked white enamel
- UL listed 1598, cUL or CSA. Damp Location standard

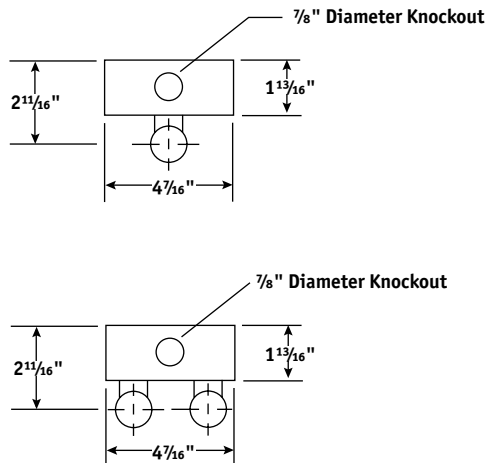
### ORDERING INFORMATION

| MODEL                                    | SIZE  | NO. OF LAMPS IN CROSS SECTION                                      | LAMP TYPE  | BALLAST  | VOLTAGE                               | OPTIONS   |
|--|---|--|--|--|---------------------------------------|---|
| <b>CS</b> Straight-Sided Utility Channel | 2 2'<br>3 3'<br>4 4'<br>6 6'<br>8 8'<br>16 16' (Two housings) | 1 One<br>2 Two<br>3 Three<br>See Product Availability table below. | 14 2', T5: 14 Watt<br>17 2', T8: 17 Watt<br>21 3', T5: 21 Watt<br>24 2', T5HO: 24 Watt<br>25 3', T8: 25 Watt<br>28 4', T5: 28 Watt<br>32 4', T8: 32, 30, 28 or 25 Watt<br>39 3', T5HO: 39 Watt<br>48 4', 12<br>54 4', T5HO: 54 or 51 Watt<br>96 8', T12: 75 or 60 Watt<br>96T8 8', T8: 59 Watt | <b>NOTE:</b> See Technical Section for other ballast options.<br><b>E</b> Electronic T8, Instant Start<br><b>3E</b> 3-Lamp Electronic T8, Instant Start<br><b>24E</b> (1) 2-Lamp and (1) 4-Lamp Electronic T8, Instant Start<br><b>EP</b> Electronic T5 or T8, Programmed Start<br><b>3EP</b> 3-Lamp Electronic T5 or T8, Programmed Start | <b>U</b> 120V-277V<br><b>347</b> 347V | <b>BC1</b> Branch Circuit Wiring, Single Circuit (For more branch circuit wiring options see page 113)<br><b>GLR</b> Fast Blow Fuse<br><b>EL</b> Emergency Battery Pack<br><b>PAF</b> Paint After Fabrication |

### ACCESSORIES (ORDER SEPARATELY)

- CSWG3** 3' Wire Guard
- CSWG4** 4' Wire Guard
- CSR4** 4' Symmetric Reflector
- CSRA4** 4' Asymmetric Reflector
- CSRU4** 4' Symmetric Reflector 5% Uplight
- S18** 18" Stem, 8° Swivel Stem and Canopy
- SS18** 18", 45° Swivel Stem, and Canopy
- CSHC** Chain Hanger Assembly

For more accessories see pages 99-101.



### PRODUCT AVAILABILITY

| SIZE | NO. OF LAMPS IN CROSS SECTION | NO. OF LAMPS IN FIXTURE | LAMP TYPE      | WIDTH   | LENGTH | HEIGHT   |
|------|-------------------------------|-------------------------|----------------|---------|--------|----------|
| 2'   | 1                             | 1                       | 14, 17, 24     | 4 7/16" | 24"    | 1 13/16" |
|      | 2                             | 2                       | 14, 17, 24     | 4 7/16" | 24"    | 1 13/16" |
|      | 3                             | 3                       | 17             | 4 7/16" | 24"    | 1 13/16" |
| 3'   | 1                             | 1                       | 21, 25, 39     | 4 7/16" | 36"    | 1 13/16" |
|      | 2                             | 2                       | 21, 25, 39     | 4 7/16" | 36"    | 1 13/16" |
|      | 3                             | 3                       | 25             | 4 7/16" | 36"    | 1 13/16" |
| 4'   | 1                             | 1                       | 28, 32, 48, 54 | 4 7/16" | 48"    | 1 13/16" |
|      | 2                             | 2                       | 28, 32, 48, 54 | 4 7/16" | 48"    | 1 13/16" |
|      | 3                             | 3                       | 28, 32, 54     | 4 7/16" | 48"    | 1 13/16" |
| 6'   | 1                             | 2                       | 21, 25, 39     | 4 7/16" | 72"    | 1 13/16" |
|      | 2                             | 4                       | 21, 25, 39     | 4 7/16" | 72"    | 1 13/16" |
|      | 3                             | 6                       | 21, 25, 39     | 4 7/16" | 72"    | 1 13/16" |
| 8'   | 1                             | 2                       | 28, 32, 54     | 4 7/16" | 96"    | 1 13/16" |
|      | 1                             | 1                       | 96, 96T8       | 4 7/16" | 96"    | 1 13/16" |
|      | 2                             | 4                       | 28, 32, 54     | 4 7/16" | 96"    | 1 13/16" |
|      | 2                             | 2                       | 96, 96T8       | 4 7/16" | 96"    | 1 13/16" |
|      | 2                             | 6                       | 28, 32         | 4 7/16" | 96"    | 1 13/16" |
|      | 3                             | 6                       | 28, 32         | 4 7/16" | 96"    | 1 13/16" |
| 16'  | 1                             | 4                       | 28, 32, 54     | 4 7/16" | 192"   | 1 13/16" |
|      | 1                             | 2                       | 96, 96T8       | 4 7/16" | 192"   | 1 13/16" |
|      | 2                             | 8                       | 28, 32, 54     | 4 7/16" | 192"   | 1 13/16" |
|      | 2                             | 4                       | 96, 96T8       | 4 7/16" | 192"   | 1 13/16" |

## Straight-Sided Utility Channel



### FEATURES

- Die formed steel housing with heat sink embossments for cooler running ballasts
- Ballast cover retained by ¼ turn fasteners
- Individual or row mounting, surface or suspended
- Channel ends double as joiners
- All metal parts are treated with a five stage phosphate bonding process and finished with baked white enamel
- UL listed 1598, cUL or CSA. Damp Location standard

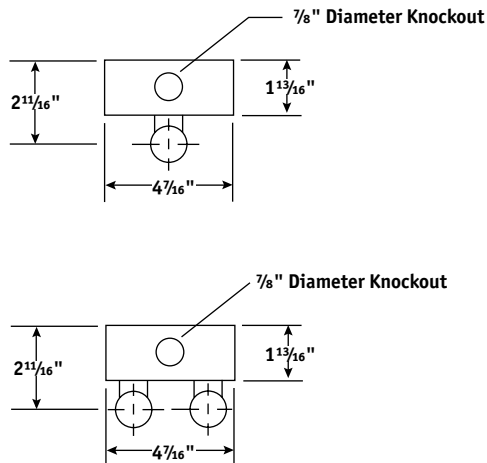
### ORDERING INFORMATION

| MODEL                                    | SIZE  | NO. OF LAMPS IN CROSS SECTION                                      | LAMP TYPE  | BALLAST  | VOLTAGE                               | OPTIONS   |
|--|---|--|--|--|---------------------------------------|---|
| <b>CS</b> Straight-Sided Utility Channel | 2 2'<br>3 3'<br>4 4'<br>6 6'<br>8 8'<br>16 16' (Two housings) | 1 One<br>2 Two<br>3 Three<br>See Product Availability table below. | 14 2', T5: 14 Watt<br>17 2', T8: 17 Watt<br>21 3', T5: 21 Watt<br>24 2', T5HO: 24 Watt<br>25 3', T8: 25 Watt<br>28 4', T5: 28 Watt<br>32 4', T8: 32, 30, 28 or 25 Watt<br>39 3', T5HO: 39 Watt<br>48 4', 12<br>54 4', T5HO: 54 or 51 Watt<br>96 8', T12: 75 or 60 Watt<br>96T8 8', T8: 59 Watt | <b>NOTE:</b> See Technical Section for other ballast options.<br><b>E</b> Electronic T8, Instant Start<br><b>3E</b> 3-Lamp Electronic T8, Instant Start<br><b>24E</b> (1) 2-Lamp and (1) 4-Lamp Electronic T8, Instant Start<br><b>EP</b> Electronic T5 or T8, Programmed Start<br><b>3EP</b> 3-Lamp Electronic T5 or T8, Programmed Start | <b>U</b> 120V-277V<br><b>347</b> 347V | <b>BC1</b> Branch Circuit Wiring, Single Circuit (For more branch circuit wiring options see page 113)<br><b>GLR</b> Fast Blow Fuse<br><b>EL</b> Emergency Battery Pack<br><b>PAF</b> Paint After Fabrication |

### ACCESSORIES (ORDER SEPARATELY)

- CSWG3** 3' Wire Guard
- CSWG4** 4' Wire Guard
- CSR4** 4' Symmetric Reflector
- CSRA4** 4' Asymmetric Reflector
- CSRU4** 4' Symmetric Reflector 5% Uplight
- S18** 18" Stem, 8° Swivel Stem and Canopy
- SS18** 18", 45° Swivel Stem, and Canopy
- CSHC** Chain Hanger Assembly

For more accessories see pages 99-101.



### PRODUCT AVAILABILITY

| SIZE | NO. OF LAMPS IN CROSS SECTION | NO. OF LAMPS IN FIXTURE | LAMP TYPE      | WIDTH   | LENGTH | HEIGHT   |
|------|-------------------------------|-------------------------|----------------|---------|--------|----------|
| 2'   | 1                             | 1                       | 14, 17, 24     | 4 7/16" | 24"    | 1 13/16" |
|      | 2                             | 2                       | 14, 17, 24     | 4 7/16" | 24"    | 1 13/16" |
|      | 3                             | 3                       | 17             | 4 7/16" | 24"    | 1 13/16" |
| 3'   | 1                             | 1                       | 21, 25, 39     | 4 7/16" | 36"    | 1 13/16" |
|      | 2                             | 2                       | 21, 25, 39     | 4 7/16" | 36"    | 1 13/16" |
|      | 3                             | 3                       | 25             | 4 7/16" | 36"    | 1 13/16" |
| 4'   | 1                             | 1                       | 28, 32, 48, 54 | 4 7/16" | 48"    | 1 13/16" |
|      | 2                             | 2                       | 28, 32, 48, 54 | 4 7/16" | 48"    | 1 13/16" |
|      | 3                             | 3                       | 28, 32, 54     | 4 7/16" | 48"    | 1 13/16" |
| 6'   | 1                             | 2                       | 21, 25, 39     | 4 7/16" | 72"    | 1 13/16" |
|      | 2                             | 4                       | 21, 25, 39     | 4 7/16" | 72"    | 1 13/16" |
|      | 3                             | 6                       | 21, 25, 39     | 4 7/16" | 72"    | 1 13/16" |
| 8'   | 1                             | 2                       | 28, 32, 54     | 4 7/16" | 96"    | 1 13/16" |
|      | 1                             | 1                       | 96, 96T8       | 4 7/16" | 96"    | 1 13/16" |
|      | 2                             | 4                       | 28, 32, 54     | 4 7/16" | 96"    | 1 13/16" |
|      | 2                             | 2                       | 96, 96T8       | 4 7/16" | 96"    | 1 13/16" |
|      | 2                             | 6                       | 28, 32         | 4 7/16" | 96"    | 1 13/16" |
|      | 3                             | 6                       | 28, 32         | 4 7/16" | 96"    | 1 13/16" |
| 16'  | 1                             | 4                       | 28, 32, 54     | 4 7/16" | 192"   | 1 13/16" |
|      | 1                             | 2                       | 96, 96T8       | 4 7/16" | 192"   | 1 13/16" |
|      | 2                             | 8                       | 28, 32, 54     | 4 7/16" | 192"   | 1 13/16" |
|      | 2                             | 4                       | 96, 96T8       | 4 7/16" | 192"   | 1 13/16" |