

Straight-Sided Utility Channel

FEATURES

- Die formed steel housing with heat sink embossments for cooler running ballasts
- Ballast cover retained by ¼ turn fasteners
- Individual or row mounting, surface or suspended
- Channel ends double as joiners
- All metal parts are treated with a five stage phosphate bonding process and finished with baked white enamel
- UL listed 1598, cUL or CSA. Damp Location standard



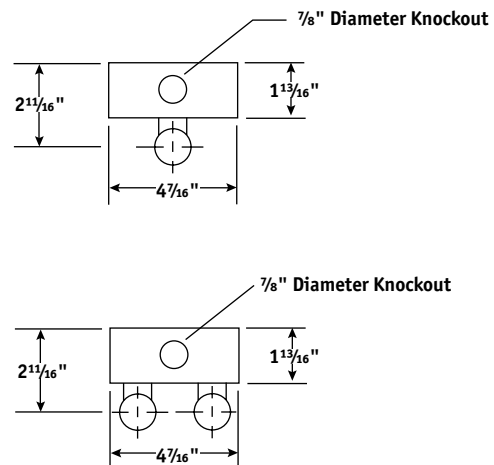
STRIPLIGHTS

ORDERING INFORMATION

MODEL	SIZE	NO. OF LAMPS IN CROSS SECTION	LAMP TYPE	BALLAST	VOLTAGE	OPTIONS
CS Straight-Sided Utility Channel	2 2' 3 3' 4 4' 6 6' 8 8' 16 16' (Two housings)	1 One 2 Two 3 Three See Product Availability table below.	14 2', T5: 14 Watt 17 2', T8: 17 Watt 21 3', T5: 21 Watt 24 2', T5HO: 24 Watt 25 3', T8: 25 Watt 28 4', T5: 28 Watt 32 4', T8: 32, 30, 28 or 25 Watt 39 3', T5HO: 39 Watt 54 4', T5HO: 54 or 51 Watt 96 8', T12: 75 or 60 Watt 96T8 8', T8: 59 Watt	NOTE: See Technical Section for other ballast options. E Electronic T8, Instant Start 3E 3-Lamp Electronic T8, Instant Start 4E 4-Lamp Electronic T8, Instant Start 24E (1) 2-Lamp and (1) 4-Lamp Electronic T8, Instant Start EP Electronic T5 or T8, Programmed Start 3EP 3-Lamp Electronic T5 or T8, Programmed Start 4EP 4-Lamp Electronic T5HO (N/A 347V) or T8, Programmed Start	U 120V-277V 347 347V	BC1 Branch Circuit Wiring, Single Circuit (For more branch circuit wiring options see page 113) GLR Fast Blow Fuse EL Emergency Battery Pack PAF Paint After Fabrication NYC NYC Compliant NYCU NYC Compliant, Union Label
ACCESSORIES (ORDER SEPARATELY)						
CSWG3 3' Wire Guard						
CSWG4 4' Wire Guard						
CSR4 4' Symmetric Reflector						
CSRA4 4' Asymmetric Reflector						
CSRU4 4' Symmetric Reflector 5% Uplight						
S18 18" Stem, 8° Swivel Stem and Canopy						
SS18 18", 45° Swivel Stem, and Canopy						
CSHC Chain Hanger Assembly						

PRODUCT AVAILABILITY

SIZE	NO. OF LAMPS IN CROSS SECTION	NO. OF LAMPS IN FIXTURE	LAMP TYPE	WIDTH	LENGTH	HEIGHT
2'	1	1	14, 17, 24	4 ⁷ / ₁₆ "	24"	1 ¹³ / ₁₆ "
	2	2	14, 17, 24	4 ⁷ / ₁₆ "	24"	1 ¹³ / ₁₆ "
	3	3	17	4 ⁷ / ₁₆ "	24"	1 ¹³ / ₁₆ "
3'	1	1	21, 25, 39	4 ⁷ / ₁₆ "	36"	1 ¹³ / ₁₆ "
	2	2	21, 25, 39	4 ⁷ / ₁₆ "	36"	1 ¹³ / ₁₆ "
	3	3	25	4 ⁷ / ₁₆ "	36"	1 ¹³ / ₁₆ "
4'	1	1	28, 32, 54	4 ⁷ / ₁₆ "	48"	1 ¹³ / ₁₆ "
	2	2	28, 32, 54	4 ⁷ / ₁₆ "	48"	1 ¹³ / ₁₆ "
	3	3	28, 32, 54	4 ⁷ / ₁₆ "	48"	1 ¹³ / ₁₆ "
6'	1	1	21, 25, 39	4 ⁷ / ₁₆ "	72"	1 ¹³ / ₁₆ "
	2	2	21, 25, 39	4 ⁷ / ₁₆ "	72"	1 ¹³ / ₁₆ "
	3	6	21, 25, 39	4 ⁷ / ₁₆ "	72"	1 ¹³ / ₁₆ "
8'	1	2	28, 32, 54	4 ⁷ / ₁₆ "	96"	1 ¹³ / ₁₆ "
	1	1	54, 96T8	4 ⁷ / ₁₆ "	96"	1 ¹³ / ₁₆ "
	2	4	28, 32, 54	4 ⁷ / ₁₆ "	96"	1 ¹³ / ₁₆ "
	2	2	54, 96T8	4 ⁷ / ₁₆ "	96"	1 ¹³ / ₁₆ "
	2	2	28, 32	4 ⁷ / ₁₆ "	96"	1 ¹³ / ₁₆ "
	3	6	28, 32	4 ⁷ / ₁₆ "	96"	1 ¹³ / ₁₆ "
16'	1	4	28, 32, 54	4 ⁷ / ₁₆ "	192"	1 ¹³ / ₁₆ "
	1	2	54, 96T8	4 ⁷ / ₁₆ "	192"	1 ¹³ / ₁₆ "
	2	8	28, 32, 54	4 ⁷ / ₁₆ "	192"	1 ¹³ / ₁₆ "
	2	2	54, 96T8	4 ⁷ / ₁₆ "	192"	1 ¹³ / ₁₆ "
	2	4	28, 32	4 ⁷ / ₁₆ "	192"	1 ¹³ / ₁₆ "



Straight-Sided Utility Channel

FEATURES

- Die formed steel housing with heat sink embossments for cooler running ballasts
- Ballast cover retained by ¼ turn fasteners
- Individual or row mounting, surface or suspended
- Channel ends double as joiners
- All metal parts are treated with a five stage phosphate bonding process and finished with baked white enamel
- UL listed 1598, cUL or CSA. Damp Location standard



STRIPLIGHTS

ORDERING INFORMATION

MODEL	SIZE	NO. OF LAMPS IN CROSS SECTION	LAMP TYPE	BALLAST	VOLTAGE	OPTIONS
CS Straight-Sided Utility Channel	2 2' 3 3' 4 4' 6 6' 8 8' 16 16' (Two housings)	1 One 2 Two 3 Three See Product Availability table below.	14 2', T5: 14 Watt 17 2', T8: 17 Watt 21 3', T5: 21 Watt 24 2', T5HO: 24 Watt 25 3', T8: 25 Watt 28 4', T5: 28 Watt 32 4', T8: 32, 30, 28 or 25 Watt 39 3', T5HO: 39 Watt 54 4', T5HO: 54 or 51 Watt 96 8', T12: 75 or 60 Watt 96T8 8', T8: 59 Watt	NOTE: See Technical Section for other ballast options. E Electronic T8, Instant Start 3E 3-Lamp Electronic T8, Instant Start 4E 4-Lamp Electronic T8, Instant Start 24E (1) 2-Lamp and (1) 4-Lamp Electronic T8, Instant Start EP Electronic T5 or T8, Programmed Start 3EP 3-Lamp Electronic T5 or T8, Programmed Start 4EP 4-Lamp Electronic T5HO (N/A 347V) or T8, Programmed Start	U 120V-277V 347 347V	BC1 Branch Circuit Wiring, Single Circuit (For more branch circuit wiring options see page 113) GLR Fast Blow Fuse EL Emergency Battery Pack PAF Paint After Fabrication NYC NYC Compliant NYCU NYC Compliant, Union Label
ACCESSORIES (ORDER SEPARATELY)						
CSWG3 3' Wire Guard						
CSWG4 4' Wire Guard						
CSR4 4' Symmetric Reflector						
CSRA4 4' Asymmetric Reflector						
CSRU4 4' Symmetric Reflector 5% Uplight						
S18 18" Stem, 8° Swivel Stem and Canopy						
SS18 18", 45° Swivel Stem, and Canopy						
CSHC Chain Hanger Assembly						

PRODUCT AVAILABILITY

SIZE	NO. OF LAMPS IN CROSS SECTION	NO. OF LAMPS IN FIXTURE	LAMP TYPE	WIDTH	LENGTH	HEIGHT
2'	1	1	14, 17, 24	4 ⁷ / ₁₆ "	24"	1 ¹³ / ₁₆ "
	2	2	14, 17, 24	4 ⁷ / ₁₆ "	24"	1 ¹³ / ₁₆ "
	3	3	17	4 ⁷ / ₁₆ "	24"	1 ¹³ / ₁₆ "
3'	1	1	21, 25, 39	4 ⁷ / ₁₆ "	36"	1 ¹³ / ₁₆ "
	2	2	21, 25, 39	4 ⁷ / ₁₆ "	36"	1 ¹³ / ₁₆ "
	3	3	25	4 ⁷ / ₁₆ "	36"	1 ¹³ / ₁₆ "
4'	1	1	28, 32, 54	4 ⁷ / ₁₆ "	48"	1 ¹³ / ₁₆ "
	2	2	28, 32, 54	4 ⁷ / ₁₆ "	48"	1 ¹³ / ₁₆ "
	3	3	28, 32, 54	4 ⁷ / ₁₆ "	48"	1 ¹³ / ₁₆ "
6'	1	1	21, 25, 39	4 ⁷ / ₁₆ "	72"	1 ¹³ / ₁₆ "
	2	2	21, 25, 39	4 ⁷ / ₁₆ "	72"	1 ¹³ / ₁₆ "
	3	6	21, 25, 39	4 ⁷ / ₁₆ "	72"	1 ¹³ / ₁₆ "
8'	1	2	28, 32, 54	4 ⁷ / ₁₆ "	96"	1 ¹³ / ₁₆ "
	1	1	54, 96T8	4 ⁷ / ₁₆ "	96"	1 ¹³ / ₁₆ "
	2	4	28, 32, 54	4 ⁷ / ₁₆ "	96"	1 ¹³ / ₁₆ "
	2	2	54, 96T8	4 ⁷ / ₁₆ "	96"	1 ¹³ / ₁₆ "
	3	6	28, 32	4 ⁷ / ₁₆ "	96"	1 ¹³ / ₁₆ "
16'	1	4	28, 32, 54	4 ⁷ / ₁₆ "	192"	1 ¹³ / ₁₆ "
	1	2	54, 96T8	4 ⁷ / ₁₆ "	192"	1 ¹³ / ₁₆ "
	2	8	28, 32, 54	4 ⁷ / ₁₆ "	192"	1 ¹³ / ₁₆ "
	2	4	54, 96T8	4 ⁷ / ₁₆ "	192"	1 ¹³ / ₁₆ "

