



Powering Business Worldwide

pe.eaton.com

D3 Series Socket

D3PA2

UPC:782114159767

Dimensions:

- **Height:** .97 IN
- **Length:** 2.02 IN
- **Width:** 1.6 IN

Weight:.07 LB

Warranties:

- Eaton Selling Policy 25-000, one (1) year from the date of installation of the Product or eighteen (18) months from the date of shipment of the Product, whichever occurs first.

Specifications:

- **Type:** D3 Series Socket
- **Mounting:** DIN rail, screw
- **Nominal Voltage:** 300/600V
- **Quantity:** 10
- **Rated Operational Current:** 10/15A nominal
- **Series:** D3 series
- **Used With:** D3PR2 and D3PF2 relays, TMR5 and TRM6 time delay relays, and TRNP timing relays
- **Wiring Connection:** Screw clamping

Supporting documents:

- [Eatons Volume 5-Motor Control and Protection](#)
- [D3PA2 3D Inventor](#)
- [D3PA2 2D Drawing Xchange](#)
- [D3PA2 AutoCAD 2D Footprint](#)
- [D3PA2 2D PDF](#)
- [D3PA2 3D Model Xchange](#)
- [D3PA2 AutoCAD 2D Footprint \(mm\)](#)
- [Eaton Specification Sheet - D3PA2](#)

Certifications:



- CSA Certified
- UL Listed
- cRUus

Product compliance:

- RoHS Compliant
- CE Marked

© 2016 Eaton. All rights reserved.



Powering Business Worldwide

pe.eaton.com

D3 Series Socket

D3PA2

UPC:782114159767

Dimensions:

- **Height:** .97 IN
- **Length:** 2.02 IN
- **Width:** 1.6 IN

Weight:.07 LB

Warranties:

- Eaton Selling Policy 25-000, one (1) year from the date of installation of the Product or eighteen (18) months from the date of shipment of the Product, whichever occurs first.

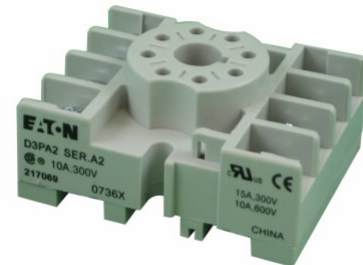
Specifications:

- **Type:** D3 Series Socket
- **Mounting:** DIN rail, screw
- **Nominal Voltage:** 300/600V
- **Quantity:** 10
- **Rated Operational Current:** 10/15A nominal
- **Series:** D3 series
- **Used With:** D3PR2 and D3PF2 relays, TMR5 and TRM6 time delay relays, and TRNP timing relays
- **Wiring Connection:** Screw clamping

Supporting documents:

- [Eatons Volume 5-Motor Control and Protection](#)
- [D3PA2 3D Inventor](#)
- [D3PA2 2D Drawing Xchange](#)
- [D3PA2 AutoCAD 2D Footprint](#)
- [D3PA2 2D PDF](#)
- [D3PA2 3D Model Xchange](#)
- [D3PA2 AutoCAD 2D Footprint \(mm\)](#)
- [Eaton Specification Sheet - D3PA2](#)

Certifications:



- CSA Certified
- UL Listed
- cRUus

Product compliance:

- RoHS Compliant
- CE Marked

© 2016 Eaton. All rights reserved.