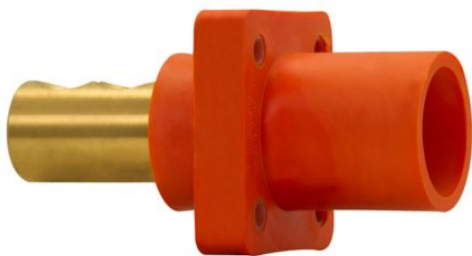


Eaton E1016-1701

Catalog Number: E1016-1701

Eaton Crouse-Hinds series Cam-Lok J Series E1016 insulated receptacle, Up to 400A continuous, 1/0-4/0 AWG, Yellow, Double set screw, Male, Thermoplastic elastomer (TPE), 600 Vac/dc

General specifications



Product Name	Catalog Number
Eaton Crouse-Hinds series Cam-Lok J Series E1016 insulated receptacle	E1016-1701
	UPC
	662275128843
Product Length/Depth	Product Height
4.25 in	2.25 in
Product Width	Product Weight
2.25 in	1 lb

Certifications and compliances

Area classification

Ordinary/Non-Hazardous Locations

Standards type

NEC/CEC

NEMA Rating

3R

Product specifications

Cable size

1/0-4/0 AWG

Amperage Rating

Up to 400A Continuous

Voltage rating

600 Vac/dc

Material

Thermoplastic elastomer (TPE)

Connection type

Double set screw

Gender

Male

Color

Yellow

Resources

Brochures

[Cam-Lok Single Pole Plugs and Receptacles catalog](#)

Catalogs

[Cam-Lok J Series Single Pole Plugs and Receptacles catalog page](#)

Installation instructions

[EB 141 - Cam-Lok E1015 and E1016 Molded to Cable Connectors](#)

[IM 1039 - Cam-Lok E1016 and E1018 Panel Mount Receptacles](#)

[IM 1004 - Cam-Lok E1016 and E1018 Double Set Screw](#)

[EB 9 - Cam-Lok E1016 and E1018 Connectors](#)

Specifications and datasheets

[Eaton Specification Sheet - E1016-1701](#)



Eaton Corporation plc
Eaton House
30 Pembroke Road
Dublin 4, Ireland
Eaton.com
© 2023 Eaton. All Rights Reserved.

Eaton is a registered trademark.

All other trademarks are property of their respective owners.



[Eaton.com/socialmedia](https://www.eaton.com/socialmedia)