

# Condulet® EAB Series Conduit Outlet Boxes with Covers

Cl. I, Div. 1 & 2, Groups A, B, C, D  
Cl. II, Div. 1, Groups E, F, G  
Cl. II, Div. 2, Groups F, G  
Cl. III  
NEMA 3, 4, 7ABCD, 9EFG

Explosionproof  
Dust-ignitionproof  
Raintight  
Wet Locations

3F

## Applications:

EAB Series Conduit Outlet Boxes are installed in conduit systems within hazardous areas to:

- Provide protection against exterior explosion where acetylene, hydrogen and other hazardous gases are present
- Protect conductors in threaded rigid conduit
- Act as pull and splice boxes
- Interconnect lengths of conduit
- Change conduit direction
- Provide access to conductors for maintenance and future system changes

## Features:

EAB Series Conduit Outlet Boxes have:

- Five different hub configurations
- Taper threaded hubs to provide ground continuity
- Smooth integral hub bushing to protect conductor insulation when pulling
- Threaded cover openings
- Surface covers furnished with boxes
- Neoprene o-ring gasket and green ground screw are both standard
- Four standard mounting pads, except for EABY
- Cover threads are 16 pitch
- Internal green ground screw #10

## Certifications and Compliances:

### NEC/CEC:

- Class I, Divisions 1 & 2, Groups A, B, C, D
- Class II, Division 1, Groups E, F, G
- Class II, Division 2, Groups F, G
- Class III

### UL Standard:

- UL1203

### CSA Standard:

- C22.2 No. 30

## Standard Materials:

- Bodies – Feraloy® iron alloy
- Covers – Copper-free aluminum

## Standard Finishes:

- Feraloy – electrogalvanized and aluminum acrylic paint
- Aluminum – natural

## Size Ranges:

- Hub – 1/2" to 1"
- Cover opening – 3" diameter

**A** Available in copper-free aluminum. To order, add suffix 'SA' to end of catalog number.

**B** EAB0687 is listed for Groups C and D only.

## Options:

### Description

### Suffix

- Bodies – copper-free aluminum ..... **SA**
- Covers – Feraloy iron alloy..... **WOD**  
*Electrogalvanized and aluminum acrylic paint finish*
- Corro-free™ epoxy powder coat..... **S752**

## Ordering Information:

### EABC



Hub Size	Cat. #
1/2"	EABC16 <sup>A</sup>
3/4"	EABC26 <sup>A</sup>
1"	EABC36 <sup>A</sup>

### EABT



Hub Size	Cat. #
1/2"	EABT16 <sup>A</sup>
3/4"	EABT26 <sup>A</sup>
1"	EABT36 <sup>A</sup>

### EABL



Hub Size	Cat. #
1/2"	EABL16 <sup>A</sup>
3/4"	EABL26 <sup>A</sup>
1"	EABL36 <sup>A</sup>

### EABX



Hub Size	Cat. #
1/2"	EABX16 <sup>A</sup>
3/4"	EABX26 <sup>A</sup>
1"	EABX36 <sup>A</sup>

### EABY



Hub Size	Cat. #
1/2"	EABY16
3/4"	EABY26

## Replacement Cover

Size	Cat. #
3"	EAB06

## Replacement O-ring Gasket

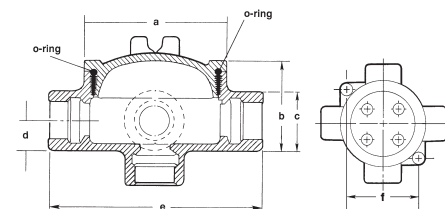
Description	Cat. #
Replacement O-ring	GASK1151

## Fixture Cover Union Hub Type



Cover Opening Dia.	Fixt. Stem Size	Cat. #
3"	3/4"	EAB0687 <sup>B</sup>

## Dimensions (in Inches):



Cat. #	a	b	c	d	e	f
16	3 <sup>3</sup> / <sub>4</sub>	2 <sup>17</sup> / <sub>32</sub>	1 <sup>1</sup> / <sub>2</sub>	3/4	5 <sup>9</sup> / <sub>16</sub>	3 <sup>3</sup> / <sub>32</sub>
26	3 <sup>3</sup> / <sub>4</sub>	2 <sup>25</sup> / <sub>32</sub>	1 <sup>3</sup> / <sub>4</sub>	7/8	5 <sup>9</sup> / <sub>16</sub>	3 <sup>7</sup> / <sub>32</sub>
36	3 <sup>3</sup> / <sub>4</sub>	2 <sup>25</sup> / <sub>32</sub>	1 <sup>3</sup> / <sub>4</sub>	7/8	5 <sup>9</sup> / <sub>16</sub>	3 <sup>7</sup> / <sub>32</sub>

## Factory Installed Terminal Block Ordering Guide

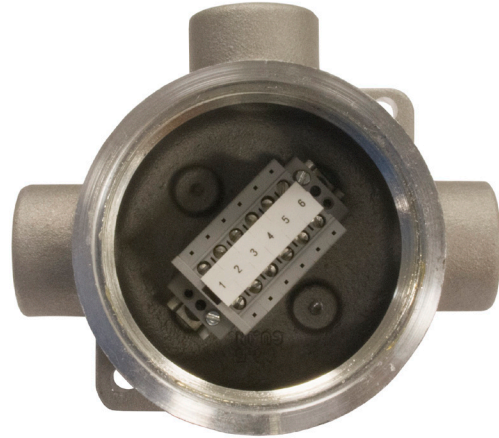
### Ordering Information:

#### DIN Rail Mounted Terminal Blocks

##### Electrical Specifications:

30 Amp, 150V, AWG 26-10

Cat. #	Description
DIN12	DIN Rail Mounted, 2 Terminal Blocks EAB (Shapes C, X, T, L) Form 6 Cover Dia. Opening
DIN13	DIN Rail Mounted, 3 Terminal Blocks EAB (Shapes C, X, T, L) Form 6 Cover Dia. Opening
DIN14	DIN Rail Mounted, 4 Terminal Blocks EAB (Shapes C, X, T, L) Form 6 Cover Dia. Opening

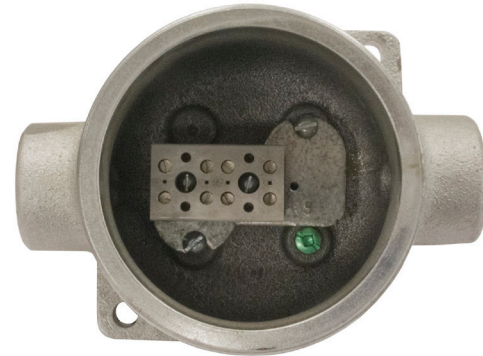


#### Direct Mounted Terminal Blocks

##### Electrical Specifications:

30 Amp, 300V, AWG 26-10

Cat. #	Description
TB14	Direct Mounted Terminal Block, 4 Terminal Blocks EAB (Shapes C, X, T, L) Form 6 Cover Dia. Opening
TB16	Direct Mounted Terminal Block, 6 Terminal Blocks EAB (Shapes C, X, T, L) Form 6 Cover Dia. Opening



# Condulet® EAB Series Conduit Outlet Boxes with Covers

Cl. I, Div. 1 & 2, Groups A, B, C, D  
Cl. II, Div. 1, Groups E, F, G  
Cl. II, Div. 2, Groups F, G  
Cl. III  
NEMA 3, 4, 7ABCD, 9EFG

Explosionproof  
Dust-ignitionproof  
Raintight  
Wet Locations

3F

## Applications:

EAB Series Conduit Outlet Boxes are installed in conduit systems within hazardous areas to:

- Provide protection against exterior explosion where acetylene, hydrogen and other hazardous gases are present
- Protect conductors in threaded rigid conduit
- Act as pull and splice boxes
- Interconnect lengths of conduit
- Change conduit direction
- Provide access to conductors for maintenance and future system changes

## Features:

EAB Series Conduit Outlet Boxes have:

- Five different hub configurations
- Taper threaded hubs to provide ground continuity
- Smooth integral hub bushing to protect conductor insulation when pulling
- Threaded cover openings
- Surface covers furnished with boxes
- Neoprene o-ring gasket and green ground screw are both standard
- Four standard mounting pads, except for EABY
- Cover threads are 16 pitch
- Internal green ground screw #10

## Certifications and Compliances:

### NEC/CEC:

- Class I, Divisions 1 & 2, Groups A, B, C, D
- Class II, Division 1, Groups E, F, G
- Class II, Division 2, Groups F, G
- Class III

### UL Standard:

- UL1203

### CSA Standard:

- C22.2 No. 30

## Standard Materials:

- Bodies – Feraloy® iron alloy
- Covers – Copper-free aluminum

## Standard Finishes:

- Feraloy – electrogalvanized and aluminum acrylic paint
- Aluminum – natural

## Size Ranges:

- Hub – 1/2" to 1"
- Cover opening – 3" diameter

**A** Available in copper-free aluminum. To order, add suffix 'SA' to end of catalog number.

**B** EAB0687 is listed for Groups C and D only.

## Options:

### Description

### Suffix

- Bodies – copper-free aluminum ..... **SA**
- Covers – Feraloy iron alloy..... **WOD**  
*Electrogalvanized and aluminum acrylic paint finish*
- Corro-free™ epoxy powder coat..... **S752**

## Ordering Information:

### EABC



Hub Size	Cat. #
1/2"	EABC16 <sup>A</sup>
3/4"	EABC26 <sup>A</sup>
1"	EABC36 <sup>A</sup>

### EABT



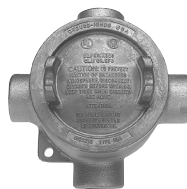
Hub Size	Cat. #
1/2"	EABT16 <sup>A</sup>
3/4"	EABT26 <sup>A</sup>
1"	EABT36 <sup>A</sup>

### EABL



Hub Size	Cat. #
1/2"	EABL16 <sup>A</sup>
3/4"	EABL26 <sup>A</sup>
1"	EABL36 <sup>A</sup>

### EABX



Hub Size	Cat. #
1/2"	EABX16 <sup>A</sup>
3/4"	EABX26 <sup>A</sup>
1"	EABX36 <sup>A</sup>

### EABY



Hub Size	Cat. #
1/2"	EABY16
3/4"	EABY26

## Replacement Cover

Size	Cat. #
3"	EAB06

## Replacement O-ring Gasket

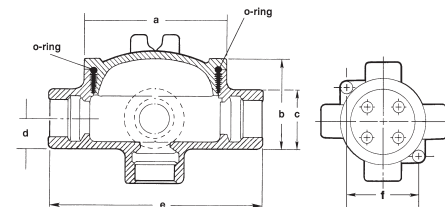
Description	Cat. #
Replacement O-ring	GASK1151

## Fixture Cover Union Hub Type



Cover Opening Dia.	Fixt. Stem Size	Cat. #
3"	3/4"	EAB0687 <sup>B</sup>

## Dimensions (in Inches):



Cat. #	a	b	c	d	e	f
16	3 <sup>3</sup> / <sub>4</sub>	2 <sup>17</sup> / <sub>32</sub>	1 <sup>1</sup> / <sub>2</sub>	3/4	5 <sup>9</sup> / <sub>16</sub>	3 <sup>3</sup> / <sub>32</sub>
26	3 <sup>3</sup> / <sub>4</sub>	2 <sup>25</sup> / <sub>32</sub>	1 <sup>3</sup> / <sub>4</sub>	7/8	5 <sup>9</sup> / <sub>16</sub>	3 <sup>7</sup> / <sub>32</sub>
36	3 <sup>3</sup> / <sub>4</sub>	2 <sup>25</sup> / <sub>32</sub>	1 <sup>3</sup> / <sub>4</sub>	7/8	5 <sup>9</sup> / <sub>16</sub>	3 <sup>7</sup> / <sub>32</sub>

## Factory Installed Terminal Block Ordering Guide

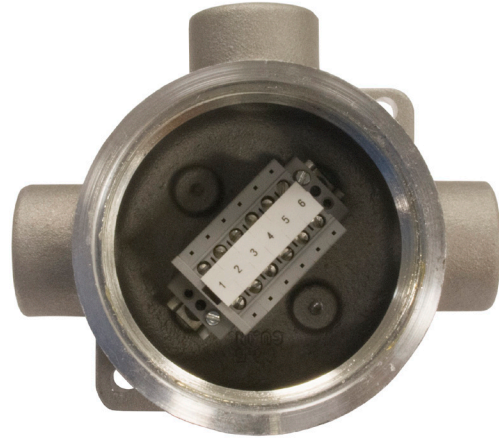
### Ordering Information:

#### DIN Rail Mounted Terminal Blocks

##### Electrical Specifications:

30 Amp, 150V, AWG 26-10

Cat. #	Description
DIN12	DIN Rail Mounted, 2 Terminal Blocks EAB (Shapes C, X, T, L) Form 6 Cover Dia. Opening
DIN13	DIN Rail Mounted, 3 Terminal Blocks EAB (Shapes C, X, T, L) Form 6 Cover Dia. Opening
DIN14	DIN Rail Mounted, 4 Terminal Blocks EAB (Shapes C, X, T, L) Form 6 Cover Dia. Opening



#### Direct Mounted Terminal Blocks

##### Electrical Specifications:

30 Amp, 300V, AWG 26-10

Cat. #	Description
TB14	Direct Mounted Terminal Block, 4 Terminal Blocks EAB (Shapes C, X, T, L) Form 6 Cover Dia. Opening
TB16	Direct Mounted Terminal Block, 6 Terminal Blocks EAB (Shapes C, X, T, L) Form 6 Cover Dia. Opening

