

**NEW!**  
more on  
reverse

# Gangable Plastic Box

*Snap Together the Multiple-Gang Box You Need – Fast!*

**Have This?**



TWO-GANG

**Need This?**



FOUR-GANG

Forget the old, time-consuming way of making a multiple-gang steel box out of several single-gang steel boxes. Arlington's GANGABLE plastic boxes save time and money – you'll save more than 1-1/2 minutes on a four-gang box alone! And they cost less than steel boxes.

Now you can build the box you need – *when you need it* – just by snapping the ends and center section(s) together.

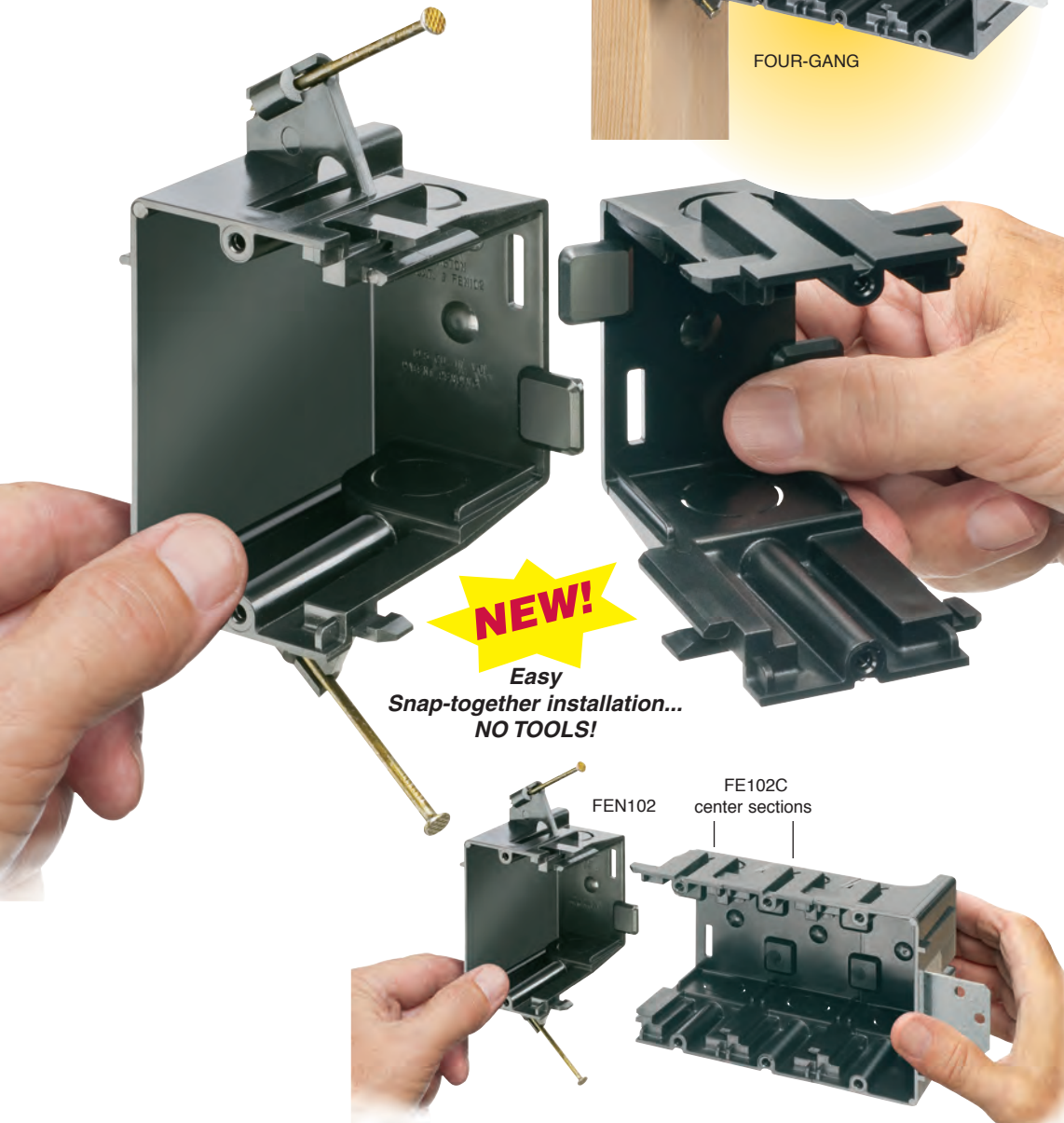
The two-piece, nail-on FEN102 (shown), screw-on FES102 or FER102 for old work, make a two-gang box. But if you need a three-gang to ten-gang box, just add the number of center sections needed to create the new, larger box.

The box mounts on a stud for an extra-secure installation. It also includes an (unassembled) adjustable steel bracket, that mounts to the unsupported side of the box for additional support of a larger box.

- Use a screwdriver to disassemble or separate the parts. Add or remove the center section(s), then snap the pieces back together... fast and easy!
- Great-looking installation of multiple gang boxes
- Nail or screw-on styles for new construction
- For old work, mounting wings hold the box securely against the wall
- UL Listed



**NEW!**  
Easy  
Snap-together installation...  
NO TOOLS!



FEN102  
FE102C  
center sections



**Arlington**



1 Stauffer Industrial Park  
Scranton, PA 18517  
**800/233.4717**  
**Fax 570/562.0646**  
[www.aifittings.com](http://www.aifittings.com)  
[www.arlnew.com](http://www.arlnew.com)

# Gangable Plastic Box

*Build the Box You Need • No Tools! • Saves Time & Money*

## New Construction - Nail on



FEN102

## New Construction - Screw on



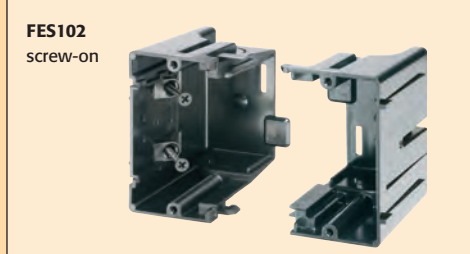
FES102, FE102C

## For Old Work Mounting wing screws hold box securely against the wall



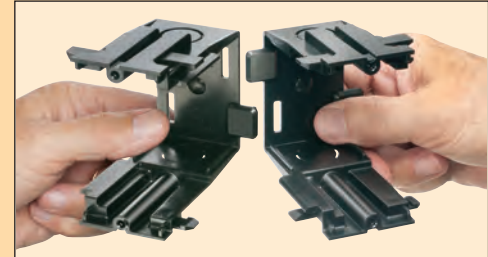
FER102, FE102C

## Here's How the Gangable Box Works...

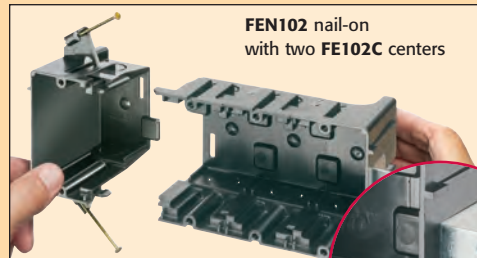


FES102 screw-on

1 Start with a two-gang FEN102, FES102 or FER102. Determine how many gangs you need.

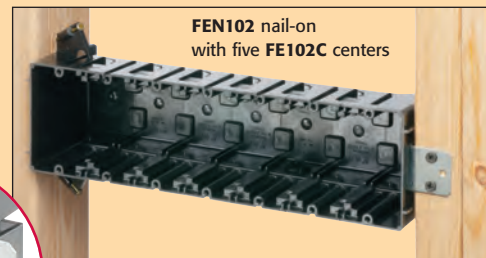


2 Each center section adds one gang to the box. Snap the number of centers necessary to make a new, larger box, from three- to ten-gangs!



FEN102 nail-on with two FE102C centers

3 Snap the ends of the original two-gang box to each side of the center section assembly.



FEN102 nail-on with five FE102C centers

4 For additional support of a larger box, attach the supplied steel bracket to the unsupported side of the box. Attach the bracket to an additional 2x4 as shown.



**Note** To disassemble or separate the parts, insert a screwdriver between the tabs at the top of the box (on each side) and twist.

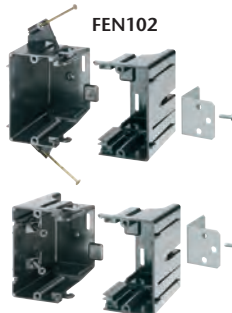


Use the **OPTIONAL** FE102D voltage divider for power and low voltage in the same box



**Arlington**

1 Stauffer Industrial Park  
Scranton, PA 18517  
**800/233.4717**  
**Fax 570/562.0646**  
[www.aifittings.com](http://www.aifittings.com)  
[www.arlnew.com](http://www.arlnew.com)



FEN102



FES102



FE102C



FER102



FE102C

FE102D

Patents pending  
FE series 1010/25M

Catalog Number	UPC/DEI/NAED Mfg. #018997	FE Series Gangable Box	Attachment Method /Application	Unit Pkg	Std Pkg
FEN102	01578	Two gang (includes bracket)	Nail-on for New Construction	1	10
FES102	01577	Two gang (includes bracket)	Screw-on for New Construction	1	10
FE102C	01579	Each adds one gang	Center Section for FEN102 and FES102	10	10
FER102	01575	Two-gang	w/ Mounting Wing Screws – Old Work	1	10
FER102C	01576	Each adds one gang	Center Section for Old Work FER102	10	10
FE102D	01586	Voltage Divider	OPTIONAL	25	25

Distributed by

**NEW!**  
more on  
reverse

# Gangable Plastic Box

*Snap Together the Multiple-Gang Box You Need – Fast!*



TWO-GANG



FOUR-GANG

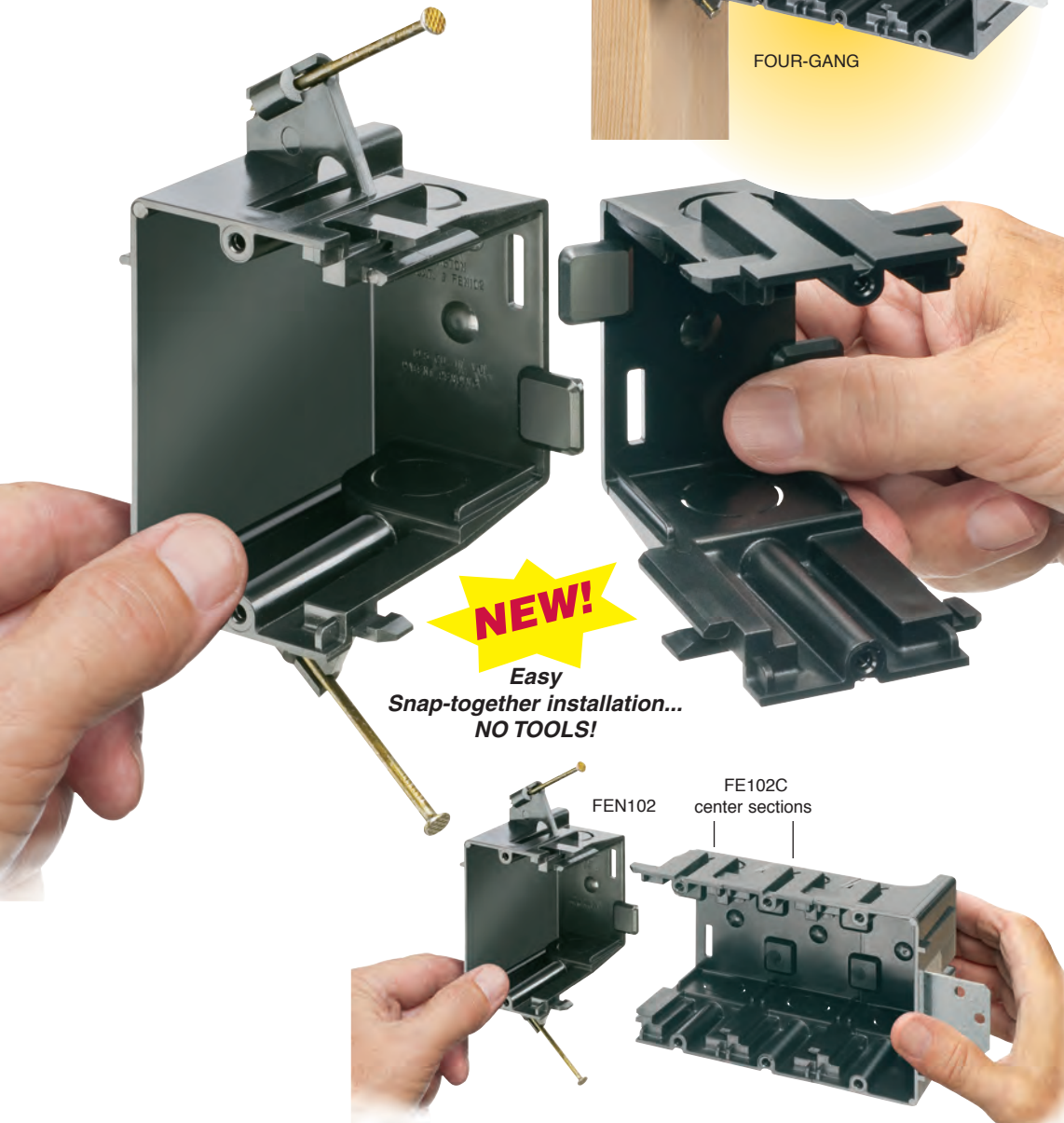
Forget the old, time-consuming way of making a multiple-gang steel box out of several single-gang steel boxes. Arlington's GANGABLE plastic boxes save time and money – you'll save more than 1-1/2 minutes on a four-gang box alone! And they cost less than steel boxes.

Now you can build the box you need – *when you need it* – just by snapping the ends and center section(s) together.

The two-piece, nail-on FEN102 (shown), screw-on FES102 or FER102 for old work, make a two-gang box. But if you need a three-gang to ten-gang box, just add the number of center sections needed to create the new, larger box.

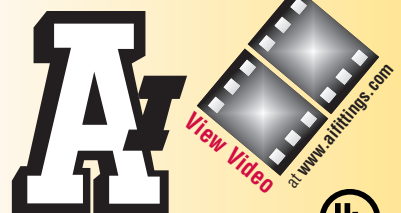
The box mounts on a stud for an extra-secure installation. It also includes an (unassembled) adjustable steel bracket, that mounts to the unsupported side of the box for additional support of a larger box.

- Use a screwdriver to disassemble or separate the parts. Add or remove the center section(s), then snap the pieces back together... fast and easy!
- Great-looking installation of multiple gang boxes
- Nail or screw-on styles for new construction
- For old work, mounting wings hold the box securely against the wall
- UL Listed



**NEW!**  
Easy  
Snap-together installation...  
NO TOOLS!

FEN102  
FE102C  
center sections



**Arlington** 

1 Stauffer Industrial Park  
Scranton, PA 18517  
**800/233.4717**  
**Fax 570/562.0646**  
[www.aifittings.com](http://www.aifittings.com)  
[www.arlnew.com](http://www.arlnew.com)

# Gangable Plastic Box

*Build the Box You Need • No Tools! • Saves Time & Money*

## New Construction - Nail on



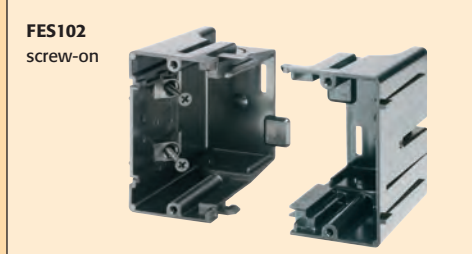
## New Construction - Screw on



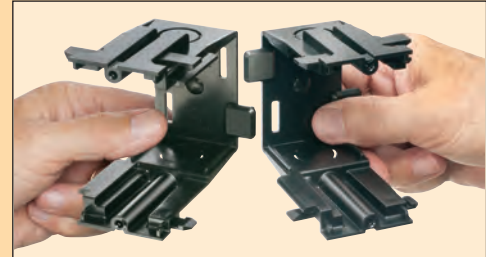
## For Old Work Mounting wing screws hold box securely against the wall



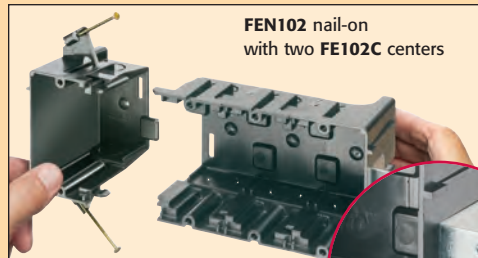
## Here's How the Gangable Box Works...



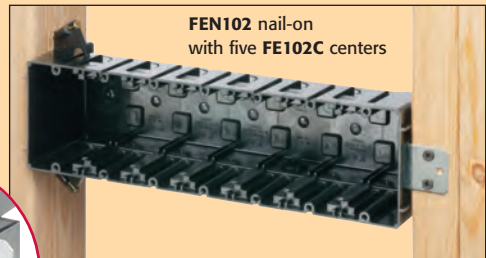
1 Start with a two-gang FEN102, FES102 or FER102. Determine how many gangs you need.



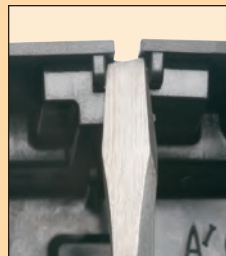
2 Each center section adds one gang to the box. Snap the number of centers necessary to make a new, larger box, from three- to ten-gangs!



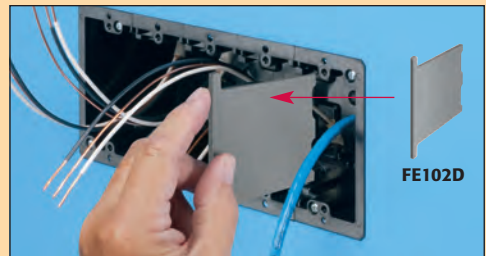
3 Snap the ends of the original two-gang box to each side of the center section assembly.



4 For additional support of a larger box, attach the supplied steel bracket to the unsupported side of the box. Attach the bracket to an additional 2x4 as shown.



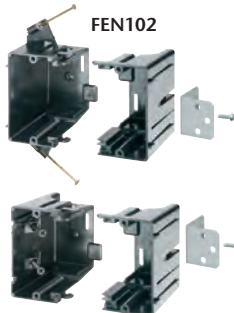
**Note** To disassemble or separate the parts, insert a screwdriver between the tabs at the top of the box (on each side) and twist.



Use the **OPTIONAL** FE102D voltage divider for power and low voltage in the same box



1 Stauffer Industrial Park  
Scranton, PA 18517  
**800/233.4717**  
**Fax 570/562.0646**  
[www.aifittings.com](http://www.aifittings.com)  
[www.arlnew.com](http://www.arlnew.com)



FEN102



FE102C



FER102



FE102C

FE102D

Patents pending  
FE series 1010/25M

Catalog Number	UPC/DEI/NAED Mfg. #018997	FE Series Gangable Box	Attachment Method /Application	Unit Pkg	Std Pkg
FEN102	01578	Two gang (includes bracket)	Nail-on for New Construction	1	10
FES102	01577	Two gang (includes bracket)	Screw-on for New Construction	1	10
FE102C	01579	Each adds one gang	Center Section for FEN102 and FES102	10	10
FER102	01575	Two-gang	w/ Mounting Wing Screws – Old Work	1	10
FER102C	01576	Each adds one gang	Center Section for Old Work FER102	10	10
FE102D	01586	Voltage Divider	OPTIONAL	25	25

Distributed by