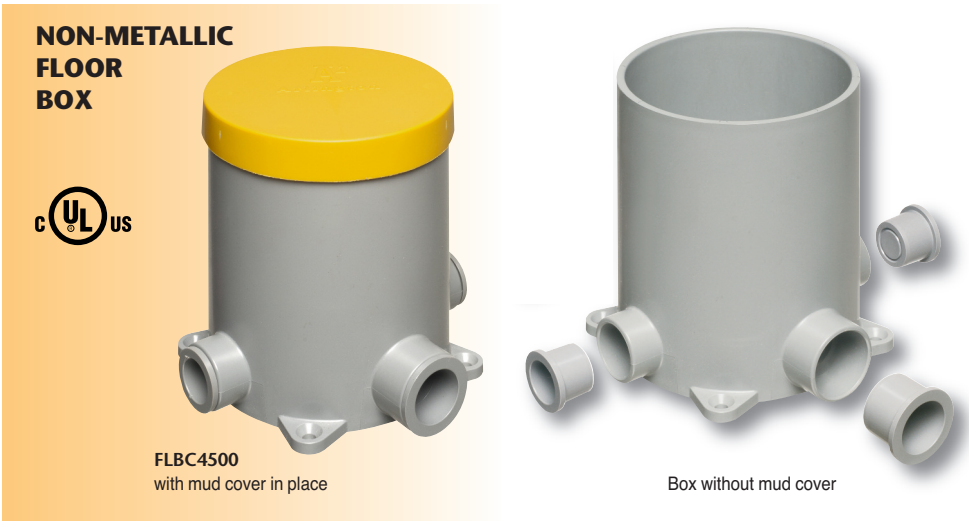


NEW!
more on
reverse

Floor Box and Covers for New Concrete

Non-Metallic Concrete Box • Metal and Plastic Cover Kits



**NON-METALLIC
FLOOR
BOX**



FLBC4500
with mud cover in place

Box without mud cover



COVER KITS FOR BOX

PLASTIC COVERS
in 5 COLORS

NEW!



FLB6230MB
WITH METAL COVER

FLBT6615NL
TRAPDOOR COVER

Brass Trapdoor style
FLBT6615MB
(open and back)

Arlington's cost-effective **FLOOR BOX KITS** offer installers the low cost, *convenient* way to install a receptacle flush with the floor wherever your customer needs one.

Arlington's FLOOR BOX and COVER KITS **FOR NEW CONCRETE** offer flexibility and convenience.

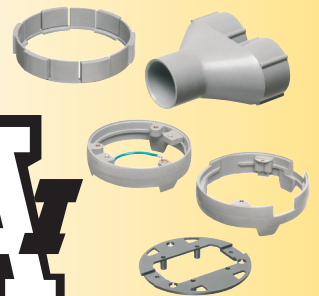
Made of heavy-duty plastic, our 4.5" non-metallic **concrete box** is a common size, that accommodates *our 6" round covers* as well as *most other round covers on the market*.

Our versatile concrete box **covers** are available with flip lids or threaded plugs in brass or nickel-plated brass. **And NOW plastic, in five colors, including paintable white!**

They offer easy installation of receptacles so they'll look great wherever they're installed!

For the *fastest* installation, our trapdoor covers ship *ready to use* with a pre-installed gasket and decorator-style receptacle.

A selection of leveling rings and adapters allows our covers to fit our boxes *and* most other manufacturers' concrete boxes.



Arlington

1 Stauffer Industrial Park
Scranton, PA 18517
800/233.4717
Fax 570/562.0646
www.aifittings.com

Non-Metallic Floor Box and Cover Kits

Put a Receptacle in New Concrete – The Easy, Low Cost Way!



| CATALOG NUMBER | UPC/DCI/NAED MFG. #018997 | DESCRIPTION FINISH/COLOR, COVER STYLE | NOTES | UNIT PKG | STD PKG |
|----------------|---------------------------|--|-------|----------|---------|
| FLBC4500 | 22010 | 4.5" Non-metallic ROUND BOX for Concrete Pours (conduit plugs, mud cover) | | 1 | 5 |

FLB6230MB

Includes brass cover with flip lids, gaskets, receptacle.

Also available with threaded plugs (not shown)



(available nickel-plated)



METAL COVER KITS

| | | | | | |
|-----------|-------|--|--------------------------------|---|----|
| FLB6230MB | 22025 | COVER KIT 6" Round, Brass w two flip lids | * hole pattern fits FLBC4500LR | 1 | 10 |
| FLB6230NL | 22026 | COVER KIT 6" Round, Nickel-plated w two flip lids | * hole pattern fits FLBC4500LR | 1 | 10 |
| FLB6220MB | 22021 | COVER KIT 6" Round, Brass w two threaded plugs | * hole pattern fits FLBC4500LR | 1 | 10 |
| FLB6220NL | 22022 | COVER KIT 6" Round, Nickel-plated w two threaded plugs | * hole pattern fits FLBC4500LR | 1 | 10 |

LEVELING RING

| | | | | | |
|------------|-------|---|--|---|----|
| FLBC4500LR | 22011 | Leveling Ring for Arlington FLBC4500 and round metal covers above (bosses for cover mounting) | | 1 | 10 |
|------------|-------|---|--|---|----|



COVER KIT COMPONENTS

PLASTIC COVER KITS

| | | | | | |
|------------|-------|--|--|---|----|
| FLBC4520LA | 09674 | COVER KIT 6" Round, LIGHT ALMOND – Plastic gasketed cover, mounting plate, leveling ring | | 1 | 10 |
| FLBC4520W | 13838 | COVER KIT 6" Round, WHITE – Plastic gasketed cover, mounting plate, leveling ring | | 1 | 10 |
| FLBC4520GY | 09673 | COVER KIT 6" Round, GRAY – Plastic gasketed cover, mounting plate, leveling ring | | 1 | 10 |
| FLBC4520BR | 09672 | COVER KIT 6" Round, BROWN – Plastic gasketed cover, mounting plate, leveling ring | | 1 | 10 |
| FLBC4520CA | 09669 | COVER KIT 6" Round, CAMEL – Plastic gasketed cover, mounting plate, leveling ring | | 1 | 10 |



FLBT6615MB closed



FLBT6615NL open



FLBT6615MB open on FLBC4500 concrete box

TRAPDOOR STYLE, METAL COVERS, LEVELING RING

| | | | | | |
|------------|-------|--|--|---|----|
| FLBT6615MB | 22030 | Trapdoor Cover Round, Brass. Pre-mounted gasket & decorator-style 15A receptade | | 1 | 10 |
| FLBT6615NL | 22031 | Trapdoor Cover Round, Nickel-plated. Pre-mounted gasket & decorator-style 15A receptacle | | 1 | 10 |
| FLBT6615LR | 22029 | Leveling Ring for Arlington FLBC4500 box w FLBT6615 trapdoor style cover | | 1 | 10 |

FLBT6615LR



ADAPTERS

| | | | | | |
|------------|-------|--|--|---|----|
| FLBC4500AR | 22004 | Oversized Adapter Ring for 5" diameter concrete boxes | | 1 | 10 |
| FLBC4500Y | 22012 | "Y" Adapter - Provides (2) 1" openings for conduit entering 1" hub | | 1 | 10 |



FLBC4500AR Oversized



FLBC4500Y "Y"



Arlington

1 Stauffer Industrial Park
Scranton, PA 18517
800/233.4717
Fax 570/562.0646
www.aifittings.com

© 2015 Arlington Industries, Inc.

Distributed by

Patents pending Floor Box 0415/15M



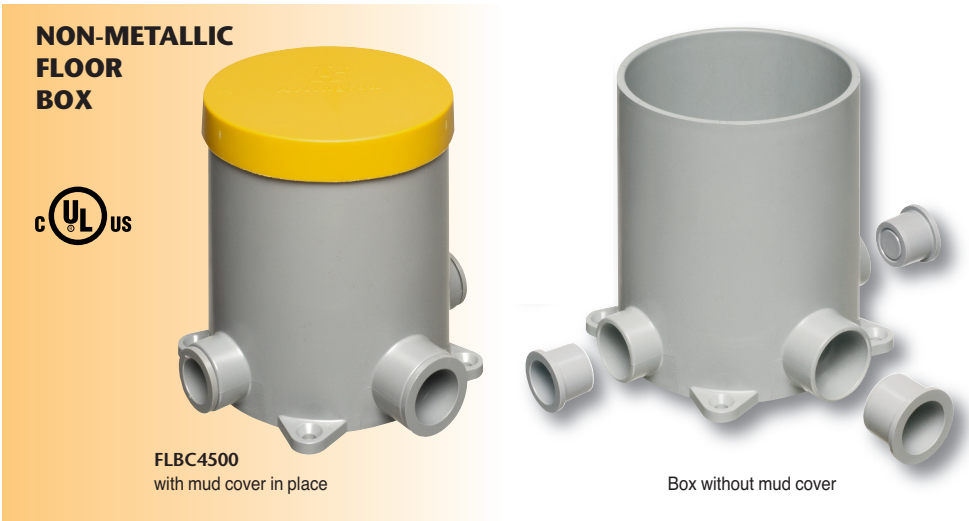
FLBC4520LA closed

PLASTIC COVERS in 5 COLORS

NEW!
more on
reverse

Floor Box and Covers for New Concrete

Non-Metallic Concrete Box • Metal and Plastic Cover Kits



**NON-METALLIC
FLOOR
BOX**



FLBC4500
with mud cover in place

Box without mud cover



COVER KITS FOR BOX

PLASTIC COVERS
in 5 COLORS

NEW!

Arlington's cost-effective **FLOOR BOX KITS** offer installers the low cost, *convenient* way to install a receptacle flush with the floor wherever your customer needs one.

Arlington's FLOOR BOX and COVER KITS **FOR NEW CONCRETE** offer flexibility and convenience.

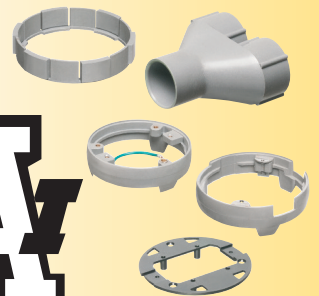
Made of heavy-duty plastic, our 4.5" non-metallic **concrete box** is a common size, that accommodates *our 6" round covers* as well as *most other round covers on the market*.

Our versatile concrete box **covers** are available with flip lids or threaded plugs in brass or nickel-plated brass. **And NOW plastic, in five colors, including paintable white!**

They offer easy installation of receptacles so they'll look great wherever they're installed!

For the *fastest* installation, our trapdoor covers ship *ready to use* with a pre-installed gasket and decorator-style receptacle.

A selection of leveling rings and adapters allows our covers to fit our boxes *and* most other manufacturers' concrete boxes.



FLBT6615NL
TRAPDOOR COVER

FLB6230MB
WITH METAL COVER

Brass Trapdoor style
FLBT6615MB
(open and back)

Arlington

1 Stauffer Industrial Park
Scranton, PA 18517
800/233.4717
Fax 570/562.0646
www.aifittings.com

Non-Metallic Floor Box and Cover Kits

Put a Receptacle in New Concrete – The Easy, Low Cost Way!



| CATALOG NUMBER | UPC/DCI/NAED MFG. #018997 | DESCRIPTION FINISH/COLOR, COVER STYLE | NOTES | UNIT PKG | STD PKG |
|----------------|---------------------------|--|-------|----------|---------|
| FLBC4500 | 22010 | 4.5" Non-metallic ROUND BOX for Concrete Pours (conduit plugs, mud cover) | | 1 | 5 |

FLB6230MB

Includes brass cover with flip lids, gaskets, receptacle.

Also available with threaded plugs (not shown)



(available nickel-plated)



METAL COVER KITS

| | | | | | |
|-----------|-------|--|--------------------------------|---|----|
| FLB6230MB | 22025 | COVER KIT 6" Round, Brass w two flip lids | * hole pattern fits FLBC4500LR | 1 | 10 |
| FLB6230NL | 22026 | COVER KIT 6" Round, Nickel-plated w two flip lids | * hole pattern fits FLBC4500LR | 1 | 10 |
| FLB6220MB | 22021 | COVER KIT 6" Round, Brass w two threaded plugs | * hole pattern fits FLBC4500LR | 1 | 10 |
| FLB6220NL | 22022 | COVER KIT 6" Round, Nickel-plated w two threaded plugs | * hole pattern fits FLBC4500LR | 1 | 10 |

LEVELING RING

| | | | | | |
|------------|-------|---|--|---|----|
| FLBC4500LR | 22011 | Leveling Ring for Arlington FLBC4500 and round metal covers above (bosses for cover mounting) | | 1 | 10 |
|------------|-------|---|--|---|----|



COVER KIT COMPONENTS

PLASTIC COVER KITS

| | | | | | |
|------------|-------|--|--|---|----|
| FLB64520LA | 09674 | COVER KIT 6" Round, LIGHT ALMOND – Plastic gasketed cover, mounting plate, leveling ring | | 1 | 10 |
| FLB64520W | 13838 | COVER KIT 6" Round, WHITE – Plastic gasketed cover, mounting plate, leveling ring | | 1 | 10 |
| FLB64520GY | 09673 | COVER KIT 6" Round, GRAY – Plastic gasketed cover, mounting plate, leveling ring | | 1 | 10 |
| FLB64520BR | 09672 | COVER KIT 6" Round, BROWN – Plastic gasketed cover, mounting plate, leveling ring | | 1 | 10 |
| FLB64520CA | 09669 | COVER KIT 6" Round, CAMEL – Plastic gasketed cover, mounting plate, leveling ring | | 1 | 10 |



FLBT6615MB closed



FLBT6615NL open



FLBT6615MB open on FLBC4500 concrete box

TRAPDOOR STYLE, METAL COVERS, LEVELING RING

| | | | | | |
|------------|-------|--|--|---|----|
| FLBT6615MB | 22030 | Trapdoor Cover Round, Brass. Pre-mounted gasket & decorator-style 15A receptade | | 1 | 10 |
| FLBT6615NL | 22031 | Trapdoor Cover Round, Nickel-plated. Pre-mounted gasket & decorator-style 15A receptacle | | 1 | 10 |
| FLBT6615LR | 22029 | Leveling Ring for Arlington FLBC4500 box w FLBT6615 trapdoor style cover | | 1 | 10 |

FLBT6615LR



ADAPTERS

| | | | | | |
|------------|-------|--|--|---|----|
| FLBC4500AR | 22004 | Oversized Adapter Ring for 5" diameter concrete boxes | | 1 | 10 |
| FLBC4500Y | 22012 | "Y" Adapter - Provides (2) 1" openings for conduit entering 1" hub | | 1 | 10 |



FLBC4500AR Oversized



FLBC4500Y "Y"



Arlington

1 Stauffer Industrial Park
Scranton, PA 18517

800/233.4717

Fax 570/562.0646

www.aifittings.com

© 2015 Arlington Industries, Inc.

Distributed by

Patents pending Floor Box 0415/15M

