

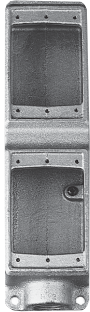
# Condulet® Multi-Gang Device Boxes - Cast Iron or Aluminum

Accessories  
see pages 37-45

2F

With and Without Mounting Lugs for  
Threaded Rigid and IMC Conduit

## FS†



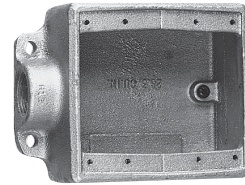
Two Gang Tandem Size	Cat. #
1/2	FS17
3/4	FS27

## FSC†



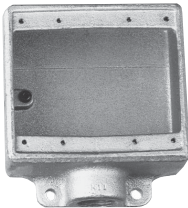
Two Gang Tandem Size	Cat. #
1/2	FSC17
3/4	FSC27

## FSE



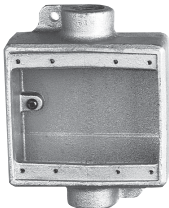
Two Gang Size	Cat. #
3/4	FSE22

## FS & FD



Two Gang Size	Cat. #	Cat. #
1/2	FS12*	FD12
3/4	FS22*	FD22*
1	FS32	FD32

## FSC & FDC



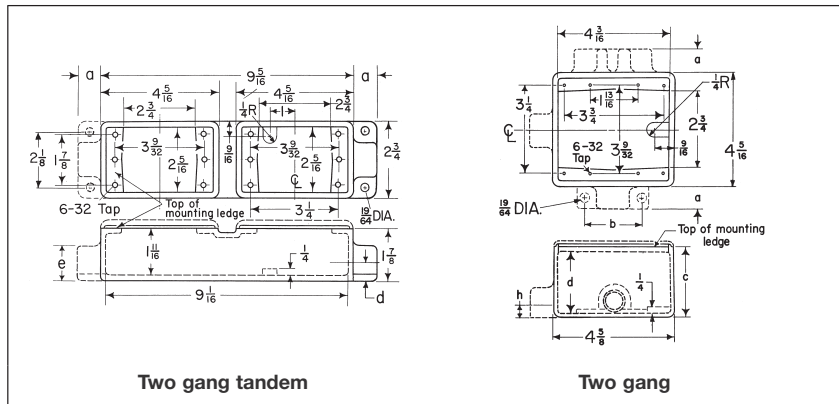
Two Gang Size	Cat. #	Cat. #
1/2	FSC12	FDC12
3/4	FSC222	FDC222*
1	FSC32	FDC32

†Use single gang covers only.

\*Available in copper-free aluminum; add suffix "SA".

## Dimensions

In Inches:



### Two gang tandem

Series	Hub Size	a	b	e
FS	1/2	7/8	5/8	1 1/4
	3/4	7/8	3/4	1 1/2

### Two gang

Series	Hub Size	a	b	c	d	h
FS	1/2	7/8	2 1/4	1 7/8	1 11/16	5/8
	3/4	7/8	2 1/4	1 7/8	1 11/16	3/4
	1	1	2 1/2	1 7/8	1 11/16	7/8
FD	1/2	7/8	2 1/4	2 11/16	2 1/2	5/8
	3/4	7/8	2 1/4	2 11/16	2 1/2	3/4
	1	1	2 1/2	2 11/16	2 1/2	7/8

# 2F Condulet® Multi-Gang Device Boxes - Cast Iron or Aluminum

Accessories  
see pages 37-45

With and Without Mounting Lugs for  
Threaded Rigid and IMC Conduit

2F

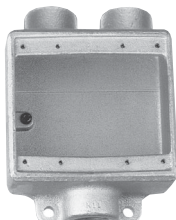
## FSS & FDS



### Two Gang

Size	Cat. #	Cat. #
3/4	FSS222	FDS222

## FSD

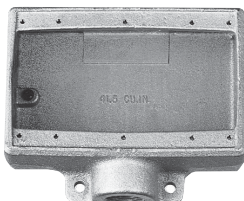


### Two Gang

Size	Cat. #
3/4	FSD212*

\*Hubs on 2 hub side are 1/2"

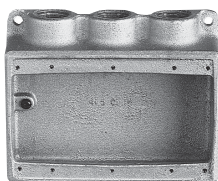
## FS & FD



### Three Gang

Size	Cat. #	Cat. #
3/4	FS23	FD23
1	FS33	

## FSS

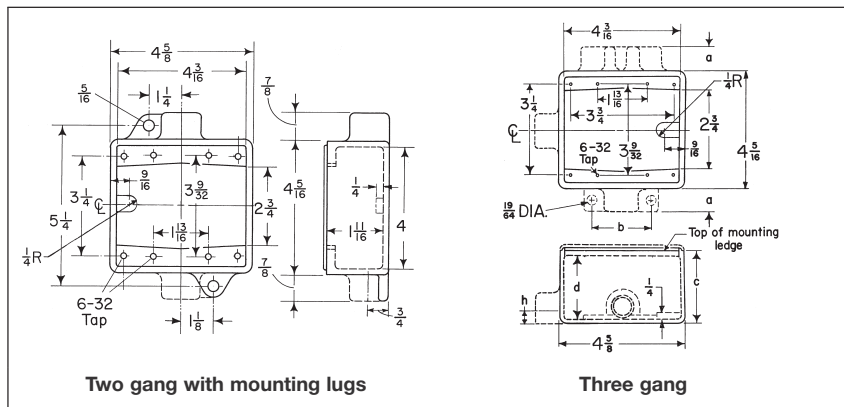


### Three Gang

Size	Cat. #
3/4	FSS23

## Dimensions

In Inches:



### Three gang

Series	Hub Size	a	c	d
FS	3/4	7/8	1 1/8	1 11/16
	1	1	1 1/8	1 11/16
FD	3/4	7/8	2 11/16	2 1/2

# Condulet® Multi-Gang Device Boxes - Cast Iron or Aluminum

Accessories  
see pages 37-45

2F

With and Without Mounting Lugs for  
Threaded Rigid and IMC Conduit

## FS†



### Two Gang Tandem

Size	Cat. #
1/2	FS17
3/4	FS27

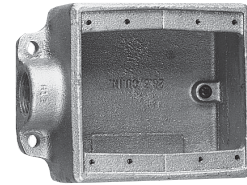
## FSC†



### Two Gang Tandem

Size	Cat. #
1/2	FSC17
3/4	FSC27

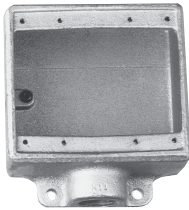
## FSE



### Two Gang

Size	Cat. #
3/4	FSE22

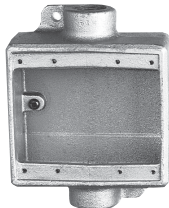
## FS & FD



### Two Gang

Size	Cat. #	Cat. #
1/2	FS12*	FD12
3/4	FS22*	FD22*
1	FS32	FD32

## FSC & FDC



### Two Gang

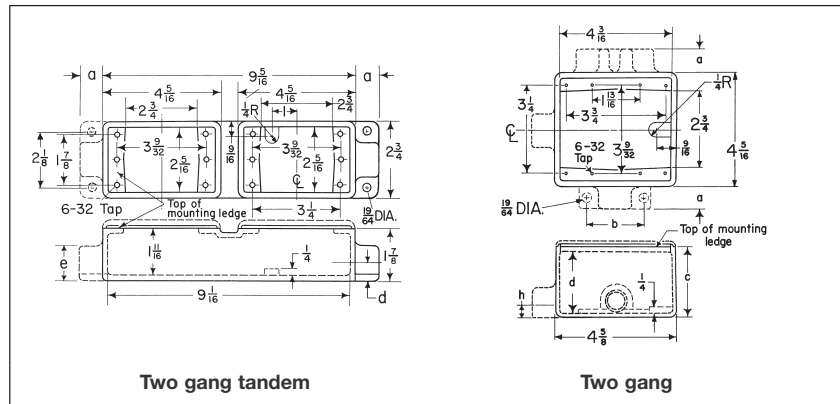
Size	Cat. #	Cat. #
1/2	FSC12	FDC12
3/4	FSC22	FDC22*
1	FSC32	FDC32

†Use single gang covers only.

\*Available in copper-free aluminum; add suffix "SA".

## Dimensions

In Inches:



### Two gang tandem

Series	Hub Size	a	b	e
FS	1/2	7/8	5/8	1 1/4
	3/4	7/8	3/4	1 1/2

### Two gang

Series	Hub Size	a	b	c	d	h
FS	1/2	7/8	2 1/4	1 7/8	1 11/16	5/8
	3/4	7/8	2 1/4	1 7/8	1 11/16	3/4
	1	1	2 1/2	1 7/8	1 11/16	7/8
FD	1/2	7/8	2 1/4	2 11/16	2 1/2	5/8
	3/4	7/8	2 1/4	2 11/16	2 1/2	3/4
	1	1	2 1/2	2 11/16	2 1/2	7/8

2F

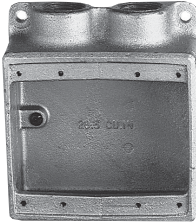
# Condulet® Multi-Gang Device Boxes - Cast Iron or Aluminum

Accessories  
see pages 37-45

With and Without Mounting Lugs for  
Threaded Rigid and IMC Conduit

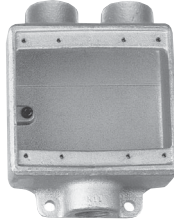
2F

## FSS & FDS



Two Gang		
Size	Cat. #	Cat. #
3/4	FSS222	FDS222

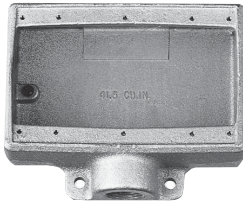
## FSD



Two Gang	
Size	Cat. #
3/4	FSD212*

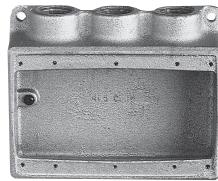
\*Hubs on 2 hub side are 1/2"

## FS & FD



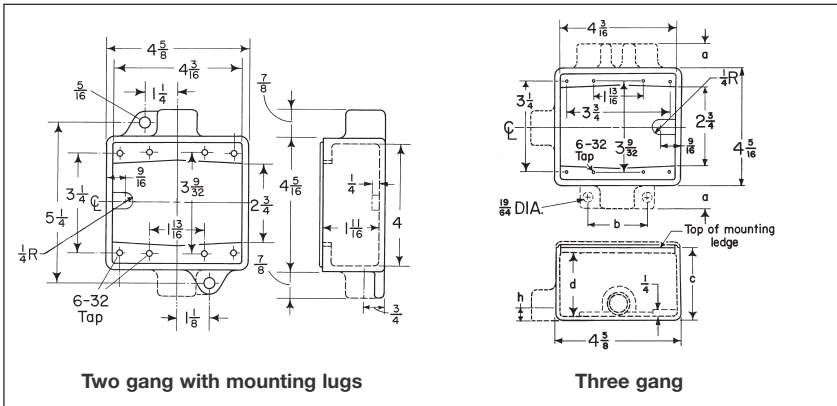
Three Gang		
Size	Cat. #	Cat. #
3/4	FS23	FD23
1	FS33	

## FSS



Three Gang	
Size	Cat. #
3/4	FSS23

## Dimensions In Inches:



### Three gang

Series	Hub Size	a	c	d
FS	3/4	7/8	1 1/8	1 11/16
	1	1	1 7/8	1 11/16
FD	3/4	7/8	2 11/16	2 1/2