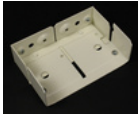




# ELLIOTT ELECTRIC SUPPLY

We Deliver...Lower Cost, Quality Products, & Personal Service

2310 N. Stallings Dr.  
75964-0000, TX Nacogdoches  
Phone: 936-569-7941  
Fax: 936-560-4685



## **G4017 STL Int. Elbow 4000 Gy** *Wiremold/Legrand*

|                  |  |
|------------------|--|
| Catalog Number   | G4017  |
| Manufacturer     | Wiremold/Legrand   |
| Description      | <P>90 Degree Internal Corners. Fiber Bushing Included.</P> |
| Weight per unit  | 0.6600 (lbs/each)  |
| Product Category | Metallic Raceway & Accessories                             |

### **Features**

|         |         |
|---------|---------|
| Voltage | 600.0 V |
|---------|---------|

### **Material, Color, and Finish**

|       |      |
|-------|------|
| Color | Gray |
|-------|------|

### **Descriptions**

|                        |   |
|------------------------|---|
| Description            | STL INT. ELBOW 4000 GY  |
| extra long description | WM G4017 STL INT. ELBOW 4000 GRAY   |
| Long Description       | <p>90 degree internal corners. Fiber bushing included.</p>  |
| Product Type           | STL Int. Elbow 4000 Gray  |
| Special Features       | Large cross section area, provides ample space for largewiring requirements.Complete line of fittings, provides complete wiring solutionand allows for interconnection between raceway systems. Gray baked enamel and Ivory ScuffCoat finish makes a scratch resistant surface. |

### **Manufacturer Information**

|                           |                |
|---------------------------|----------------|
| Brand                     | WIREMOLD       |
| GTIN                      | 00786776088861 |
| Manufacturers Part Number | G4017          |
| UPC                       | 786776088861   |

### **Taxonomies, Classifications, and Categories**

|                      |   |
|----------------------|---|
| Category Description | Panduit & Wiremold Metallic & Non-Metallic Raceways |
| Type                 | Raceway   |

### **Packaging**

|                 |      |
|-----------------|------|
| Carton          | 1    |
| Weight Per each | 0.66 |

### **Uses, Certifications, and Standards**

|          |  |
|----------|--|
| standard | ROHS, CULUS, cULus Listed Raceway: File E4376 Guide RJBT.<br>Fittings: File E41751 Guide RJPR. Base & Blank Cover: Meets<br>Article 386 of NEC. Meets Section 12-600 of CEC. |
|----------|--|