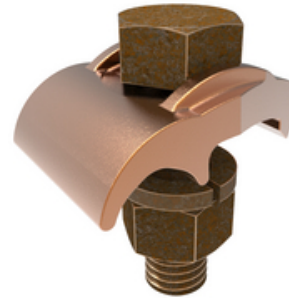




## GBM26, Mechanical Grounding Connector, Cable to Bar

By Burndy  
Catalog # [GBM26](#)

Mechanical Grounding Connector, Cable to 1/4" Thick Bar, 4 AWG (Sol)-2/0 AWG (Str), 3/8" Stud.



### General

|                                 |   |
|---------------------------------|---|
| Application                     | For Copper Cable To Bar,<br>Direct Burial Cable |
| Catalog Number                  | GBM26   |
| EU RoHS Indicator               | Yes   |
| Installation Torque             | 240 lb-in                                       |
| Recommended in-lb               |   |
| Material                        | Copper Alloy                                    |
| Material Type - Screw           | DURIUM™ Silicon Bronze                          |
| Physical Attribute - Screw Type | Hexagonal Bolt                                  |
| Plated                          | N   |
| Plating Type                    | Unplated  |
| Sub Brand                       | MECHANICAL CONNECTOR                            |
| Type                            | GBM   |
| UPC                             | 781810231449                                    |
| UPC 12 Digit                    | 7818102314499                                   |

### Dimensions

|                                 |          |
|---------------------------------|----------|
| Dimension - Height inch         | 1.49 in  |
| Dimension - L Length Overall mm | 24 mm    |
| Dimension - Length Overall inch | 0.94 in  |
| Dimension - Width fraction      | 1-1/3 in |
| Dimension - Width inch          | 1.34 in  |
| Dimension - Width mm            | 34 mm    |

### Conductor Related

|                                     |   |
|-------------------------------------|---|
| Conductor - Copper Solid Size       | 4 AWG;3 AWG;2 AWG;1 AWG;1/0 AWG;2/0 AWG |
| Conductor - Copper Solid Size Range | #4 AWG-2/0 AWG                          |
| Conductor - Copper Str Size         | 4 AWG;3 AWG;2 AWG;1 AWG;1/0 ;2/0 AWG    |
| Conductor - Copper Str Size Range   | 4 AWG - 2/0 AWG                         |

### Certifications And Compliance

|   |       |
|---|-------|
| Certification - CSA Approved            | No    |
| Certification - ETL                     | No    |
| Certification - UL Listed Direct Burial | Yes   |
| Certification - UL Recognized           | No    |
| Certification - cULus                   | No    |
| Industry Standard(s)                    | UL467 |
| Standards - Industry Standards Met      | UL467 |
| Standards - RoHS Compliance Status      | EX    |
| UL Listed                               | Yes   |

### Logistics

|                       |   |
|-----------------------|---|
| Minimum Pack Quantity | 1 |
|-----------------------|---|

### Product Assets

[3D Models - GBM26\\_MODEL-STEP](#)  
[3D Models - GBM26\\_MODEL-PDF](#)  
[3D Models - GBM26\\_MODEL-IGES](#)  
[Catalogs - BURNDY Master Catalog - Full Line BURNDY Catalog](#)  
[Catalogs - BURNDY Master Catalog - Section E2 - Mechanical Grounding](#)  
[Customer Notices - Prop 65 Notice](#)  
[Interactive Catalog - BURNDY Full-Line Digital Catalog](#)  
[Product Cross Section Image\(s\) - BUR\\_GBM\\_Lineart](#)  
[Sales Drawings - sc091658-01](#)



A Hubbell brand

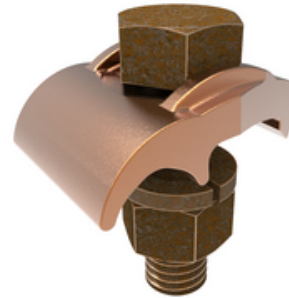
©2024 Hubbell Incorporated. All rights reserved  
BRDY-GBM26-SPEC-EN | REV 6/2024



## GBM26, Mechanical Grounding Connector, Cable to Bar

By Burndy  
Catalog # [GBM26](#)

Mechanical Grounding Connector, Cable to 1/4" Thick Bar, 4 AWG (Sol)-2/0 AWG (Str), 3/8" Stud.



### General

|                                 |   |
|---------------------------------|---|
| Application                     | For Copper Cable To Bar,<br>Direct Burial Cable |
| Catalog Number                  | GBM26   |
| EU RoHS Indicator               | Yes   |
| Installation Torque             | 240 lb-in                                       |
| Recommended in-lb               |   |
| Material                        | Copper Alloy                                    |
| Material Type - Screw           | DURIUM™ Silicon Bronze                          |
| Physical Attribute - Screw Type | Hexagonal Bolt                                  |
| Plated                          | N   |
| Plating Type                    | Unplated  |
| Sub Brand                       | MECHANICAL CONNECTOR                            |
| Type                            | GBM   |
| UPC                             | 781810231449                                    |
| UPC 12 Digit                    | 7818102314499                                   |

### Dimensions

|                                 |          |
|---------------------------------|----------|
| Dimension - Height inch         | 1.49 in  |
| Dimension - L Length Overall mm | 24 mm    |
| Dimension - Length Overall inch | 0.94 in  |
| Dimension - Width fraction      | 1-1/3 in |
| Dimension - Width inch          | 1.34 in  |
| Dimension - Width mm            | 34 mm    |

### Conductor Related

|                                     |   |
|-------------------------------------|---|
| Conductor - Copper Solid Size       | 4 AWG;3 AWG;2 AWG;1 AWG;1/0 AWG;2/0 AWG |
| Conductor - Copper Solid Size Range | #4 AWG-2/0 AWG                          |
| Conductor - Copper Str Size         | 4 AWG;3 AWG;2 AWG;1 AWG;1/0 ;2/0 AWG    |
| Conductor - Copper Str Size Range   | 4 AWG - 2/0 AWG                         |

### Certifications And Compliance

|   |       |
|---|-------|
| Certification - CSA Approved            | No    |
| Certification - ETL                     | No    |
| Certification - UL Listed Direct Burial | Yes   |
| Certification - UL Recognized           | No    |
| Certification - cULus                   | No    |
| Industry Standard(s)                    | UL467 |
| Standards - Industry Standards Met      | UL467 |
| Standards - RoHS Compliance Status      | EX    |
| UL Listed                               | Yes   |

### Logistics

|                       |   |
|-----------------------|---|
| Minimum Pack Quantity | 1 |
|-----------------------|---|

### Product Assets

[3D Models - GBM26\\_MODEL-STEP](#)  
[3D Models - GBM26\\_MODEL-PDF](#)  
[3D Models - GBM26\\_MODEL-IGES](#)  
[Catalogs - BURNDY Master Catalog - Full Line BURNDY Catalog](#)  
[Catalogs - BURNDY Master Catalog - Section E2 - Mechanical Grounding](#)  
[Customer Notices - Prop 65 Notice](#)  
[Interactive Catalog - BURNDY Full-Line Digital Catalog](#)  
[Product Cross Section Image\(s\) - BUR\\_GBM\\_Lineart](#)  
[Sales Drawings - sc091658-01](#)



A Hubbell brand

©2024 Hubbell Incorporated. All rights reserved  
BRDY-GBM26-SPEC-EN | REV 6/2024