

GRSS Conduit Outlet Boxes with Multiple Hubs

Explosionproof, Dust-Ignitionproof, Raintight

UNILETS® for use with Threaded Metal Conduit. Furnished with Internal Ground Screw and O-Ring gasket.

Class I, Division 1 and 2, Groups B♦, C, D
 Class II, Division 1 and 2, Groups E, F, G
 Class III

Applications

- Complies with a wide range of classified area requirements.
- Corrosion-resistant: ideal indoors or out.
- For pulling of wires.
- Connect conduit lengths and change direction of conduit runs.
- Provide access for maintenance.

Features

- Accurately tapped, tapered hub threads for tight, rigid joints and ground continuity.
- Furnished with covers.
- General purpose wiring.
- Multiple hubs permit flexibility.
- Copperfree aluminum body and cover provide superior corrosion resistance.
- Internal ground screw standard.
- Cover O-ring included.

Standard Materials



- Bodies and covers: copperfree (4/10 of 1% max.) aluminum

Standard Finishes

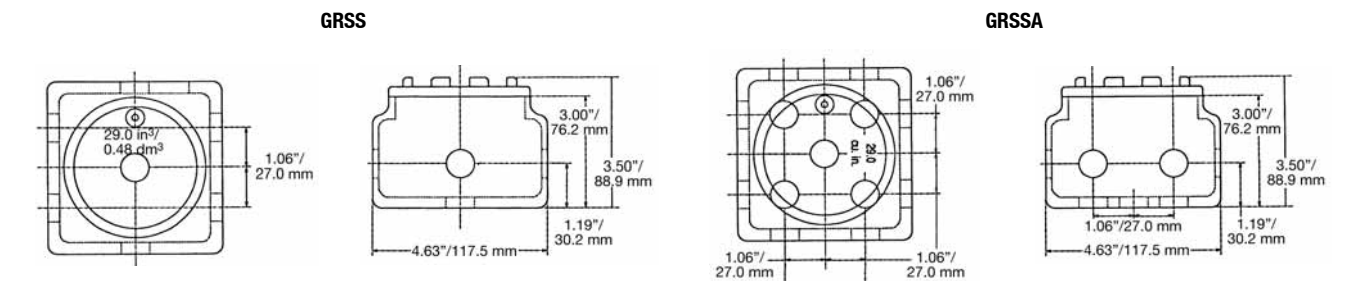
- Epoxy powder coat

Certifications and Compliances

- UL Standard: UL 886 (UL 1203)
- UL Listed: E10444
- CSA Standard: C22.2 No. 25, C22.2 No. 30
- CSA Certified: 025875

| Box Type | Conduit Size (Inches) | Cover Opening Inches/Millimeters | Hubs | Plugs | Capacity in ³ /dm ³ | Catalog Number ♦ | |
|---|--|----------------------------------|-----------|-------|---|------------------|----------------|
| GRSS Outlet Box with Cover | | | | | | | |
|  | <i>Internally threaded aluminum bodies with externally threaded aluminum form 1 covers. Has 7 hubs; 2 on each of the sides, 1 on the top, 1 on the bottom and 1 on the center in the back. Furnished with 4 close-up plugs and O-Ring.</i> | | | | | | |
| | GRSS | 1/2 | 3.38/85.9 | 7 | 4 | 29.0/0.48 | GRSS50 |
| | | 3/4 | 3.38/85.9 | 7 | 4 | 29.0/0.48 | GRSS75 |
| | 1 | 3.38/85.9 | 7 | 4 | 29.0/0.48 | GRSS100 | |
| GRSSA Outlet Box with Cover | | | | | | | |
|  | <i>Internally threaded aluminum bodies with externally threaded aluminum form 1 covers. Has 13 hubs; 2 on each side, 2 each on top and bottom and 5 in the back. Furnished with 5 close-up plugs and O-Ring.</i> | | | | | | |
| | GRSSA | 1/2 | 3.38/85.9 | 13 | 5 | 29.0/0.48 | GRSSA50 |
| | | 3/4 | 3.38/85.9 | 13 | 5 | 29.0/0.48 | GRSSA75 |

Dimensions



♦ In Class I, Division 1, Group B atmospheres, all conduit runs must have a sealing fitting (not supplied) field-installed adjacent to the enclosure.

GRSS Conduit Outlet Boxes with Multiple Hubs

Explosionproof, Dust-Ignitionproof, Raintight

UNILETS® for use with Threaded Metal Conduit. Furnished with Internal Ground Screw and O-Ring gasket.

Class I, Division 1 and 2, Groups B♦, C, D
 Class II, Division 1 and 2, Groups E, F, G
 Class III

Applications

- Complies with a wide range of classified area requirements.
- Corrosion-resistant: ideal indoors or out.
- For pulling of wires.
- Connect conduit lengths and change direction of conduit runs.
- Provide access for maintenance.

Features

- Accurately tapped, tapered hub threads for tight, rigid joints and ground continuity.
- Furnished with covers.
- General purpose wiring.
- Multiple hubs permit flexibility.
- Copperfree aluminum body and cover provide superior corrosion resistance.
- Internal ground screw standard.
- Cover O-ring included.

Standard Materials



- Bodies and covers: copperfree (4/10 of 1% max.) aluminum

Standard Finishes

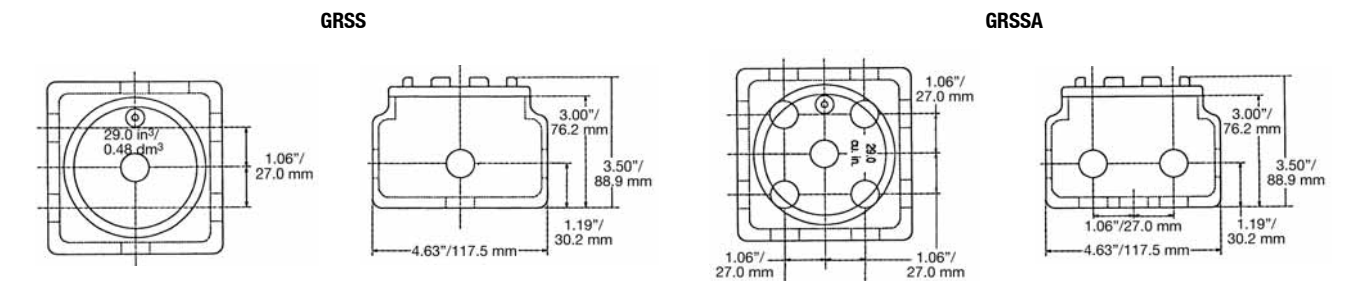
- Epoxy powder coat

Certifications and Compliances

- UL Standard: UL 886 (UL 1203)
- UL Listed: E10444
- CSA Standard: C22.2 No. 25, C22.2 No. 30
- CSA Certified: 025875

| Box Type | Conduit Size (Inches) | Cover Opening Inches/Millimeters | Hubs | Plugs | Capacity in ³ /dm ³ | Catalog Number ♦ | |
|---|--|----------------------------------|-----------|-------|---|------------------|----------------|
| GRSS Outlet Box with Cover | | | | | | | |
|  | <i>Internally threaded aluminum bodies with externally threaded aluminum form 1 covers. Has 7 hubs; 2 on each of the sides, 1 on the top, 1 on the bottom and 1 on the center in the back. Furnished with 4 close-up plugs and O-Ring.</i> | | | | | | |
| | GRSS | 1/2 | 3.38/85.9 | 7 | 4 | 29.0/0.48 | GRSS50 |
| | | 3/4 | 3.38/85.9 | 7 | 4 | 29.0/0.48 | GRSS75 |
| | 1 | 3.38/85.9 | 7 | 4 | 29.0/0.48 | GRSS100 | |
| GRSSA Outlet Box with Cover | | | | | | | |
|  | <i>Internally threaded aluminum bodies with externally threaded aluminum form 1 covers. Has 13 hubs; 2 on each side, 2 each on top and bottom and 5 in the back. Furnished with 5 close-up plugs and O-Ring.</i> | | | | | | |
| | GRSSA | 1/2 | 3.38/85.9 | 13 | 5 | 29.0/0.48 | GRSSA50 |
| | | 3/4 | 3.38/85.9 | 13 | 5 | 29.0/0.48 | GRSSA75 |

Dimensions



♦ In Class I, Division 1, Group B atmospheres, all conduit runs must have a sealing fitting (not supplied) field-installed adjacent to the enclosure.