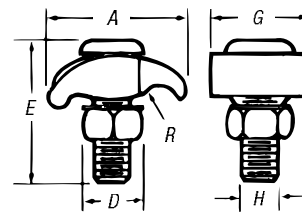


Structure Grounding

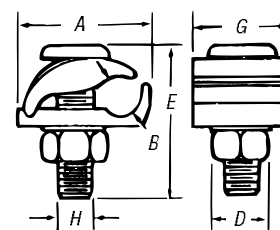
Bolt features square shank to prevent turning and enable clamp to be tightened with a single wrench.

Type GTC — Tower Ground Clamps

- Castings of high-strength, corrosion-resistant copper alloy
- GTC23 and GTC24 are two-piece clamps for connecting ground lead cable to flat metal surface — ideal for grounding substations on tower footings
- GTC13 and GTC14 are economical one-piece clamps, which perform the same function as two-piece clamps, except under-pad support is omitted and conductor connects directly to tower
- Add suffix L to catalog number for 1/2" channel thickness



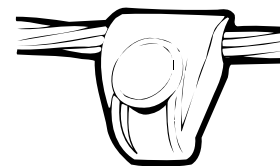
Type GTC 13 and 14



Type GTC 23 and 24

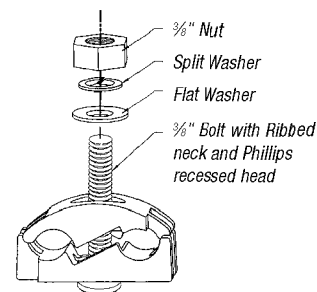


CAT. NO.	CONDUCTOR RANGE				CHANNEL THICKNESS	DIMENSION (IN.)						
	MAX.	MIN.	MAX. (MM ²)	MIN. (MM ²)		A	B	D	E	G	H	R
GTC13	2/0 Str.	#4 Sol.	67.4	21.1	1/4	1 1/32	—	3/16	1 21/32	1 1/32	3/8	1/32
GTC14	250 kcmil	2/0 Str.	126.6	67.4	1/4	1 15/16	—	3/4	1 15/16	1 13/32	1/2	3/16
GTC23	2/0 Str.	#4 Sol.	67.4	21.1	1/4	1 41/64	7/16	3/16	1 21/32	1 1/32	3/8	—
GTC24	250 kcmil	2/0 Str.	126.6	21.1	1/4	1 61/64	3/8	3/4	1 15/16	1 1/2	1/2	—



For use with aluminum or copper conductors. CTG250 Wide-Range Tower Ground Clamp

- May be used in aluminum or galvanized-steel cable tray
- Ribbed neck on the bolt prevents rotation during tightening if .440" dia. hole is used



CAT. NO.	WIDE RANGE (2 SIDES)	HEIGHT	WIDTH	DEPTH	NUT (FLATS)
CTG250	#2 Sol. (.258 Dia.) 250 kcmil (.575 Dia.)	1.95	2.00	1.13	.560

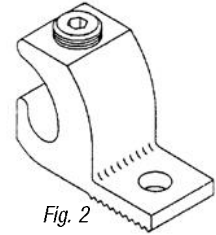
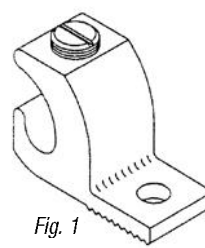
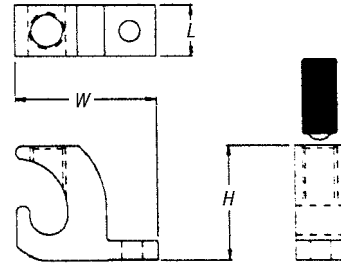
Tin-plate body
Galvanized hardware

Structure Grounding

Dual-rated for both copper and aluminum conductor.

Aluminum Lay-in Lug Connector

- Manufactured from 6061-T6 aluminum alloy for maximum strength and conductivity
- Open-faced design enables installer to quickly lay-in grounding conductor as jumper to multiple conduits with no break in ground conductor



CAT. NO.	FIG. NO.	COND. RANGE AWG		STUD SIZE		DIMENSIONS					
		IN.	(MM ²)	IN.	(MM)	H		W		L	
						IN.	(MM)	IN.	(MM)	IN.	(MM)
LL414	1	4-14	16-1.5	.22	5.59	.78	19.81	.38	9.65	1.07	27.18
LL1014	1	1/0-14	50-1.5	.27	6.86	1.17	29.72	.60	15.24	1.50	38.10
LL306	2	3/0-6	70-16	.33	8.38	1.56	39.62	.80	20.32	2.00	50.80
LL2506	2	250-6	120-16	.33	8.38	1.79	45.47	.80	20.32	2.20	55.88

90° C Rating (486B Listed)

UL® Listed for direct burial. Copper Lay-In Lug Connector

- Ideal for swimming pool grounding applications
- Carries “DB” marking for direct burial
- Open-faced design enables installer to quickly lay-in grounding conductor as jumper to multiple conduits with no break in ground conductor



CAT. NO.	COND. RANGE AWG		STUD SIZE		DIMENSIONS					
	IN.	(MM ²)	IN.	(MM)	H		W		L	
					IN.	(MM)	IN.	(MM)	IN.	(MM)
CULL414	4-14	16-1.5	.22	5.59	.78	19.81	.38	9.65	1.07	27.18
CULL414-TP*	4-14	16-1.5	.22	5.59	.78	19.81	.38	9.65	1.07	27.18

90° C Rating (486B Listed)

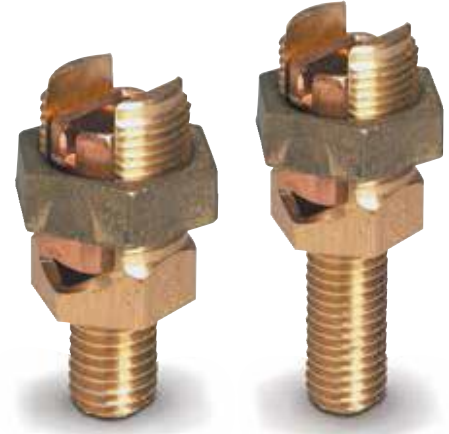
* Tin plated

Structure Grounding

Designed for grounding one or two cables to steel structure or transformer.

Service Post Connectors

- For copper-to-copper connections
- Can also be used to tap one or two cables from bus bar
- Bolts machined from high-conductivity bronze alloy
- Nuts cold-formed from high-strength, corrosion-resistant copper alloy
- Pressure bars copper through 4/0 and copper alloy for 350 kcmil and above
- Bolts and nuts of traditional Blackburn hex design for easy installation
- Available in sizes to accommodate AWG copper conductor ranges of #12–500 kcmil stranded and #12–#2 solid
- Both single- and double-conductor and short- and long-stud versions available
- UL® 486A and UL® 467 Listed



Type SP-S — Service Post Connectors, Short Stud



CAT. NO. CONDUCTOR		CONDUCTORS STRANDED		AWG MM ² SOLID		DIAMETER RANGE (IN.)	STUD SIZE
DOUBLE	SINGLE	MAX.	MIN.	MAX.	MIN.		
SP0DS	SPOSS	8	12	8	12	.146–.081	¼–20 x ½
		6mm ²	4mm ²	10mm ²	4mm ²	—	
SP1DS	SP1SS	7	10	6	10	.164–.102	¼–20 x ½
		10mm ²	6mm ²	10mm ²	6mm ²	—	
SP2DS	SP2SS	5	10	4	10	.206–.102	⅝–18 x ⅝
		16mm ²	6mm ²	—	—	—	
SP3DS	SP3SS	3	10	2	10	.26–.102	⅝–16 x ⅝
		25mm ²	6mm ²	—	—	—	
SP4DS	SP4SS	1	8	2	8	.332–.129	⅝–16 x ⅝
		35mm ²	10mm ²	—	—	—	
SP5DS	SP5SS	1/0	2	1/0	2	.373–.258	½–13 x ¾
		50mm ²	35mm ²	—	—	—	
SP6DS	SP6SS	2/0	2	2/0	2	.419–.258	½–13 x ¾
		50mm ²	35mm ²	—	—	—	
SP8DS	SP8SS	4/0	2	4/0	1	.528–.289	⅝–11 x 1
		95mm ²	35mm ²	—	—	—	
SP9DS	SP9SS	350	1/0	—	—	.681–.373	⅝–11 x 1
		150mm ²	50mm ²	—	—	—	
SP10DS	SP10SS	500	3/0	—	—	.814–.47	¾–10 x 1¼
		240mm ²	95mm ²	—	—	—	

Type SP-L — Service Post Connectors, Long Stud



CAT. NO. CONDUCTOR		CONDUCTORS STRANDED		AWG MM ² SOLID		DIAMETER RANGE (IN.)	STUD SIZE
DOUBLE	SINGLE	MAX.	MIN.	MAX.	MIN.		
SP0DL	SPOSL	8	12	8	12	.146–.081	¼–20 x 1
		6mm ²	4mm ²	10mm ²	4mm ²	—	
SP1DL	SP1SL	7	10	6	10	.164–.102	¼–20 x 1
		10mm ²	6mm ²	10mm ²	6mm ²	—	
SP2DL	SP2SL	5	10	4	10	.206–.102	⅝–18 x 1
		16mm ²	6mm ²	—	—	—	
SP3DL	SP3SL	3	10	2	10	.26–.102	⅝–16 x 1½
		25mm ²	6mm ²	—	—	—	
SP4DL	SP4SL	1	8	2	8	.332–.129	⅝–16 x 1½
		35mm ²	10mm ²	—	—	—	
SP5DL	SP5SL	1/0	2	1/0	2	.373–.258	½–13 x 1¼
		50mm ²	35mm ²	—	—	—	
SP6DL	SP6SL	2/0	2	2/0	2	.419–.258	½–13 x 1¼
		50mm ²	35mm ²	—	—	—	
SP8DL	SP8SL	4/0	2	4/0	1	.528–.289	⅝–11 x 1½
		95mm ²	35mm ²	—	—	—	
SP9DL	SP9SL	350	1/0	—	—	.681–.373	⅝–11 x 1½
		150mm ²	50mm ²	—	—	—	
SP10DL	SP10SL	500	3/0	—	—	.814–.47	¾–10 x 1¼
		240mm ²	95mm ²	—	—	—	