

Rigid Metal Conduit, IMC or EMT Hang-On® Hangers

Applications

- To secure rigid metal conduit, IMC or EMT to threaded rod, supports or direct to mounting surface.

Features

- Available with bolt or swing bolt.

Material/Finish

- Steel/zinc plated

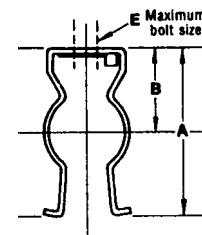
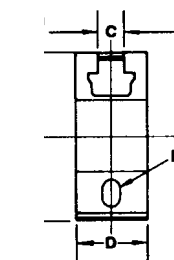
Certifications and Compliances

- UL Standard: 2239
- UL Listed: E336499
- CSA Standard: C22.2 No. 18.4
- CSA Certified: 065178

Catalog Number	Trade Size (Inches)	Dimensions in Inches/Millimeters						Weight Lbs./Kgs. Per 100
		A	B	C	D	E	F	

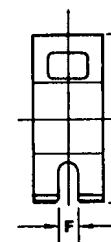
Hang-On® Conduit Hangers with Bolts – Steel/Zinc Plated

H50WB	1/2	1.88/ 47.8	0.88/ 22.4	0.28/ 7.1	0.75/ 19.1	0.25/ 6.4	0.28/ 7.1	6.00/ 2.72
H75WB	3/4	2.00/ 50.8	0.91/ 23.1	0.28/ 7.1	0.88/ 22.4	0.25/ 6.4	0.28/ 7.1	7.00/ 3.18
H100WB	1	2.41/ 61.2	1.16/ 29.5	0.28/ 7.1	0.88/ 22.4	0.25/ 6.4	0.28/ 7.1	9.00/ 4.08
H125WB	1-1/4	2.81/ 71.4	1.38/ 35.1	0.28/ 7.1	0.88/ 22.4	0.25/ 6.4	0.28/ 7.1	10.00/ 4.54
H150WB	1-1/2	3.22/ 81.8	1.63/ 41.4	0.69/ 17.5	1.00/ 25.4	0.31/ 7.9	0.28/ 7.1	16.00/ 7.26
H200WB	2	3.75/ 95.3	1.88/ 47.8	0.34/ 8.6	1.25/ 31.8	0.31/ 7.9	0.28/ 7.1	25.80/ 11.70
H250WB	2-1/2	4.22/ 107.2	2.13/ 54.1	0.34/ 8.6	1.25/ 31.8	0.31/ 7.9	0.28/ 7.1	26.00/ 11.79
H300WB	3	4.88/ 124.0	2.38/ 60.5	0.34/ 8.6	1.25/ 31.8	0.31/ 7.9	0.28/ 7.1	30.00/ 13.61
H350WB	3-1/2	5.38/ 136.7	2.69/ 68.3	0.34/ 8.6	1.25/ 31.8	0.31/ 7.9	0.28/ 7.1	38.00/ 17.24
H400WB	4	6.44/ 163.6	3.00/ 76.2	0.53/ 13.5	1.75/ 44.5	0.50/ 12.7	0.53/ 13.5	90.00/ 40.82



Hang-On® Conduit Hangers with Swing Bolts – Steel/Zinc Plated

H50-SWB	1/2	1.72/ 43.7	0.88/ 22.4	0.28/ 7.1	0.75/ 19.1	0.25/ 6.4	0.20/ 5.1	5.70/ 2.59
H75-SWB	3/4	1.84/ 46.7	0.91/ 23.1	0.28/ 7.1	0.88/ 22.4	0.25/ 6.4	0.20/ 5.1	7.00/ 3.18
H100-SWB	1	2.34/ 59.4	1.16/ 29.5	0.28/ 7.1	0.88/ 22.4	0.25/ 6.4	0.20/ 5.1	8.80/ 4.00
H125-SWB	1-1/4	2.66/ 67.6	1.38/ 35.1	0.28/ 7.1	0.88/ 22.4	0.25/ 6.4	0.20/ 5.1	10.00/ 4.54
H150-SWB	1-1/2	3.06/ 77.7	1.63/ 41.4	0.34/ 8.6	1.00/ 25.4	0.31/ 7.9	0.20/ 5.1	16.00/ 7.26
H200-SWB	2	3.59/ 91.2	1.88/ 47.8	0.34/ 8.6	1.25/ 31.8	0.31/ 7.9	0.20/ 5.1	25.80/ 11.70



Rigid Metal Conduit, IMC or EMT Hang-On® Hangers

Applications

- To secure rigid metal conduit, IMC or EMT to threaded rod, supports or direct to mounting surface.

Features

- Available with bolt or swing bolt.

Material/Finish

- Steel/zinc plated

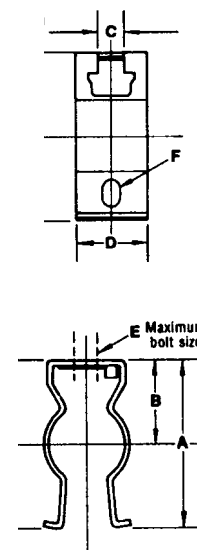
Certifications and Compliances

- UL Standard: 2239
- UL Listed: E336499
- CSA Standard: C22.2 No. 18.4
- CSA Certified: 065178

Catalog Number	Trade Size (Inches)	Dimensions in Inches/Millimeters						Weight Lbs./Kgs. Per 100
		A	B	C	D	E	F	

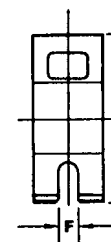
Hang-On® Conduit Hangers with Bolts – Steel/Zinc Plated

H50WB	1/2	1.88/ 47.8	0.88/ 22.4	0.28/ 7.1	0.75/ 19.1	0.25/ 6.4	0.28/ 7.1	6.00/ 2.72
H75WB	3/4	2.00/ 50.8	0.91/ 23.1	0.28/ 7.1	0.88/ 22.4	0.25/ 6.4	0.28/ 7.1	7.00/ 3.18
H100WB	1	2.41/ 61.2	1.16/ 29.5	0.28/ 7.1	0.88/ 22.4	0.25/ 6.4	0.28/ 7.1	9.00/ 4.08
H125WB	1-1/4	2.81/ 71.4	1.38/ 35.1	0.28/ 7.1	0.88/ 22.4	0.25/ 6.4	0.28/ 7.1	10.00/ 4.54
H150WB	1-1/2	3.22/ 81.8	1.63/ 41.4	0.69/ 17.5	1.00/ 25.4	0.31/ 7.9	0.28/ 7.1	16.00/ 7.26
H200WB	2	3.75/ 95.3	1.88/ 47.8	0.34/ 8.6	1.25/ 31.8	0.31/ 7.9	0.28/ 7.1	25.80/ 11.70
H250WB	2-1/2	4.22/ 107.2	2.13/ 54.1	0.34/ 8.6	1.25/ 31.8	0.31/ 7.9	0.28/ 7.1	26.00/ 11.79
H300WB	3	4.88/ 124.0	2.38/ 60.5	0.34/ 8.6	1.25/ 31.8	0.31/ 7.9	0.28/ 7.1	30.00/ 13.61
H350WB	3-1/2	5.38/ 136.7	2.69/ 68.3	0.34/ 8.6	1.25/ 31.8	0.31/ 7.9	0.28/ 7.1	38.00/ 17.24
H400WB	4	6.44/ 163.6	3.00/ 76.2	0.53/ 13.5	1.75/ 44.5	0.50/ 12.7	0.53/ 13.5	90.00/ 40.82



Hang-On® Conduit Hangers with Swing Bolts – Steel/Zinc Plated

H50-SWB	1/2	1.72/ 43.7	0.88/ 22.4	0.28/ 7.1	0.75/ 19.1	0.25/ 6.4	0.20/ 5.1	5.70/ 2.59
H75-SWB	3/4	1.84/ 46.7	0.91/ 23.1	0.28/ 7.1	0.88/ 22.4	0.25/ 6.4	0.20/ 5.1	7.00/ 3.18
H100-SWB	1	2.34/ 59.4	1.16/ 29.5	0.28/ 7.1	0.88/ 22.4	0.25/ 6.4	0.20/ 5.1	8.80/ 4.00
H125-SWB	1-1/4	2.66/ 67.6	1.38/ 35.1	0.28/ 7.1	0.88/ 22.4	0.25/ 6.4	0.20/ 5.1	10.00/ 4.54
H150-SWB	1-1/2	3.06/ 77.7	1.63/ 41.4	0.34/ 8.6	1.00/ 25.4	0.31/ 7.9	0.20/ 5.1	16.00/ 7.26
H200-SWB	2	3.59/ 91.2	1.88/ 47.8	0.34/ 8.6	1.25/ 31.8	0.31/ 7.9	0.20/ 5.1	25.80/ 11.70



COMMERCIAL PRODUCTS: RIGID, IMC AND EMT CLAMPS AND HANGERS