

**Description**

The H99RTAT is a Non-IC Air-Tite™ housing for providing accent, task, and general lighting. The H99RTAT is designed for use in non-insulated existing ceilings. Non-IC housing is Air-Tite™ code compliant. If insulation is present it must be kept 3 inches away from all sides of housing. For installation from below the ceiling. May be retrofit with compatible Halo LED lighting systems.

<b>Catalog #</b>		<b>Type</b>
<b>Project</b>		
<b>Comments</b>		<b>Date</b>
<b>Prepared by</b>		

**Specification Features**

**Housing**

- Formed of CRS with white powder coat finish
- For installation from below the finished ceiling

**Remodel Clips**

Four remodel clips secure housing and accommodates 1/2" and 5/8" ceiling materials

**Junction Box**

- Seven 1/2" trade size conduit knockouts with true pry-out slots
- Four pry-outs with integral strain relief for non-metallic (NM) sheathed cable

**Includes:**

**Quick Connect™**

- (3) Push wire nuts included, for speed & reliability
- Clear caps for wire connection visibility

**Air-Tite™ code compliant**

- ASTM E283 compliant

**Socket**

Fixed position porcelain socket with nickel plated brass screw shell provides consistent lamp positioning

**Thermal Protector**

Self resetting thermal protector deactivates fixture if overheating occurs due to improper lamping or misapplied insulation

**Trims**

Halo Fit-All concept offers multiple trim options in a variety of design styles, and functional beam distributions to control beam angle and lumen delivery in accommodating various lamp types including Halogen, CFL and LED

**Compliance**

- cULus Listed 1598 Luminaire
- cULus Damp Location Listed
- cULus Listed for Wet Location, covered ceiling, with select trims
- Air-Tite code compliant. Certified under ASTM E283; not exceeding 2.0 cfm (0.944 L/s) air leakage rate tested at a 1.57 psf (75 Pa) pressure differential
- RoHS compliant
- IP rated (Improper Lamp)
- Options to meet Trade Agreements Act requirements

\*Not to be used in direct contact with spray foam insulation (consult NEMA LSD57-2013)



**H99RTAT**

**4" Non-Insulated Ceiling  
Shallow Remodel  
Housing, 120V**

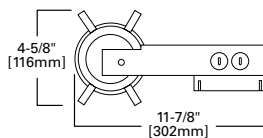
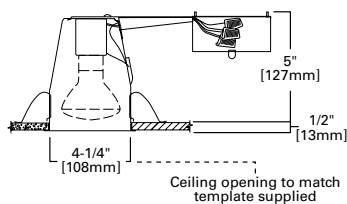


**FOR USE IN INSULATED  
CEILING**

**FOR DIRECT CONTACT  
WITH INSULATION\***

**AIR-TITE HOUSING  
RESTRICTS AIRFLOW  
BETWEEN CONDITIONED  
AND UNCONDITIONED  
AREAS**

**Dimensions**



**Special Features**

Quick Connect™ push wire nuts  
Air-Tite™ code compliant

## Ordering Information

Sample Number: H99RTAT 4003SC

Order housing, trim and lamp (by others) separately for a complete luminaire.

### Domestic Preferences<sup>(1)</sup>

[Blank] = Standard

TAA = Trade Agreements Act

### Housing

H99RTAT = 4" insulated ceiling AIR-TITE housing with adjustable socket bracket

### Trims

#### Reflectors



##### 999 Reflector Cone

OD: 5" [129mm]

999P=Specular Clear, White Trim

999RG=Residential Gold, White Trim

999W=White Reflector, White Trim

999H=Haze Reflector, White Trim

999MB=Specular Black Reflector,  
White Trim

999SN=Satin Nickel Reflector with Satin  
Nickel Trim

999TBZ=Tuscan Bronze Reflector with  
Tuscan Bronze Trim



##### 4003 Reflector

OD: 5" [127mm]

4003=Specular Reflector, White Trim



##### 4013 Full Cone Metal Baffle, Self-flanged

OD: 5" [129mm]

4013BB=Black Baffle, White Trim

4013WB=White Baffle, White Trim

#### Baffles



##### 953 Metal Baffle

OD: 5" [129mm]

953P=Black Baffle with White Trim

953W=White Baffle with White Trim

953SN=Satin Nickel Baffle with Satin  
Nickel Trim

953TBZ=Tuscan Bronze Baffle with Tuscan  
Bronze Trim



##### 990 Pinhole Baffle

OD: 5" [129mm]

990P=White Pinhole Trim

990SN=Satin Nickel Pinhole Trim

990TBZ=Tuscan Bronze Pinhole Trim



##### 992 Wall Wash with Coilex® Baffle

OD: 5" [129mm]

992P=White Eyelid, Black Baffle, White Trim

992W=White Eyelid and Baffle, White Trim

992SN=Satin Nickel Eyelid, Black Baffle,  
Satin Nickel Trim

992TBZ=Tuscan Bronze Eyelid, Black Baffle,  
Tuscan Bronze Trim



##### 993 Coilex Baffle

OD: 5" [129mm]

993P=Black Baffle with White Trim

993W=White Baffle with White Trim

993SN=Black Baffle with Satin  
Nickel Trim

993TBZ=Black baffle with Tuscan  
Bronze Trim

#### Baffles



##### 4001 Plastic Baffle

OD: 5" [129mm]

4001BB=Black Baffle, White Trim

4001WB=White Baffle, White Trim



#### Adjustable

##### 998 Eyeball 30° Tilt

OD: 5" [129mm]

998P=White Eyeball, White Trim

998SN=Satin Nickel Eyeball, Satin Nickel Trim

998TBZ=Tuscan Bronze Eyeball, Tuscan  
Bronze Trim



##### 4002 White Eyeball 30° Tilt

OD: 5" [129mm]

4002=White Eyeball, White Trim



#### Lens / Wet Location Listed

##### 951 Prismatic Glass Lens with Full Cone Reflector

OD: 5" [129mm]

951PS=Full Reflector and Glass Lens, White Trim

951SNS=Full Reflector and Glass Lens, Satin Nickel Trim

951TBZS=Full Reflector and Glass Lens, Tuscan Bronze  
Trim



##### 952 Cone Reflector

OD: 5" [129mm]

952PS=White Trim Ring, Dome Lens  
Shower Light



##### 945 Metropolitan Ice Light

OD: 5" [129mm]

945=Clear Frosted

945Blue=Blue Frosted



##### 4055 Plastic Baffle

OD: 5" [129mm]

4055=Flat Glass Lens, White Trim

#### Mounting Accessories

##### Filters and Lenses

The following filters and lenses can be substituted for the cover glass supplied for use with MR16 lamps.

##### Color Filters

L112=Red Gel Filter

L114=Ultraviolet Dichroic Filter

L120=Red Dichroic Filter

L121=Amber Dichroic Filter

L122=Yellow Dichroic Filter

L123=Green Dichroic Filter

L124=Daylight Blue Dichroic Filter

L125=Blue Dichroic Filter

L127=Cosmetic (2700°K) Dichroic Filter

L121=Yellow Gel Filter

L121=Amber Gel Filter

##### Optical Lenses

L100N=Diffuse Sand Blasted Lens. Provides an even beam spread from MR16 lamps—especially useful in wall washing.

L111=Soft Focus Lens. Smooths irregular beam pattern while maintaining high controlled illumination levels and beam angles.

L113=Prismatic Spread Lens. Provides a symmetrical broadening of MR16 lamp beams.

L115=Fans the MR16 beam to produce a wide rectangular illumination pattern.

Notes: (1) Only product configurations with this designated prefix are built to be compliant with the Trade Agreements Act of 1979 (TAA). Please refer to [DOMESTIC PREFERENCES](#) website for more information. Components shipped separately may be separately analyzed under domestic preference requirements. Accessories sold separately will be separately analyzed under domestic preference requirements. Consult factory for further information.

\*Outdoor rated lamp only (purchase separately)



LISTED  
For use in Halo listed housings.

#### Can also be used with the following LED Modules:

LT4 = 4" LED retrofit module

LA4 = 4" LED adjustable retrofit module

RL4 = 4" all-purpose retrofit LED retrofit module

RA4 = 4" adjustable gimbal all-purpose LED retrofit module

RSQ4 = 4" all-purpose square retrofit LED retrofit module

ML4 = 4" LED module (see ML4 spec sheets for trim options)

SLD4 = 4" surface LED downlight

SMD4 = 4" surface LED downlight



Cooper Lighting Solutions  
1121 Highway 74 South  
Peachtree City, GA 30269  
P: 770-486-4800  
[www.cooperlighting.com](http://www.cooperlighting.com)

Specifications and  
dimensions subject to  
change without notice.