



HALO[®]

ML Collection
LED Modular Recessed Lighting System

Introduction

The ML Concept

The HALO™ Modular LED recessed lighting system provides a broad range of lighting solutions ideal for residential and commercial use including single and multi-family dwellings, hospitality, retail, office and institutional spaces. The ML family delivers the energy savings, long life and sustainability of LED with excellent optical control providing cost effective and visually comfortable lighting.

Apertures include full cone reflectors, baffles, open and lens wall washers and directional styles. These combinations provide useful distributions including ambient, task, wall wash and accent facilitating a balanced lighting layout. Choose from round or square forms and a broad range of finishes to complement any décor.

LED module and trim combinations are compatible with industry standard 4, 5 and 6 inch housing types and can be used for new construction as part of the electrical rough-in or install from below - ideal for remodeling applications. They can also be retrofit into existing housings enabling older light-source technologies to be easily upgraded to LED.

With a color rendering index (CRI) of 90 minimum the ML family delivers excellent color quality and can be specified in field selectable 2700, 3000, 3500, 4000 and 5000K correlated color temperature (CCT). It can be used to meet the IECC and the State of California Title 24 high efficacy luminaire compliance. Consult the California Energy Commission Title 20 Appliance Efficiency Database for current listings. Meets the State of California voluntary lamp standards. Most combinations are ENERGY STAR® listed, reference qualified product listing.



Innovation you can rely on



The US Environmental Protection Agency's ENERGY STAR® program is designed to identify and promote energy efficient products and buildings. Cooper Lighting Solutions is proud to be an industry leader of certified products including many of our HALO recessed downlights. www.energystar.gov



International Energy Conservation Code (IECC) establishes energy-related heating, cooling, water heating, electrical and lighting system standards for residential, multi-family, and commercial buildings. www.iccsafe.org



HALO luminaires are manufactured and designed in accordance with the specifications outlined in Underwriters Laboratories Standard for Safety – Luminaires 1598. These luminaires additionally comply with the applicable requirements found within the National Electrical Code (NEC), NFPA 70.

Products bearing the cULus Listed marks indicate that the luminaires have been evaluated by Underwriters Laboratories, and are found to be compliant with the product specific requirements for the United States and Canada. www.ul.com



Cooper Lighting Solutions supports state codes enforcing more stringent and environmentally protective standards such as California Energy Commission's Title 24 Energy Efficiency standards. www.energy.ca.gov/title24

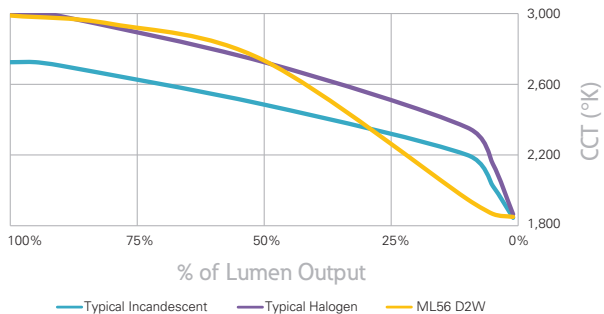


RoHS Directive - Restriction of Hazardous Substances. This global initiative seeks to eliminate hazardous materials in products. Key materials being eliminated from products through RoHS include: cadmium, mercury and lead among others.

D2W™

Select ML combinations are available in the D2W dim-to-warm option mimicking the black body dimming response of tungsten halogen lamps warming the output from approximately 3000 to 1800K or 2700 to 1800K CCT.

Dimming Profile



- Dims smoothly from 3000K to 1800K or 2700 to 1800K creating a rich, warm glow within the space.
- Maintains 90 CRI throughout the dimming range.
- Available in 600 lumen output.
- Use the same 120V dimmers as with any of the ML4 and ML56 LED modules.

D2W™

Lighting Control Solution

Set the mood

HALO HOME™

Simple. Smart. Secure.

HALO Home In-wall Smart Dimmer

HIWMA1BLE40AWH

Controls standard lighting fixtures with dimmer or HALO Home mobile app.

Features include:

- ON/OFF
- Dim
- Group
- Scene
- Schedule



ML4

4-inch LED downlighting system

The ML4 system is comprised of an LED module that can be installed in a canless solution or a retrofit solution. This compact LED module installs from below the ceiling into either a 3-3/4" opening or a 4-inch line voltage housing suitable for 2x6 residential framing or shallow plenum commercial construction.

For even tighter spacing use the canless installation or an ultra-shallow install from below housing which are suitable for 2x4 framing. For ceiling types that make recessed lighting difficult, like concrete pour, round and square surface cylinders support direct attachment to finished ceiling surfaces.

The ML4 delivers powerful beams of light providing optical control and high color quality.





housing



module



trim



Simple, compact, accurate

ML4 Retrofit

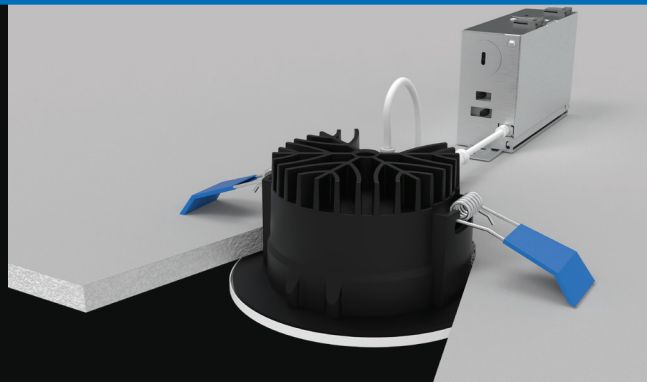
ML4-DM



module & jbox/driver



trim



ML4 Module / Optic

Balance efficiency with optical control

The ML4 module combines a chip on board LED array, driver and heat sink into an integrated light engine providing a highly efficient and reliable source of light. The precision molded optic organized the source flux producing tightly controlled and useful beams of light.

The ML4 module is delivered with a 40° flood optic pre-installed and is suitable for a wide range of applications. Alternate beam patterns, 25° narrow flood, 55° wide flood, and 25° asymmetric wall wash are available as accessories and are easily interchangeable in the field. Each optic includes a media holder integral with the optic and accepts industry standard 2" diameter lenses provided additional creating control.



ML4 optics

TIR4D25NFL
25 degree
narrow flood



TIR4D40FL
40 degree
flood



TIR4D55WFL
55 degree
wide flood



TIR4D25AWW
25 degree narrow flood
asymmetric / wall wash



TIR45MH12PK
replacement
media holder



media holder with lens
installed on optic



ML4 Retrofit Ordering Information

A complete luminaire consists of a fixture fitting + trim, order separately.

Catalog Number	Description	Accessories
ML4D10FL9FS1E	4" Retrofit, 1000lms, 5CCT selectable, 90CRI, 40° optic, 120V, LE/TE 5% Dim	TIR4D25NFL = 25° narrow flood optic TIR4D40FL = 40° flood optic TIR4D55WFL = 55° wide flood optic TIR4D25AWW = 25° narrow flood asymmetric wall wash optic TIR45MH12PK = replacement media holder, package of 12 L100 Series = 2.0" lens and filters, see spec sheet
ML4D10FL9FS1E010	4" Retrofit, 1000lms, 5CCT selectable, 90CRI, 40° optic, 120-277V 0-10V 5% Dim	
ML4D08FL95FS1E	4" Retrofit, 800lms, 5CCT selectable, 95CRI, 40° optic, 120V LE/TE 5% Dim	
ML4D06FLD2W1E	4" Retrofit, 600lms, Selectable D2W, 90CRI, 40° optic 120V LE/TE 5% Dim	



ML4-DM Ordering Information

A complete luminaire consists of a fixture fitting + trim, order separately.

Catalog Number	Description	Accessories
ML4DM10LSFL9FS1E	4" Canless, Lumen Select(600/800/1000lms), 5CCT selectable, 90CRI, 40° optic, 120V, LE/TE 5% Dim	TIR4D25NFL = 25° narrow flood optic TIR4D40FL = 40° flood optic TIR4D55WFL = 55° wide flood optic TIR4D25AWW = 25° narrow flood asymmetric wall wash optic TIR45MH12PK = replacement media holder, package of 12 L100 Series = 2.0" lens and filters, see spec sheet
ML4DM10LSFL9FSE010	4" Canless, Lumen Select(600/800/1000lms), 5CCT selectable, 90CRI, 40° optic, 120-277V 0-10V 5% Dim	
ML4DM08LSFL95FS1E	4" Canless, Lumen Select(400/600/800lms), 5CCT selectable, 95CRI, 40° optic, 120V LE/TE 5% Dim	
ML4DM06FLD2W1E	4" Canless, 600lms, Selectable D2W, 90CRI, 40° optic 120V LE/TE 5% Dim	



ML4 Trims

The finishing touch

TL4 series trims are offered in four luxurious electro-plated finishes; brushed nickel, oil rubbed bronze, brushed copper and German bronze. Use to complement your thoughtfully selected interior finishes.

The TL4 trims are available in three trim types; open, lens, and lens wall wash.

The trims are attached by four powerful rare earth Neodymium magnets; they float on a bubble of magnetic flux keeping the trims held securely in place.



white



black



german bronze



brushed copper



brushed nickel



oil rubbed bronze

Open pinhole

The round and square open pinhole apertures are optimized for use with beam forming optics delivering full output with visual cutoff and brightness control. Magnetic attachment makes installation a snap and allows for minor adjustment accommodating real-world construction tolerances. Available in painted and electro-plated finishes. Damp location listed.

TL41R

2" round open pinhole



TL41RMW
matte white flange



TL41RBN
brushed nickel flange



TL41RBCu
brushed copper flange



TL41RMB
matte black flange



TL41RORB
oil rubbed bronze flange



TL41RGB
german bronze flange

TL42S

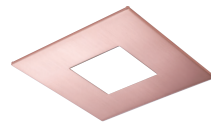
2" square open pinhole



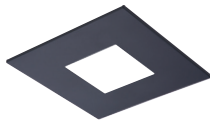
TL42SMW
matte white flange



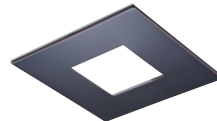
TL42SBN
brushed nickel flange



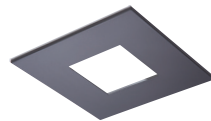
TL42SBCu
brushed copper flange



TL42SMB
matte black flange



TL42SORB
oil rubbed bronze flange



TL42SGB
german bronze flange

Lens pinhole

The round and square lens pinhole apertures soften the light with an integral diffuse lens. Magnetic attachment makes installation a snap and allows for minor adjustment accommodating real-world construction tolerances. Available in painted and electro-plated finishes; the lens frame is available in white or black and color coordinated with the flange finish. Wet location listed.

TL43R

2" round lens pinhole



TL43R2GMWWB
matte white flange,
white lens frame



TL43R2GMWBB
matte black flange,
black lens frame



TL43R2GBNBB
brushed nickel flange,
black lens frame



TL43R2GBCuBB
brushed copper flange,
black lens frame



TL43R2GMBBB
matte black flange,
black lens frame



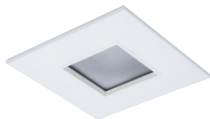
TL43R2GORBBB
oil rubbed bronze flange,
black lens frame



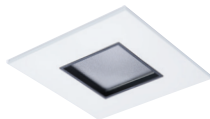
TL43R2GGBBB
german bronze flange,
black lens frame

TL44S

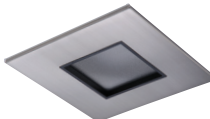
2" square lens pinhole



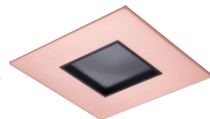
TL44S2GMWWB
matte white flange,
white lens frame



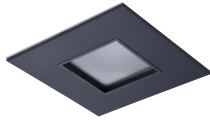
TL44S2GMWBB
matte black flange,
black lens frame



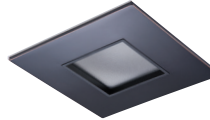
TL44S2GBNBB
brushed nickel flange,
black lens frame



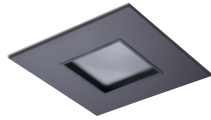
TL44S2GBCuBB
brushed copper flange,
black lens frame



TL44S2GMBBB
matte black flange,
black lens frame



TL44S2GORBBB
oil rubbed bronze flange,
black lens frame



TL44S2GGBBB
german bronze flange,
black lens frame

Conical Reflector

The round lens conical reflector softens the light with an integral diffuse lens. Magnetic attachment makes installation a snap and allows for minor adjustment accommodating real-world construction tolerances. Available in white finish. Wet location listed.

TL40R

3-1/2" round conical reflector



TL40R2GMW

matte white flange,
diffuse lens white reflector

Lens wall wash

The round and square lens wall wash apertures use the unique asymmetric optic that redirects light through a linear spread lens providing smooth vertical illumination. Use to light walls, paintings and textured surfaces including stone, masonry and wood. Magnetic attachment makes installation a snap and allows for minor adjustment accommodating real-world construction tolerances. The lens frame is available in white or black and color coordinated with the flange finish. Wet location listed.

TL45R

2" round lens wall wash pinhole



TL45R6GMWWB

matte white flange, white lens frame



TL45R6GMWBB

matte white flange, black lens frame

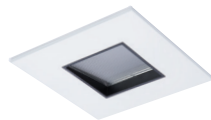
TL46S

2" square lens wall wash pinhole



TL46S6GMWWB

matte white flange, white lens frame

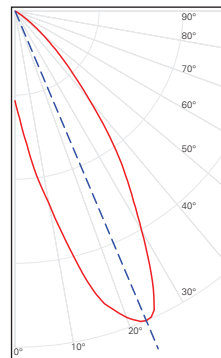


TL46S6GMWBB

matte white flange, black lens frame

Candle Power Distribution

TIR4D25AWW asymmetric wall wash optic



Providing Accents

The asymmetric / wall wash optic combined with the open and lens pinhole apertures delivers a directional beam of light effective for accenting objects of interest including art and architecture.

The aiming angle is pre-set at 22.5 degrees, a useful mid-point adjustment, eliminating the need for individual elevation adjustment. This simple yet effective lighting technique provides contrast ratios creating visual interest and drama in your environments.



TIR4D25AWW
25 degree narrow flood
asymmetric / wall wash

Installed in ML4-DM module.

Complete unit with
TL46S6GMWBB installed.



Housings

ML4 Housing Compatibility

Halo LED

H995ICAT, H995RICAT

Halo Shallow Housings

H99ICAT, H99RTAT, H99TAT, H1499ICAT, H1499RTAT, H1499T75,
H1499TAT, E4ICATSB, E4TATSB, E4RTATSB

Halo Ultra-Shallow Housings

H245ICAT, H245RICAT

Halo Surface Mount Housings

HS4RMW, HS4RMB, HS4SMW, HS4SMB

Halo
4" LED
housings



H995ICAT



H995RICAT



Competitor Housing Compatibility

The ML4 comes with a dedicated LED connector for High Efficacy luminaire compliance (California Title 24, International Energy Conservation Code) and is cULus Listed for installation with Halo® recessed LED housings (H245ICAT, H245RICAT, H995ICAT, H995RICAT).

The ML4 is also compatible with a E26 Edison screw base adapter to accommodate many industry standard screw base housings. The series is cULus Listed and UL Classified for retrofit in Halo and others housings.



4" Housings

Utilitech CR04ICAT	Lithonia Lighting® L3, L3R	Juno® TC1, TC1R
Thomas® PS4	Commercial Electric™ HBR2000B	Progress Lighting® P830-TG, P832-TG



HL4RSMF

New construction rough-in frame for use with Halo 4-inch H245RICAT, H99RTAT, H1499RICAT, and E4RTATSB remodeler housings.

Note: Remodeler housings are installed after ceiling is installed.

Housings

Halo LED 4-inch

H995ICAT= 4" LED, Insulated Ceiling, Air-Tite, New Construction Housing
H995RICAT= 4" LED, Insulated Ceiling, Air-Tite, Remodel Housing

Halo Ultra-Shallow LED 4-inch

H245ICAT= 4" LED, Insulated Ceiling, Air-Tite, Ultra-Shallow New Construction Housing
H245RICAT= 4" LED, Insulated Ceiling, Air-Tite, Ultra-Shallow Remodel Housing

Halo Standard Housings 4-inch*

H99ICAT= 4" IC, Air-Tite, Shallow New Construction Housing
H99TAT= 4" Non-IC, Air-Tite, Shallow New Construction Housing
H99RTAT= 4" Non-IC, Air-Tite, Shallow Remodel Housing
E4ICATSB= 4" IC, Air-Tite, Shallow New Construction Housing
E4TATSB= 4" Non-IC, Air-Tite, Shallow New Construction Housing
E4RTATSB= 4" Non-IC, Air-Tite, Shallow Remodel Housing

Halo Low Voltage Housings 4-inch*

H1499ICAT= 4" IC, Air-Tite, New Construction Housing, 120V - 12V Low Voltage MR16
H1499TAT= 4" Non-IC, Air-Tite, Shallow New Construction Housing, 120V - 12V Low Voltage MR16
H1499RTAT= 4" Non-IC, Air-Tite, Shallow Remodel Housing, 120V - 12V Low Voltage MR16
H1499T75= 4" Non-IC, New Construction Housing, 120V/277V - 12V Low Voltage, MR16

Accessories

T24HWKIT= Title 24 Cable harness kit used to convert incandescent and low voltage housings to LED.
HL4RSMF= 4" round and square new construction rough-in frame**



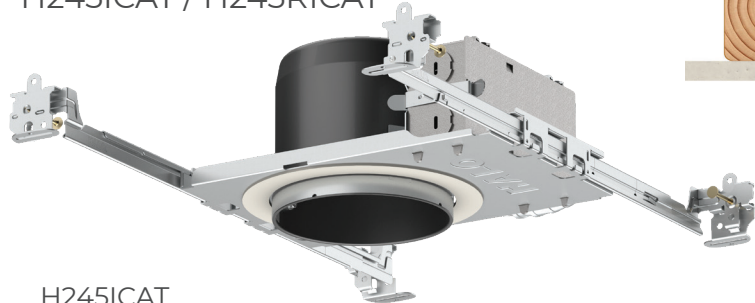
*Use T24HWKIT, Title 24 Cable Harness Kit, to convert incandescent and low voltage housings to LED.

**Compatible with H245RICAT, H99RTAT, H1499RICAT, and E4RTATSB remodeler housings.

Juno®, Lithonia Lighting®, Thomas® Lighting, Progress® Lighting and Commercial Electric™ and their product brand names, where identified above, are tradenames or trademarks of each respective company and Cooper Lighting Solutions makes no representations on these trademarks.

Ultra-shallow housings

H245ICAT / H245RICAT



H245ICAT

- Suitable for 2x4 framing and shallow plenum construction
- Housing adjusts for 1/2" to 1-1/4" ceiling thickness
- Suitable for direct contact with air-permeable insulation and air tight
- Captive, pre-installed Got Nail!™ bar hangers adjust from 6" to 24", integral nail penetrates standard and engineered lumber
- Slide-N-Side™ non-metallic (NM) wire traps allow wiring outside the box, 4-port push wire nuts for quick and reliable mains voltage connections



H245RICAT

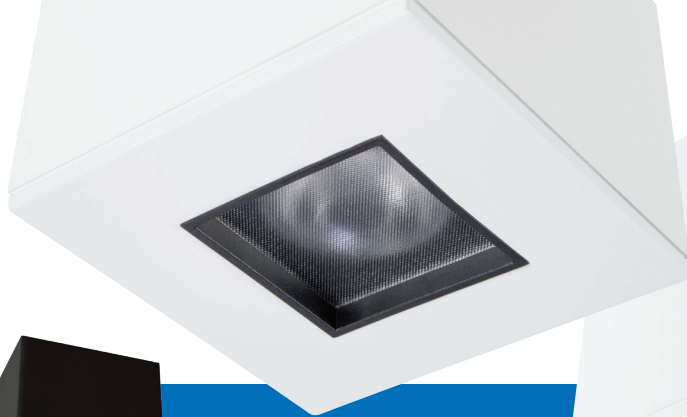
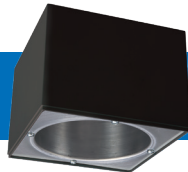
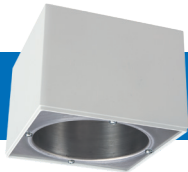
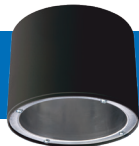
- Suitable for 2x4 framing or shallow plenum construction
- Compatible with 3/8" to 3/4" ceiling thickness
- Retractable mounting springs are designed for easy installation and removal for service or splice inspection
- Quick Connect™ remodel wiring tray increases installation speed and reliability
- Hinged and captive door on junction box allows for easy access
- Insulated ceiling listed and Air-Tite™



Surface Housing

Square and round surface mount

- round or square housing mounts to junction box
- spider plate allows alignment of square with architecture
- exclusively for use with Halo ML4 LED module and trims
- finishes: matte white and matte black



Surface Mount Housing

HS4R= Surface round, 120-277V
HS4S= Surface square, 120-277V

Finish

MW=Matte white
MB=Matte black

ML56

LED downlighting system

The HALO ML56 LED downlight collection is comprised of LED modules with 5" and 6" trims. ML56 LED modules are offered with field selectable 900, 1200 and 1500 lumens. The ML56 LED series offers a versatile collection of energy-efficient LED downlights for general lighting in commercial and residential applications. Install in either new construction or retrofitting existing 5" and 6" compatible housings (Edison screw base adapter included). HALO LED ML56 collection features excellent color (90 & 95CRI) and offers field selectable five color temperatures (2700K, 3000K, 3500K, 4000K and 5000K).



high performance for volumetric spaces

*E26 Edison Screw Base Adapter (included for retrofit of non-LED housings).

Housing + Module + Trim =
Complete luminaire



ML56 Module

LED light engine

The ML56 light modules are integrated LED engines that include a LED chip package, LED driver, heat sink, and lens in a modular design that allows interchangeable use with designated ML56 5" and 6" LED trims.

The ML56 light module design features an inside frost diffusing lens that looks like a traditional lamp for visual comfort and aesthetic familiarity. The diffusing lens provides uniform illumination.



ML56 Ordering Information A complete luminaire consists of a housing, LED module and trim. Order separately.

LED Modules		Beam Forming Optic / Media 1200 Series Accessories*	ML56 System Accessories	
<p>600 Series ML5606927= 5"/6" LED module, 90CRI, 2700K ML5606930= 5"/6" LED module, 90CRI, 3000K ML5606935= 5"/6" LED module, 90CRI, 3500K ML5606940= 5"/6" LED module, 90CRI, 4000K</p> <p>600 Series D2W - Dim to Warm Light Module ML5606D2W930= 5"/6" DIM to warm LED module, 600 lumen, 90CRI, 3000K to 1850K</p>	<p>900 Series ML5609927= 5"/6" LED module, 90CRI, 2700K ML5609930= 5"/6" LED module, 90CRI, 3000K ML5609935= 5"/6" LED module, 90CRI, 3500K ML5609940= 5"/6" LED module, 90CRI, 4000K</p> <p>900 Series D2W - Dim to Warm Light Module ML5609D2W930= 5"/6" DIM to warm LED module, 900 lumen, 90CRI, 3000K to 1850K</p>	<p>1200 Series ML5612927= 5"/6" LED module, 90CRI, 2700K ML5612930= 5"/6" LED module, 90CRI, 3000K ML5612935= 5"/6" LED module, 90CRI, 3500K ML5612940= 5"/6" LED module, 90CRI, 4000K ML5612927D010= 5"/6" LED module, 90CRI, 2700K, 0-10V⁽¹⁾ ML5612930D010= 5"/6" LED module, 90CRI, 3000K, 0-10V⁽¹⁾ ML5612935D010= 5"/6" LED module, 90CRI, 3500K, 0-10V⁽¹⁾ ML5612940D010= 5"/6" LED module, 90CRI, 4000K, 0-10V⁽¹⁾</p> <p>D2W - Dim to Warm Light Module ML5612D2W930= 5"/6" DIM to warm LED module, 1200 lumen, 90CRI, 3000K to 1850K</p>	<p>BFR56NFL= Beam forming reflector kit, narrow flood, 25° nominal BFR56MH= Media holder, accepts one 3.45" lens. Requires BFR56NFL & L345SF, order separately L345SF= 3.45" diameter soft focus lens. Requires BFR56NFL and BFR56MH, order separately</p>	<p>ML7RAB=Retrofit adapter band for housings without torsion spring receivers. The ML7RAB kit supplies parts to retrofit four housings; the kit includes: 4 – Retrofit adapter bands with screws and locking wire nuts</p>

*Beam forming optics/media not recommended for use with ML5612D2W930 LED module.

*For California non-E26 base product place -CA suffix at the end of catalog number (ie ML5606927-CA).

(1) UNV 120-277V 50-60Hz, 0-10V analog 5% dimming

Consult ML56 LED Light module specification sheets for applicable trim listings.

ML56 Module

The LED light modules diffusing lens is interchangeable with an optional 25° narrow flood (NFL) beam forming lens.



standard diffusing lens



narrow flood (NFL) lens

ML56 Optics

standard diffusing lens
(included)



BFR56NFL
narrow flood lens (NFL)



BFR56MH*
media holder
(requires BFR56NFL & L345SF, ordered separately)

L345SF
soft focus lens
(requires BFR56NFL & BFR56MH, ordered separately)



Trims

The finishing touch

Multiple 5" and 6" baffle, reflector, and eyeball options allow the Halo ML56 LED downlighting system to be used in a variety of interior spaces. Choose the desired trim size, finish, and style to meet the needs of the application.

- Reflector and baffle trims are wet location listed for shower applications. Eyeball trims are damp location listed.
- Reflector and baffle trims make the ML56 and any compatible housing Air-Tite.
- Consult ML56 LED light module specification sheet for applicable trim listings.

Trims

590 Series - 5" LED Trims

591WB=5" LED trim, polymer "dead-front", shallow white baffle & flange – shallow and standard housings (For use with 600 Series LED light modules only)

592SC=5" LED trim, specular reflector & white flange

592H=5" LED trim, haze reflector & white flange

592W=5" LED trim, white reflector & flange

593WB=5" LED trim, white micro-step baffle & flange

593BB=5" LED trim, black micro-step baffle & white flange

593SNB=5" LED trim, satin nickel micro-step baffle & flange

593TBZB=5" LED trim, tuscan bronze micro-step baffle & flange

594WB=5" LED directional trim, white eyeball, baffle & flange – shallow and standard housings

594SNB=5" LED directional trim, satin nickel eyeball, baffle & flange – shallow and standard housings

594TBZB=5" LED directional trim, tuscan bronze eyeball, baffle & flange – shallow and standard housings

595WW=5" LED trim, wall wash - specular reflector, repositionable specular kick reflector, white flange

596WB=5" LED trim, white shallow baffle & flange – shallow and standard housings

690 Series - 6" LED Trims

691WB=6" LED trim, polymer "dead-front", white shallow baffle & flange – shallow and standard housings (For use with 600 Series LED light modules only)

692SC=6" LED trim, specular reflector & white flange

692H=6" LED trim, haze reflector & white flange

692W=6" LED trim, white reflector & flange

693WB=6" LED trim, white micro-step baffle & flange

693BB=6" LED trim, black micro-step baffle & white flange

693SNB=6" LED trim, satin nickel micro-step baffle & flange

693TBZB=6" LED trim, tuscan bronze micro-step baffle & flange

694WB=6" LED directional trim, white eyeball, baffle & flange – shallow and standard housings

694SNB=6" LED directional trim, satin nickel eyeball, baffle & flange – shallow and standard housings

694TBZB=6" LED directional trim, tuscan bronze eyeball, baffle & flange – shallow and standard housings

695WW=6" LED trim, wall wash - specular reflector, repositionable specular kick reflector, white flange

696WB=6" LED trim, white shallow baffle & flange – for use with shallow and standard housings

Accessories

ML56CLIP=Friction clip mounting kit - for retrofitting non-torsion spring housings, 6" clips*
WW595SC=5" Wall wash insert - kick reflector for 595WW (1-included with trim) double or corner wall wash**

WW695SC=6" Wall wash insert - kick reflector for 695WW (1-included with trim) double or corner wall wash**

TRM590WH=5" LED oversize trim ring for use with 59* series trims, white 6.3" I.D., 7.5" O.D. Ring slips over LED trim. Inset design allows 5" trim to fit into oversize ring for an even trim surface
TRM690WH=6" LED oversize trim ring for use with 69* series trims, white 6.9" I.D., 9.5" O.D. Ring slips over LED trim. Inset design allows 6" trim to fit into oversize ring for an even trim surface

*ML56CLIP is compatible with 6" baffle and reflector trims only (691, 692, 693, 695, 696 series). For eyeball trim (694 series) use ML7RAB retrofit adapter band.

**Wall wash trims 595WW and 695WW feature an exclusive repositionable kick reflector for fine-tuning adjustment of the wall wash effect. The WW595SC and WW695SC are repositionable kick reflectors sold separately for addition to the wall wash trim when a double or corner wall wash is needed, or for replacement of original kick reflector included with the trim.

Reflectors

Create wide light patterns and maximize the efficiency of the light source.



Eyeballs

Provide precise, variable directional lighting. Useful for directing to accent wall hangings, mantels, and task areas



Baffles

Trap and shape light to minimize aperture glare, reduce ceiling brightness, and narrow the focus of the downlighting beam.



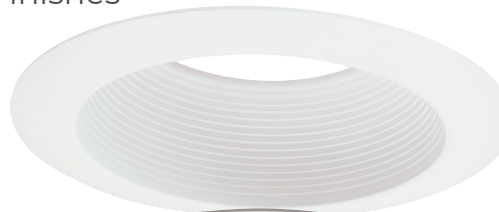
Wall Washer

Provide same vertical surface illumination. The ML56 repositionable kick reflector allows the user to position within the 360 degree trim aperture.

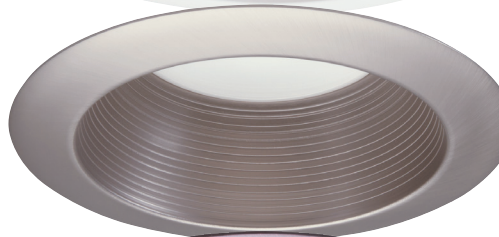


Trim Ring Finishes

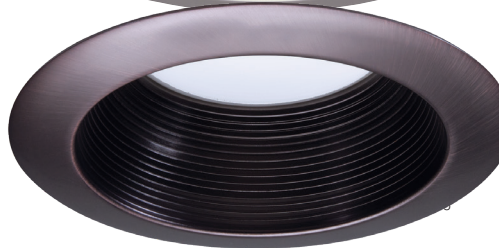
white



satin nickel



tuscan bronze



5" Trims

591

5" "dead front" shallow baffle



591WB

white "dead front" shallow baffle
(for 600 Series module only)

592

5" reflector



592W

white



592SC

specular clear



592H

haze

595

5" wall wash



595WW

specular reflector

596

5" shallow baffle

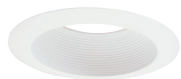


596WB

white shallow baffle and trim

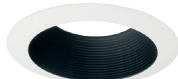
593

5" baffle



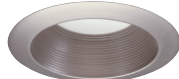
593WB

white baffle and trim



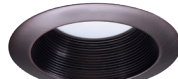
593BB

black baffle, white trim



593SN

satin nickel baffle and trim



593TBZ

tuscan bronze baffle and trim

594

5" eyeball



594WB

white



594SN

satin nickel



594TBZ

tuscan bronze

Accessory

5" oversize trim ring



TRM590WH
white

6" Trims

691

6" "dead front" shallow baffle



691WB

white "dead front" shallow baffle
(for 600 Series module only)

692

6" reflector



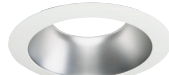
692W

white



692SC

specular clear



692H

haze

695

6" wall wash



695WW

specular reflector

696

6" shallow baffle



696WB

white shallow baffle and trim

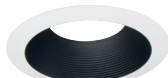
693

6" baffle



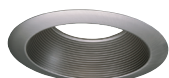
693WB

white baffle and trim



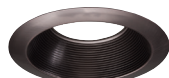
693BB

black baffle, white trim



693SN

satin nickel baffle and trim



693TBZ

tuscan bronze baffle and trim

694

6" eyeball



694WB

white



694TBZ

tuscan bronze

Accessory

6" oversize trim ring



TRM690WH
white

Housings

ML56 Housing Compatibility

Halo LED

6-inch: H750ICAT, H750RICAT, H750T, H750TCP, H2750ICAT, H2750RICAT, E750ICAT, E750RICAT

5-inch: H550ICAT, H550RICAT, E550ICAT, E550RICAT

Halo LED retrofit

6-inch: ML7E26RFK, ML7BXFK

Halo Standard Housings

6-inch: H7ICAT, H7RICAT, H7ICT, H7RICT, H7ICATNB, H7ICTNB, H7T, H7RT, H7TNB, H7TCP, H7UICAT
E7ICAT, E7RICAT, E7ICATNB, E7TAT, E7RTAT, E7TATNB

5-inch: H5ICAT, H5RICAT, H5ICATNB, H5T, H5TNB, H5RT
E5ICAT, E5RICAT, E5ICATNB, E5TAT, E5TATNB, E5RTAT

Halo Shallow Housings

6-inch: H27ICAT, H27RICAT, H27T, H27RT
E27ICAT, E27RICAT, E27TAT, E27RTAT

5-inch: H25ICAT, H25RICAT, H25ICATNB

Halo 0-10V Housings

6-inch: H750ICATD010, H750RICATD010

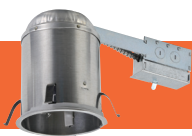
5-inch: H550ICATD010, H550RICATD010



Halo
5" LED
 housings



H550ICAT



H550RICAT

Halo
6" LED
 housings



H750ICAT



H750RICAT



H2750ICAT



H2750RICAT

Housings

Halo LED 6-inch

H750ICAT= 6" LED, Insulated Ceiling, Air-Tite, New Construction Housing
H750RICAT= 6" LED, Insulated Ceiling, Air-Tite, Remodel Housing
H750T= 6" LED, Non-IC, Air-Tite, New Construction Housing
H750TCP= 6" LED, Non-IC, New Construction/Remodel Chicago Plenum Housing
H750ICATD010= 6" LED, IC rated, air-tite, new construction housing, 0-10V compatibility
H750RICATD010= 6" LED, IC rated, air-tite, remodel housing, 0-10V compatibility
H2750ICAT= 6" LED, Shallow, Insulated Ceiling, Air-Tite, New Construction (use with 691X, 694X, 696X trims only)
H2750RICAT= 6" LED, Shallow, Insulated Ceiling, Air-Tite, Remodel (use with 691X, 694X, 696X trims only)
E750ICAT= 6" LED, Insulated Ceiling, Air-Tite, New Construction Housing
E750RICAT= 6" LED, Insulated Ceiling, Air-Tite, Remodel Housing

Halo LED 5-inch

H550ICAT= 5" LED, Insulated Ceiling, Air-Tite, New Construction Housing
H550RICAT= 5" LED, Insulated Ceiling, Air-Tite, Remodel Housing
H550ICATD010= 5" LED, IC rated, air-tite, new construction housing, 0-10V compatibility
H550RICATD010= 5" LED, IC rated, air-tite, remodel housing, 0-10V compatibility
E550ICAT= 5" LED, Insulated Ceiling, Air-Tite, New Construction Housing
E550RICAT= 5" LED, Insulated Ceiling, Air-Tite, Remodel Housing

Halo LED retrofit

ML7E26RFK= 6" Retrofit Enclosure, Non-IC, E26 Screw base Interface
ML7BXFK= 6" Retrofit Enclosure, Non-IC, BX Whip

Halo Standard Housings 6-inch

H7ICAT= 6" Insulated Ceiling, Air-Tite New Construction Housing
H7RICAT= 6" Insulated Ceiling, Air-Tite Remodel Housing
H7ICT= 6" Insulated Ceiling, New Construction Housing
H7RICT= 6" Insulated Ceiling, Remodel Housing
H7ICATNB= 6" Insulated Ceiling, Air-Tite New Construction Housing, No Socket Bracket
H7ICTNB= 6" Insulated Ceiling, New Construction Housing, No Socket Bracket
H7T= 6" Non-IC, New Construction Housing
H7RT= 6" Non-IC, Remodel Housing
H7TNB= 6" Non-IC, New Construction Housing, No Socket Bracket
H7TCP= 6" Non-IC, Chicago Plenum, New Construction/Remodel Housing
H7UICAT= 6" Insulated Ceiling, Universal, Air-Tite, New Construction Housing
E7ICAT= 6" Insulated Ceiling, Air-Tite New Construction Housing
E7RICAT= 6" Insulated Ceiling, Air-Tite Remodel Housing
E7ICATNB= 6" Insulated Ceiling, Air-Tite New Construction Housing, No Socket Bracket
E7TAT= 6" Non-IC, New Construction Housing
E7RTAT= 6" Non-IC, Remodel Housing
E7TATNB= 6" Non-IC, New Construction Housing, No Socket Bracket

Halo Standard Housings 5-inch

H5ICAT= 5" Insulated Ceiling, Air-Tite New Construction Housing
H5RICAT= 5" Insulated Ceiling, Air-Tite Remodel Housing
H5ICATNB= 5" Insulated Ceiling, Air-Tite New Construction Housing, No Socket Bracket
H5T= 5" Non-IC, New Construction Housing
H5RT= 5" Non-IC, Remodel Housing

Halo Standard Housings 5-inch (continued)

H5TNB= 5" Non-IC, New Construction Housing, No Socket Bracket
E5ICAT= 5" Insulated Ceiling, Air-Tite New Construction Housing
E5RICAT= 5" Insulated Ceiling, Air-Tite Remodel Housing
E5ICATNB= 5" Insulated Ceiling, Air-Tite New Construction Housing, No Socket Bracket
E5TAT= 5" Non-IC, New Construction Housing
E5RTAT= 5" Non-IC, Remodel Housing
E5TATNB= 5" Non-IC, New Construction Housing, No Socket Bracket

Halo Shallow Housings 6-inch*

H27ICAT= 6" Shallow, Insulated Ceiling, Air-Tite New Construction
H27RICAT= 6" Shallow, Insulated Ceiling, Air-Tite Remodel Housing
H27T= 6" Shallow, Non-IC, New Construction Housing
H27RT= 6" Shallow, Non-IC, Remodel Housing
E27ICAT= 6" Shallow, Insulated Ceiling, Air-Tite New Construction
E27RICAT= 6" Shallow, Insulated Ceiling, Air-Tite Remodel Housing
E27TAT= 6" Shallow, Non-IC, New Construction Housing
E27RTAT= 6" Shallow, Non-IC, Remodel Housing

Halo Shallow Housings 5-inch**

H25ICAT= 5" Shallow, Insulated Ceiling, Air-Tite New Construction
H25RICAT= 5" Shallow, Insulated Ceiling, Air-Tite Remodel
H25ICATNB= 5" Shallow, Insulated Ceiling, Air-Tite New Construction, No Socket Bracket

*use with 691X, 694X, 696X trims only

**use with 591X, 594X, 596X trims only

Competitor Housing Compatibility

The ML56 LED light module - trim combination is cULus Listed or UL Classified for use with any 5" or 6" diameter recessed housing constructed of steel or aluminum with an internal volume that exceeds 115 in³ in addition to those noted.

The ML56 system is UL Classified for retrofit in select 5" and 6" incandescent housings by others.

5" Housings	600	900	1200
Juno Standard and Shallow Housings (use with 591X, 594X, 596X trims only) IC20, IC25S, IC25W, TC20	●	●	

6" Housings	600	900	1200
Juno Standard Housings IC22, IC22R, IC22W, IC22S, IC23, IC23W, TC2, TC2R, IC2	●	●	●
Juno Shallow Housings (use with 691X, 694X, 696X trims only) C21, IC21R	●	●	
Capri Standard Housings CR1, PR1, QL1	●	●	●
Capri Shallow Housings (use with 691X, 694X, 696X trims only) R9ASIC/PS9RM	●	●	
Elco HL7ICA (EL7ICA)	●	●	●
Lithonia Lighting Standard Housings LC6, L7X	●	●	●

6" Housings	600	900	1200
Lithonia Lighting Shallow Housing (use with 691X, 694X, 696X trims only) L7XP	●	●	
Thomas PS1	●	●	●
Commercial Electric C7ICA, H3	●	●	●
Progress Standard Housing P87-AT†	●	●	●
Progress Shallow Housing (use with 691X, 694X, 696X trims only) P86TG†	●	●	
Lightolier 1104ICSt, 1104ICR†	●	●	●



† For 600 series and 900 series replace torsion springs with friction clips. Friction clip kit sold separately: ML56CLIP.

For 1200 Series install the Retrofit Adapter Band in housing. Order separately: ML7RAB.

Juno®, Capri, Lightolier®, Lithonia Lighting®, Thomas® Lighting, Elco Lighting®, Progress® Lighting and Commercial Electric™ and their product brand names, where identified above, are tradenames or trademarks of each respective company and Cooper Lighting Solutions makes no representations on these trademarks.



CHAMPS SPORTS



Richard Cadan Photography
www.richardcaden.com

Lighting Product Lines

Ametrix
AtLite
Corelite
Ephesus
Fail-Safe
Halo
Halo Commercial
Invue
io
Iris
Lumark
Lumière
McGraw-Edison
Metalux
MWS
Neo-Ray
Portfolio
RSA
Shaper
Streetworks
Sure-Lites

Our Controls Product Lines

Fifth Light Technology
Greengate
iLight (International Only)
iLumin
Zero 88

Connected Lighting Systems

Distributed Low-Voltage Power
HALO Home
iLumin Plus
Enlighted
WaveLinx
Trellix



Cooper Lighting Solutions

1121 Highway 74 South
Peachtree City, GA 30269
P: 770-486-4800
www.cooperlighting.com

Canada Sales

5925 McLaughlin Road
Mississauga, Ontario L5R 1B8
P: 905-501-3000
F: 905-501-3172

© 2022 Cooper Lighting Solutions
All Rights Reserved
Printed in USA
Publication No. BR518101EN
August 2022

Cooper Lighting Solutions is a registered trademark.

All other trademarks are property of their respective owners.

Product availability, specifications, and compliances are subject to change without notice.