



# HYDRAULIC & RATCHETING PUNCH KITS





# PUNCH KITS

## PUNCH KITS

### FEATURES & BENEFITS

- Great for steel, stainless steel, aluminum, plastic, and fiberglass
- Laser etched markings on cups and dies
- 3 point die design – eliminates slug from binding in cup - They just fall out of the cup
- Our Interchangeable cups and dies work with competing brands of tools
- Tools require 50% less torque than competing brands of tools
- Cushioned handle ensures a sturdy grip and provides extra comfort
- Ultra heavy-duty carrying case



### RATCHETING PUNCH TOOL - RPTK

**NEW**



### HYDRAULIC PUNCH TOOL - HPTK

Laser etched marking on articulating head provides alignment for easy storage of tool in carrying case

Tool features fully articulating head- 360° capability



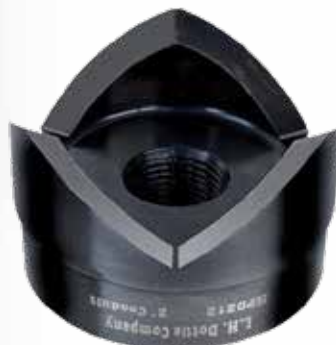
Cushioned handles ensure a sturdy grip & provide extra comfort

RPTK CAPACITY - PLAIN STEEL						RPTK CAPACITY - 304 STAINLESS STEEL						HPTK CAPACITY - PLAIN STEEL						HPTK CAPACITY - 304 STAINLESS STEEL										
	20	18	16	14	12	10		20	18	16	14	12	10		20	18	16	14	12	10		20	18	16	14	12	10	
7/8"							7/8"							7/8"								7/8"						
1-1/8"							1-1/8"							1-1/8"								1-1/8"						
1-3/8"							1-3/8"							1-3/8"								1-3/8"						
1-3/4"							1-3/4"							1-3/4"								1-3/4"						
2"							2"							2"								2"						
2-1/2"							2-1/2"							2-1/2"								2-1/2"						
3"							3"							3"								3"						
3-1/2"							3-1/2"							3-1/2"								3-1/2"						
4"							4"							4"								4"						
4-1/2"							4-1/2"							4-1/2"								4-1/2"						

### CUPS AND DIES

L.H. Dottie's unique cup and die sets feature a three cutting point design which allows slugs to be removed with ease and prevents them from binding in the cup

Cups and dies are Laser etched with part numbers and conduit sizes



### TIP-BITS™

Tip-Bits are the only step drill bits available with a replaceable tip

Constructed of M2 high Speed Steel coated with Titanium and Cobalt

Triple cutting flute design tip cuts smoother, faster, and cooler



## CUPS AND DIES

PC 6410

Our unique cup and die sets feature a three cutting point design. With this feature no slug will ever hang up in the cup and splitting it is not required, the slug will simply fall out of the cup. Each cup and die is laser etched with part number and conduit size. Each cup also has laser etched centering lines for easy layout on panels and boxes.

### CUPS

CAT. NO.	UPC	DESCRIPTION	STD	MSTR	WT/STD
HPC78	82010	7/8" Cup (1/2" Conduit)	1		0.25#
HPC118	82013	1 1/8" Cup (3/4" Conduit)	1		0.35#
HPC134	82019	1 3/4" Cup (1 1/4" Conduit)	1		0.45#
HPC138	82016	1 3/8" Cup (1" Conduit)	1		0.65#
HPC1732	82178	1-7/32" Cup (Hole Lock)	1		0.40#
HPC200	82022	2" Cup (1 1/2" Conduit)	1		0.80#
HPC212	82025	2 1/2" Cup (2" Conduit)	1		1.30#
HPC300	82028	3" Cup (2 1/2" Conduit)	1		1.55#
HPC312	82031	3 1/2" Cup (3" Conduit)	1		2.10#
HPC400	82034	4" Cup (3 1/2" Conduit)	1		2.65#
HPC412	82037	4 1/2" Cup (4" Conduit)	1		3.45#

### DIES

HPD78	82009	7/8" Die (1/2" Conduit)	1		0.10#
HPD118	82012	1 1/8" Die (3/4" Conduit)	1		0.10#
HPD134	82018	1 3/4" Die (1 1/4" Conduit)	1		0.40#
HPD138	82015	1 3/8" Die (1" Conduit)	1		0.25#
HPD1732	82179	1-7/32" Die (Hole Lock)	1		0.20#
HPD200	82021	2" Die (1 1/2" Conduit)	1		0.65#
HPD212	82024	2 1/2" Die (2" Conduit)	1		1.20#
HPD300	82027	3" Die (2 1/2" Conduit)	1		1.60#
HPD312	82030	3 1/2" Die (3" Conduit)	1		2.35#
HPD400	82033	4" Die (3 1/2" Conduit)	1		2.85#
HPD412	82036	4 1/2" Die (4" Conduit)	1		3.30#

### CUP & DIE SETS

HPS78	82008	7/8" Set (1/2" Conduit)	1		0.10#
HPS118	82011	1 1/8" Set (3/4" Conduit)	1		0.10#
HPS134	82017	1 3/4" Set (1 1/4" Conduit)	1		0.40#
HPS138	82015	1 3/8" Set (1" Conduit)	1		0.25#
HPS1732	82177	1-7/32" Set (Hole Lock)	1		0.20#
HPS200	82020	2" Set (1 1/2" Conduit)	1		0.65#
HPS212	82023	2 1/2" Set (2" Conduit)	1		1.20#
HPS300	82026	3" Set (2 1/2" Conduit)	1		1.60#
HPS312	82029	3 1/2" Set (3" Conduit)	1		2.35#
HPS400	82033	4" Set (3 1/2" Conduit)	1		2.85#
HPS412	82035	4 1/2" Set (4" Conduit)	1		3.30#
HPS512	82170	5-1/2" Set (5" Conduit)	1		3.30#
HPS612	82171	6 1/2" Set (6" Conduit)	1		3.30#



### Features:

- The Finest High Speed Steel (HSS) is Used in Dottie Cups & Dies
- Unique 3 Point Design and Careful Machining Produces Long Lasting Cup & Die Sets
- Laser Etched Identification & Location Alignment Markings Make Dottie Cups and Dies Easy to Use on Any Job
- Interchangeable Cups & Dies

TOOLS & SPECIALTY ITEMS

## ACCESSORIES

PC 6410

### HYDRAULIC ACCESSORIES

CAT. NO.	UPC	DESCRIPTION	STD	MSTR	WT/STD
HPSDS38	82038	Small Draw Stud (3/8")	1		0.25#
HPLDS75	82039	Large Draw Stud (3/4")	1		0.35#
HPLDS100	82049	Large Draw Stud (1")	1		0.45#
HPS	82069	Hydraulic Punch Spacer	1		0.65#
HPTMKIT	82180	HPT Maintenance Repair Kit - 12 Ton	1		0.40#

### RATCHETING ACCESSORIES

RPBBD38	85584	3/8" Ball Bearing Draw Stud	1		0.50#
RPBBD34	85585	3/4" Ball Bearing Draw Stud	1		0.95#





## HYDRAULIC AND RATCHETING PUNCH KITS

PC 6410

Dottie's state of the art Punch Kits are compact yet extremely powerful. We offer both Hydraulic and Ratcheting Punch Tools. The Hydraulic Punch has a 360 degree fully articulating 12-Ton rated Aluminum Head. The 12-Ton articulating head allows users to punch holes in any position. The recently launched Ratcheting Punch Tool is the only model available with the capability to punch up to 16 gauge stainless steel. Both the Hydraulic and Ratcheting Punch kits come with interchangeable cups and dies that feature our innovative 3 point design which ensures a clean cut every time. Each kit is packed in an ultra heavy-duty carrying case with industrial strength latches.



### RPTK - 10 PIECE KIT FOR 1/2" TO 2" CONDUIT

**Kit Includes:**

- 1pc. 1" Hex Ratcheting Wrench
- 6pc. Die Sets: Sizes - 7/8", 1-1/8", 1-3/8", 1-3/4", 2", 2-1/2"
- 2pc. Draw Studs/Collar: Sizes - 3/8", 3/4"
- 1pc. Tip-Bits™ Steps Drills: Size - 1-1/8"
- Ultra Heavy-Duty Carrying Case

CAT. NO.	UPC	DESCRIPTION	STD	MSTR	WT/STD
RPTK	85583	1/2" to 2" Conduit (10pc kit)	1		9.80#



### HPTK1 - 13 PIECE KIT FOR 1/2" TO 2 1/2" CONDUIT

**Kit Includes:**

- 1pc. 12 Ton Hydraulic Punch with Fully Articulating Head
- 7pc. Die Sets: Sizes - 7/8", 1-1/8", 1-3/8", 1-3/4", 2", 2-1/2", 3"
- 2pc. Draw Studs/Collar: Sizes - 3/8", 3/4"
- 2pc. Tip-Bits™ Steps Drills: Size - 1-1/8", 7/8"
- 1pc. 1/2" Die Spacer
- Ultra Heavy-Duty Carrying Case

CAT. NO.	UPC	DESCRIPTION	STD	MSTR	WT/STD
HPTK1	82044	1/2" to 2 1/2" Conduit (13pc kit)	1		21.65#



### HPTK2 - 16 PIECE KIT FOR 1/2" TO 4" CONDUIT

**Kit Includes:**

- 1pc. 12 Ton Hydraulic Punch with Fully Articulating Head
- 10pc. Die Sets: Sizes - 7/8", 1-1/8", 1-3/8", 1-3/4", 2", 2-1/2", 3", 3-1/2", 4", 4-1/2"
- 2pc. Draw Studs/Collar: Sizes - 3/8", 3/4"
- 2pc. Tip-Bits™ Steps Drills: Size - 1-1/8", 7/8"
- 1pc. 1/2" Die Spacer
- Ultra Heavy-Duty Carrying Case

CAT. NO.	UPC	DESCRIPTION	STD	MSTR	WT/STD
HPTK2	82045	1/2" to 4" Conduit (16pc kit)	1		40.00#



### HPTK3 - 3 PIECE DIE KIT FOR 3", 3-1/2" & 4" CONDUIT

**Kit Includes:**

- 3pc. Die Sets: Sizes - 3-1/2", 4", and 4-1/2"
- Ultra Heavy-Duty Carrying Case

CAT. NO.	UPC	DESCRIPTION	STD	MSTR	WT/STD
HPTK3	82043	3" to 4" Conduit (3pc Kit)	1		18.85#

#LPUNCH  
©2018 L.H. Dottie Co.





# HYDRAULIC & RATCHETING PUNCH KITS





# PUNCH KITS

## PUNCH KITS

### FEATURES & BENEFITS

- Great for steel, stainless steel, aluminum, plastic, and fiberglass
- Laser etched markings on cups and dies
- 3 point die design – eliminates slug from binding in cup - They just fall out of the cup
- Our Interchangeable cups and dies work with competing brands of tools
- Tools require 50% less torque than competing brands of tools
- Cushioned handle ensures a sturdy grip and provides extra comfort
- Ultra heavy-duty carrying case



### RATCHETING PUNCH TOOL - RPTK

**NEW**



### HYDRAULIC PUNCH TOOL - HPTK

Laser etched marking on articulating head provides alignment for easy storage of tool in carrying case

Tool features fully articulating head- 360° capability



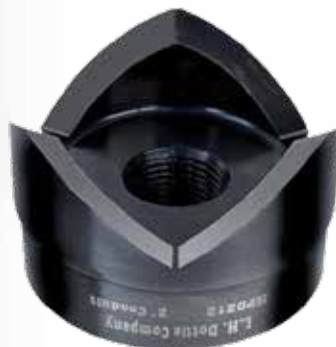
Cushioned handles ensure a sturdy grip & provide extra comfort

RPTK CAPACITY - PLAIN STEEL						RPTK CAPACITY - 304 STAINLESS STEEL						HPTK CAPACITY - PLAIN STEEL						HPTK CAPACITY - 304 STAINLESS STEEL										
	20	18	16	14	12	10		20	18	16	14	12	10		20	18	16	14	12	10		20	18	16	14	12	10	
7/8"							7/8"							7/8"								7/8"						
1-1/8"							1-1/8"							1-1/8"								1-1/8"						
1-3/8"							1-3/8"							1-3/8"								1-3/8"						
1-3/4"							1-3/4"							1-3/4"								1-3/4"						
2"							2"							2"								2"						
2-1/2"							2-1/2"							2-1/2"								2-1/2"						
3"							3"							3"								3"						
3-1/2"							3-1/2"							3-1/2"								3-1/2"						
4"							4"							4"								4"						
4-1/2"							4-1/2"							4-1/2"								4-1/2"						

### CUPS AND DIES

L.H. Dottie's unique cup and die sets feature a three cutting point design which allows slugs to be removed with ease and prevents them from binding in the cup

Cups and dies are Laser etched with part numbers and conduit sizes



### TIP-BITS™

Tip-Bits are the only step drill bits available with a replaceable tip

Constructed of M2 high Speed Steel coated with Titanium and Cobalt

Triple cutting flute design tip cuts smoother, faster, and cooler



## CUPS AND DIES

PC 6410

Our unique cup and die sets feature a three cutting point design. With this feature no slug will ever hang up in the cup and splitting it is not required, the slug will simply fall out of the cup. Each cup and die is laser etched with part number and conduit size. Each cup also has laser etched centering lines for easy layout on panels and boxes.

### CUPS

CAT. NO.	UPC	DESCRIPTION	STD	MSTR	WT/STD
HPC78	82010	7/8" Cup (1/2" Conduit)	1		0.25#
HPC118	82013	1 1/8" Cup (3/4" Conduit)	1		0.35#
HPC134	82019	1 3/4" Cup (1 1/4" Conduit)	1		0.45#
HPC138	82016	1 3/8" Cup (1" Conduit)	1		0.65#
HPC1732	82178	1-7/32" Cup (Hole Lock)	1		0.40#
HPC200	82022	2" Cup (1 1/2" Conduit)	1		0.80#
HPC212	82025	2 1/2" Cup (2" Conduit)	1		1.30#
HPC300	82028	3" Cup (2 1/2" Conduit)	1		1.55#
HPC312	82031	3 1/2" Cup (3" Conduit)	1		2.10#
HPC400	82034	4" Cup (3 1/2" Conduit)	1		2.65#
HPC412	82037	4 1/2" Cup (4" Conduit)	1		3.45#

### DIES

HPD78	82009	7/8" Die (1/2" Conduit)	1		0.10#
HPD118	82012	1 1/8" Die (3/4" Conduit)	1		0.10#
HPD134	82018	1 3/4" Die (1 1/4" Conduit)	1		0.40#
HPD138	82015	1 3/8" Die (1" Conduit)	1		0.25#
HPD1732	82179	1-7/32" Die (Hole Lock)	1		0.20#
HPD200	82021	2" Die (1 1/2" Conduit)	1		0.65#
HPD212	82024	2 1/2" Die (2" Conduit)	1		1.20#
HPD300	82027	3" Die (2 1/2" Conduit)	1		1.60#
HPD312	82030	3 1/2" Die (3" Conduit)	1		2.35#
HPD400	82033	4" Die (3 1/2" Conduit)	1		2.85#
HPD412	82036	4 1/2" Die (4" Conduit)	1		3.30#

### CUP & DIE SETS

HPS78	82008	7/8" Set (1/2" Conduit)	1		0.10#
HPS118	82011	1 1/8" Set (3/4" Conduit)	1		0.10#
HPS134	82017	1 3/4" Set (1 1/4" Conduit)	1		0.40#
HPS138	82015	1 3/8" Set (1" Conduit)	1		0.25#
HPS1732	82177	1-7/32" Set (Hole Lock)	1		0.20#
HPS200	82020	2" Set (1 1/2" Conduit)	1		0.65#
HPS212	82023	2 1/2" Set (2" Conduit)	1		1.20#
HPS300	82026	3" Set (2 1/2" Conduit)	1		1.60#
HPS312	82029	3 1/2" Set (3" Conduit)	1		2.35#
HPS400	82033	4" Set (3 1/2" Conduit)	1		2.85#
HPS412	82035	4 1/2" Set (4" Conduit)	1		3.30#
HPS512	82170	5-1/2" Set (5" Conduit)	1		3.30#
HPS612	82171	6 1/2" Set (6" Conduit)	1		3.30#



### Features:

- The Finest High Speed Steel (HSS) is Used in Dottie Cups & Dies
- Unique 3 Point Design and Careful Machining Produces Long Lasting Cup & Die Sets
- Laser Etched Identification & Location Alignment Markings Make Dottie Cups and Dies Easy to Use on Any Job
- Interchangeable Cups & Dies

TOOLS & SPECIALTY ITEMS

## ACCESSORIES

PC 6410

### HYDRAULIC ACCESSORIES

CAT. NO.	UPC	DESCRIPTION	STD	MSTR	WT/STD
HPSDS38	82038	Small Draw Stud (3/8")	1		0.25#
HPLDS75	82039	Large Draw Stud (3/4")	1		0.35#
HPLDS100	82049	Large Draw Stud (1")	1		0.45#
HPS	82069	Hydraulic Punch Spacer	1		0.65#
HPTMKIT	82180	HPT Maintenance Repair Kit - 12 Ton	1		0.40#

### RATCHETING ACCESSORIES

RPBBD38	85584	3/8" Ball Bearing Draw Stud	1		0.50#
RPBBD34	85585	3/4" Ball Bearing Draw Stud	1		0.95#





## HYDRAULIC AND RATCHETING PUNCH KITS

PC 6410

Dottie's state of the art Punch Kits are compact yet extremely powerful. We offer both Hydraulic and Ratcheting Punch Tools. The Hydraulic Punch has a 360 degree fully articulating 12-Ton rated Aluminum Head. The 12-Ton articulating head allows users to punch holes in any position. The recently launched Ratcheting Punch Tool is the only model available with the capability to punch up to 16 gauge stainless steel. Both the Hydraulic and Ratcheting Punch kits come with interchangeable cups and dies that feature our innovative 3 point design which ensures a clean cut every time. Each kit is packed in an ultra heavy-duty carrying case with industrial strength latches.



### RPTK - 10 PIECE KIT FOR 1/2" TO 2" CONDUIT

**Kit Includes:**

- 1pc. 1" Hex Ratcheting Wrench
- 6pc. Die Sets: Sizes - 7/8", 1-1/8", 1-3/8", 1-3/4", 2", 2-1/2"
- 2pc. Draw Studs/Collar: Sizes - 3/8", 3/4"
- 1pc. Tip-Bits™ Steps Drills: Size - 1-1/8"
- Ultra Heavy-Duty Carrying Case

CAT. NO.	UPC	DESCRIPTION	STD	MSTR	WT/STD
RPTK	85583	1/2" to 2" Conduit (10pc kit)	1		9.80#



### HPTK1 - 13 PIECE KIT FOR 1/2" TO 2 1/2" CONDUIT

**Kit Includes:**

- 1pc. 12 Ton Hydraulic Punch with Fully Articulating Head
- 7pc. Die Sets: Sizes - 7/8", 1-1/8", 1-3/8", 1-3/4", 2", 2-1/2", 3"
- 2pc. Draw Studs/Collar: Sizes - 3/8", 3/4"
- 2pc. Tip-Bits™ Steps Drills: Size - 1-1/8", 7/8"
- 1pc. 1/2" Die Spacer
- Ultra Heavy-Duty Carrying Case

CAT. NO.	UPC	DESCRIPTION	STD	MSTR	WT/STD
HPTK1	82044	1/2" to 2 1/2" Conduit (13pc kit)	1		21.65#



### HPTK2 - 16 PIECE KIT FOR 1/2" TO 4" CONDUIT

**Kit Includes:**

- 1pc. 12 Ton Hydraulic Punch with Fully Articulating Head
- 10pc. Die Sets: Sizes - 7/8", 1-1/8", 1-3/8", 1-3/4", 2", 2-1/2", 3", 3-1/2", 4", 4-1/2"
- 2pc. Draw Studs/Collar: Sizes - 3/8", 3/4"
- 2pc. Tip-Bits™ Steps Drills: Size - 1-1/8", 7/8"
- 1pc. 1/2" Die Spacer
- Ultra Heavy-Duty Carrying Case

CAT. NO.	UPC	DESCRIPTION	STD	MSTR	WT/STD
HPTK2	82045	1/2" to 4" Conduit (16pc kit)	1		40.00#



### HPTK3 - 3 PIECE DIE KIT FOR 3", 3-1/2" & 4" CONDUIT

**Kit Includes:**

- 3pc. Die Sets: Sizes - 3-1/2", 4", and 4-1/2"
- Ultra Heavy-Duty Carrying Case

CAT. NO.	UPC	DESCRIPTION	STD	MSTR	WT/STD
HPTK3	82043	3" to 4" Conduit (3pc Kit)	1		18.85#

#LPUNCH  
©2018 L.H. Dottie Co.



TOOLS & SPECIALTY ITEMS