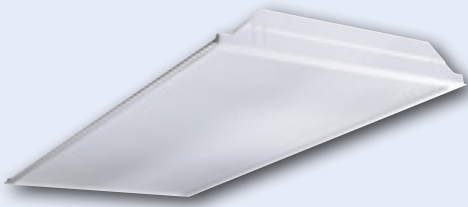


JT8

Dedicated T8 Lensed Troffer

LENSED TROFFERS



FEATURES

- Optimized for T8 lamps
- Recessed, surface, or cable mount
- Flush steel door (standard) hinges from either side for maximum flexibility
- Mitered corners standard
- Hemmed edges on 2' x 4' for contractor-friendly handling
- Mechanical light trap prevents light leak without foam gasketing
- Integral T-Bar clips (2' x 4' only)
- Housing reinforced with embossments
- Painted parts are treated with a five stage phosphate bonding process and finished with a backed white enamel
- UL listed 1598, cUL or CSA. Damp Location standard
- Available with exclusive wiHUBB technology preinstalled

ORDERING INFORMATION

JT8								
MODEL	NO. OF LAMPS	CEILING TYPE	SHIELDING	VOLTAGE	OPTIONS			
JT8 Dedicated T8 Lensed Troffer	2 Two 3 Three 4 Four (2 x 4 only) See Product Availability table below.	G Inverted T-Bar ¹ SM Surface Mount CM Cable Mount ²	A12 Pattern 12 Acrylic Lens (Std.) A12125 Pattern 12 Acrylic Lens, 0.125" Nominal A19 Pattern 19 Acrylic Lens, 0.156" Nominal PC1 ½" x ½" x ½" Specular Silver Polystyrene Louver For more shielding options see page 40.	U 120V-277V 347 347V	F835 35K 78+CRI T8 Lamps Installed F841 41K 78+CRI T8 Lamps Installed F0835 35K 82CRI T8 Lamps Installed F0841 41K 82 CRI T8 Lamps Installed EL Emergency Battery Pack Installed ³ GLR Fast Blow Fuse MS9 Master/Satellite w/9' Harness C388 3-Wire Flex C488 4-Wire Flex PAF Paint After Fabrication M4R Specular Reflector WIH wiHUBB Enabled ^{4,5} EOR End of Row (SM/CM only) ^{6,7} INT Intermediate (SM/CM only) ^{6,7} CP Chicago Plenum For more options see Technical section.			
SIZE	LAMP TYPE	DOOR	BALLAST					
22 2' x 2'	17 2', T8: 17 Watt (2, 3, or 4 lamps) 31U1 U-Bent, 1½" Leg Spacing T8: 31 Watt (2 or 3 lamps) 32 4', T8: 32, 30, 28 or 25 Watt 32U6 U-Bent, 6" Leg Spacing T8: 32 Watt (2 lamps) 40TT Twin Tube Compact, 2G11 Base: 40 Watt (2 or 3 lamps)	FS White Flush Steel FA White Flush Aluminum For more door options contact factory.	NOTE: See Technical Section for other ballast options. E Electronic T8, Instant Start 3E 3-Lamp Electronic T8, Instant Start 4E 4-Lamp Electronic T8, Instant Start (17W lamps only) 24E (1) 2-Lamp & (1) 4-Lamp Electronic T8, Instant Start (For use with MS9) EP Electronic T8, Programmed Start 3EP 3-Lamp Electronic T8, Programmed Start 4EP 4-Lamp Electronic T8, Programmed Start ELW 2-Lamp Electronic T8, 0.77 Ballast Factor, Low Wattage, Instant Start 3ELW 3-Lamp Electronic T8, 0.77 Ballast Factor, Low Wattage, Instant Start 4ELW 4-Lamp Electronic T8, 0.77 Ballast Factor, Low Wattage, Instant Start EPTT Electronic Twin Tube, Programmed Start					
ACCESSORIES (ORDER SEPARATELY)								
FK22 2'x2' Single Flange Kit								
FK24 2'x4' Single Flange Kit								
FKCR Flange Kit Row Adaptor (All Sizes)								
CM48Y2SC3F-KIT 48" Cable Mount Kit for 2' wide CM ceiling type, 3 Wire Feed Cord								

¹ For drywall, order flange kit accessories separately.

² Order hanger accessories separately.

³ 3-lamp 2x2 fixture utilizes 2 ballast compartments and can mount any standard battery pack. 2 and 4-lamp fixtures can only mount one ballast and one 9" long or shorter battery pack. All other battery packs must be externally mounted.

⁴ In-Fixture Module Antenna adds 2" to overall fixture height at power feed location.

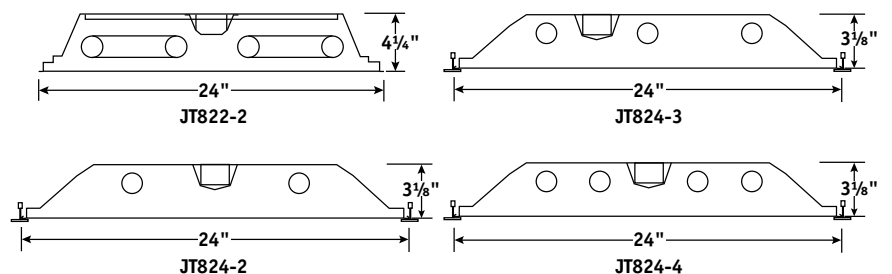
⁵ Not available with Surface Mount ceiling types.

⁶ Provides ends with wiring access for continuous row mounting.

⁷ Contact Hubbell representative for continuous row, 3-lamp fixtures.

PRODUCT AVAILABILITY

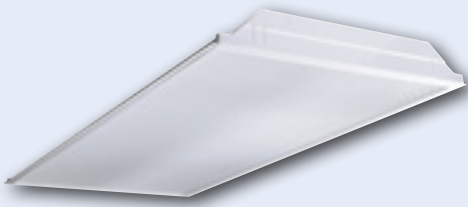
SIZE	NO. OF LAMPS	LAMP TYPE	GRID TRIM HEIGHT	SM TRIM HEIGHT
2' x 2'	2	17, 31U1, 32U6, 40TT	4¼"	4⅝"
	3	17, 31U1, 40TT	4¼"	4⅝"
	4	17	4¼"	4⅝"
2' x 4'	2	32	3⅝"	3¾"
	3	32	3⅝"	3¾"
	4	32	3⅝"	3¾"



JT8

Dedicated T8 Lensed Troffer

LENSED TROFFERS



FEATURES

- Optimized for T8 lamps
- Recessed, surface, or cable mount
- Flush steel door (standard) hinges from either side for maximum flexibility
- Mitered corners standard
- Hemmed edges on 2' x 4' for contractor-friendly handling
- Mechanical light trap prevents light leak without foam gasketing
- Integral T-Bar clips (2' x 4' only)
- Housing reinforced with embossments
- Painted parts are treated with a five stage phosphate bonding process and finished with a backed white enamel
- UL listed 1598, cUL or CSA. Damp Location standard
- Available with exclusive wiHUBB technology preinstalled

ORDERING INFORMATION

JT8	-		-		-		-	
MODEL	NO. OF LAMPS	CEILING TYPE	SHIELDING	VOLTAGE	OPTIONS			
JT8 Dedicated T8 Lensed Troffer	2 Two 3 Three 4 Four (2 x 4 only) See Product Availability table below.	G Inverted T-Bar ¹ SM Surface Mount CM Cable Mount ²	A12 Pattern 12 Acrylic Lens (Std.) A12125 Pattern 12 Acrylic Lens, 0.125" Nominal A19 Pattern 19 Acrylic Lens, 0.156" Nominal PC1 ½" x ½" x ½" Specular Silver Polystyrene Louver For more shielding options see page 40.	U 120V-277V 347 347V	F835 35K 78+CRI T8 Lamps Installed F841 41K 78+CRI T8 Lamps Installed F0835 35K 82CRI T8 Lamps Installed F0841 41K 82 CRI T8 Lamps Installed EL Emergency Battery Pack Installed ³ GLR Fast Blow Fuse MS9 Master/Satellite w/9' Harness C388 3-Wire Flex C488 4-Wire Flex PAF Paint After Fabrication M4R Specular Reflector WIH wiHUBB Enabled ^{4,5} EOR End of Row (SM/CM only) ^{6,7} INT Intermediate (SM/CM only) ^{6,7} CP Chicago Plenum For more options see Technical section.			
SIZE	LAMP TYPE	DOOR	BALLAST					
22 2' x 2'	17 2', T8: 17 Watt (2, 3, or 4 lamps) 31U1 U-Bent, 1½" Leg Spacing T8: 31 Watt (2 or 3 lamps) 32 4', T8: 32, 30, 28 or 25 Watt 32U6 U-Bent, 6" Leg Spacing T8: 32 Watt (2 lamps) 40TT Twin Tube Compact, 2G11 Base: 40 Watt (2 or 3 lamps)	FS White Flush Steel FA White Flush Aluminum For more door options contact factory.	NOTE: See Technical Section for other ballast options. E Electronic T8, Instant Start 3E 3-Lamp Electronic T8, Instant Start 4E 4-Lamp Electronic T8, Instant Start (17W lamps only) 24E (1) 2-Lamp & (1) 4-Lamp Electronic T8, Instant Start (For use with MS9) EP Electronic T8, Programmed Start 3EP 3-Lamp Electronic T8, Programmed Start 4EP 4-Lamp Electronic T8, Programmed Start ELW 2-Lamp Electronic T8, 0.77 Ballast Factor, Low Wattage, Instant Start 3ELW 3-Lamp Electronic T8, 0.77 Ballast Factor, Low Wattage, Instant Start 4ELW 4-Lamp Electronic T8, 0.77 Ballast Factor, Low Wattage, Instant Start EPTT Electronic Twin Tube, Programmed Start					
ACCESSORIES (ORDER SEPARATELY)								
FK22 2'x2' Single Flange Kit								
FK24 2'x4' Single Flange Kit								
FKCR Flange Kit Row Adaptor (All Sizes)								
CM48Y2SC3F-KIT 48" Cable Mount Kit for 2' wide CM ceiling type, 3 Wire Feed Cord								

¹ For drywall, order flange kit accessories separately.

² Order hanger accessories separately.

³ 3-lamp 2x2 fixture utilizes 2 ballast compartments and can mount any standard battery pack. 2 and 4-lamp fixtures can only mount one ballast and one 9" long or shorter battery pack. All other battery packs must be externally mounted.

⁴ In-Fixture Module Antenna adds 2" to overall fixture height at power feed location.

⁵ Not available with Surface Mount ceiling types.

⁶ Provides ends with wiring access for continuous row mounting.

⁷ Contact Hubbell representative for continuous row, 3-lamp fixtures.

PRODUCT AVAILABILITY

SIZE	NO. OF LAMPS	LAMP TYPE	GRID TRIM HEIGHT	SM TRIM HEIGHT
2' x 2'	2	17, 31U1, 32U6, 40TT	4¼"	4⅝"
	3	17, 31U1, 40TT	4¼"	4⅝"
	4	17	4¼"	4⅝"
2' x 4'	2	32	3⅝"	3¾"
	3	32	3⅝"	3¾"
	4	32	3⅝"	3¾"

