

Form 85™ Unilets™ Conduit Outlet Bodies, Covers and Gaskets

For use with Rigid Steel, Rigid Aluminum, IMC, and EMT Conduit.

NEC/CEC — Suitable for use in the following
Hazardous Locations:
Class I, Division 2 per NEC 501.10(B)(4)

Applications

- Serve as pulling fittings.
- Make bends in conduit system.
- Provide openings for splicing.
- Connect and change direction of conduit runs.
- Allow connections for branch runs.
- Permit access to conductors for maintenance.

Features

- Roomy interiors: more wiring space.
- Smooth, rounded integral bushings in hubs protect conductor insulation.
- Accurately tapped, tapered threads for tight, rigid joints and excellent ground continuity.
- Form 85 copperfree aluminum Unilets™ are lightweight, self-oxidizing, self-renewing and offer a high corrosion resistance.
- Lightweight aluminum facilitates shipping, handling and installing.
- Sizes with flat-back design ideal where fitting is mounted flat against surface.
- 1/2" to 3" blank covers are domed for extra wiring space.

Standard Materials

- Bodies: copperfree (max. 4/10 of 1%) aluminum
 - 1/2" thru 2": pressure cast
 - 2-1/2" thru 4": sand cast
- Blank covers: malleable iron, steel or copperfree (max. 4/10 of 1%) aluminum
- Cover screws: stainless steel
- Gaskets: neoprene or composition fiber

Standard Finishes

- Aluminum bodies: epoxy powder coat
- Stamped aluminum covers: natural finish
- Cast aluminum covers: epoxy powder coat

Options

- PVC coating available on all threaded bodies and select covers.
Add suffix **-PVC** to catalog number.

NEC/CEC Certifications and Compliances

- UL Standards: 514A, 514B
- UL Listed: E2527
- CSA Standard: C22.2 No. 18.3
- CSA Certified: 065183
- NEMA Standard: FB-1

Related Products

- For explosionproof conduit outlet bodies and boxes, see *Enclosures and Junction Boxes in Protection and Control of Electrical Apparatus and Circuits Catalog*.



Conduit Body with Stamped Aluminum Cover. 2" Type C shown.





Typical Form 85 Conduit Bodies with Setscrews.
For use with Electrical Metallic Tubing (EMT).



Form 85™ Unilets™ Conduit Outlet Bodies, Covers and Gaskets

Threaded Type for use with Rigid Metal Conduit and IMC; Setscrew Type for use with Electrical Metallic Tubing (EMT).

NEC/CEC — Suitable for use in the following
Hazardous Locations:
Class I, Division 2 per NEC 501.10(B)(4)

Appleton™ Form 85™ Conduit Bodies: Threaded/SetScrew Type ①

| Hub Size (Inches) | Max. Wire Fill | C | | Max. Wire Fill | E | |
|----------------------|----------------|---|------------------|---|------------------|------------------|
| | | Threaded Type | Setscrew Type | | Threaded Type | Setscrew Type |
| | |  | |  | | |
| 1/2 | ② | C-50A | C-50TA | ② | E-50A | E-50TA |
| 3/4 | (3) # 6 | C-75A | C-75TA | (3) # 6 | E-75A | — |
| 1 | (3) # 4 | C-100A | C-100TA | (3) #6 | E-100A | — |
| 1-1/4 | (3) # 2 | C-125A | C-125TA | — | — | — |
| 1-1/2 | (3) # 1/0 | C-150A | C-150TA | — | — | — |
| 2 | (3) # 3/0 | C-200A | — | — | — | — |
| 2-1/2 | (3) 300 | C-250A | — | — | — | — |
| 3 | (3) 300 | C-300A | — | — | — | — |
| 3-1/2 | (3) 350 | C-350A | — | — | — | — |
| 4 | (3) 350 | C-400A | — | — | — | — |

| Hub Size (Inches) | Max. Wire Fill | LR | | Max. Wire Fill | T | |
|----------------------|----------------|---|------------------|---|------------------|------------------|
| | | Threaded Type | Setscrew Type | | Threaded Type | Setscrew Type |
| | |  | |  | | |
| 1/2 | ② | LR-50A | LR-50TA | ② | T-50A | T-50TA |
| 3/4 | (3) # 6 | LR-75A | LR-75TA | (3) # 6 | T-75A | T-75TA |
| 1 | (3) # 4 | LR-100A | LR-100TA | (3) # 4 | T-100A | T-100TA |
| 1-1/4 | (3) # 2 | LR-125A | LR-125TA | (3) # 2 | T-125A | — |
| 1-1/2 | (3) # 1 | LR-150A | LR-150TA | (3) # 1 | T-150A | — |
| 2 | (3) # 2/0 | LR-200A | LR-200TA | (3) # 2/0 | T-200A | — |
| 2-1/2 | (3) 300 | LR-250A | — | (3) 300 | T-250A | — |
| 3 | (3) 350 | LR-300A | — | (3) 300 | T-300A | — |
| 3-1/2 | (3) 350 | LR-350A | — | (3) 350 | T-350A | — |
| 4 | (3) 350 | LR-400A | — | (3) 350 | T-400A | — |

① Refer to following page for Wiring Capacity Table.



② All 1/2" Max Wire Fill Calculations per the NEC - Annex C - Table C8.



Form 85™ Unilets™ Conduit Outlet Bodies, Covers and Gaskets

Threaded Type for use with Rigid Metal Conduit and IMC; Setscrew Type for use with Electrical Metallic Tubing (EMT).

NEC/CEC — Suitable for use in the following
Hazardous Locations:
Class I, Division 2 per NEC 501.10(B)(4)

Appleton™ Form 85™ Conduit Bodies: Threaded/SetScrew Type ①

| Hub Size (Inches) | Max. Wire Fill | LB | | Max. Wire Fill | LL | |
|----------------------|----------------|---|------------------|----------------|---|------------------|
| | | Threaded Type | Setscrew Type | | Threaded Type | Setscrew Type |
| | |  | | |  | |
| 1/2 | ② | LB-50A | LB-50TA | ② | LL-50A | LL-50TA |
| 3/4 | (3) # 6 | LB-75A | LB-75TA | (3) # 6 | LL-75A | LL-75TA |
| 1 | (3) # 4 | LB-100A | LB-100TA | (3) # 4 | LL-100A | LL-100TA |
| 1-1/4 | (3) # 2 | LB-125A | LB-125TA | (3) # 2 | LL-125A | LL-125TA |
| 1-1/2 | (3) # 1/0 | LB-150A | LB-150TA | (3) # 1 | LL-150A | LL-150TA |
| 2 | (3) # 4/0 | LB-200A | LB-200TA | (3) # 2/0 | LL-200A | LL-200TA |
| 2-1/2 | (3) 300 | LB-250A | — | (3) 300 | LL-250A | — |
| 3 | (3) 400 | LB-300A | — | (3) 350 | LL-300A | — |
| 3-1/2 | (3) 500 | LB-350A | — | (3) 350 | LL-350A | — |
| 4 | (3) 500 | LB-400A | — | (3) 350 | LL-400A | — |

| Hub Size (Inches) | Max. Wire Fill | TB | | Max. Wire Fill | X | |
|----------------------|----------------|---|------------------|----------------|---|------------------|
| | | Threaded Type | Setscrew Type | | Threaded Type | Setscrew Type |
| | |  | | |  | |
| 1/2 | ② | TB-50A | — | ② | X-50A | — |
| 3/4 | (3) # 6 | TB-75A | — | (3) # 6 | X-75A | — |
| 1 | (3) # 6 | TB-100A | — | (3) # 4 | X-100A | — |
| 1-1/4 | (3) # 6 | TB-125A | — | — | — | — |
| 1-1/2 | (3) # 4 | TB-150A | — | — | — | — |
| 2 | (3) # 1/0 | TB-200A | — | — | — | — |
| 2-1/2 | — | — | — | — | — | — |
| 3 | — | — | — | — | — | — |
| 3-1/2 | — | — | — | — | — | — |
| 4 | — | — | — | — | — | — |

Back Style for Form 85 Unilet Conduit Body Sizes (Inches)

| Unilet Body | Flat Back | Round Back |
|------------------|--------------|----------------|
| C, LB, LL, LR, T | 1/2 – 2 | 2-1/2 – 4 |
| TB | 1-1/4, 1-1/2 | 1/2, 3/4, 1, 2 |
| E, X | 1/2 – 1 | — |

① Refer to following page for Wiring Capacity Table.







② All 1/2" Max Wire Fill Calculations per the NEC - Annex C - Table C8.

Form 85™ Unilets™ Conduit Outlet Bodies, Covers and Gaskets

Covers Furnished with Stainless Steel Fastening Screws.

NEC/CEC — Suitable for use in the following
Hazardous Locations:
Class I, Division 2 per NEC 501.10(B)(4)

Covers and Gaskets

| Body Size (Inches) | Blank Stamped Aluminum ① | Blank Cast Aluminum | Neoprene | Composition Fiber |
|--------------------|--|---|--|---|
| |  Domed: 1/2" – 3" |  Flat: 1/2" – 2" |  |  |
| |  Flat: 3-1/2" – 6" |  Domed: 2-1/2" – 4" | Tear out inner section to convert to "open type" gasket. | |
| 1/2 | K50-A | K50-CA | GK50-N | GK50-V |
| 3/4 | K75-A | K75-CA | GK75-N | GK75-V |
| 1 | K100-A | K100-CA | GK100-N | GK100-V |
| 1-1/4 | K125-150-A | K125-150-CA | GK125-150-N | GK125-150-V |
| 1-1/2 | K125-150-A | K125-150-CA | GK125-150-N | GK125-150-V |
| 2 | K200-A | K200-CA | GK200-N | GK200-V |
| 2-1/2 | K250-300-A | K250-300-CA | GK250-300-N | GK-250-300-V |
| 3 | K250-300-A | K250-300-CA | GK250-300-N | GK-250-300-V |
| 3-1/2 | K350-400-A | K350-400-CA | GK350-400-N | GK-350-400-V |
| 4 | K350-400-A | K350-400-CA | GK350-400-N | GK-350-400-V |

Wiring Capacity: Combine Body and Cover Capacities for Total Usable Capacity per NEC 314.16(A)

| Hub Size (Inches) | Capacity — dm ³ (in ³) | | | | | | | | | | |
|-------------------|---|-----------------|------------------|--------------------|-----|------------------|----|-----------------|-----------------|-----------------|-----------------|
| | C | E | LB | LL LR | LRL | T | TA | TB | X | Stamped Cover | Cast Cover |
| 1/2 | 0.07 (4.00) | 0.07 (4.00) | 0.07 (4.00) | 0.07 (4.00) | — | 0.07 (4.00) | — | 0.10 (6.00) | 0.07 (4.00) | 0.01 (0.50) | 0.00 (0.00) |
| 3/4 | 0.11 (7.00) | 0.11 (7.00) | 0.11 (7.00) | 0.11 (7.00) | — | 0.11 (7.00) | — | 0.11 (7.00) | 0.11 (7.00) | 0.01 (0.80) | 0.00 (0.30) |
| 1 | 0.19 (11.80) | 0.19 (11.80) | 0.19 (11.80) | 0.19 (11.80) | — | 0.19 (11.80) | — | 0.21 (13.00) | 0.19 (11.80) | 1.00 (25.4) | 0.01 (0.50) |
| 1-1/4 | 0.57 (34.80) | — | 0.57 (34.80) | 0.57 (34.80) | — | 0.57 (34.80) | — | 0.57 (35.00) | — | 0.04 (2.50) | 0.01 (0.80) |
| 1-1/2 | 0.57 (35.00) | — | 0.57 (35.00) | 0.57 (35.00) | — | 0.57 (35.00) | — | 0.57 (34.50) | — | 0.04 (2.50) | 0.01 (0.80) |
| 2 | 1.15 (70.00) | — | 1.15 (70.00) | 1.15 (70.00) | — | 1.15 (70.00) | — | 1.16 (71.00) | — | 0.11 (6.50) | 0.02 (1.00) |
| 2-1/2 | 2.34 (143.00) | — | 2.28 (139.00) | 3568.7 (140.50) | — | 2.39 (146.00) | — | — | — | 0.29 (18.00) | 0.49 (30.00) |
| 3 | 2.95 (180.00) | — | 2.90 (177.00) | 2.87 (175.00) | — | 3.03 (185.00) | — | — | — | 0.29 (18.00) | 0.49 (30.00) |
| 3-1/2 | 4.97 (303.00) | — | 4.92 (300.00) | 4.92 (300.00) | — | 5.15 (314.00) | — | — | — | — | 0.82 (50.00) |
| 4 | 5.57 (340.00) | — | 5.41 (330.00) | 5.41 (330.00) | — | 5.65 (345.00) | — | — | — | — | 0.82 (50.00) |

① Add suffix -PVC to catalog number.

Form 85™ Unilets™ Conduit Outlet Bodies, Covers and Gaskets

For Rigid Conduit & IMC.

NEC/CEC — Suitable for use in the following
Hazardous Locations:
Class I, Division 2 per NEC 501.10(B)(4)

Applications

- To provide access to conductors for pulling, splicing, maintenance and future changes/ upgrades.
- Allows connection of straight conduit runs, branch conduit runs and 90° bends.

Features

- Tapered threaded hubs (NPT).
- Packaged complete with cover and gasket under one Catalog Number.
- Ready to use.

Standard Materials

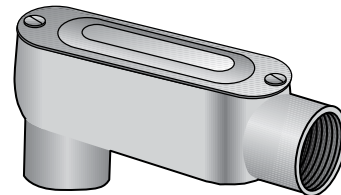
- Conduit Body: copperfree (max. 4/10 of 1%) aluminum
- Cover: **Type BS** copperfree (max. 4/10 of 1%) aluminum
- Gasket: **Type SGN** Neoprene

Standard Finishes

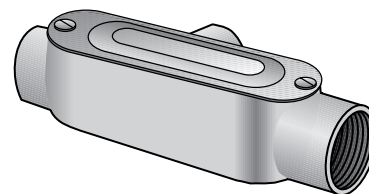
- Conduit Body - epoxy powder coat enamel

NEC/CEC Certifications and Compliances

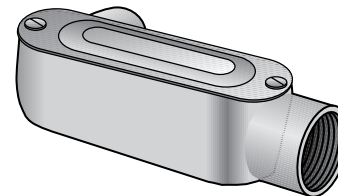
- UL Standards: 514A
- UL Listed: E-18095
- CSA Standard: C22.2 No. 18
- CSA Certified: LR-9795
- NEMA Standard: FB-1, FB-2.10



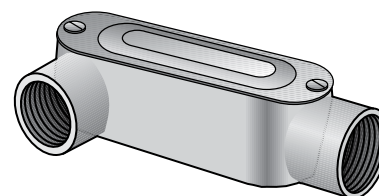
Type LB-ACGA



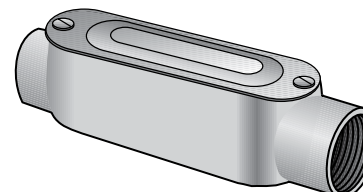
Type T-ACGA



Type LL-ACGA



Type LR-ACGA



Type C-ACGA

APPLETON

COMMERCIAL AND INDUSTRIAL FITTINGS: CONDUIT BODIES

Form 85™ Unilets™ Conduit Outlet Bodies, Covers and Gaskets

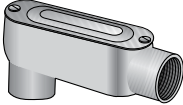
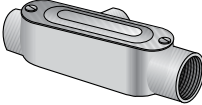
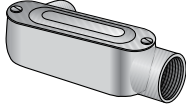
For Rigid Conduit & IMC.



NEC/CEC — Suitable for use in the following

Hazardous Locations:

Class I, Division 2 per NEC 501.10(B)(4)

Appleton™ Form 85™: Complete with Cover

| Hub Size (Inches) | Max. Wire Fill | LB-ACGA | Max. Wire Fill | T-ACGA | Max. Wire Fill | LL-ACGA |
|-------------------|----------------|---|----------------|--|----------------|---|
| | |  | |  | |  |
| 1/2 | ① | LB-50ACGA | ① | T-50ACGA | ① | LL-50ACGA |
| 3/4 | (3) # 6 | LB-75ACGA | (3) # 6 | T-75ACGA | (3) # 6 | LL-75ACGA |
| 1 | (3) # 4 | LB-100ACGA | (3) # 4 | T-100ACGA | (3) # 4 | LL-100ACGA |
| 1-1/4 | (3) # 2 | LB-125ACGA | (3) # 2 | T-125ACGA | (3) # 2 | LL-125ACGA |
| 1-1/2 | (3) # 1/0 | LB-150ACGA | (3) # 1 | T-150ACGA | (3) # 1 | LL-150ACGA |
| 2 | (3) # 4/0 | LB-200ACGA | (3) # 2/0 | T-200ACGA | (3) # 2/0 | LL-200ACGA |

| Hub Size (Inches) | Max. Wire Fill | LR-ACGA | Max. Wire Fill | C-ACGA |
|-------------------|----------------|--|----------------|--|
| | |  | |  |
| 1/2 | ① | LR-50ACGA | ① | C-50ACGA |
| 3/4 | (3) # 6 | LR-75ACGA | (3) # 6 | C-75ACGA |
| 1 | (3) # 4 | LR-100ACGA | (3) # 4 | C-100ACGA |
| 1-1/4 | (3) # 2 | LR-125ACGA | (3) # 2 | C-125ACGA |
| 1-1/2 | (3) # 1 | LR-150ACGA | (3) # 1/0 | C-150ACGA |
| 2 | (3) # 2/0 | LR-200ACGA | (3) # 3/0 | C-200ACGA |

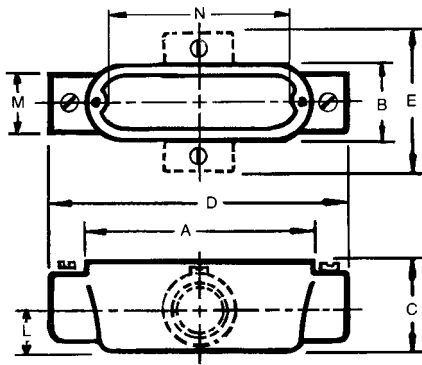
① All 1/2" Max Wire Fill Calculations per the NEC - Annex C - Table C8.

Form 85™ Unilets™ Conduit Outlet Bodies, Covers and Gaskets

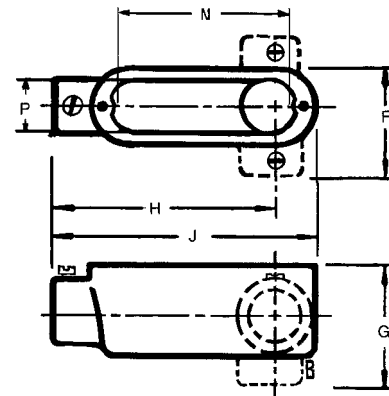
Threaded Type for use with Rigid Metal Conduit and IMC; Setscrew Type for use with Electrical Metallic Tubing (EMT).

NEC/CEC — Suitable for use in the following
Hazardous Locations:
Class I, Division 2 per NEC 501.10(B)(4)

Dimensions in Millimeters (Inches)



Types C, T, X



Types E, LB, LL, LR

| Hub Size (Inches) | Dimensions In Millimeters (Inches) | | | | | | | | | | | | | |
|----------------------|------------------------------------|-----------------|-----------------|------------------|----------------|-----------------|-----------------|------------------|------------------|----------------|-----------------|------------------|-----------------|--|
| | A | B | C | D | E | F | G | H | J | L | M | N | P | |
| Pressure Cast | | | | | | | | | | | | | | |
| 1/2 | 100.1 (3.94) | 33.3 (1.31) | 35.1 (1.38) | 120.7 (4.75) | 65.0 (2.56) | 50.8 (2.00) | 52.3 (2.06) | 88.9 (3.50) | 109.5 (4.31) | 16.0 (0.63) | 28.7 (1.13) | 79.8 (3.14) | 26.7 (1.05) | |
| 3/4 | 117.6 (4.63) | 39.6 (1.56) | 41.4 (1.63) | 143.0 (5.63) | 76.2 (3.00) | 57.2 (2.25) | 62.0 (2.44) | 104.9 (4.13) | 130.3 (5.13) | 19.1 (0.75) | 35.1 (1.38) | 96.0 (3.78) | 32.3 (1.27) | |
| 1 | 136.7 (5.38) | 46.0 (1.81) | 47.8 (1.88) | 169.9 (6.69) | 88.9 (3.50) | 66.8 (2.63) | 71.4 (2.81) | 124.0 (4.88) | 152.4 (6.00) | 23.9 (0.94) | 42.9 (1.69) | 114.3 (4.50) | 38.6 (1.52) | |
| 1-1/4 | 182.6 (7.19) | 63.5 (2.50) | 69.9 (2.75) | 217.4 (8.56) | — | 88.9 (3.50) | 98.6 (3.88) | 166.6 (6.56) | 200.2 (7.88) | 26.9 (1.06) | 54.1 (2.13) | 152.4 (6.00) | 57.2 (2.25) | |
| 1-1/2 | 182.6 (7.19) | 63.5 (2.50) | 69.9 (2.75) | 217.4 (8.56) | — | 88.9 (3.50) | 96.8 (3.81) | 163.6 (6.44) | 200.2 (7.88) | 30.2 (1.19) | 60.5 (2.38) | 152.4 (6.00) | 57.2 (2.25) | |
| 2 | 241.3 (9.50) | 79.5 (3.13) | 87.4 (3.44) | 274.6 (10.81) | — | 106.4 (4.19) | 115.8 (4.56) | 211.1 (8.31) | 258.8 (10.19) | 38.1 (1.50) | 74.7 (2.94) | 204.7 (8.06) | 69.9 (2.75) | |
| Sand Cast | | | | | | | | | | | | | | |
| 2-1/2 | 311.2 (12.25) | 109.5 (4.31) | 98.6 (3.88) | 384.3 (15.13) | — | 146.1 (5.75) | 133.4 (5.25) | 301.8 (11.88) | 347.7 (13.69) | 46.0 (1.81) | 85.9 (3.38) | 270.0 (10.63) | 93.7 (3.69) | |
| 3 | 311.2 (12.25) | 109.5 (4.31) | 117.6 (4.63) | 384.3 (15.13) | — | 146.1 (5.75) | 152.4 (6.00) | 293.6 (11.56) | 347.7 (13.69) | 55.6 (2.19) | 104.9 (4.13) | 270.0 (10.63) | 93.7 (3.69) | |
| 3-1/2 | 378.0 (14.88) | 139.7 (5.50) | 131.8 (5.19) | 460.5 (18.13) | — | 181.1 (7.13) | 173.0 (6.81) | 355.6 (14.00) | 419.1 (16.50) | 63.5 (2.50) | 120.7 (4.75) | 333.5 (13.13) | 124.0 (4.88) | |
| 4 | 378.0 (14.88) | 139.7 (5.50) | 141.2 (5.56) | 460.5 (18.13) | — | 181.1 (7.13) | 182.6 (7.19) | 349.3 (13.75) | 419.1 (16.50) | 69.9 (2.75) | 130.3 (5.13) | 333.5 (13.13) | 124.0 (4.88) | |