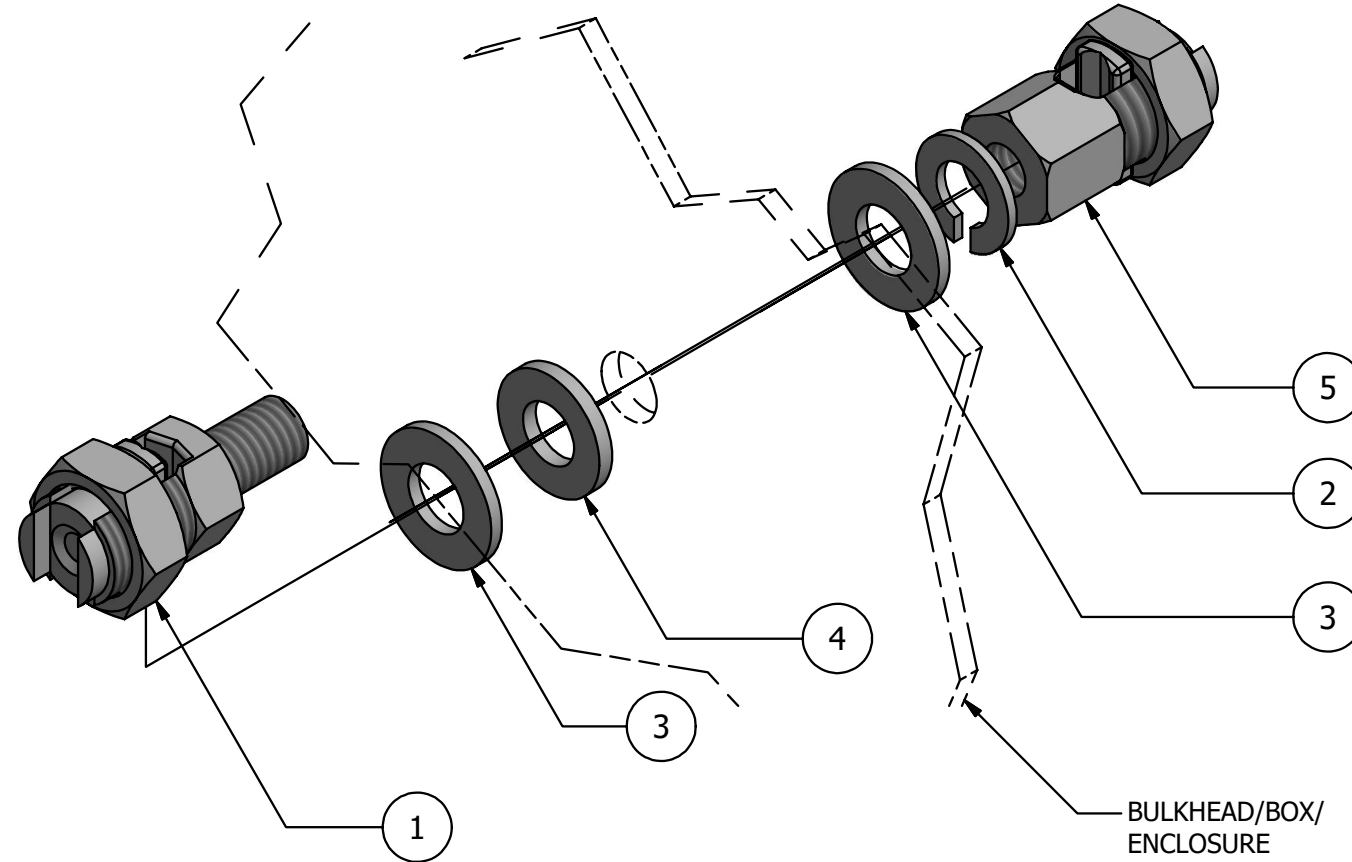


| REV | DATE | DESCRIPTION | ECO | BY | CHK. |
|-----|------------|-----------------------|-------|----|------|
| E | 28/05/2020 | UPDATED AS PER MARKUP | 53643 | TM | EM |

| *** BILL OF MATERIAL *** | | |
|--------------------------|-----|-----------------------------------|
| PT NO. | QTY | DESCRIPTION |
| 1 | 1 | MALE SERVIT POST™ |
| 2 | 1 | STAINLESS STEEL SPLIT LOCK WASHER |
| 3 | 2 | STAINLESS STEEL FLAT WASHER |
| 4 | 1 | SEALING WASHER |
| 5 | 1 | FEMALE SERVIT® |



| CATALOG NUMBER | ACCOMMODATES ² | | NUT TORQUE IN-LBS [N-M] | POST TORQUE IN-LBS [N-M] | MAX THRU HOLE | A | |
|----------------|---------------------------|-----------------|----------------------------------|--------------------------|---------------|--------------|----------|
| | AWG | | | | | | METRIC |
| | STRANDED | SOLID | | | | | STRANDED |
| KCKF23 | #8 (.146 DIA.) | #10 (.102 DIA.) | [10 mm ² (4.1 DIA.)] | 275 [31.1] | 100 [11.3] | 7/16 [30.5] | |
| | #2 (.292 DIA.) | #1 (.289 DIA.) | [35 mm ² (6.5 DIA.)] | | | | |
| KCKF25 | #2 (.292 DIA.) | #2 (.258 DIA.) | [35 mm ² (6.5 DIA.)] | 385 [43.5] | 150 [16.9] | 9/16 [35.8] | |
| | 1/0 (.373 DIA.) | 2/0 (.365 DIA.) | [50 mm ² (9.3 DIA.)] | | | | |
| KCKF28 | #1 (.332 DIA.) | #1 (.289 DIA.) | [50 mm ² (9.3 DIA.)] | 500 [56.5] | 250 [28.2] | 11/16 [54.9] | |
| | 4/0 (.528 DIA.) | 4/0 (.560 DIA.) | [95 mm ² (12.8 DIA.)] | | | | |

NOTES:

1. DIMENSIONS IN BRACKETS [] ARE IN MILLIMETERS ROUNDED OFF TO THE NEAREST MILLIMETER, UNLESS OTHERWISE SPECIFIED AND ARE FOR REFERENCE ONLY.

² ACCOMMODATES: SEE TABLE

³ TORQUE: SEE TABLE

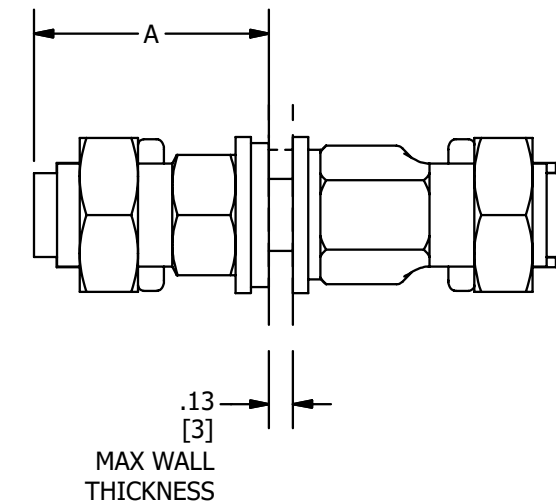
4. MATERIAL:
 BODY, NUT AND PRESSURE PLATE: COPPER
 SPLIT WASHER AND FLAT WASHER: STAINLESS STEEL
 SEALING WASHER: NEOPRENE

5. PLATING: NONE

⁶ ONE FLAT WASHER AND SEALING WASHER TO BE INSTALLED ON OUTSIDE OF BOX OR, WHERE APPLICABLE, TO SIDE OF WALL EXPOSED TO ATMOSPHERIC OR CONTAMINATED CONDITIONS. REMAINING HARDWARE TO BE MOUNTED TO OPPOSITE SIDE OF THE WALL AS SHOWN.

7. HOLD POST SECURE WHILE TORQUING NUT AND PRESSURE BAR ONTO CONDUCTOR. OVER TORQUING CAN CAUSE DAMAGE TO SEALING WASHER RESULTING IN LOSS OF BARRIER PROTECTION.

8. ALL SIZES ARE LISTED TO UL 467 GROUNDING AND BONDING EQUIPMENT STANDARDS. ALL SIZES ARE LISTED TO CSA C22.2 NO.41 GROUNDING AND BONDING EQUIPMENT STANDARDS.



| | | | |
|--|----------------------|--------------|---------------|
| TO ORDER BURNDY® PRODUCTS CALL UNITED STATES 1-800-346-4175 (LONDONDERRY, NH) CANADA: 1-800-361-6975 (QUEBEC) 1-800-387-6487 (ALL OTHER PROVINCES) FOR PRODUCT INFO: http://www.burndy.com | BULKHEAD SERVIT® | | |
| | ITEM NO: N/A | | |
| | CAT. NO: SEE TABLE | | |
| | DRAWN BY: T.REYNOLDS | 28-09-2012 | BURNDY |
| | CHECKER: E.MARTIN | 27-05-2020 | |
| | DSN APRVL: E.MARTIN | 27-05-2020 | |
| | MFG APRVL: -- | | |
| | QA APRVL: J.BRODEUR | 27-05-2020 | |
| | MKT APRVL: S.PARSONS | 27-05-2020 | |
| | PROD FAM: -- | | |
| PROJECT #: EP14456 | SIZE | DRAWING NO | |
| DOCUMENT TYPE: SALES | | 50009515 | |
| REL LEVEL: Released | B | SHEET 1 OF 1 | |