

## Copper Mechanical Connectors

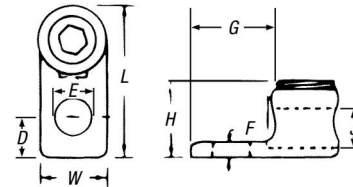
### Type L — Single-Conductor, One-Hole Mount

- Cat. Nos. L400 and L650 cast from high-strength bronze alloy
- Cat. Nos. L35, L70, L125 and L250 cold forged from pure electrolytic copper with 99% conductivity



| CAT. NO. |       | CONDUCTOR RANGE |           | DIMENSIONS (IN.) |         |         |       |       |       |       |        |  |
|----------|-------|-----------------|-----------|------------------|---------|---------|-------|-------|-------|-------|--------|--|
| SOCKET   | HEX   | MAX.            | MIN.      | L                | W       | H       | F     | D     | J     | E     | G      |  |
| L35*     | —     | 8 Str.          | 14 Sol.   | 13/16            | 3/8     | 3/8     | 3/32  | 13/64 | 11/64 | 13/64 | 1/2    |  |
| L70*     | —     | 4 Str.          | 14 Sol.   | 1 1/8            | 17/32   | 35/64   | 3/32  | 9/32  | 9/32  | 9/32  | 21/32  |  |
| L125BB   | L125H | 1/0 Str.        | 8 Sol.    | 1 1/2            | 47/64   | 3/4     | 3/32  | 3/8   | 27/64 | 21/64 | 21/32  |  |
| L250     | L250H | 250 kcmil       | 6 Str.    | 1 5/8            | 15/16   | 1 1/16  | 1/8   | 29/64 | 5/8   | 13/32 | 1 3/32 |  |
| L400BB   | L400H | 500 kcmil       | 4/0 Str.  | 3                | 1 13/32 | 1 15/32 | 9/32  | 5/8   | 7/8   | 9/16  | 1 5/8  |  |
| L650     | L650H | 1,000 kcmil     | 500 kcmil | 4                | 2       | 2 1/16  | 17/32 | 3/4   | 1 1/4 | 9/16  | 2      |  |

\* Sizes L35 and L70 have screwdriver slot head screws only. UL 486A.



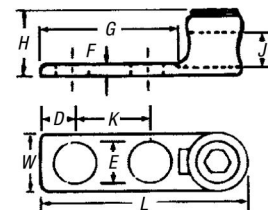
### Type L — Single-Conductor, Two-Hole Mount

- For use where large contact area is required to provide more secure mounting
- Cast from high-strength bronze alloy



| CAT. NO. |        | CONDUCTOR RANGE |           | DIMENSIONS (IN.) |         |         |       |      |       |         |         |       |  |
|----------|--------|-----------------|-----------|------------------|---------|---------|-------|------|-------|---------|---------|-------|--|
| SOCKET   | HEX    | MAX.            | MIN.      | L                | W       | H       | F     | D    | K     | E       | G       | J     |  |
| L1252    | L1252H | 1/0 Str.        | 4 Str.    | 2 13/16          | 25/32   | 13/16   | 3/16  | 7/16 | 1     | 1 11/32 | 2       | 27/64 |  |
| L2502    | L2502H | 250 kcmil       | 1/0 Str.  | 3                | 1 1/16  | 1 1/32  | 15/64 | 7/16 | 1     | 1 13/32 | 1 1/8   | 5/8   |  |
| L4002    | L4002H | 500 kcmil       | 4/0 Str.  | 3 3/8            | 1 13/32 | 1 19/32 | 9/16  | 7/16 | 1     | 1 13/32 | 1 15/16 | 57/64 |  |
| L6502    | L6502H | 1000 kcmil      | 500 kcmil | 4 15/16          | 2       | 2       | 3/8   | 9/16 | 1 1/2 | 9/16    | 2 3/4   | 1 1/4 |  |

UL 486A



### Type TL — Two-Conductor, Two-Hole Mount

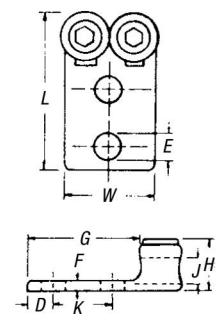
- Conveniently terminates parallel conductors



| CAT. NO. |        | CONDUCTOR RANGE |           | DIMENSIONS (IN.) |        |        |       |       |        |      |        |       |  |
|----------|--------|-----------------|-----------|------------------|--------|--------|-------|-------|--------|------|--------|-------|--|
| SOCKET   | HEX    | MAX.            | MIN.      | L                | W      | H      | F     | D     | K      | E    | G      | J     |  |
| TL250    | TL250H | 250 kcmil       | 1/0 Str.  | 4 5/16           | 1 7/8  | 1 1/16 | 9/32  | 1 3/4 | 5/8    | 9/16 | 3 3/16 | 5/8   |  |
| TL400    | TL400H | 500 kcmil       | 4/0 Str.  | 4 3/4            | 2 9/16 | 1 9/16 | 19/32 | 1 3/4 | 1 1/16 | 9/16 | 3      | 7/8   |  |
| TL650    | TL650H | 1,000 kcmil     | 500 kcmil | 5 5/16           | 3 3/4  | 2 3/16 | 9/16  | 1 3/4 | 5/8    | 9/16 | 3 3/8  | 1 1/4 |  |

Four hole NEMA tang on TL650.

UL 486A.



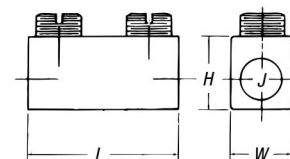
### Type S — Copper End-to-End Splice Connector

- Cast of high-strength copper alloy
- Plated steel socket head set screws



| CAT. NO. | CONDUCTOR RANGE |          | DIMENSIONS (IN.) |        |        |      |        |
|----------|-----------------|----------|------------------|--------|--------|------|--------|
|          | MAX.            | MIN.     | L                | W      | H      | J    | I      |
| S100BB   | 1 Str.          | 4 Sol.   | 1 11/16          | 5/8    | 1 1/16 | 3/8  | 1 5/16 |
| S225BB*  | 4/0 Str.        | 1 Str.   | 2 3/16           | 27/32  | 31/32  | 9/16 | 1 1/16 |
| S400BB   | 500 kcmil       | 4/0 Str. | 2 7/8            | 1 3/16 | 1 1/16 | 7/8  | 1 5/8  |

\* Not UL Listed.



## Copper Mechanical Connectors

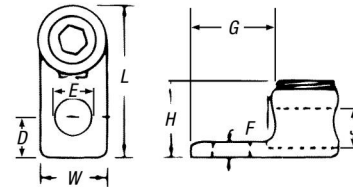
### Type L — Single-Conductor, One-Hole Mount

- Cat. Nos. L400 and L650 cast from high-strength bronze alloy
- Cat. Nos. L35, L70, L125 and L250 cold forged from pure electrolytic copper with 99% conductivity



| CAT. NO. |       | CONDUCTOR RANGE |           | DIMENSIONS (IN.) |         |         |       |       |       |       |        |  |
|----------|-------|-----------------|-----------|------------------|---------|---------|-------|-------|-------|-------|--------|--|
| SOCKET   | HEX   | MAX.            | MIN.      | L                | W       | H       | F     | D     | J     | E     | G      |  |
| L35*     | —     | 8 Str.          | 14 Sol.   | 13/16            | 3/8     | 3/8     | 3/32  | 13/64 | 11/64 | 13/64 | 1/2    |  |
| L70*     | —     | 4 Str.          | 14 Sol.   | 1 1/8            | 17/32   | 35/64   | 3/32  | 9/32  | 9/32  | 9/32  | 21/32  |  |
| L125BB   | L125H | 1/0 Str.        | 8 Sol.    | 1 1/2            | 47/64   | 3/4     | 3/32  | 3/8   | 27/64 | 21/64 | 27/32  |  |
| L250     | L250H | 250 kcmil       | 6 Str.    | 1 5/8            | 15/16   | 1 1/16  | 1/8   | 29/64 | 5/8   | 13/32 | 1 3/32 |  |
| L400BB   | L400H | 500 kcmil       | 4/0 Str.  | 3                | 1 13/32 | 1 15/32 | 9/32  | 5/8   | 7/8   | 9/16  | 1 5/8  |  |
| L650     | L650H | 1,000 kcmil     | 500 kcmil | 4                | 2       | 2 1/16  | 17/32 | 3/4   | 1 1/4 | 9/16  | 2      |  |

\* Sizes L35 and L70 have screwdriver slot head screws only. UL 486A.



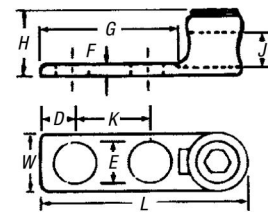
### Type L — Single-Conductor, Two-Hole Mount

- For use where large contact area is required to provide more secure mounting
- Cast from high-strength bronze alloy



| CAT. NO. |        | CONDUCTOR RANGE |           | DIMENSIONS (IN.) |         |         |       |      |       |         |         |       |  |
|----------|--------|-----------------|-----------|------------------|---------|---------|-------|------|-------|---------|---------|-------|--|
| SOCKET   | HEX    | MAX.            | MIN.      | L                | W       | H       | F     | D    | K     | E       | G       | J     |  |
| L1252    | L1252H | 1/0 Str.        | 4 Str.    | 2 13/16          | 25/32   | 13/16   | 3/16  | 7/16 | 1     | 1 11/32 | 2       | 27/64 |  |
| L2502    | L2502H | 250 kcmil       | 1/0 Str.  | 3                | 1 1/16  | 1 1/32  | 15/64 | 7/16 | 1     | 1 13/32 | 1 1/8   | 5/8   |  |
| L4002    | L4002H | 500 kcmil       | 4/0 Str.  | 3 3/8            | 1 13/32 | 1 19/32 | 9/16  | 7/16 | 1     | 1 13/32 | 1 15/16 | 57/64 |  |
| L6502    | L6502H | 1000 kcmil      | 500 kcmil | 4 15/16          | 2       | 2       | 3/8   | 9/16 | 1 1/2 | 9/16    | 2 3/4   | 1 1/4 |  |

UL 486A



### Type TL — Two-Conductor, Two-Hole Mount

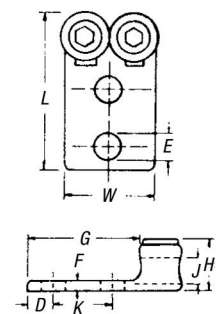
- Conveniently terminates parallel conductors



| CAT. NO. |        | CONDUCTOR RANGE |           | DIMENSIONS (IN.) |        |        |       |       |        |      |        |       |  |
|----------|--------|-----------------|-----------|------------------|--------|--------|-------|-------|--------|------|--------|-------|--|
| SOCKET   | HEX    | MAX.            | MIN.      | L                | W      | H      | F     | D     | K      | E    | G      | J     |  |
| TL250    | TL250H | 250 kcmil       | 1/0 Str.  | 4 5/16           | 1 7/8  | 1 1/16 | 9/32  | 1 3/4 | 5/8    | 9/16 | 3 3/16 | 5/8   |  |
| TL400    | TL400H | 500 kcmil       | 4/0 Str.  | 4 3/4            | 2 9/16 | 1 9/16 | 19/32 | 1 3/4 | 1 1/16 | 9/16 | 3      | 7/8   |  |
| TL650    | TL650H | 1,000 kcmil     | 500 kcmil | 5 5/16           | 3 3/4  | 2 3/16 | 9/16  | 1 3/4 | 5/8    | 9/16 | 3 3/8  | 1 1/4 |  |

Four hole NEMA tang on TL650.

UL 486A.



### Type S — Copper End-to-End Splice Connector

- Cast of high-strength copper alloy
- Plated steel socket head set screws



| CAT. NO. | CONDUCTOR RANGE |          | DIMENSIONS (IN.) |        |        |      |        |
|----------|-----------------|----------|------------------|--------|--------|------|--------|
|          | MAX.            | MIN.     | L                | W      | H      | J    | I      |
| S100BB   | 1 Str.          | 4 Sol.   | 1 11/16          | 5/8    | 1 1/16 | 3/8  | 1 5/16 |
| S225BB*  | 4/0 Str.        | 1 Str.   | 2 3/16           | 27/32  | 31/32  | 9/16 | 1 1/16 |
| S400BB   | 500 kcmil       | 4/0 Str. | 2 7/8            | 1 3/16 | 1 1/16 | 7/8  | 1 5/8  |

\* Not UL Listed.

