

## Hazardous Location Fittings

Provides maximum volume for bends within a compact overall size!

### Capped Iron Elbow — Female to Female

#### Application

LBY/GYF elbows are installed in conduit systems within hazardous areas to:

- Make 90° bends in conduit systems where space is limited
- Act as pull outlets
- Provide access to conductors for maintenance and future system changes

#### Features

- Maximum volume for bends within a compact overall size
- Screw on cover for ease of installation and removal
- Cover opening on an angle, permitting conductors to be pulled straight through either hub
- Tapered threaded hubs and integral bushing for rigid threaded conduit

#### Standard Materials

LBY Ductile Iron  
GYF Copper Free Aluminum

#### Listings/Compliances (LBY)

Cl. I, Div. 1 & 2, Groups C, D  
Cl. II, Div. 1, Groups E, F, G  
Cl. III, Div. 1 & 2

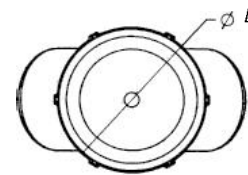
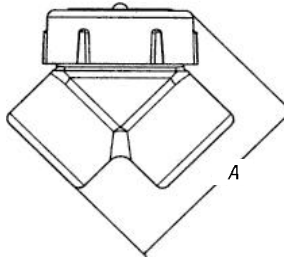
NEMA 3, 4, 7 CD, 9 EFG

Explosion-Proof

Dust-Ignition-Proof

Raintight

Wet Locations



CAT. NO.	HUB SIZE	A	B	THROAT DIM.	
				MIN.	MAX.
LBY15-TB	½"	2 <sup>9</sup> / <sub>16</sub>	2	.570	.610
LBY25-TB	¾"	2 <sup>13</sup> / <sub>16</sub>	2¼	.755	.810
LBY35-TB	1"	3 <sup>3</sup> / <sub>32</sub>	2½	.955	1.035
LBY45-TB	1¼"	3¾	2 <sup>11</sup> / <sub>16</sub>	1.260	1.360
LBY55-TB	1½"	4¼	3 <sup>3</sup> / <sub>8</sub>	1.470	1.590
LBY65-TB	2"	5½	4	1.880	2.047

### Capped Aluminum Elbow — Female to Female



CAT. NO.	HUB SIZE	UNIT QTY.	STD. PKG.	WT. LBS. PER 100
GYF-1	½"	10	50	23
GYF-2	¾"	5	25	40
GYF-3	1"	5	25	60
GYF-4•	1¼"	2	10	80
GYF-5	1½"	2	10	95

• Made-to-order items. Consult factory for lead time and minimum quantities.