

Compression Connectors

Made of high-conductivity seamless copper tubing, tin plated for corrosion resistance.

Type LCN — Copper Two-Hole Lugs, Long Barrel



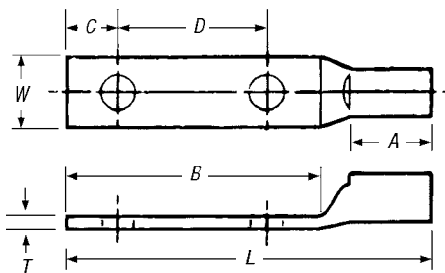
Copper Compression Connectors

- For use with copper conductor: AWG stranded, flexible cable, welding cable and portable cord
- Specially designed for industrial and building applications
- Made of high-conductivity seamless copper tubing
- Tin plated for corrosion resistance
- Specially chamfered barrel for ease of installation
- Color coded for matching die identification
- Can be used for high-voltage application up to 35kV provided proper high-voltage insulation techniques are used

- UL® Listed for AWG conductor when installed with Blackburn®, Burndy®, T&B® or Anderson tools
- Comply with Subpart 111.60-17 of Federal Register's Coast Guard Electrical Engineering Rules and Regulations

Long-Barrel Connectors

- Ideal for industrial, oil rig, mining, welding and transportation electrical termination applications
- Heavy-duty design permits additional crimp for added mechanical strength



CAT. NO.	CONDUCTOR SIZE (CU)	FLEXIBLE CONDUCTOR SIZE	STRANDING	STUD SIZE	DIMENSIONS (IN.)							DIE COLOR CODE
					A	B	C	D	L	W	T	
LCN8-14	#8 Str.	#8	37/24	1/4	2 5/32	1 3/16	1/4	3/8	2 1/8	1 5/32	1/16	RED
LCN6-14	#6 Str.	#6	61/24	1/2	2 5/32	1 1/4	1/4	3/8	2 1/4	1 3/32	1/16	BLUE
LCN6-12	#6 Str.	#6	61/24	1/2	2 5/32	3	1/2	1 3/4	4 3/32	1/8	3/32	GRAY
LCN4-14	#4 Str.	#5	91/24	1/4	2 5/32	1 3/16	1/4	3/8	2 3/16	1 7/32	3/16	GRAY
LCN4-12	#4 Str.	#5	91/24	1/2	2 5/32	3	1/2	1 3/4	4 3/32	1/8	3/32	BROWN
LCN2-516	#2 Str.	#3	125/24	3/16	1/8	1 1/8	3/8	3/4	2 15/16	9/16	3/32	BROWN
LCN2-12	#2 Str.	#3	125/24	1/2	7/8	3	1/2	1 3/4	4 1/4	7/8	3/32	GREEN
LCN1-516	#1 Str.	#2	150/24	3/16	1 1/32	1 1/8	3/8	1/2	2 21/32	2 1/32	3/32	GREEN
LCN1-12	#1 Str.	#2	150/24	1/2	1 1/32	3	1/2	1 3/4	4 13/32	1/8	3/32	PINK
LCN10	1/0	#1	225/24	1/2	1 1/32	3	1/2	1 3/4	3 13/32	3/4	1/8	BLACK
LCN20	2/0	1/0	275/24	1/2	1 1/16	3	1/2	1 3/4	4 3/16	1 3/16	1/8	ORANGE
LCN30	3/0	2/0	325/24	1/2	1 1/8	2 15/16	1/2	1 3/4	4 1/16	1 5/16	1/8	PURPLE
LCN40	4/0	—	—	1/2	1 1/8	3	1/2	1 3/4	4 1/16	1 3/32	1/8	YELLOW
LCN250	250 kcmil	3/0	450/24	1/2	1 19/32	3	1/2	1 3/4	4 29/32	1 1/16	1/8	WHITE
LCN300	300 kcmil	4/0	550/24	1/2	1 25/32	3	1/2	1 3/4	5 3/32	1 3/16	1/8	RED
LCN350	350 kcmil	263 kcmil	650/24	1/2	1 27/32	3	1/2	1 3/4	5 11/32	1 11/32	5/32	BLUE
LCN400	400 kcmil	313 kcmil	775/24	1/2	1 21/32	3	1/2	1 3/4	5 1/16	1 13/32	1/8	BLUE
LCN500	500 kcmil	373 kcmil	925/24	1/2	2 1/32	3	1/2	1 3/4	5 19/16	1 13/32	3/16	BROWN
LCN600	600 kcmil	444 kcmil	1100/24	1/2	2 1/8	3	1/2	1 3/4	5 3/4	1 23/32	7/32	GREEN
LCN75	750 kcmil	535 kcmil	1325/24	1/2	2 3/8	3	1/2	1 3/4	6 3/32	1 29/32	1/4	BLACK
LCN99	1000 kcmil	646 kcmil	1600/24	1/2	2 1/8	3	1/2	1 3/4	6 13/32	2 1/4	3/32	N/A