



LVP-1



LVP-1 Installed

Low Voltage Partition	Catalog Number	Component Description	UPC# 85339	Std. Pkg. Qty.	Std. Wt. (lb.)
	LVP-1	Low voltage divider plate for use with 2302, 3303, 4304, 5305 Series and 9314 only. See 2008 NEC 800.133(A)(1)(c).	80000	50*	3

* Consists of ten (10) packages of five (5) pieces each.



9312-EK



9312-EWC2



9312-EWC4





9312-EWK




9329-EWK



2TP

Ears	Cu. In. Volume	Catalog Number	Component Description	Exterior Dimensions			UPC# 85339	Std. Pkg. Qty.	Std. Wt. (lb.)
				D	W	H			
	28.0	9312-E	 Ears, Speed Klamps™- bulk packed	2-¾	4-1/8	3-¼	10064	50	23
	28.0	9312-EK	 Ears, Speed Klamps™- factory installed	2-¾	4-1/8	3-¼	29112	50	24

Ears & Wing Brackets	Cu. In. Volume	Catalog Number	Component Description	Exterior Dimensions			UPC# 85339	Std. Pkg. Qty.	Std. Wt. (lb.)
				D	W	H			
	28.0	9312-EW	 Ears, wing brackets, Speed Klamps™- bulk packed	2-¾	4-1/8	3-¼	29100	50	25
	28.0	9312-EWC2	 Ears, wing brackets, 2 wire clamps - factory installed	2-¾	4-1/8	3-¼	29110	50	26
	28.0	9312-EWC4	 Ears, wing brackets, 4 wire clamps - factory installed	2-¾	4-1/8	3-¼	29120	50	28
	28.0	9312-EWK	 Ears, wing brackets, Speed Klamps™- factory installed	2-¾	4-1/8	3-¼	29111	50	25
	32.5	9329-EW	 Ears, wing brackets, Speed Klamps™- bulk packed	3-¼	4-1/8	3-¼	10801	50	27
	32.5	9329-EWK	 Ears, wing brackets, Speed Klamps™- factory installed	3-¼	4-1/8	3-¼	10802	50	27

Template	Catalog Number	Component Description	UPC# 85339	Std. Pkg. Qty.	Std. Wt. (lb.)
	2TP	 Metal template for two gang old work box: 9312-E series, 9329-E series	88016	1	2

All dimensions are in inches unless otherwise noted.
See page 7 for Attachment Coding suffix descriptions.

 Old Work/Manufactured Housing Boxes

 Flush-Device Box
UL File No. E30594

fiberglass BOX™ Three Gang

Residential Switch or Receptacle Box



3300-2Z2K



3300-Z2K



3303-2Z4K



3303-Z4K



3300-Z2BK

	Cu. In. Volume	Catalog Number	Component Description	Exterior Dimensions			UPC# 85339	Std. Pkg. Qty.	Std. Wt. (lb.)
				D	W	H			
"Z" Hanger	46.0	3300-2Z2	¼" offset, "Z" hanger each side of box, Speed Klamps™ - bulk packed	3	5-11/16	3-¾	14700	25	29
	46.0	3300-2Z2K	¼" offset, "Z" hanger each side of box, Speed Klamps™ - factory installed	3	5-11/16	3-¾	14702	25	29
	46.0	3300-2Z4	½" offset, "Z" hanger each side of box, Speed Klamps™ - bulk packed	3	5-11/16	3-¾	15120	25	29
	46.0	3300-2Z4K	½" offset, "Z" hanger each side of box, Speed Klamps™ - factory installed	3	5-11/16	3-¾	15121	25	29
	46.0	3300-Z2	¼" offset, "Z" hanger, Speed Klamps™ - bulk packed	3	5-11/16	3-¾	14560	25	24
	46.0	3300-Z2K	¼" offset, "Z" hanger, Speed Klamps™ - factory installed	3	5-11/16	3-¾	14562	25	24
	46.0	3300-Z4	½" offset, "Z" hanger, Speed Klamps™ - bulk packed	3	5-11/16	3-¾	14980	24	24
	46.0	3300-Z4K	½" offset, "Z" hanger, Speed Klamps™ - factory installed	3	5-11/16	3-¾	15017	24	24
	56.5	3303-2Z4	½" offset, "Z" hanger each side of box, Speed Klamps™ - bulk packed	3-9/16	5-11/16	3-¾	15222	25	33
	56.5	3303-2Z4K	½" offset, "Z" hanger each side of box, Speed Klamps™ - factory installed	3-9/16	5-11/16	3-¾	15223	25	33
	56.5	3303-Z4	½" offset, "Z" hanger, Speed Klamps™ - bulk packed	3-9/16	5-11/16	3-¾	15205	20	21
	56.5	3303-Z4K	½" offset, "Z" hanger, Speed Klamps™ - factory installed	3-9/16	5-11/16	3-¾	15206	20	22

	Cu. In. Volume	Catalog Number	Component Description	Exterior Dimensions			UPC# 85339	Std. Pkg. Qty.	Std. Wt. (lb.)
				D	W	H			
"Z" Hanger with Bar	46.0	3300-Z2B	¼" offset, "Z" hanger, adjustable stabilizing bar, Speed Klamps™ - bulk packed	3	5-11/16	3-¾	14595	20	25
	46.0	3300-Z2BK	¼" offset, "Z" hanger, adjustable stabilizing bar, Speed Klamps™ - factory installed	3	5-11/16	3-¾	14597	20	25



LVP-1



LVP-1 Installed



9313-EWC3



9313-EWK

Low Voltage Partition	Catalog Number	Component Description	UPC# 85339	Std. Pkg. Qty.	Std. Wt. (lb.)
	LVP-1	Low voltage divider plate for use with 2302, 3303, 4304, 5305 Series and 9314 only. See 2008 NEC 800.133(A)(1)(c).	80000	50*	3

* Consists of ten (10) packages of five (5) pieces each.

Ears with Wing Brackets	Cu. In. Volume	Catalog Number	Component Description	Exterior Dimensions			UPC# 85339	Std. Pkg. Qty.	Std. Wt. (lb.)
				D	W	H			
	42.5	9313-EW	Ears, wing brackets, Speed Klamps™- bulk packed	2-7/8	5-15/16	3-¼	10093	25	17
	42.5	9313-EWC3	Ears, wing brackets, 3 wire clamps - factory installed	2-7/8	5-15/16	3-¼	10095	25	18
	42.5	9313-EWK	Ears, wing brackets, Speed Klamps™- factory installed	2-7/8	5-15/16	3-¼	10094	25	17

All dimensions are in inches unless otherwise noted.
See page 7 for Attachment Coding suffix descriptions.

Old Work/Manufactured Housing Boxes

Flush-Device Box
UL File No. E30594

fiberglassBOX™ Four Gang Residential Switch or Receptacle Box



4300-2Z2K



4300-Z2K



4300-Z2BK



4304-Z4BK

	Cu. In. Volume	Catalog Number	Component Description	Exterior Dimensions			UPC# 85339	Std. Pkg. Qty.	Std. Wt. (lb.)
				D	W	H			
"Z" Hanger	60.0	4300-2Z2	¼" offset, "Z" hanger each side of box, Speed Klamps™ - bulk packed	3	7-½	3-¾	16905	12	15
	60.0	4300-2Z2K	¼" offset, "Z" hanger each side of box, Speed Klamps™ - factory installed	3	7-½	3-¾	16907	12	15
	60.0	4300-Z2	¼" offset, "Z" hanger, Speed Klamps™ - bulk packed	3	7-½	3-¾	16725	12	14
	60.0	4300-Z2K	¼" offset, "Z" hanger, Speed Klamps™ - factory installed	3	7-½	3-¾	16906	12	14
	60.0	4300-Z4	½" offset, "Z" hanger, Speed Klamps™ - bulk packed	3	7-½	3-¾	18265	12	15
	60.0	4300-Z4K	½" offset, "Z" hanger, Speed Klamps™ - factory installed	3	7-½	3-¾	17312	12	22
	75.0	4304-2Z4	½" offset, "Z" hanger each side of box, Speed Klamps™ - bulk packed	3-9/16	7-½	3-¾	17560	12	17
	75.0	4304-2Z4K	½" offset, "Z" hanger each side of box, Speed Klamps™ - factory installed	3-9/16	7-½	3-¾	17561	12	17

	Cu. In. Volume	Catalog Number	Component Description	Exterior Dimensions			UPC# 85339	Std. Pkg. Qty.	Std. Wt. (lb.)
				D	W	H			
"Z" Hanger with Bar	60.0	4300-Z2B	¼" offset, "Z" hanger, adjustable stabilizing bar, Speed Klamps™ - bulk packed	3	7-½	3-¾	16770	6	9
	60.0	4300-Z2BK	¼" offset, "Z" hanger, adjustable stabilizing bar, Speed Klamps™ - factory installed	3	7-½	3-¾	16771	6	9
	75.0	4304-Z4B	½" offset, "Z" hanger, adjustable stabilizing bar, Speed Klamps™ - bulk packed	3-9/16	7-½	3-¾	17554	6	10
	75.0	4304-Z4BK	½" offset, "Z" hanger, adjustable stabilizing bar, Speed Klamps™ - factory installed	3-9/16	7-½	3-¾	17555	6	10



LVP-1



9314-EWK

Low Voltage Partition	Catalog Number	Component Description	UPC# 85339	Std. Pkg. Qty.	Std. Wt. (lb.)
	LVP-1	Low voltage divider plate for use with 2302, 3303, 4304, 5305 Series and 9314 only. See 2008 NEC 800.133(A)(1)(c).	80000	50*	3

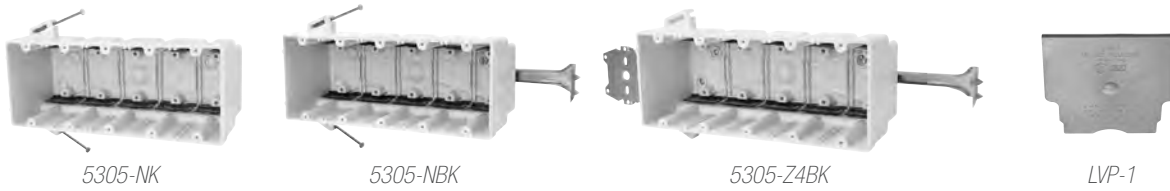
* Consists of ten (10) packages of five (5) pieces each.

Ears w/ Wing Brackets	Cu. In. Volume	Catalog Number	Component Description	Exterior Dimensions			UPC# 85339	Std. Pkg. Qty.	Std. Wt. (lb.)
				D	W	H			
	70.0	9314-EWK	Ears, wing brackets, ½" knockouts, Speed Klamps™ - factory installed	3-9/16	7-11/16	3-¾	31800	6	8

All dimensions are in inches unless otherwise noted.
See page 7 for Attachment Coding suffix descriptions.

Old Work/Manufactured Housing Boxes

Flush-Device Box
UL File No. E30594



	Cu. In. Volume	Catalog Number	Component Description	Exterior Dimensions			UPC# 85339	Std. Pkg. Qty.	Std. Wt. (lb.)
				D	W	H			
Nail-On	94.0	5305-NK	Angled mid-nails, Speed Klamps™ - factory installed	3-9/16	9-5/16	3-3/4	18001	6	9
	94.0	5305-NBK	Angled mid-nails, adjustable stabilizing bar, Speed Klamps™ - factory installed	3-9/16	9-5/16	3-3/4	18002	6	10
"Z" Hanger with Bar	94.0	5305-Z4BK	1/2" offset, "Z" hanger, adjustable stabilizing bar, Speed Klamps™ - factory installed	3-9/16	9-5/16	3-3/4	18003	6	12
Low Voltage Partition									

* Consists of ten (10) packages of five (5) pieces each.

All dimensions are in inches unless otherwise noted.
See page 7 for Attachment Coding suffix descriptions.

 Flush-Device Box
UL File No. E30594

Structured Cable/Low Voltage

Single Gang Boxes, Low Voltage Partitions, Plaster Rings



ALLIED
MOULDED
PRODUCTS, Inc.



LVBOW-1



LVB-1



LVPR-1



LVP-1



LVP-2

Structured Cable/Low Voltage

Catalog Number	Component Description	Exterior Dimensions			UPC# 85339	Std. Pkg. Qty.	Std. Wt. (lb.)
		D	W	H			
LVBOW-1	Single gang, old work, structured cable box with ears and wings	3-1/16	2-5/16	3-11/16	80003	24	5
LVB-1	Single gang, angled mid-nails, structured cable box	2-3/4	2-1/4	3-3/4	80002	48	9
LVPR-1	Single gang plaster ring, 1/2" offset, structured cable bracket for steel or wood stud face mounting	5/8	4	4	80001	50	4
LVP-1	Low voltage divider plate for use with fiberglassBOX™ series 2302, 3303, 4304, 5305, and 9314 only	3/32	3-5/16	3-3/4	80000	50*	3
LVP-2	Low voltage divider plate for use with SLIDERBOX® series SB-2, SB-3, and SB-4; and flexBOX® part numbers P-442, P-442QT, P-643, P-643QT, P-764, P-764QT, P-764B, P-764H, P-764HBQT, P-2400W, and P-3520W	3-32	3-1/16	3-1/2	80005	50*	3

* Consists of ten (10) packages of five (5) pieces each.

LVBOW-1 Features and Benefits

- Old work structured cable box
- Sturdy construction with “box-like” strength and rigidity
- Molded thread device holes provide for secure mounting of structured cable devices and cover plates
- Eliminates the need to modify single gang outlet boxes
- Open back design for generous cable bend radius
- Holes in back section provide a means to secure the cable allowing cable accessibility later (Fig. A)
- U.S. Patents D531,128 and 7,179,994



LVB-1 Features and Benefits

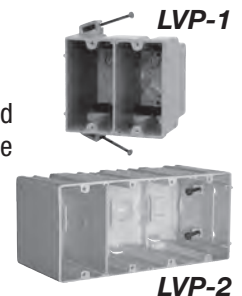
- New work structured cable box
- Sturdy construction with “box-like” strength and rigidity
- Eliminates need to modify single gang box
- Open back for generous cable bend radius
- Easy nail-on mounting design
- Holes on back provide a means to wire tie the cable allowing cable accessibility later (Fig. A)
- Open back channel to store and protect cable during drywall phase (Fig. B)
- US Patents D531,128 and 7,179,994



LVP-1/LVP-2 Features and Benefits

- Separates line and low voltage within the same electrical box
- Use LVP-1 with Allied Moulded’s deep series 2302, 3303, 4304, 5305, and 9314 fiberglass boxes
- Use LVP-2 with Allied Moulded’s flexBOX® products and SLIDERBOX® products (see chart above for specific part numbers)
- Allows for a reduced number of wall box installations
- Fast, easy and convenient to install

- Complies with article 800.133(A)(1)(c) from 2008 NEC
- For low voltage applications in fire rated walls, utilize the LVP-1 partition with the Allied Moulded deep series fiberglass wall boxes which carry the industry exclusive rating for reduced horizontal separation in the same stud cavity



All dimensions are in inches unless otherwise noted.

Old Work/Manufactured Housing Boxes



UL File No. E245435 - Boxes
UL File No. E30594 - Partitions



LVP-1



LVP-1 Installed

Low Voltage Partition	Catalog Number	Component Description	UPC# 85339	Std. Pkg. Qty.	Std. Wt. (lb.)
	LVP-1	Low voltage divider plate for use with 2302, 3303, 4304, 5305 Series and 9314 only. See 2008 NEC 800.133(A)(1)(c).		80000	50*

* Consists of ten (10) packages of five (5) pieces each.



9312-EK



9312-EWC2



9312-EWC4





9312-EWK










9329-EWK



2TP

Ears	Cu. In. Volume	Catalog Number	Component Description	Exterior Dimensions			UPC# 85339	Std. Pkg. Qty.	Std. Wt. (lb.)
				D	W	H			
	28.0	9312-E	 Ears, Speed Klamps™- bulk packed	2-3/4	4-1/8	3-1/4	10064	50	23
	28.0	9312-EK	 Ears, Speed Klamps™- factory installed	2-3/4	4-1/8	3-1/4	29112	50	24

Ears & Wing Brackets	Cu. In. Volume	Catalog Number	Component Description	Exterior Dimensions			UPC# 85339	Std. Pkg. Qty.	Std. Wt. (lb.)
				D	W	H			
	28.0	9312-EW	 Ears, wing brackets, Speed Klamps™- bulk packed	2-3/4	4-1/8	3-1/4	29100	50	25
	28.0	9312-EWC2	 Ears, wing brackets, 2 wire clamps - factory installed	2-3/4	4-1/8	3-1/4	29110	50	26
	28.0	9312-EWC4	 Ears, wing brackets, 4 wire clamps - factory installed	2-3/4	4-1/8	3-1/4	29120	50	28
	28.0	9312-EWK	 Ears, wing brackets, Speed Klamps™- factory installed	2-3/4	4-1/8	3-1/4	29111	50	25
	32.5	9329-EW	 Ears, wing brackets, Speed Klamps™- bulk packed	3-1/4	4-1/8	3-1/4	10801	50	27
	32.5	9329-EWK	 Ears, wing brackets, Speed Klamps™- factory installed	3-1/4	4-1/8	3-1/4	10802	50	27

Template	Catalog Number	Component Description	UPC# 85339	Std. Pkg. Qty.	Std. Wt. (lb.)
	2TP	 Metal template for two gang old work box: 9312-E series, 9329-E series	88016	1	2

All dimensions are in inches unless otherwise noted.
See page 7 for Attachment Coding suffix descriptions.

 Old Work/Manufactured Housing Boxes

 Flush-Device Box
UL File No. E30594

fiberglass BOX™ Three Gang

Residential Switch or Receptacle Box



3300-2Z2K



3300-Z2K



3303-2Z4K



3303-Z4K



3300-Z2BK

	Cu. In. Volume	Catalog Number	Component Description	Exterior Dimensions			UPC# 85339	Std. Pkg. Qty.	Std. Wt. (lb.)
				D	W	H			
"Z" Hanger	46.0	3300-2Z2	¼" offset, "Z" hanger each side of box, Speed Klamps™ - bulk packed	3	5-11/16	3-¾	14700	25	29
	46.0	3300-2Z2K	¼" offset, "Z" hanger each side of box, Speed Klamps™ - factory installed	3	5-11/16	3-¾	14702	25	29
	46.0	3300-2Z4	½" offset, "Z" hanger each side of box, Speed Klamps™ - bulk packed	3	5-11/16	3-¾	15120	25	29
	46.0	3300-2Z4K	½" offset, "Z" hanger each side of box, Speed Klamps™ - factory installed	3	5-11/16	3-¾	15121	25	29
	46.0	3300-Z2	¼" offset, "Z" hanger, Speed Klamps™ - bulk packed	3	5-11/16	3-¾	14560	25	24
	46.0	3300-Z2K	¼" offset, "Z" hanger, Speed Klamps™ - factory installed	3	5-11/16	3-¾	14562	25	24
	46.0	3300-Z4	½" offset, "Z" hanger, Speed Klamps™ - bulk packed	3	5-11/16	3-¾	14980	24	24
	46.0	3300-Z4K	½" offset, "Z" hanger, Speed Klamps™ - factory installed	3	5-11/16	3-¾	15017	24	24
	56.5	3303-2Z4	½" offset, "Z" hanger each side of box, Speed Klamps™ - bulk packed	3-9/16	5-11/16	3-¾	15222	25	33
	56.5	3303-2Z4K	½" offset, "Z" hanger each side of box, Speed Klamps™ - factory installed	3-9/16	5-11/16	3-¾	15223	25	33
	56.5	3303-Z4	½" offset, "Z" hanger, Speed Klamps™ - bulk packed	3-9/16	5-11/16	3-¾	15205	20	21
	56.5	3303-Z4K	½" offset, "Z" hanger, Speed Klamps™ - factory installed	3-9/16	5-11/16	3-¾	15206	20	22

	Cu. In. Volume	Catalog Number	Component Description	Exterior Dimensions			UPC# 85339	Std. Pkg. Qty.	Std. Wt. (lb.)
				D	W	H			
"Z" Hanger with Bar	46.0	3300-Z2B	¼" offset, "Z" hanger, adjustable stabilizing bar, Speed Klamps™ - bulk packed	3	5-11/16	3-¾	14595	20	25
	46.0	3300-Z2BK	¼" offset, "Z" hanger, adjustable stabilizing bar, Speed Klamps™ - factory installed	3	5-11/16	3-¾	14597	20	25



LVP-1



LVP-1 Installed



9313-EWC3



9313-EWK

Low Voltage Partition	Catalog Number	Component Description	UPC# 85339	Std. Pkg. Qty.	Std. Wt. (lb.)
	LVP-1	Low voltage divider plate for use with 2302, 3303, 4304, 5305 Series and 9314 only. See 2008 NEC 800.133(A)(1)(c).	80000	50*	3

* Consists of ten (10) packages of five (5) pieces each.

Ears with Wing Brackets	Cu. In. Volume	Catalog Number	Component Description	Exterior Dimensions			UPC# 85339	Std. Pkg. Qty.	Std. Wt. (lb.)
				D	W	H			
	42.5	9313-EW	Ears, wing brackets, Speed Klamps™- bulk packed	2-7/8	5-15/16	3-¼	10093	25	17
	42.5	9313-EWC3	Ears, wing brackets, 3 wire clamps - factory installed	2-7/8	5-15/16	3-¼	10095	25	18
	42.5	9313-EWK	Ears, wing brackets, Speed Klamps™- factory installed	2-7/8	5-15/16	3-¼	10094	25	17

All dimensions are in inches unless otherwise noted.
See page 7 for Attachment Coding suffix descriptions.

Old Work/Manufactured Housing Boxes

Flush-Device Box
UL File No. E30594

fiberglassBOX™ Four Gang Residential Switch or Receptacle Box



4300-2Z2K



4300-Z2K



4300-Z2BK



4304-Z4BK

	Cu. In. Volume	Catalog Number	Component Description	Exterior Dimensions			UPC# 85339	Std. Pkg. Qty.	Std. Wt. (lb.)
				D	W	H			
"Z" Hanger	60.0	4300-2Z2	¼" offset, "Z" hanger each side of box, Speed Klamps™ - bulk packed	3	7-½	3-¾	16905	12	15
	60.0	4300-2Z2K	¼" offset, "Z" hanger each side of box, Speed Klamps™ - factory installed	3	7-½	3-¾	16907	12	15
	60.0	4300-Z2	¼" offset, "Z" hanger, Speed Klamps™ - bulk packed	3	7-½	3-¾	16725	12	14
	60.0	4300-Z2K	¼" offset, "Z" hanger, Speed Klamps™ - factory installed	3	7-½	3-¾	16906	12	14
	60.0	4300-Z4	½" offset, "Z" hanger, Speed Klamps™ - bulk packed	3	7-½	3-¾	18265	12	15
	60.0	4300-Z4K	½" offset, "Z" hanger, Speed Klamps™ - factory installed	3	7-½	3-¾	17312	12	22
	75.0	4304-2Z4	½" offset, "Z" hanger each side of box, Speed Klamps™ - bulk packed	3-9/16	7-½	3-¾	17560	12	17
	75.0	4304-2Z4K	½" offset, "Z" hanger each side of box, Speed Klamps™ - factory installed	3-9/16	7-½	3-¾	17561	12	17

	Cu. In. Volume	Catalog Number	Component Description	Exterior Dimensions			UPC# 85339	Std. Pkg. Qty.	Std. Wt. (lb.)
				D	W	H			
"Z" Hanger with Bar	60.0	4300-Z2B	¼" offset, "Z" hanger, adjustable stabilizing bar, Speed Klamps™ - bulk packed	3	7-½	3-¾	16770	6	9
	60.0	4300-Z2BK	¼" offset, "Z" hanger, adjustable stabilizing bar, Speed Klamps™ - factory installed	3	7-½	3-¾	16771	6	9
	75.0	4304-Z4B	½" offset, "Z" hanger, adjustable stabilizing bar, Speed Klamps™ - bulk packed	3-9/16	7-½	3-¾	17554	6	10
	75.0	4304-Z4BK	½" offset, "Z" hanger, adjustable stabilizing bar, Speed Klamps™ - factory installed	3-9/16	7-½	3-¾	17555	6	10



LVP-1



9314-EWK

Low Voltage Partition	Catalog Number	Component Description	UPC# 85339	Std. Pkg. Qty.	Std. Wt. (lb.)
	LVP-1	Low voltage divider plate for use with 2302, 3303, 4304, 5305 Series and 9314 only. See 2008 NEC 800.133(A)(1)(c).	80000	50*	3

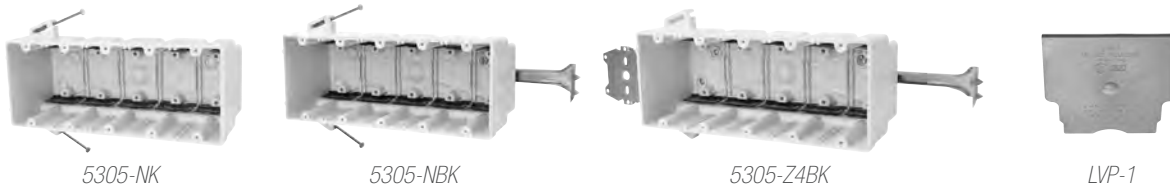
* Consists of ten (10) packages of five (5) pieces each.

Ears w/ Wing Brackets	Cu. In. Volume	Catalog Number	Component Description	Exterior Dimensions			UPC# 85339	Std. Pkg. Qty.	Std. Wt. (lb.)
				D	W	H			
	70.0	9314-EWK	Ears, wing brackets, ½" knockouts, Speed Klamps™- factory installed	3-9/16	7-11/16	3-¾	31800	6	8

All dimensions are in inches unless otherwise noted.
See page 7 for Attachment Coding suffix descriptions.

Old Work/Manufactured Housing Boxes

Flush-Device Box
UL File No. E30594



	Cu. In. Volume	Catalog Number	Component Description	Exterior Dimensions			UPC# 85339	Std. Pkg. Qty.	Std. Wt. (lb.)
				D	W	H			
Nail-On	94.0	5305-NK	Angled mid-nails, Speed Klamps™ - factory installed	3-9/16	9-5/16	3-3/4	18001	6	9
Nail-On with Bar	94.0	5305-NBK	Angled mid-nails, adjustable stabilizing bar, Speed Klamps™ - factory installed	3-9/16	9-5/16	3-3/4	18002	6	10
"Z" Hanger with Bar	94.0	5305-Z4BK	1/2" offset, "Z" hanger, adjustable stabilizing bar, Speed Klamps™ - factory installed	3-9/16	9-5/16	3-3/4	18003	6	12
Low Voltage Partition		Catalog Number	Component Description				UPC# 85339	Std. Pkg. Qty.	Std. Wt. (lb.)
		LVP-1	Low voltage divider plate for use with 2302, 3303, 4304, 5305 Series and 9314 only. See 2008 NEC 800.133(A)(1)(c).				80000	50*	3

* Consists of ten (10) packages of five (5) pieces each.

All dimensions are in inches unless otherwise noted.
See page 7 for Attachment Coding suffix descriptions.

 Flush-Device
Box
UL File No. E30594

Structured Cable/Low Voltage

Single Gang Boxes, Low Voltage Partitions, Plaster Rings



ALLIED
MOULDED
PRODUCTS, Inc.



LVBOW-1



LVB-1



LVPR-1



LVP-1



LVP-2

Structured Cable/Low Voltage

Catalog Number	Component Description	Exterior Dimensions			UPC# 85339	Std. Pkg. Qty.	Std. Wt. (lb.)
		D	W	H			
LVBOW-1	Single gang, old work, structured cable box with ears and wings	3-1/16	2-5/16	3-11/16	80003	24	5
LVB-1	Single gang, angled mid-nails, structured cable box	2-3/4	2-1/4	3-3/4	80002	48	9
LVPR-1	Single gang plaster ring, 1/2" offset, structured cable bracket for steel or wood stud face mounting	5/8	4	4	80001	50	4
LVP-1	Low voltage divider plate for use with fiberglassBOX™ series 2302, 3303, 4304, 5305, and 9314 only	3/32	3-5/16	3-3/4	80000	50*	3
LVP-2	Low voltage divider plate for use with SLIDERBOX® series SB-2, SB-3, and SB-4; and flexBOX® part numbers P-442, P-442QT, P-643, P-643QT, P-764, P-764QT, P-764B, P-764H, P-764HBQT, P-2400W, and P-3520W	3-32	3-1/16	3-1/2	80005	50*	3

* Consists of ten (10) packages of five (5) pieces each.

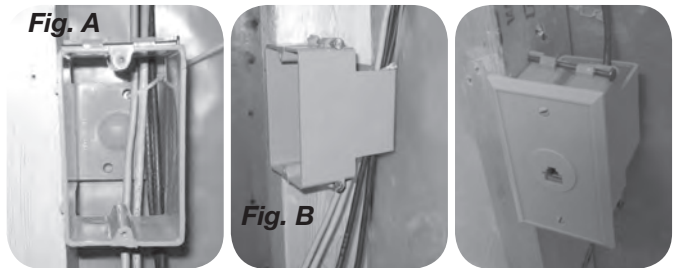
LVBOW-1 Features and Benefits

- Old work structured cable box
- Sturdy construction with “box-like” strength and rigidity
- Molded thread device holes provide for secure mounting of structured cable devices and cover plates
- Eliminates the need to modify single gang outlet boxes
- Open back design for generous cable bend radius
- Holes in back section provide a means to secure the cable allowing cable accessibility later (Fig. A)
- U.S. Patents D531,128 and 7,179,994



LVB-1 Features and Benefits

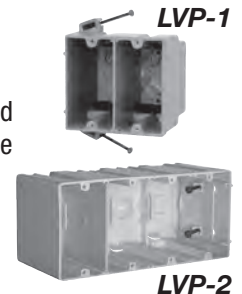
- New work structured cable box
- Sturdy construction with “box-like” strength and rigidity
- Eliminates need to modify single gang box
- Open back for generous cable bend radius
- Easy nail-on mounting design
- Holes on back provide a means to wire tie the cable allowing cable accessibility later (Fig. A)
- Open back channel to store and protect cable during drywall phase (Fig. B)
- US Patents D531,128 and 7,179,994



LVP-1/LVP-2 Features and Benefits

- Separates line and low voltage within the same electrical box
- Use LVP-1 with Allied Moulded’s deep series 2302, 3303, 4304, 5305, and 9314 fiberglass boxes
- Use LVP-2 with Allied Moulded’s flexBOX® products and SLIDERBOX® products (see chart above for specific part numbers)
- Allows for a reduced number of wall box installations
- Fast, easy and convenient to install

- Complies with article 800.133(A)(1)(c) from 2008 NEC
- For low voltage applications in fire rated walls, utilize the LVP-1 partition with the Allied Moulded deep series fiberglass wall boxes which carry the industry exclusive rating for reduced horizontal separation in the same stud cavity



All dimensions are in inches unless otherwise noted.

Old Work/Manufactured Housing Boxes



UL File No. E245435 - Boxes
UL File No. E30594 - Partitions