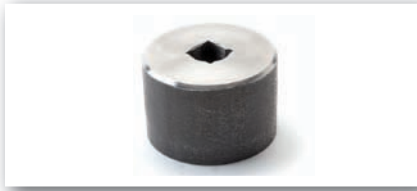


Spin-It



With the Plasti-Bond **Spin-It**, Plasti-Bond REDH₂OT can be tightened much faster than with conventional tools. Because the **Spin-It** never touches the coating, damage to the conduit is eliminated.

| CATALOG # | DESCRIPTION |
|-----------------|----------------|
| SPSPIN-IT-3/4 | 3/4" Spin-It |
| SPSPIN-IT-1 | 1" Spin-It |
| SPSPIN-IT-1-1/4 | 1-1/4" Spin-It |
| SPSPIN-IT-1-1/2 | 1-1/2" Spin-It |
| SPSPIN-IT-2 | 2" Spin-It |

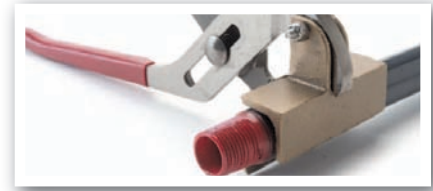
Plasti-Socket



Plasti-Socket is a fiber-glass encapsulated 3/8" drive socket for use with the square fiberglass encapsulated U bolt and beam clamp nuts used in the Plasti-Bond RED-H₂OT conduit support system. The **Plasti-Socket** helps avoid coating damage from metal sockets, pliers or wrenches.

| CATALOG # | DESCRIPTION |
|--------------------|--------------------|
| PSPLASTISOCKET-3/8 | 3/8" Plasti-Socket |

Z-Wrench



Z-Wrench features extra wide jaws which spread the clamping force, enabling the tool to grip without marring the surface of the conduit. The "V" shaped upper jaw allows **Z-Wrench** to accommodate a wide range of conduit sizes. Shallow grooves in the upper and lower jaws provide an excellent grip.

| CATALOG # | DESCRIPTION |
|-----------|--------------------------|
| SPJPZ1 | 1/2" - 1-1/4" Z-Wrench |
| SPJPZ2 | 1-1/2" - 2-1/2" Z-Wrench |

JAWS 3



JAWS 3 are a set of aluminum-nickel-bronze vise jaws designed to replace the regular jaws in a RIGID #23 or #40-A pipe vise. They completely protect the exterior coating from damage caused by the vise jaws when cutting or threading.

| CATALOG # | DESCRIPTION |
|---------------|------------------------------|
| JWJAWS3-#23 | JAWS3 #23 Pipe Vise |
| JWJAWS3-#40-A | JAWS3 #40-A Tripod Pipe Vise |

Half Shell Clamps



Half Shell Clamps are designed to cover a large surface area when clamping conduit, especially in a chain vise. This allows for a strong grip without damaging the exterior coating.

| CATALOG # | DESCRIPTION |
|--------------------|---------------------------------|
| JWHLF-SHL-CLP2 | 2" Half-Shell Conduit Clamp |
| JWHLF-SHL-CLP2-1/2 | 2-1/2" Half-Shell Conduit Clamp |
| JWHLF-SHL-CLP3 | 3" Half-Shell Conduit Clamp |
| JWHLF-SHL-CLP3-1/2 | 3-1/2" Half-Shell Conduit Clamp |
| JWHLF-SHL-CLP4 | 4" Half-Shell Conduit Clamp |
| JWHLF-SHL-CLP5 | 5" Half-Shell Conduit Clamp |
| JWHLF-SHL-CLP6 | 6" Half-Shell Conduit Clamp |

Hickey



The **Plasti-Bond Hickey** is a special bending tool with a 40 mil PVC coating which reduces the possibility of damage during conduit bending.

| CATALOG # | DESCRIPTION |
|-----------|----------------------------|
| PBHICKEY | 1/2" & 3/4" Conduit Bender |

Touch Up & Repair Compounds

Plasti-Bond REDH₂OT Touchup Compounds are available to repair minor damage to the exterior PVC factory coating. The exterior PVC touchup compound is gray and available in a 12 oz. aerosol can, and a pint can with brush-top applicator.

The approved thread compound touchup compound is available in a pint can with a brush-top applicator.

See the installation section of the buyers' guide for more information on using the Plasti-Bond touchup compounds.



PLASTI-BOND TOUCH UP COMPOUNDS

| CATALOG # | DESCRIPTION | SIZE |
|-------------------|---|--------|
| PBTOUCHUP-SPRAY | Exterior Spray Type (Gray) | 12 oz. |
| PBTOUCHUP-GRAY-PT | Exterior Non-Spray with Brush-Top (Gray) | 1 pt. |
| PBTHREAD-COMPOUND | Approved Conductive Compound-Brush-Top Pint | 1 pt. |



The PVC-Coating Repair Kit is a UL recognized two part epoxy capable of bonding to PVC and steel or aluminum substrates. It includes all necessary tools in order to repair the damaged area and is dark grey in color.

PVC-COATING REPAIR KIT

| CATALOG # | DESCRIPTION |
|-----------------|------------------------|
| PBPVCREPAIR-KIT | PVC-Coating Repair Kit |

Spin-It



With the Plasti-Bond **Spin-It**, Plasti-Bond REDH₂OT can be tightened much faster than with conventional tools. Because the **Spin-It** never touches the coating, damage to the conduit is eliminated.

| CATALOG # | DESCRIPTION |
|-----------------|----------------|
| SPSPIN-IT-3/4 | 3/4" Spin-It |
| SPSPIN-IT-1 | 1" Spin-It |
| SPSPIN-IT-1-1/4 | 1-1/4" Spin-It |
| SPSPIN-IT-1-1/2 | 1-1/2" Spin-It |
| SPSPIN-IT-2 | 2" Spin-It |

Plasti-Socket



Plasti-Socket is a fiber-glass encapsulated 3/8" drive socket for use with the square fiberglass encapsulated U bolt and beam clamp nuts used in the Plasti-Bond RED-H₂OT conduit support system. The **Plasti-Socket** helps avoid coating damage from metal sockets, pliers or wrenches.

| CATALOG # | DESCRIPTION |
|--------------------|--------------------|
| PSPLASTISOCKET-3/8 | 3/8" Plasti-Socket |

Z-Wrench



Z-Wrench features extra wide jaws which spread the clamping force, enabling the tool to grip without marring the surface of the conduit. The "V" shaped upper jaw allows **Z-Wrench** to accommodate a wide range of conduit sizes. Shallow grooves in the upper and lower jaws provide an excellent grip.

| CATALOG # | DESCRIPTION |
|-----------|--------------------------|
| SPJPZ1 | 1/2" - 1-1/4" Z-Wrench |
| SPJPZ2 | 1-1/2" - 2-1/2" Z-Wrench |

JAWS 3



JAWS 3 are a set of aluminum-nickel-bronze vise jaws designed to replace the regular jaws in a RIGID #23 or #40-A pipe vise. They completely protect the exterior coating from damage caused by the vise jaws when cutting or threading.

| CATALOG # | DESCRIPTION |
|---------------|------------------------------|
| JWJAWS3-#23 | JAWS3 #23 Pipe Vise |
| JWJAWS3-#40-A | JAWS3 #40-A Tripod Pipe Vise |

Half Shell Clamps



Half Shell Clamps are designed to cover a large surface area when clamping conduit, especially in a chain vise. This allows for a strong grip without damaging the exterior coating.

| CATALOG # | DESCRIPTION |
|--------------------|---------------------------------|
| JWHLF-SHL-CLP2 | 2" Half-Shell Conduit Clamp |
| JWHLF-SHL-CLP2-1/2 | 2-1/2" Half-Shell Conduit Clamp |
| JWHLF-SHL-CLP3 | 3" Half-Shell Conduit Clamp |
| JWHLF-SHL-CLP3-1/2 | 3-1/2" Half-Shell Conduit Clamp |
| JWHLF-SHL-CLP4 | 4" Half-Shell Conduit Clamp |
| JWHLF-SHL-CLP5 | 5" Half-Shell Conduit Clamp |
| JWHLF-SHL-CLP6 | 6" Half-Shell Conduit Clamp |

Hickey



The **Plasti-Bond Hickey** is a special bending tool with a 40 mil PVC coating which reduces the possibility of damage during conduit bending.

| CATALOG # | DESCRIPTION |
|-----------|----------------------------|
| PBHICKEY | 1/2" & 3/4" Conduit Bender |

Touch Up & Repair Compounds

Plasti-Bond REDH₂OT Touchup Compounds are available to repair minor damage to the exterior PVC factory coating. The exterior PVC touchup compound is gray and available in a 12 oz. aerosol can, and a pint can with brush-top applicator.

The approved thread compound touchup compound is available in a pint can with a brush-top applicator.

See the installation section of the buyers' guide for more information on using the Plasti-Bond touchup compounds.



PLASTI-BOND TOUCH UP COMPOUNDS

| CATALOG # | DESCRIPTION | SIZE |
|-------------------|---|--------|
| PBTOUCHUP-SPRAY | Exterior Spray Type (Gray) | 12 oz. |
| PBTOUCHUP-GRAY-PT | Exterior Non-Spray with Brush-Top (Gray) | 1 pt. |
| PBTHREAD-COMPOUND | Approved Conductive Compound-Brush-Top Pint | 1 pt. |



The PVC-Coating Repair Kit is a UL recognized two part epoxy capable of bonding to PVC and steel or aluminum substrates. It includes all necessary tools in order to repair the damaged area and is dark grey in color.

PVC-COATING REPAIR KIT

| CATALOG # | DESCRIPTION |
|-----------------|------------------------|
| PBPVCREPAIR-KIT | PVC-Coating Repair Kit |