



Pool & Spa: Junction Boxes

PJB4175 | Pool/Spa Light Junction Box



PJB4175

POOL/SPA LIGHT JUNCTION BOX

These polymeric junction boxes are code compliant and provide safe, reliable connections for low-voltage lights.



Features & Applications

Features

- Accommodates flexible cords and non-metallic conduits from ½" to 1"
- Watertight, multifixture enclosure

Applications

- Pools
- Spas

- Easy access ground bar
 - PA114 Wall/Post Mounting Bracket (sold separately)
 - Complies with NEC Code 680.24 requirements for junction boxes
 - 1-year warranty
- Landscape Lighting

Specifications

Number of Light Connections

4

Other Certifications

NEC Code 680.24

Warranty

1-year

Related Accessories and Parts (1)



PA114

MOUNTING BRACKET FOR POOL/SPA LIGHT JUNCTION BOXES

Copyright © 2017 Intermatic Incorporated. All rights reserved.



Pool & Spa: Junction Boxes

PJB4175 | Pool/Spa Light Junction Box



PJB4175

POOL/SPA LIGHT JUNCTION BOX

These polymeric junction boxes are code compliant and provide safe, reliable connections for low-voltage lights.



Features & Applications

Features

- Accommodates flexible cords and non-metallic conduits from ½" to 1"
- Watertight, multifixture enclosure

Applications

- Pools
- Spas

- Easy access ground bar
 - PA114 Wall/Post Mounting Bracket (sold separately)
 - Complies with NEC Code 680.24 requirements for junction boxes
 - 1-year warranty
- Landscape Lighting

Specifications

Number of Light Connections

4

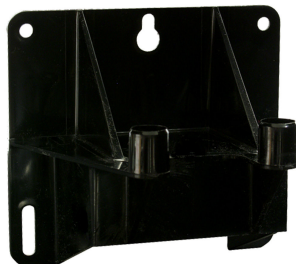
Other Certifications

NEC Code 680.24

Warranty

1-year

Related Accessories and Parts (1)



PA114

MOUNTING BRACKET FOR POOL/SPA LIGHT JUNCTION BOXES

Copyright © 2017 Intermatic Incorporated. All rights reserved.