

Class H & K Fuse Holders - 250/600 Volt

Specifications:

- Approved for 10,000 Amp Withstand Rating and Short Circuit Current Ratings (SCCR)
- UL Listed File No. IZLT.E35113
- CSA Certified File No. LR21455
- CE
- RoHS Compliant

30 & 60 Amp

- Clip, Copper Alloy, Tin Plated
- Patented Cool-Clip® Design

200 Amp

- Clip, One Piece Aluminum, Tin Plated

100 Amp

- Clip, Copper Alloy, Tin Plated

400 & 600 Amp

- Clip, Copper Alloy, Tin Plated

250 Volts - Catalog #:

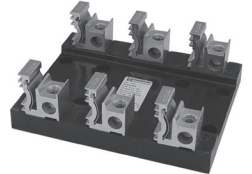
Replace "X" with # of poles

Standard	Reinforced	Poles (X)	Amps	Base Materials	Wire Range	Fuse Size	Fuses
F30AXS	RF30AXS	1/2/3	30	Thermoplastic	#10-#22 AWG CU	9/16" DIA BY 2"	A2Y
F30AXSP	RF30AXSP				#10-#14 AWG CU		CRN
F30AXB	RF30AXB				#6-#14 AWG CU	NLN	
F60AXSQ*	RF60AXSQ*				#10-#22 AWG CU	NON	
F60AXB	RF60AXB	60	60	Thermoplastic	#2-#14 AWG CU #2-#12 AWG AL	13/16" DIA BY 3"	NRN
RF100AXB	SAME				100	Phenolic	2/0-#14 AWG CU 2/0-#12 AWG AL
F200AXBE		200	Polyester	250 kcmil - #6 AWG CU AL	1 1/2" DIA BY 7 1/8"	OTN	
RF400AXB		400	Phenolic	400	(2) 350 kcmil - 1/0 AWG CU AL	2 13/32" DIA BY 8 5/8"	RLN
F600AXB	N/A	600			(2) 500 kcmil - 1/0 AWG CU AL	2 29/32" DIA BY 10 3/8"	RF

*UL Recognized File No. IZLT2.E35113



F30A3SP



F200A3BE

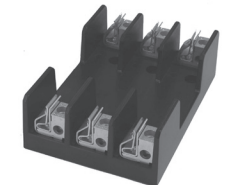
600 Volts - Catalog #:

Replace "X" with # of poles

Standard	Reinforced	Poles (X)	Amps	Base Materials	Wire Range	Fuse Size	Fuses
6F30AXS	R6F30AXS	1/2/3	30	Phenolic	#10-#22 AWG CU	13/16" DIA BY 5"	A6Y
6F30AXSP	R6F30AXSP				#10-#14 AWG CU		CRS
6F30AXB	R6F30AXB				#6-#14 AWG CU	NLS	
6F60AXB	R6F60AXB	60	60	Phenolic	#2-#14 AWG CU #2-#12 AWG AL	1 1/16" DIA BY 5 1/2"	NOS
R6F100AXB	SAME				100	Phenolic	2/0-#14 AWG CU 2/0-#12 AWG AL
6F200AXBE		200	Polyester	250 kcmil - #6 AWG CU AL	1 3/4" DIA BY 9 5/8"	OTS	
R6F400AXB		400	Phenolic	400	(2) 350 kcmil - 1/0 AWG CU AL	2 29/32" DIA BY 11 5/8"	RES
6F600AXB	N/A	600			(2) 500 kcmil - 1/0 AWG CU AL	3 7/16" DIA BY 13 3/8"	RFS
							RLS



6F30A3B



R6F100A3B

Contact Customer Service for Stud Options
See pages 13-15 for dimensional information

See pages 32-33 for available covers
See page 34 for DIN Rail Adapter

Marathon Special Products fuse holders will comply to new harmonized fuse holder standard 4248. Please refer to www.marathonsp.com for the latest updates.

General Information:

Marathon has been manufacturing quality fuse holders for over 40 years. The key word is quality. It is incorporated into every Marathon fuse holder, right along with design.

The product line includes a broad range of holders to accommodate the following fuses: Class H, K, R, T, J, CC, G, CD, M (Miscellaneous) and Semi-Conductor holders.

The majority of these fuse holders are available from 250 to 1000 volts at current ratings from 30 through 600 Amperes. Our Class M fuse holders and Semi Conductor fuse holders (Box and Stud versions) have a CE rating of 1000 Volts.

The Class R, T, J, CD, CC and Semi-Conductor fuse holders have passed 200,000 ampere high current interrupt testing in accordance with the fuse holder standard UL 512 (and will comply to new harmonized standard UL 4248 when effective).

Class R and CC fuse holders have a rejection feature, which prevents the insertion of a fuse with lower interrupting rating. Class T and J fuse holders prevent the use of fuses with lower interrupting rating because of their unique size.

Fuse Clips:

Marathon's 30 and 60 Amp fuse holders are equipped with the patented "Cool-Clip®" design. The heat generated in a fuse clip can actually reduce the life of the fuse, the clip and the conductor, as well as the protection power of the fusing device. No longer is it necessary for heat build-up to rob equipment of protection and extended life.

Reinforcing members are available for most Marathon fuse holders and are recommended for use where an improved performance is desired or more severe conditions exist. They are recommended for electric heat or where high ambient temperatures are present.

To comply with Automotive Industry Standard ET-2 use the following options:

- Class H Fuse Holder with Reinforcing Member
- 30 Amp use SP Connectors or Copper Box Connectors
- 60 Amp use Copper Box Connectors

Marathon Special Products fuse holders will comply to new harmonized fuse holder standard 4248. Please refer to www.marathonsp.com for the latest updates.

Wire Connectors:

Marathon fuse holders are available with five types of wire connectors.

S Screw Connector

An economical connector for use with a wire, or either a ring or spade type terminal. Screw is #10-32 steel.

SQ Screw Connector w/Quick Connects

Same as screw connector with additional quick connect options.

SP Sems Pressure Connector

A positive pressure connector eliminating the need for a wire terminal. Ideal for use where there is a vibration problem. Sems pressure screw is #10-32 steel.

SPQ Sems Pressure Connector w/Quick Connects

Same as Sems connector with additional quick connect options.

B Box Connector

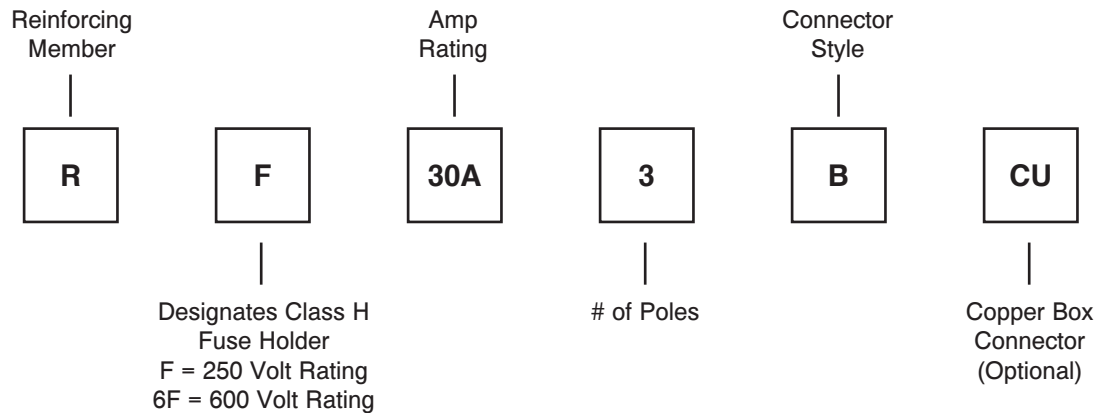
Suitable for use with stranded or solid wire. Connector is aluminum tin plated.

Copper Box Connectors are available on 30 and 60 amp fuse holders. Add CU after the catalog number.

Wire Ranges:

All wire ranges shown in the fuse holder section are the ranges of the wire that the connector will accept or that is recommended for the fuse holder assembly.

Ordering Code:



Applications:

Marathon fuse holders can be used in various applications, including control panels, lighting and heating circuits, motor circuits, circuit breaker protection, switchgear equipment, appliances, electric heat, air conditioning and refrigeration equipment, elevator systems and transformer protection.

Marathon Special Products fuse holders will comply to new harmonized fuse holder standard 4248. Please refer to www.marathonsp.com for the latest updates.

Class H & K Fuse Panels

30 and 60 Amp - 250 Volt

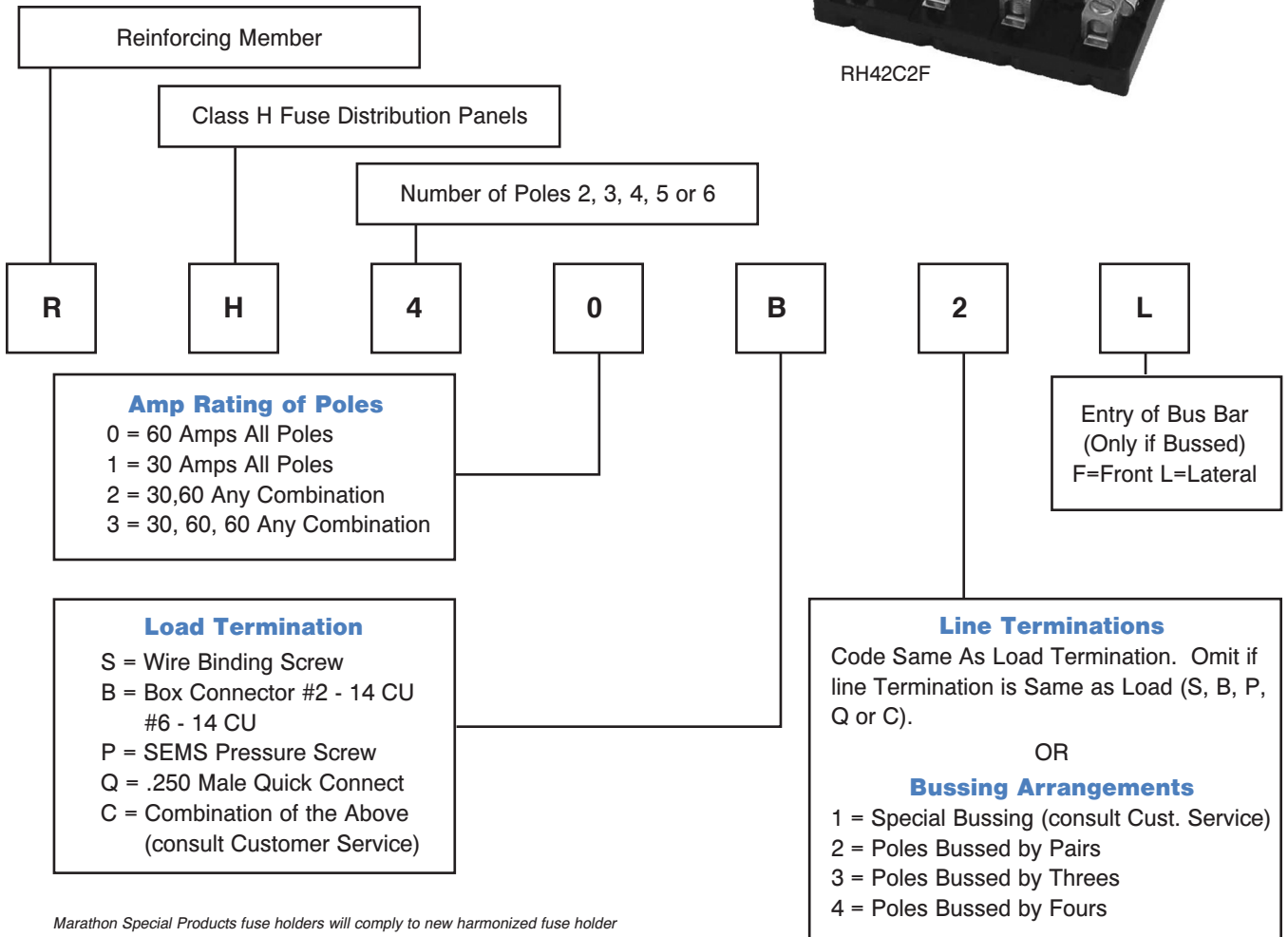
Specifications:

- Base, General Purpose Phenolic, 150°C
- Patented Cool-Clip® Design
- Clip, Copper Alloy, Tin Plated
- Reinforcing Member Available
- Bus Bars are Available with 2/0 - #14 AWG or 250 kcmil - #6 Wire Ranges
- Consult Customer Service for Special Requirements
- UL Recognized File No. IZLT2.E35113
- CSA Certified File No. LR21455
- **CE**
- RoHS Compliant



Fuse Holders

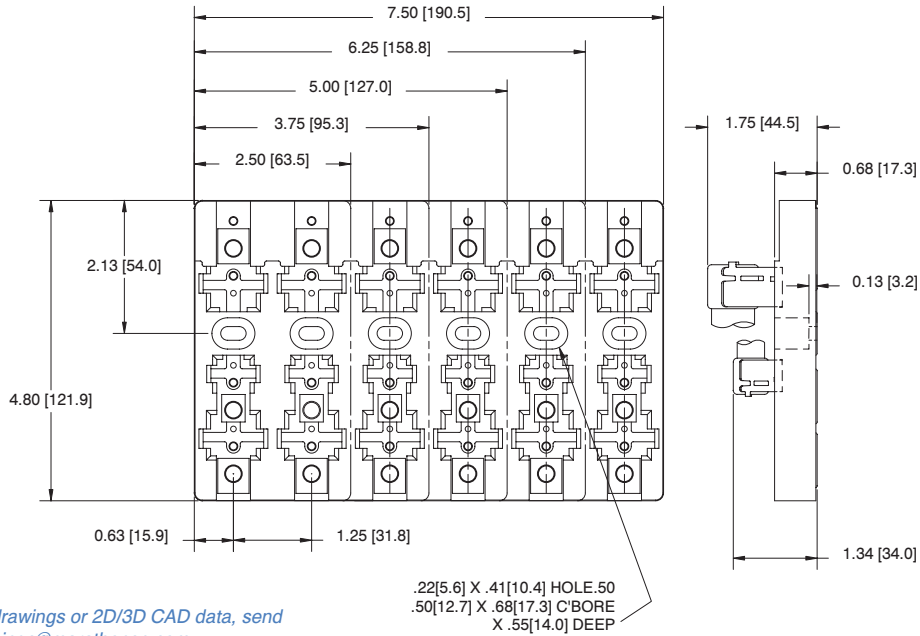
Ordering Code:



Marathon Special Products fuse holders will comply to new harmonized fuse holder standard 4248. Please refer to www.marathonsp.com for the latest updates.

Class H & K Fuse Panels (cont.)

30 and 60 Amp - 250 Volt



For electronic drawings or 2D/3D CAD data, send request to drawings@marathonsp.com

Poles No.	Dimensions (in) L	(mm)	Poles No.	Dimensions (in) L	(mm)	Dimensions (in)	Dimensions (mm)
2	2.50	63.5	5	6.25	158.8	(in)	
3	3.75	95.25	6	7.50	190.5	(mm)	
4	5.00	127.0					

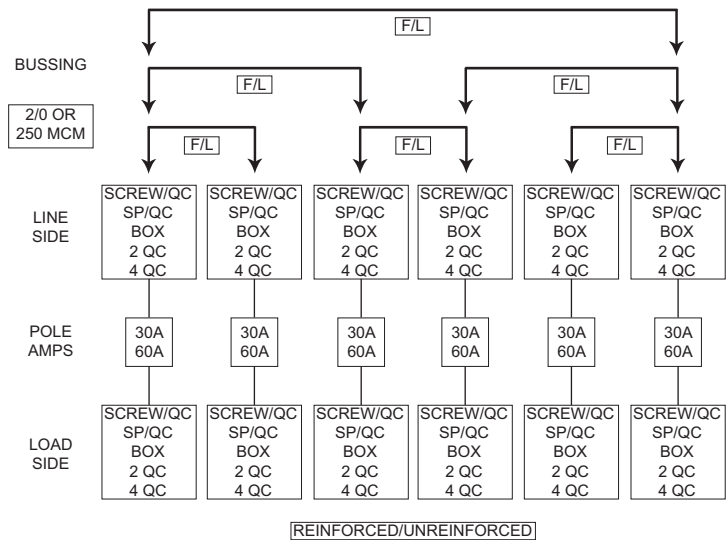
Fuse Distribution Panel Options

Circle/indicate one item per pole and number of poles. The items to be indicated are within the rectangles.

Bussing is only available on line side. If bussing, indicate lug size 2/0 or 250 kcmil (F = Front entry, L = Lateral entry)

Consult Customer Service for other modifications.

Marathon Special Products fuse holders will comply to new harmonized fuse holder standard 4248. Please refer to www.marathonsp.com for the latest updates.



Class H & K Fuse Holders - 250/600 Volt

Specifications:

- Approved for 10,000 Amp Withstand Rating and Short Circuit Current Ratings (SCCR)
- UL Listed File No. IZLT.E35113
- CSA Certified File No. LR21455
- CE
- RoHS Compliant

30 & 60 Amp

- Clip, Copper Alloy, Tin Plated
- Patented Cool-Clip® Design

200 Amp

- Clip, One Piece Aluminum, Tin Plated

100 Amp

- Clip, Copper Alloy, Tin Plated

400 & 600 Amp

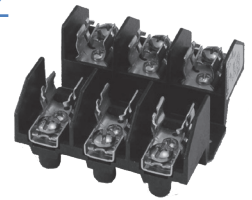
- Clip, Copper Alloy, Tin Plated

250 Volts - Catalog #:

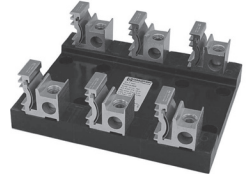
Replace "X" with # of poles

Standard	Reinforced	Poles (X)	Amps	Base Materials	Wire Range	Fuse Size	Fuses
F30AXS	RF30AXS	1/2/3	30	Thermoplastic	#10-#22 AWG CU	9/16" DIA BY 2"	A2Y CRN NLN NON NRN OT OTN RLN RF
F30AXSP	RF30AXSP				#10-#14 AWG CU		
F30AXB	RF30AXB				#6-#14 AWG CU		
F60AXSQ*	RF60AXSQ*				#10-#22 AWG CU		
F60AXB	RF60AXB	1/3	60	Phenolic	#2-#14 AWG CU #2-#12 AWG AL	13/16" DIA BY 3"	
RF100AXB	SAME				100	Phenolic	2/0-#14 AWG CU 2/0-#12 AWG AL
F200AXBE		200	Polyester	250 kcmil - #6 AWG CU AL	1 1/2" DIA BY 7 1/8"		
RF400AXB		400	Phenolic	(2) 350 kcmil - 1/0 AWG CU AL	2 13/32" DIA BY 8 5/8"		
F600AXB	N/A	600		(2) 500 kcmil - 1/0 AWG CU AL	2 29/32" DIA BY 10 3/8"		

*UL Recognized File No. IZLT2.E35113



F30A3SP



F200A3BE

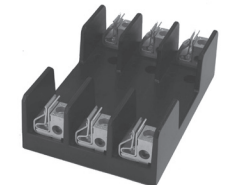
600 Volts - Catalog #:

Replace "X" with # of poles

Standard	Reinforced	Poles (X)	Amps	Base Materials	Wire Range	Fuse Size	Fuses
6F30AXS	R6F30AXS	1/2/3	30	Phenolic	#10-#22 AWG CU	13/16" DIA BY 5"	A6Y CRS NLS NOS NRS OTS RES RFS RLS
6F30AXSP	R6F30AXSP				#10-#14 AWG CU		
6F30AXB	R6F30AXB				#6-#14 AWG CU		
6F60AXB	R6F60AXB				#2-#14 AWG CU #2-#12 AWG AL		
R6F100AXB	SAME	1/3	100	Phenolic	2/0-#14 AWG CU 2/0-#12 AWG AL	1 11/32" DIA BY 7 7/8"	
6F200AXBE					200	Polyester	250 kcmil - #6 AWG CU AL
R6F400AXB		400	Phenolic	(2) 350 kcmil - 1/0 AWG CU AL	2 29/32" DIA BY 11 5/8"		
6F600AXB	N/A	600		(2) 500 kcmil - 1/0 AWG CU AL	3 7/16" DIA BY 13 3/8"		



6F30A3B



R6F100A3B

Contact Customer Service for Stud Options
See pages 13-15 for dimensional information

See pages 32-33 for available covers
See page 34 for DIN Rail Adapter

Marathon Special Products fuse holders will comply to new harmonized fuse holder standard 4248. Please refer to www.marathonsp.com for the latest updates.

Class H & K Fuse Holders - 250/600 Volt

Specifications:

- Approved for 10,000 Amp Withstand Rating and Short Circuit Current Ratings (SCCR)
- UL Listed File No. IZLT.E35113
- CSA Certified File No. LR21455
- CE
- RoHS Compliant

30 & 60 Amp

- Clip, Copper Alloy, Tin Plated
- Patented Cool-Clip® Design

200 Amp

- Clip, One Piece Aluminum, Tin Plated

100 Amp

- Clip, Copper Alloy, Tin Plated

400 & 600 Amp

- Clip, Copper Alloy, Tin Plated

250 Volts - Catalog #:

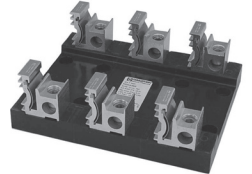
Replace "X" with # of poles

Standard	Reinforced	Poles (X)	Amps	Base Materials	Wire Range	Fuse Size	Fuses
F30AXS	RF30AXS	1/2/3	30	Thermoplastic	#10-#22 AWG CU	9/16" DIA BY 2"	A2Y
F30AXSP	RF30AXSP				#10-#14 AWG CU		CRN
F30AXB	RF30AXB				#6-#14 AWG CU	NLN	
F60AXSQ*	RF60AXSQ*				#10-#22 AWG CU	NON	
F60AXB	RF60AXB	60	60	Thermoplastic	#2-#14 AWG CU #2-#12 AWG AL	13/16" DIA BY 3"	NRN
RF100AXB	SAME				100	Phenolic	2/0-#14 AWG CU 2/0-#12 AWG AL
F200AXBE		200	Polyester	250 kcmil - #6 AWG CU AL	1 1/2" DIA BY 7 1/8"	OTN	
RF400AXB		400	Phenolic	400	(2) 350 kcmil - 1/0 AWG CU AL	2 13/32" DIA BY 8 5/8"	RLN
F600AXB	N/A	600			(2) 500 kcmil - 1/0 AWG CU AL	2 29/32" DIA BY 10 3/8"	RF

*UL Recognized File No. IZLT2.E35113



F30A3SP



F200A3BE

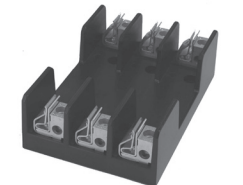
600 Volts - Catalog #:

Replace "X" with # of poles

Standard	Reinforced	Poles (X)	Amps	Base Materials	Wire Range	Fuse Size	Fuses
6F30AXS	R6F30AXS	1/2/3	30	Phenolic	#10-#22 AWG CU	13/16" DIA BY 5"	A6Y
6F30AXSP	R6F30AXSP				#10-#14 AWG CU		CRS
6F30AXB	R6F30AXB				#6-#14 AWG CU	NLS	
6F60AXB	R6F60AXB				60	#2-#14 AWG CU #2-#12 AWG AL	1 1/16" DIA BY 5 1/2"
R6F100AXB	SAME	100	100	Phenolic	2/0-#14 AWG CU 2/0-#12 AWG AL	1 11/32" DIA BY 7 7/8"	NRS
6F200AXBE					200	Polyester	250 kcmil - #6 AWG CU AL
R6F400AXB		400	Phenolic	400	(2) 350 kcmil - 1/0 AWG CU AL	2 29/32" DIA BY 11 5/8"	RES
6F600AXB	N/A	600			(2) 500 kcmil - 1/0 AWG CU AL	3 7/16" DIA BY 13 3/8"	RFS



6F30A3B



R6F100A3B

Contact Customer Service for Stud Options
See pages 13-15 for dimensional information

See pages 32-33 for available covers
See page 34 for DIN Rail Adapter

Marathon Special Products fuse holders will comply to new harmonized fuse holder standard 4248. Please refer to www.marathonsp.com for the latest updates.

General Information:

Marathon has been manufacturing quality fuse holders for over 40 years. The key word is quality. It is incorporated into every Marathon fuse holder, right along with design.

The product line includes a broad range of holders to accommodate the following fuses: Class H, K, R, T, J, CC, G, CD, M (Miscellaneous) and Semi-Conductor holders.

The majority of these fuse holders are available from 250 to 1000 volts at current ratings from 30 through 600 Amperes. Our Class M fuse holders and Semi Conductor fuse holders (Box and Stud versions) have a CE rating of 1000 Volts.

The Class R, T, J, CD, CC and Semi-Conductor fuse holders have passed 200,000 ampere high current interrupt testing in accordance with the fuse holder standard UL 512 (and will comply to new harmonized standard UL 4248 when effective).

Class R and CC fuse holders have a rejection feature, which prevents the insertion of a fuse with lower interrupting rating. Class T and J fuse holders prevent the use of fuses with lower interrupting rating because of their unique size.

Fuse Clips:

Marathon's 30 and 60 Amp fuse holders are equipped with the patented "Cool-Clip®" design. The heat generated in a fuse clip can actually reduce the life of the fuse, the clip and the conductor, as well as the protection power of the fusing device. No longer is it necessary for heat build-up to rob equipment of protection and extended life.

Reinforcing members are available for most Marathon fuse holders and are recommended for use where an improved performance is desired or more severe conditions exist. They are recommended for electric heat or where high ambient temperatures are present.

To comply with Automotive Industry Standard ET-2 use the following options:

- Class H Fuse Holder with Reinforcing Member
- 30 Amp use SP Connectors or Copper Box Connectors
- 60 Amp use Copper Box Connectors

Marathon Special Products fuse holders will comply to new harmonized fuse holder standard 4248. Please refer to www.marathonsp.com for the latest updates.

Wire Connectors:

Marathon fuse holders are available with five types of wire connectors.

S Screw Connector

An economical connector for use with a wire, or either a ring or spade type terminal. Screw is #10-32 steel.

SQ Screw Connector w/Quick Connects

Same as screw connector with additional quick connect options.

SP Sems Pressure Connector

A positive pressure connector eliminating the need for a wire terminal. Ideal for use where there is a vibration problem. Sems pressure screw is #10-32 steel.

SPQ Sems Pressure Connector w/Quick Connects

Same as Sems connector with additional quick connect options.

B Box Connector

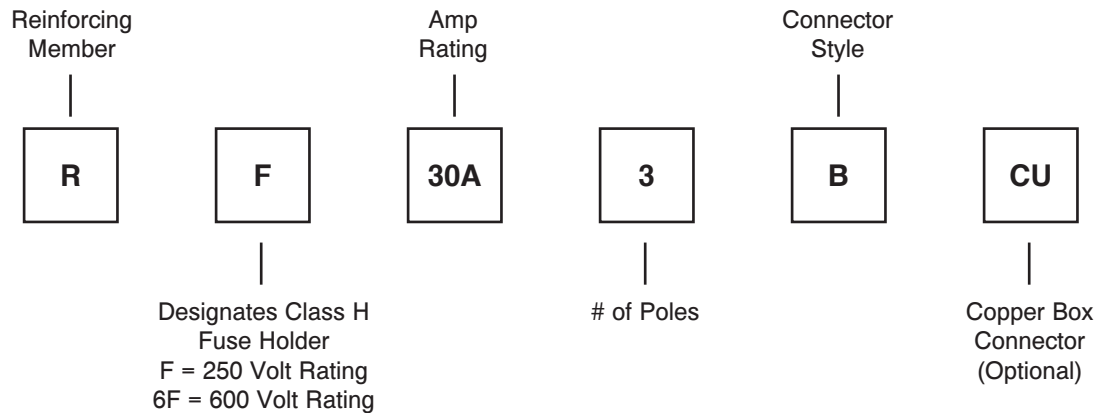
Suitable for use with stranded or solid wire. Connector is aluminum tin plated.

Copper Box Connectors are available on 30 and 60 amp fuse holders. Add CU after the catalog number.

Wire Ranges:

All wire ranges shown in the fuse holder section are the ranges of the wire that the connector will accept or that is recommended for the fuse holder assembly.

Ordering Code:



Applications:

Marathon fuse holders can be used in various applications, including control panels, lighting and heating circuits, motor circuits, circuit breaker protection, switchgear equipment, appliances, electric heat, air conditioning and refrigeration equipment, elevator systems and transformer protection.

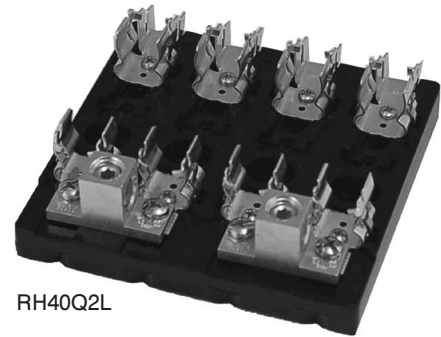
Marathon Special Products fuse holders will comply to new harmonized fuse holder standard 4248. Please refer to www.marathonsp.com for the latest updates.

Class H & K Fuse Panels

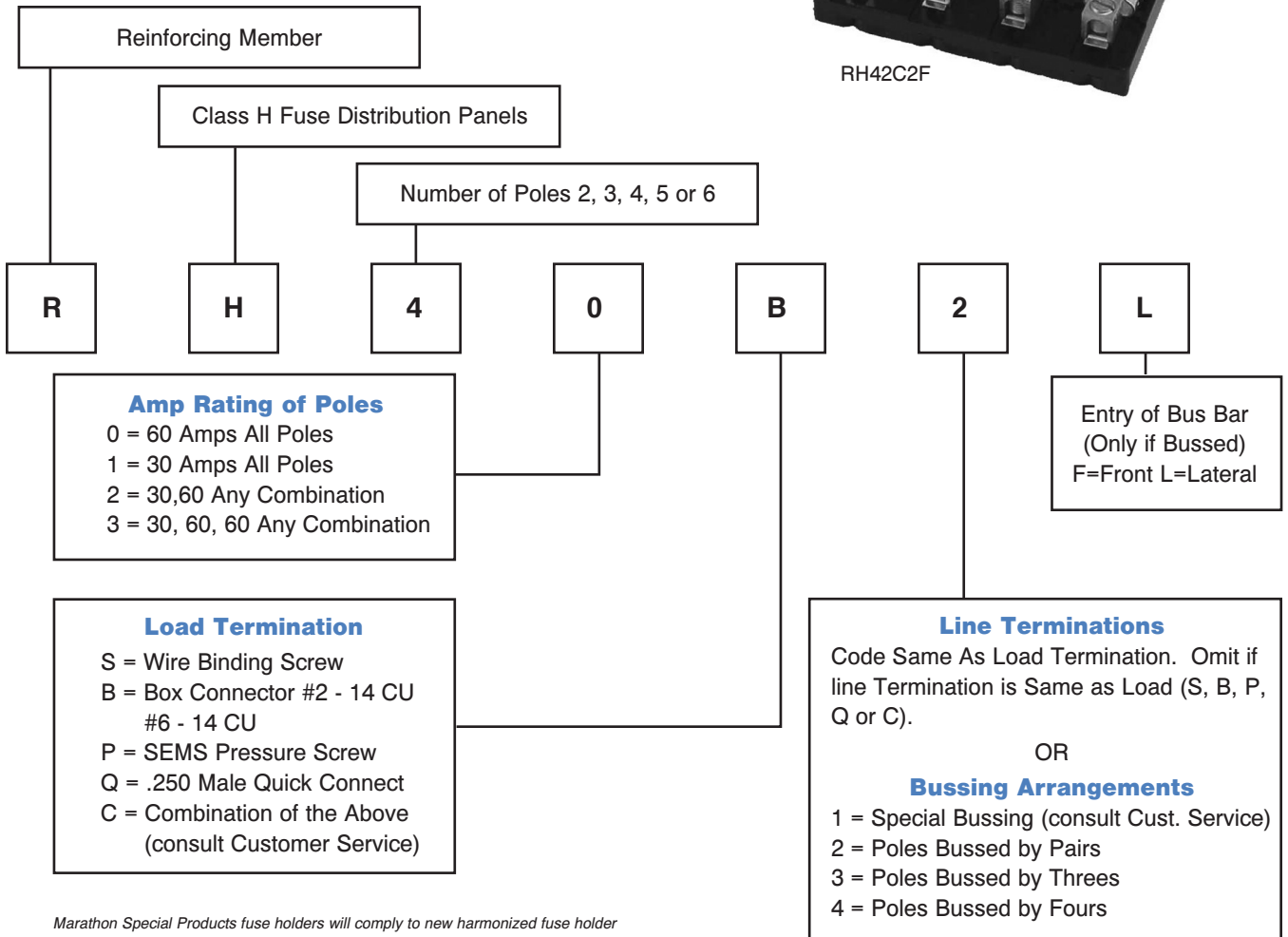
30 and 60 Amp - 250 Volt

Specifications:

- Base, General Purpose Phenolic, 150°C
- Patented Cool-Clip® Design
- Clip, Copper Alloy, Tin Plated
- Reinforcing Member Available
- Bus Bars are Available with 2/0 - #14 AWG or 250 kcmil - #6 Wire Ranges
- Consult Customer Service for Special Requirements
- UL Recognized File No. IZLT2.E35113
- CSA Certified File No. LR21455
- **CE**
- RoHS Compliant



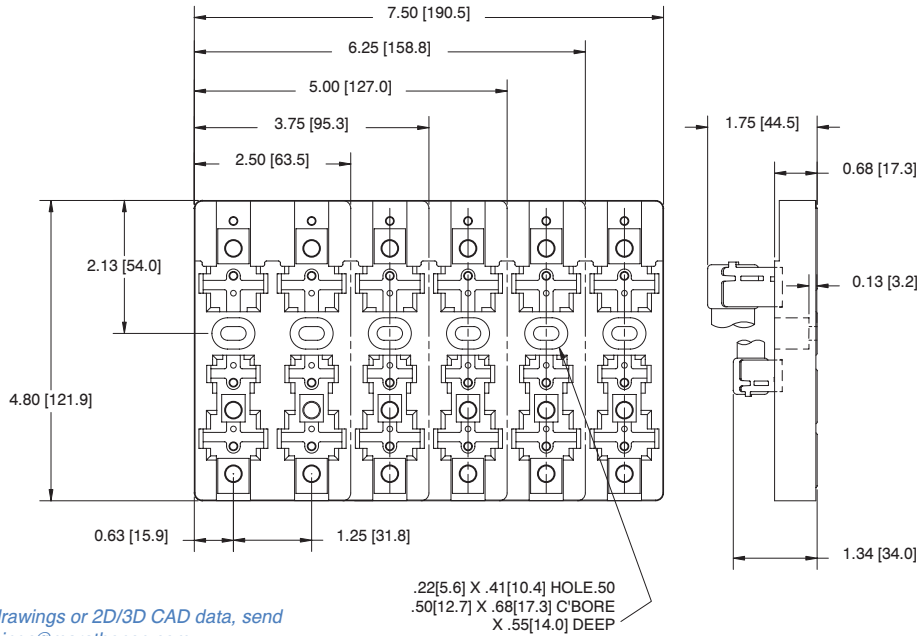
Ordering Code:



Marathon Special Products fuse holders will comply to new harmonized fuse holder standard 4248. Please refer to www.marathonsp.com for the latest updates.

Class H & K Fuse Panels (cont.)

30 and 60 Amp - 250 Volt



For electronic drawings or 2D/3D CAD data, send request to drawings@marathonsp.com

Poles No.	Dimensions (in) L	(mm)	Poles No.	Dimensions (in) L	(mm)	Dimensions (in) (mm)
2	2.50	63.5	5	6.25	158.8	(in) (mm)
3	3.75	95.25	6	7.50	190.5	(in) (mm)
4	5.00	127.0				

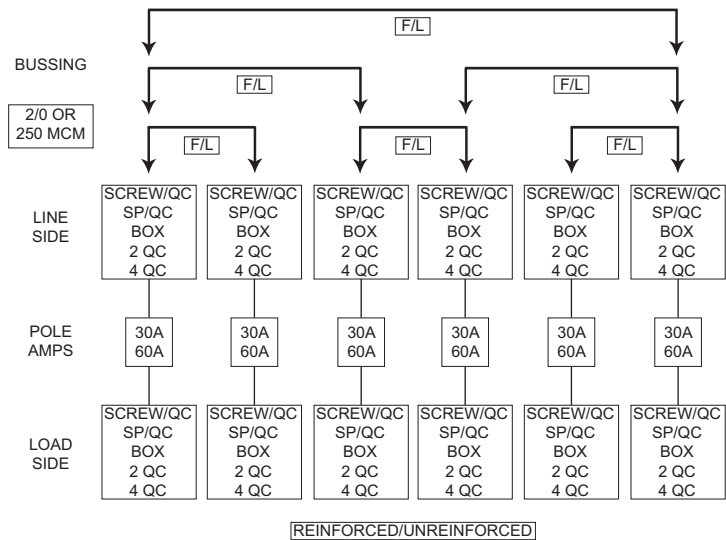
Fuse Distribution Panel Options

Circle/indicate one item per pole and number of poles. The items to be indicated are within the rectangles.

Bussing is only available on line side. If bussing, indicate lug size 2/0 or 250 kcmil (F = Front entry, L = Lateral entry)

Consult Customer Service for other modifications.

Marathon Special Products fuse holders will comply to new harmonized fuse holder standard 4248. Please refer to www.marathonsp.com for the latest updates.



Class H & K Fuse Holders - 250/600 Volt

Specifications:

- Approved for 10,000 Amp Withstand Rating and Short Circuit Current Ratings (SCCR)
- UL Listed File No. IZLT.E35113
- CSA Certified File No. LR21455
- **CE**
- RoHS Compliant

30 & 60 Amp

- Clip, Copper Alloy, Tin Plated
- Patented Cool-Clip® Design

200 Amp

- Clip, One Piece Aluminum, Tin Plated

100 Amp

- Clip, Copper Alloy, Tin Plated

400 & 600 Amp

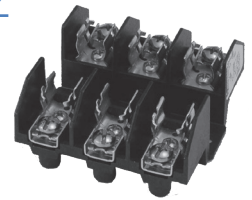
- Clip, Copper Alloy, Tin Plated

250 Volts - Catalog #:

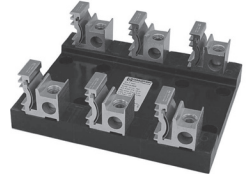
Replace "X" with # of poles

Standard	Reinforced	Poles (X)	Amps	Base Materials	Wire Range	Fuse Size	Fuses
F30AXS	RF30AXS	1/2/3	30	Thermoplastic	#10-#22 AWG CU	9/16" DIA BY 2"	A2Y CRN NLN NON NRN OT OTN RLN RF
F30AXSP	RF30AXSP				#10-#14 AWG CU		
F30AXB	RF30AXB				#6-#14 AWG CU		
F60AXSQ*	RF60AXSQ*				#10-#22 AWG CU		
F60AXB	RF60AXB	1/3	60	Phenolic	#2-#14 AWG CU #2-#12 AWG AL	13/16" DIA BY 3"	
RF100AXB	SAME				100	Phenolic	2/0-#14 AWG CU 2/0-#12 AWG AL
F200AXBE		200	Polyester	250 kcmil - #6 AWG CU AL	1 1/2" DIA BY 7 1/8"		
RF400AXB		400	Phenolic	(2) 350 kcmil - 1/0 AWG CU AL	2 13/32" DIA BY 8 5/8"		
F600AXB	N/A	600		(2) 500 kcmil - 1/0 AWG CU AL	2 29/32" DIA BY 10 3/8"		

*UL Recognized File No. IZLT2.E35113



F30A3SP



F200A3BE

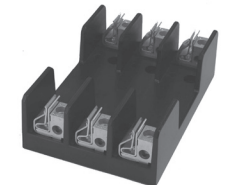
600 Volts - Catalog #:

Replace "X" with # of poles

Standard	Reinforced	Poles (X)	Amps	Base Materials	Wire Range	Fuse Size	Fuses
6F30AXS	R6F30AXS	1/2/3	30	Phenolic	#10-#22 AWG CU	13/16" DIA BY 5"	A6Y CRS NLS NOS NRS OTS RES RFS RLS
6F30AXSP	R6F30AXSP				#10-#14 AWG CU		
6F30AXB	R6F30AXB				#6-#14 AWG CU		
6F60AXB	R6F60AXB				#2-#14 AWG CU #2-#12 AWG AL		
R6F100AXB	SAME	1/3	100	Phenolic	2/0-#14 AWG CU 2/0-#12 AWG AL	1 11/32" DIA BY 7 7/8"	
6F200AXBE					200	Polyester	250 kcmil - #6 AWG CU AL
R6F400AXB		400	Phenolic	(2) 350 kcmil - 1/0 AWG CU AL	2 29/32" DIA BY 11 5/8"		
6F600AXB	N/A	600		(2) 500 kcmil - 1/0 AWG CU AL	3 7/16" DIA BY 13 3/8"		



6F30A3B



R6F100A3B

Contact Customer Service for Stud Options
See pages 13-15 for dimensional information

See pages 32-33 for available covers
See page 34 for DIN Rail Adapter

Marathon Special Products fuse holders will comply to new harmonized fuse holder standard 4248. Please refer to www.marathonsp.com for the latest updates.