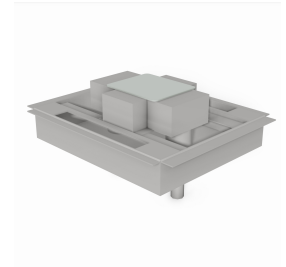




# REVIT CONTENT GUIDE

**Manufacturer:** Wiremold  
**File:** Floor\_Box-Resource\_Series-Wiremold-RFB2S-FC.rfa  
**Type Catalog:** Not Applicable  
**Rendering file:** Not Applicable  
**Schedule file:** Not Applicable



## Instance Properties

Construction	
Cover Plate*	Flange, Brass, FPFFTCBS
Electrical	
Apparent Load*	0.00 VA
Load Classification*	Other
Power Factor*	1.000000
Voltage*	0.00 V
Graphics	
Has Cover	<input checked="" type="checkbox"/>
Has Snap Locations*	<input checked="" type="checkbox"/>
Identity Data	
Equipment Number*	
Part Description*	Two-Compartment Multi-Service Recessed Floor Box, Fire Classified
Part Number*	RFB2S-FC

## Type Properties

The family contains the following 1 types:  
Standard (Values for this type are shown below)

Adsk Model Properties	
Box Capacity	2-Gang
Construction	
Installation Floor Type	Tile, Polished Concrete, Terrazzo, Carpet, Wood
Installation Location*	Above-Grade
Dimension	
Depth*	6.578
Height*	3.328
Width*	13.100

Identity Data	
Copyright*	Copyright © Wiremold
Date Last Modified*	December 19, 2013
Description	Two-Compartment Multi-Service Recessed Floor Box, Fire Classified
Equipment Abbreviation*	FB
Family Version*	1.0.0
Manufacturer	Wiremold
Model	RFB2S-FC
Model Disclaimer*	Contact Wiremold for more information
Original Creation Date*	December 19, 2013
Product Documentation Link*	<a href="http://www.legrand.us/~media/products/resources/wiremold-products/floor-boxes/commercial/steel-concrete-floor-boxes/fire-classified-floor-boxes/ED1559R2pdf.ashx">http://www.legrand.us/~media/products/resources/wiremold-products/floor-boxes/commercial/steel-concrete-floor-boxes/fire-classified-floor-boxes/ED1559R2pdf.ashx</a>
Product Page URL*	<a href="http://www.legrand.us/Wiremold/floor-boxes/concrete-floor-boxes/fcfb-fire-classified-floor-box/rfb2s-fc-two-compartment-floor-box.aspx">http://www.legrand.us/Wiremold/floor-boxes/concrete-floor-boxes/fcfb-fire-classified-floor-box/rfb2s-fc-two-compartment-floor-box.aspx</a>
Provide Feedback*	<a href="https://www.surveymonkey.com/s/BDXT5XT">https://www.surveymonkey.com/s/BDXT5XT</a>
Standard Equipment*	1 x Duplex Receptacle; 1 x Communication
URL	<a href="http://www.legrand.us/wiremold">http://www.legrand.us/wiremold</a>

#### Materials

Product Material*	Steel - Wiremold
-------------------	------------------

Half-tone text in the property tables indicates that the value is locked from editing.

\*Indicates Shared Parameter and can be scheduled

## Loading and Placing into the Project

One “Electrical Fixtures” family is supplied and can be loaded into a Revit project through all traditional methods. The Floor Box requires a work-plane host to be placed within the project (i.e. floor). Also, ensure that the visibility settings within the project are modified to have the Electrical Fixtures category visible. The box has the ability to cut its host to aid in device plate placement.

## Project Behavior

Within the type and instance properties dialogues, the user will find useful information for scheduling purposes such as Height, Width, Depth, Installation Floor Type and other unique properties of the model. In “Identity Data” the user will find information specific to Wiremold and the model, i.e.: family revision information, Wiremold copyright information, part description, product URL and other specific data. \*See scheduling description below. The floor box is intended to be used with device plate models that can be placed inside. The 'Has Cover' checkbox parameter will temporarily turn the cover off for placement. Half-tone crosshairs exist inside the box to assist in placement of face hosted elements (Device Plates). Compatible device plate families are available with corresponding filenames. During element placement, these crosshairs will give a snap-in-place behavior while hovering the cursor over them. The 'Has Snap Locations' checkbox will turn the visibility of these lines off once device placement is complete. Conduit may be drawn from any of the many connection points in the model. Empty electrical parameters exist for entering in electrical requirements. These parameters are mapped to the connection points.

## Instance Parameter

In the “Instance Parameters”, the user has the following options to modify:

Cover Plate - Selects the cover plate

Has Cover – Turns off the cover geometry for device plate placement.

Has Snap Locations – Turns off the device plate placement crosshairs.

## Type Parameter

Each type represents a manufactured product. Therefore, the type parameters should not be modified by the user. Please note:

Product Documentation Link – Directs a webpage to the products online listing.

Equipment Abbreviation – For filtering schedules. \*See scheduling description below.

Installation Location – Indicates grade level for installation.

Installation Floor Type – Depicts which floor finish the Floor Box is suitable for.

Box Capacity – Indicates the number of devices the box can support.

## Visibility

For best performance, all model geometry is turned off in Plan View and represented through masking regions and symbolic/model lines that update automatically when a user changes types. The instance parameter "Has Cover" is intended for temporary visibility status of the cover for device plate placement. If left unchecked, the floor box will not be visible in plan view.

## Rendering

When the family file is loaded into the project, standard Wiremold materials are imported. These may be modified, though ensure that the modification selection matches an actual manufacturer supplied option.

## Schedule Creation

Wiremold products may be scheduled utilizing the schedule view in the given project file. Select and copy (Ctrl-C) the schedule from the sheet view and paste it (Ctrl-V) into a sheet in your project. The schedule filters are set to look for only those units designated with Manufacturer as "Wiremold" and Equipment Abbreviation as "FB". The schedules contain special functionality for displaying the configured order numbers of the different selected types.