

CONNECTORS

Compression Connectors

Copper Splice Short Barrel

SC Series



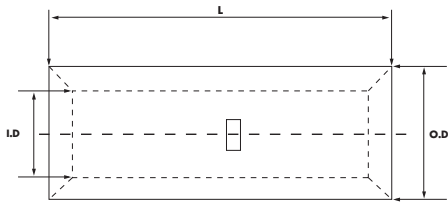
FEATURES

- Produced from high conductivity copper tubing.
- Serrations indicate proper crimp locations.
- Tin-plated to provide corrosion resistance.
- Marked with die index and color coded.
- Suitable for use at voltages up to 35KV provided connector is properly installed to cable manufacturer voltage stress relief instructions.
- 5KV is the maximum voltage in all bare splices.

SPECIFICATIONS

- UL486A Listed Wire Connector.
- UL467 Grounding & Bonding (Sizes 8 AWG - 3/0 AWG).
- cULus Listed 155027.
- Max ampacity is based on NEC 310.15, insulation type, and conductor material. Please consult your current NEC manual.
- * CLASS B OR C BUILDING WIRE CU CABLE ONLY
- **Temperature Rating:** 90 °C.
- **Voltage:** 600V max.
- 9CU.

CONNECTORS



***EXPANDED WIRE RANGE** when installed with NSI N12ID dieless compression tool.
UL Listed with other tools:
FOR TOOL/DIE CRIMPING INFORMATION, PLEASE SEE TABLE ON PAGE 87

CAT. NO.	WIRE RANGE	EXPANDED WIRE RANGE*	COLOR CODE	I.D. (IN.)	O.D. (IN.)	LENGTH (L) (IN.)	STD. CTN. QTY.
SC-8	8 AWG	8 AWG	Red	0.173	0.272	0.902	100
SC-6	6 AWG	6 - 8 AWG	Blue	0.205	0.295	1.000	100
SC-4	4 AWG	4 - 6 AWG	Gray	0.252	0.343	1.000	100
SC-3	3 AWG	3 - 6 AWG	White	0.282	0.378	1.883	50
SC-2	2 AWG	2 - 6 AWG	Brown	0.315	0.421	1.252	50
SC-1	1 AWG	1 - 6 AWG	Green	0.358	0.469	1.799	50
SC-1/0	1/0 AWG	1/0 - 6 AWG	Pink	0.390	0.520	1.598	50
SC-2/0	2/0 AWG	2/0 - 4 AWG	Black	0.441	0.563	1.752	25
SC-3/0	3/0 AWG	3/0 - 2 AWG	Orange	0.492	0.622	1.752	25
SC-4/0	4/0 AWG	4/0 - 1 AWG	Purple	0.547	0.689	1.902	25
SC-250	250 MCM	250 MCM - 1/0 AWG	Yellow	0.594	0.752	2.000	25
SC-300	300 MCM	300 MCM - 2/0 AWG	White	0.657	0.815	2.098	12
SC-350	350 MCM	350 MCM - 3/0 AWG	Red	0.701	0.874	2.098	12
SC-400	400 MCM	400 MCM - 4/0 AWG	Blue	0.764	0.949	2.299	6
SC-500	500 MCM	500 - 250 MCM	Brown	0.835	1.063	2.500	6
SC-600	600 MCM	600 - 250 MCM	Green	0.925	1.189	2.500	6
SC-750	750 MCM	750-500 MCM	Black	1.031	1.311	3.201	3

CONNECTORS

Compression Connectors

Copper Splice Short Barrel

SC Series

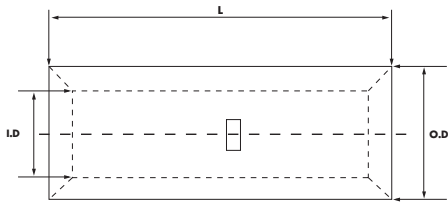


FEATURES

- Produced from high conductivity copper tubing.
- Serrations indicate proper crimp locations.
- Tin-plated to provide corrosion resistance.
- Marked with die index and color coded.
- Suitable for use at voltages up to 35KV provided connector is properly installed to cable manufacturer voltage stress relief instructions.
- 5KV is the maximum voltage in all bare splices.

SPECIFICATIONS

- UL486A Listed Wire Connector.
- UL467 Grounding & Bonding (Sizes 8 AWG - 3/0 AWG).
- cULus Listed 155027.
- Max ampacity is based on NEC 310.15, insulation type, and conductor material. Please consult your current NEC manual.
- * CLASS B OR C BUILDING WIRE CU CABLE ONLY
- **Temperature Rating:** 90 °C.
- **Voltage:** 600V max.
- 9CU.



***EXPANDED WIRE RANGE** when installed with NSI N12ID dieless compression tool.
 UL Listed with other tools:
FOR TOOL/DIE CRIMPING INFORMATION, PLEASE SEE TABLE ON PAGE 87

CAT. NO.	WIRE RANGE	EXPANDED WIRE RANGE*	COLOR CODE	I.D. (IN.)	O.D. (IN.)	LENGTH (L) (IN.)	STD. CTN. QTY.
SC-8	8 AWG	8 AWG	Red	0.173	0.272	0.902	100
SC-6	6 AWG	6 - 8 AWG	Blue	0.205	0.295	1.000	100
SC-4	4 AWG	4 - 6 AWG	Gray	0.252	0.343	1.000	100
SC-3	3 AWG	3 - 6 AWG	White	0.282	0.378	1.883	50
SC-2	2 AWG	2 - 6 AWG	Brown	0.315	0.421	1.252	50
SC-1	1 AWG	1 - 6 AWG	Green	0.358	0.469	1.799	50
SC-1/0	1/0 AWG	1/0 - 6 AWG	Pink	0.390	0.520	1.598	50
SC-2/0	2/0 AWG	2/0 - 4 AWG	Black	0.441	0.563	1.752	25
SC-3/0	3/0 AWG	3/0 - 2 AWG	Orange	0.492	0.622	1.752	25
SC-4/0	4/0 AWG	4/0 - 1 AWG	Purple	0.547	0.689	1.902	25
SC-250	250 MCM	250 MCM - 1/0 AWG	Yellow	0.594	0.752	2.000	25
SC-300	300 MCM	300 MCM - 2/0 AWG	White	0.657	0.815	2.098	12
SC-350	350 MCM	350 MCM - 3/0 AWG	Red	0.701	0.874	2.098	12
SC-400	400 MCM	400 MCM - 4/0 AWG	Blue	0.764	0.949	2.299	6
SC-500	500 MCM	500 - 250 MCM	Brown	0.835	1.063	2.500	6
SC-600	600 MCM	600 - 250 MCM	Green	0.925	1.189	2.500	6
SC-750	750 MCM	750-500 MCM	Black	1.031	1.311	3.201	3