

## DESCRIPTION

The Halo Surface LED Downlight (SLD) incorporates WaveStream™ technology to create an ultra-low profile surface mounting luminaire with the performance and look of a traditional downlight. SLD series is designed for installation in standard and fire-rated 3-1/2" and 4" square, octagon or round junction boxes. SLD series may also retrofit in 4", 5", or 6" IC and Non-IC recessed housings\*. Suitable for residential or commercial installations. Ideal for closets, storage areas, attics and basements. Compliant with NFPA® 70, NEC® Section 410.16 (A)(3) and 410.16 (C)(5).

Catalog #		Type
Project		
Comments		Date
Prepared by		

## SPECIFICATION FEATURES

SLD accessories are specially designed to offer additional finish options and expand the mounting capabilities of SLD series.

### Designer Trim Rings

SLD trims provide the ultimate in design freedom to match décor and interior fittings in a space with an offering of Satin Nickel and Tuscan Bronze plated trims, plus a White trim that may be field painted prior to installation to an alternate color choice.

#### SLD4 Designer Trims



**SLD4TRMSN**  
4" Satin Nickel



**SLD4TRMTBZ**  
4" Tuscan Bronze



**SLD4TRMWH**  
4" White (Paintable)

#### SLD6 Designer Trims



**SLD6TRMSN**  
6" Satin Nickel



**SLD6TRMTBZ**  
6" Tuscan Bronze



**SLD6TRMWH**  
6" White (Paintable)



The versatile SLD trims are optional accessories that snap over the SLD. Note that use of the pre-installed thin film tape on the back side of the trim is required to secure the trim and prevent rotation when installing the SLD unit.

### Spacer Extension Ring

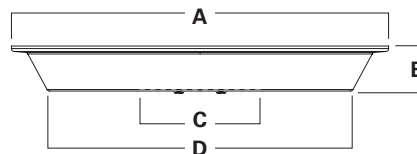
The spacer extension ring adds 15/16" depth when the SLD driver cannot fit into a junction box due to excess wire fill or other obstruction. The spacer extension ring is also a problem solver for installations with shallow pancake boxes or plaster rings.



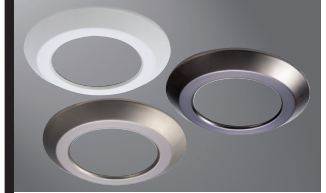
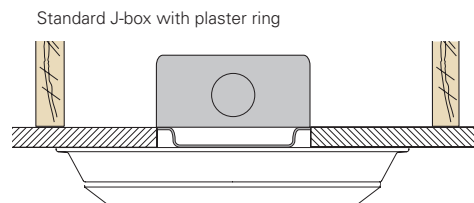
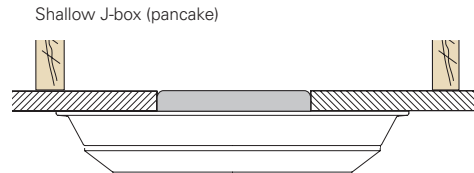
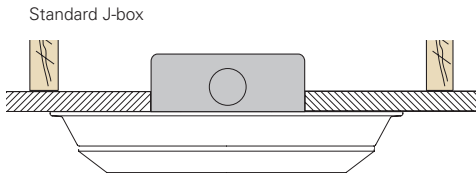
**SLD4EXT**  
4" Surface LED J-box Extender



**SLD6EXT**  
6" Surface LED J-box Extender



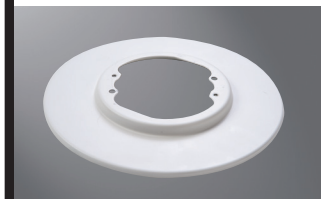
	A	B	C	D
SLD4EXT	7.75"	0.925"	3.88"	6.25"
SLD6EXT	9.5"	0.925"	3.88"	8"



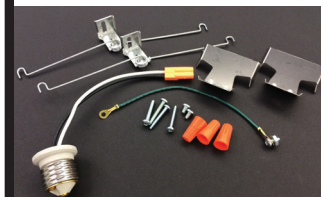
**SLD4 & SLD6  
Designer Trims**



**SLD4 & SLD6  
Spacer Extension  
Rings**



**SLD4 & SLD6  
Surface Box  
Adapters**



**Replacement Parts  
Kits**

**SLD Series  
Accessories**

**Surface Box Adapter**

The surface box adapter allows the user to install the SLD to a 4-inch round or octagon junction box that is mounted flat on a ceiling or beam surface (not recessed in the ceiling).

For installation of SLD6 in 4-inch square junction boxes use SLD6RAD with the SLD6SADPLT square adapter plate.



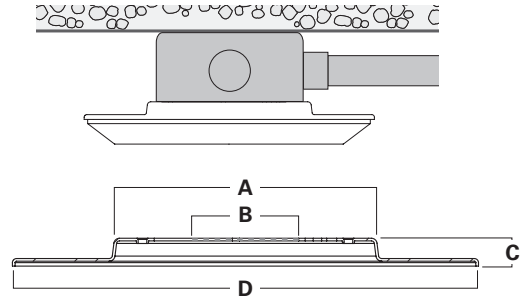
**SLD4RAD**  
4" SLD Round Surface J-box Adapter



**SLD6RAD**  
6" SLD Round Surface J-box Adapter (\*use SLD6SADPLT for square J-box)



**\*SLD6SADPLT**  
6" SLD Square Surface J-box Adapter Plate (use with SLD6RAD)

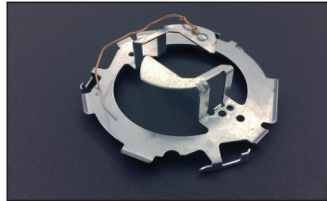


	A	B	C	D
SLD4RAD	4.47"	3.30"	.46"	6.15"
SLD6RAD	4.47"	3.75"	.48"	7.92"

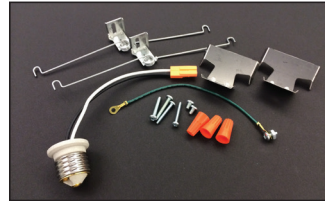
**Replacement Parts Kits**



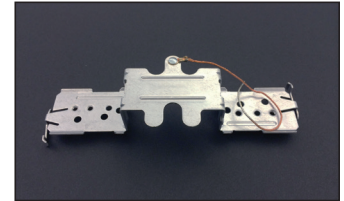
**SLD4ACCKIT**  
SLD4 Retrofit Kit  
SLD4 screwbase adapter, friction blades, ground wire, mounting screws, wire nuts



**SLD4BRKT**  
SLD4 Junction Box Mounting Bracket and screws



**SLD6ACCKIT**  
SLD6 Retrofit Kit  
SLD6 screwbase adapter, friction blades, torsion springs, ground wire, mounting screws, wire nuts



**SLD6BRKT**  
SLD6 Junction Box Mounting Bracket and screws

Junction Box	Junction Box Type/Dimensions	SLD4 4-Inch	SLD6 6-Inch	SLD4RAD Surface Box Adapter (order SLD4 separately)	SLD6RAD Surface Box Adapter (order SLD6 separately)
	Octagon – Steel Light Fixture / Fan Box 4" x 4" x 2-1/8" 4" x 4" x 1-1/2"	YES	YES	YES	YES (1-1/2" deep box - best with low profile conduit connector)
	Square – Steel Deep Box 4" x 4" x 2-1/8" 4" x 4" x 1-1/2"	N/A Box corners larger than SLD4	YES	NO	YES w/ Adapter Plate Included in SLD6RAD Kit
	Round – New Work Fixture Box (plastic) 4" diameter x 2-3/16"	YES	YES	YES	YES (4" DIA)
	3-1/2" diameter x 2-3/4"				NO (3-1/2" DIA)
	Round – Old Work Fixture Box (plastic) 4-1/4" diameter flange (3-1/2" I.D.) x 2-5/8"	YES	YES	YES	NO
	Round – New Work Fixture Box (plastic) w/ Bar Hanger 4" diameter x 2-3/16"	YES	YES	YES	YES
	Round surface mount 4" diameter x 1-1/2"	YES with SLD4RAD	YES with SLD6RAD	YES	YES

## DESCRIPTION

The Halo Surface LED Downlight (SLD) incorporates WaveStream™ technology to create an ultra-low profile surface mounting luminaire with the performance and look of a traditional downlight. SLD series is designed for installation in standard and fire-rated 3-1/2" and 4" square, octagon or round junction boxes. SLD series may also retrofit in 4", 5", or 6" IC and Non-IC recessed housings\*. Suitable for residential or commercial installations. Ideal for closets, storage areas, attics and basements. Compliant with NFPA® 70, NEC® Section 410.16 (A)(3) and 410.16 (C)(5).

Catalog #		Type
Project		
Comments		Date
Prepared by		

## SPECIFICATION FEATURES

SLD accessories are specially designed to offer additional finish options and expand the mounting capabilities of SLD series.

### Designer Trim Rings

SLD trims provide the ultimate in design freedom to match décor and interior fittings in a space with an offering of Satin Nickel and Tuscan Bronze plated trims, plus a White trim that may be field painted prior to installation to an alternate color choice.

#### SLD4 Designer Trims



**SLD4TRMSN**  
4" Satin Nickel

**SLD4TRMTBZ**  
4" Tuscan Bronze

**SLD4TRMWH**  
4" White (Paintable)

#### SLD6 Designer Trims



**SLD6TRMSN**  
6" Satin Nickel

**SLD6TRMTBZ**  
6" Tuscan Bronze

**SLD6TRMWH**  
6" White (Paintable)



The versatile SLD trims are optional accessories that snap over the SLD. Note that use of the pre-installed thin film tape on the back side of the trim is required to secure the trim and prevent rotation when installing the SLD unit.

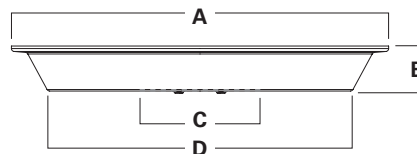
### Spacer Extension Ring

The spacer extension ring adds 15/16" depth when the SLD driver cannot fit into a junction box due to excess wire fill or other obstruction. The spacer extension ring is also a problem solver for installations with shallow pancake boxes or plaster rings.

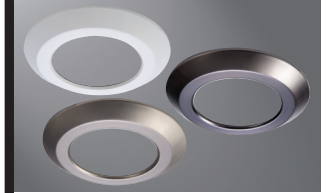
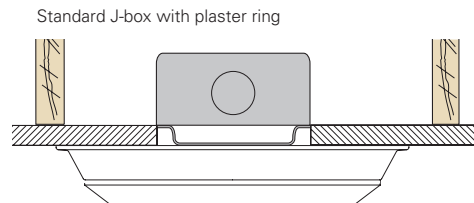
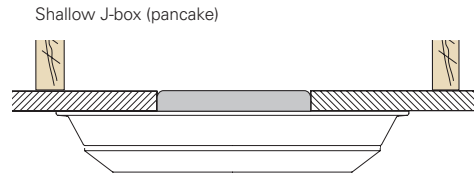
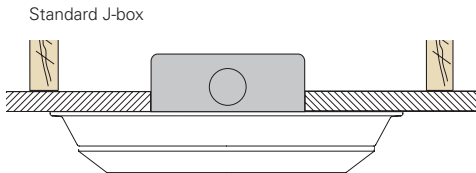


**SLD4EXT**  
4" Surface LED J-box Extender

**SLD6EXT**  
6" Surface LED J-box Extender



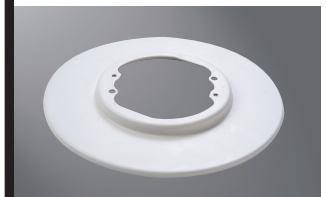
	A	B	C	D
SLD4EXT	7.75"	0.925"	3.88"	6.25"
SLD6EXT	9.5"	0.925"	3.88"	8"



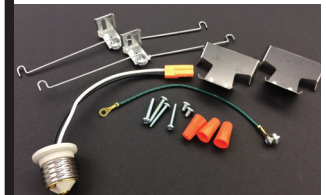
**SLD4 & SLD6  
Designer Trims**



**SLD4 & SLD6  
Spacer Extension  
Rings**



**SLD4 & SLD6  
Surface Box  
Adapters**



**Replacement Parts  
Kits**

**SLD Series  
Accessories**

**Surface Box Adapter**

The surface box adapter allows the user to install the SLD to a 4-inch round or octagon junction box that is mounted flat on a ceiling or beam surface (not recessed in the ceiling).

For installation of SLD6 in 4-inch square junction boxes use SLD6RAD with the SLD6SADPLT square adapter plate.



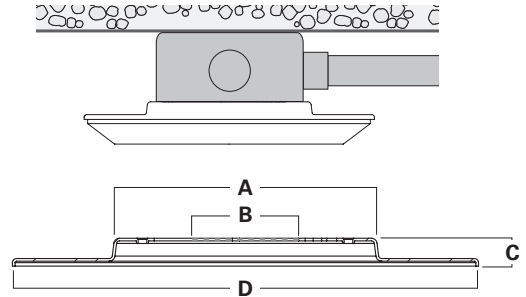
**SLD4RAD**  
4" SLD Round Surface J-box Adapter



**SLD6RAD**  
6" SLD Round Surface J-box Adapter (\*use SLD6SADPLT for square J-box)



**\*SLD6SADPLT**  
6" SLD Square Surface J-box Adapter Plate (use with SLD6RAD)

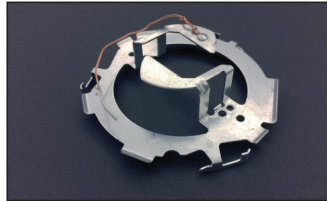


	A	B	C	D
SLD4RAD	4.47"	3.30"	.46"	6.15"
SLD6RAD	4.47"	3.75"	.48"	7.92"

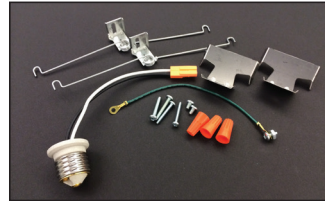
**Replacement Parts Kits**



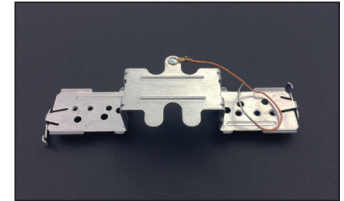
**SLD4ACCKIT**  
SLD4 Retrofit Kit  
SLD4 screwbase adapter, friction blades, ground wire, mounting screws, wire nuts



**SLD4BRKT**  
SLD4 Junction Box Mounting Bracket and screws



**SLD6ACCKIT**  
SLD6 Retrofit Kit  
SLD6 screwbase adapter, friction blades, torsion springs, ground wire, mounting screws, wire nuts



**SLD6BRKT**  
SLD6 Junction Box Mounting Bracket and screws

Junction Box	Junction Box Type/Dimensions	SLD4 4-Inch	SLD6 6-Inch	SLD4RAD Surface Box Adapter (order SLD4 separately)	SLD6RAD Surface Box Adapter (order SLD6 separately)
	Octagon – Steel Light Fixture / Fan Box 4" x 4" x 2-1/8" 4" x 4" x 1-1/2"	YES	YES	YES	YES (1-1/2" deep box - best with low profile conduit connector)
	Square – Steel Deep Box 4" x 4" x 2-1/8" 4" x 4" x 1-1/2"	N/A Box corners larger than SLD4	YES	NO	YES w/ Adapter Plate Included in SLD6RAD Kit
	Round – New Work Fixture Box (plastic) 4" diameter x 2-3/16"	YES	YES	YES	YES (4" DIA)
	3-1/2" diameter x 2-3/4"				NO (3-1/2" DIA)
	Round – Old Work Fixture Box (plastic) 4-1/4" diameter flange (3-1/2" I.D.) x 2-5/8"	YES	YES	YES	NO
	Round – New Work Fixture Box (plastic) w/ Bar Hanger 4" diameter x 2-3/16"	YES	YES	YES	YES
	Round surface mount 4" diameter x 1-1/2"	YES with SLD4RAD	YES with SLD6RAD	YES	YES